

38° 15' 00"

Latitude

81° 45' 00"

Longitude

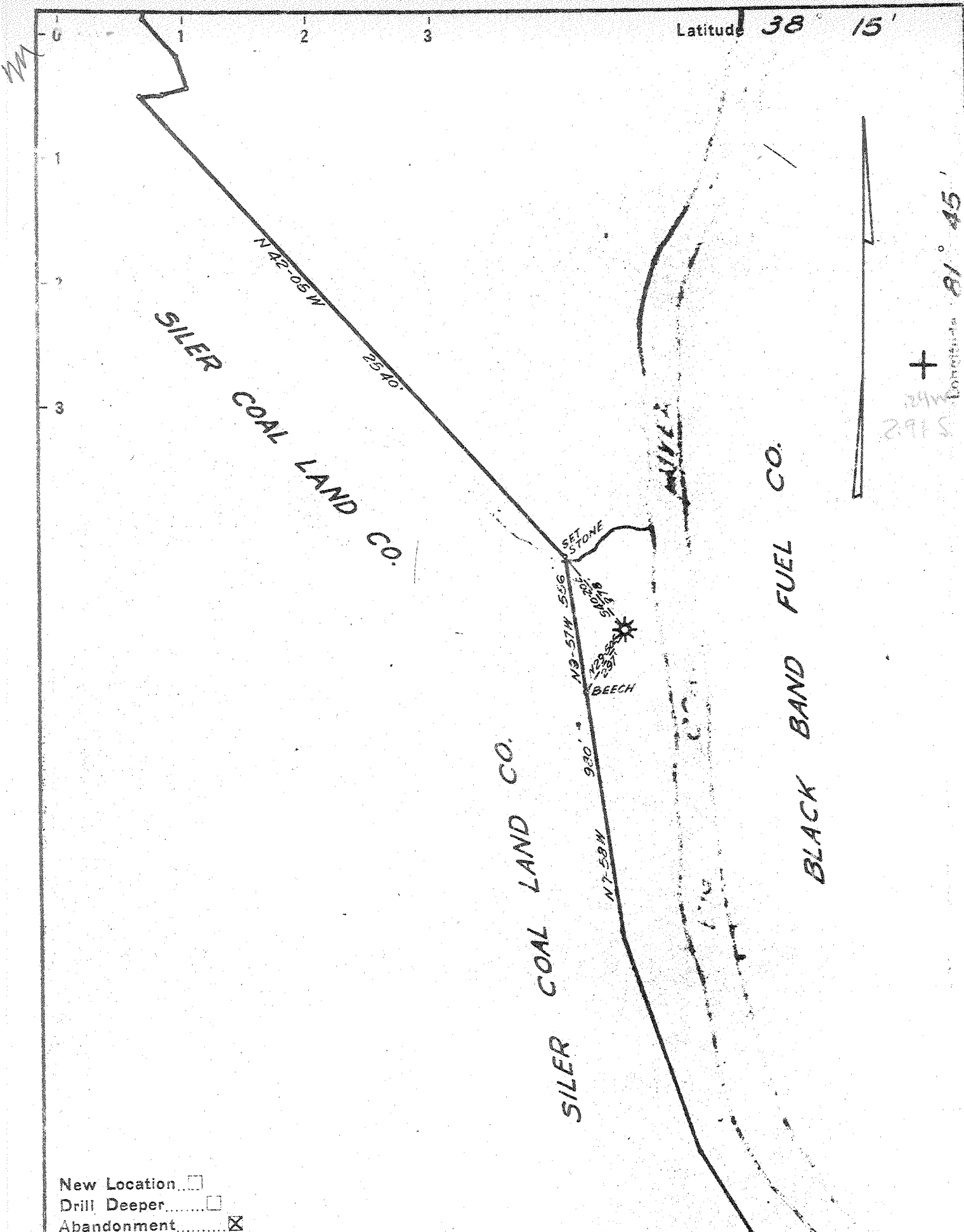
Topo Location

7.5' Loc. 2.835 15' Loc. 2.835  
0.34W (calc.) 0.34W

Company Cambridge Gas Co.  
Farm M.B. Billings Heirs  
15' Quad Madison (NE)  
(sec.)  
7.5' Quad Julian  
District Peytona

WELL LOCATION PLAT

County 005 Permit 30112



New Location   
 Drill Deeper   
 Abandonment

Company CAMBRIDGE GAS CO.  
 Address CHARLESTON, W. VA  
 Farm M.B. GILLISPIE HEIRS  
 Tract \_\_\_\_\_ Acres 132 Lease No. \_\_\_\_\_  
 Well (Farm) No. 1 Serial No. \_\_\_\_\_  
 Elevation (Spirit Level) 658  
 Quadrangle MADISON, N.E.  
 County BOONE District PEYTONA  
 Engineer H. B. Burnett  
 Engineer's Registration No. 710  
 File No. \_\_\_\_\_ Drawing No. \_\_\_\_\_  
 Date JULY 1, 1945 Scale 1" = 500'

STATE OF WEST VIRGINIA  
 DEPARTMENT OF MINES  
 OIL AND GAS DIVISION  
 CHARLESTON

WELL LOCATION MAP  
 FILE NO. 300-112-B

+ Denotes location of well on United States Topographic Maps, scale 1 to 62,500, latitude and longitude lines being represented by border lines as shown.

- Denotes one inch spaces on border line of original tracing