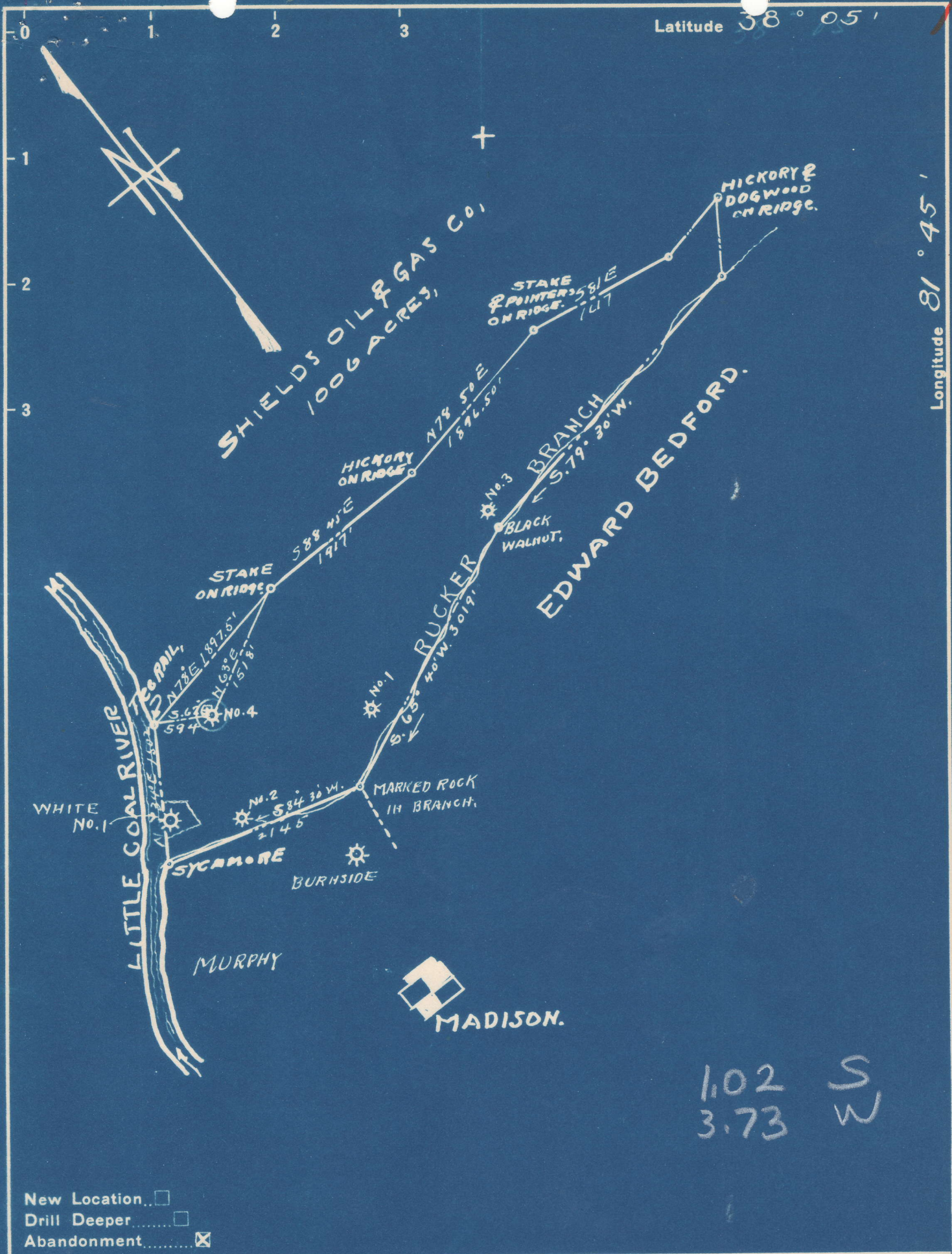


Latitude 38° 05'

Longitude 81° 45'



1.02 S
3.73 W

- New Location
- Drill Deeper
- Abandonment

Company LIMA GAS CO.
 Address 918 BIGLEY AVE. Charleston, W.VA.
 Farm MADISON DEVLMT. CO.
 Tract _____ Acres 250 Lease No. _____
 Well (Farm) No. 4 Serial No. _____
 Elevation (Spirit Level) 814.03
 Quadrangle MADISON
 County BOONE District SCOTT
 Engineer John D. Moore
 Engineer Registration No. 159
 File No. _____ Drawing No. _____
 Date OCT. 10, 1949 Scale 1" = 1320'

STATE OF WEST VIRGINIA
 DEPARTMENT OF MINES
 OIL AND GAS DIVISION
 CHARLESTON

WELL LOCATION MAP
 FILE NO. B00-183-A

+ Denotes location of well on United States Topographic Maps, scale 1 to 62,500, latitude and longitude lines being represented by border lines as shown.
 - Denotes one inch spaces on border line of original tracing.

MADISON DEVELOPMENT CO. NO. 4 WELL.

Scott District, Boone County, W. Va.

By Lima Gas Co., Charleston, W. Va.

Abandoned under permit Boo-183-A.

On 250 acres.

Elevation, 814.03' L.

Surface and minerals owned by Madison Development Co., Madison, W. Va.

Drilling completed in 1924.

10" casing, 34'; 8½", 326' (pulled); 6⅝", 1132'; 2" tubing, 1849'.

Gas well. Record to Dept. of Mines stamped Nov. 22, 1949.

Record to RCT from Mrs. Griffith Jan. 20, 1950. Old File No. 600.

	Top.	Bottom.
Gravel	0	30
Black shale	30	50
Sand	50	70
Slate	70	120
Sand	120	140
Slate	140	160
Sand	160	450
Slate and shells	450	475
Sand	475	520
Slate	520	550
Sand	550	575
Lime	575	590
Salt Sand	590	760
Slate	760	790
Lime	790	920
Sand	920	950
Red rock	950	960
Slate and shells	960	1020
Sand	1020	1030
Slate and shells	1030	1080
Little Lime	1080	1120
Pencil Cave	1120	1122
Big Lime	1122	1324
Big Injun Sand	1324	1370
Slate	1370	1765
Lime shell	1765	1785
Slate	1785	1800
Brown shale	1800	1820
Berea Sand	1820	1844
Slate	1844	1849
Total depth		1849

WEST VIRGINIA DEPARTMENT OF MINES
OIL AND GAS DIVISION

(L19)
600

WELL RECORD

Permit No. 183-A

Oil or Gas Well (Kind)

Company Lima Gas Co.
 Address Charleston, W. Va.
 Farm Madison Develop Co. Acres 750
 Location (waters).....
 Well No. Elev. 814.03
 District Putnam County Bowling
 The surface of tract is owned in fee by.....
 Address.....
 Mineral rights are owned by Madison Develop Co
Madison W Va Address.....
 Drilling commenced.....
 Drilling completed 1924
 Date shot..... Depth of shot.....
 Open Flow /10ths Water in..... Inch
 /10ths Merc. in..... Inch
 Volume..... Cu. Ft.
 Rock Pressure..... lbs..... hrs.
 Oil..... bbls., 1st 24 hrs.
 Fresh water..... feet..... feet
 Salt water..... feet..... feet

Casing and Tubing	Used in Drilling	Left in Well	Packers
Size			Kind of Packer.....
16.....			
13.....			
10.....	348	341	Size of.....
8 1/4.....	326		
6 5/8..... <u>700</u>	1132	1132	Depth set.....
5 3/16.....			
3.....			Perf. top.....
2 <u>Shot 1659</u>	1849	1849	Perf. bottom.....
Liners Used.....			Perf. top.....
			Perf. bottom.....

CASING CEMENTED..... SIZE..... No. FT..... Date.....
 COAL WAS ENCOUNTERED AT..... FEET..... INCHES
 FEET..... INCHES..... FEET..... INCHES
 FEET..... INCHES..... FEET..... INCHES

Formation	Color	Hard or Soft	Top	Bottom	Oil Gas or Water	Depth Found	Remarks
Gravel			0	30			
Black Shale			30	50			
Sand			50	70			
Slate			70	120			
Sand			120	140			
Slate			140	160			
Sand			160	450			
Slate & Shells			450	475			
Sand			475	520			
Slate			520	550			
Sand			550	575			
Lime			575	590			
Salt Sand			590	760			
Slate			760	790			
Lime			790	920			
Sand			920	950			
Red Rock			950	960			
Slate & Shells			960	1020			
Sand			1020	1030			
Slate & Shells			1030	1080			
Little Lime			1080	1120			
Pencil Cave			1120	1122			
Big Lime			1122	1324			
Big Injun			1324	1370			
Slate			1370	1765			
Lime Shell			1765	1785			
Slate			1785	1800			
Brown Shale			1800	1820			
Berea Sand			1820	1844			
Slate			1844	1849			
Total Depth				1849			

