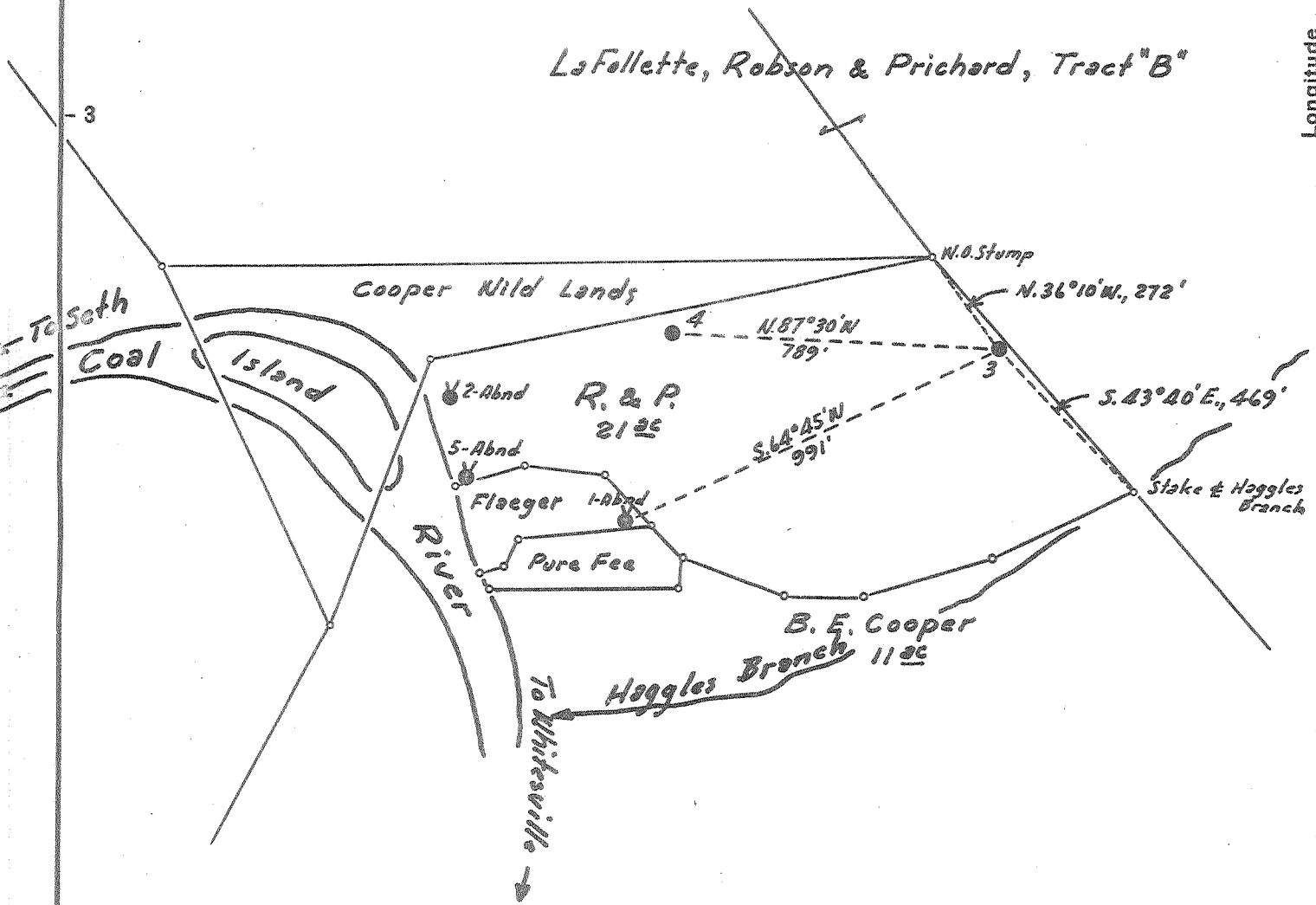


Latitude 38° 05'

Longitude 81° 35'

LaFollette, Robson & Prichard, Tract "B"



New Location   
 Drill Deeper   
 Abandonment

SEP 27 1955

*0.3 W*  
*0.2 W*

Company	Pure Oil Co.
Address	Newark, Ohio
Farm	Robson & Prichard
Tract	Acres 21 Lease No. 269
Well (Farm) No.	3 Serial No. 444
Elevation (Spirit Level)	997.8
Quadrangle	Peytona
County	Boone District Sherman
Engineer	J. B. Hunter
Engineer's Registration No.	Ohio - 2912
File No.	Drawing No.
Date	11-8-54 Scale 1" = 400'

STATE OF WEST VIRGINIA  
 DEPARTMENT OF MINES  
 AND GAS DIVISION  
 CHARLESTON

WELL LOCATION MAP

FILE NO. B00-241-A

+ Denotes location of well on United States Topographic Maps, scale 1 to 62,500, latitude and longitude lines being represented by border lines as shown.

- Denotes one inch spaces on border line of original tracing.