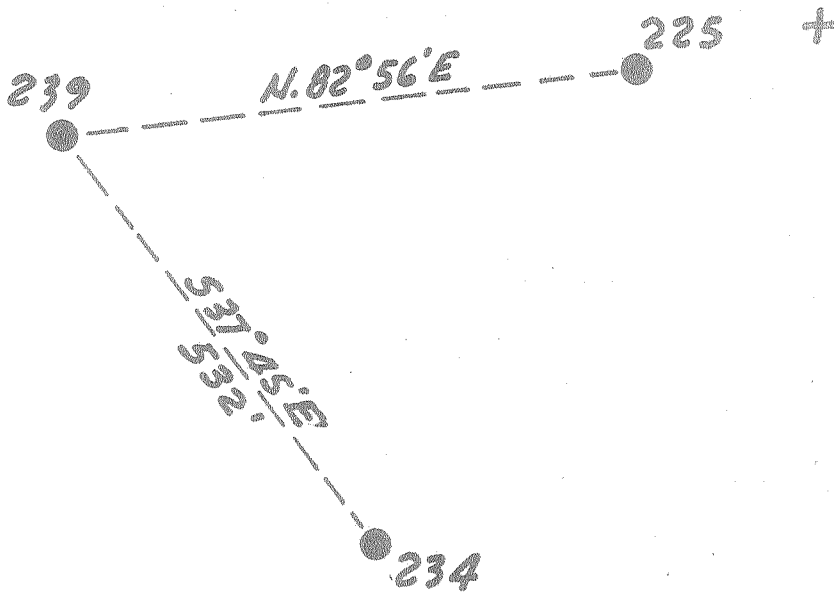


Latitude 38° 10'

Longitude 81° 30'



Williams Coal Co.  
12000 ±

New Location   
 Drill Deeper   
 Abandonment

Company	Pure Oil Co.		
Address	Newark, Ohio		
Farm	Williams Coal Co.		
Tract	Acres	Lease No.	5012
Well (Farm) No.	239	Serial No.	476
Elevation (Spirit Level)	1501.2		
Quadrangle	Peytona		
County	Boone	District	Sherman
Engineer	J. B. Hunter		
Engineer's Registration No.	Ohio-2912		
File No.	Drawing No.		
Date	9-21-55	Scale	1" = 200'

STATE OF WEST VIRGINIA  
 DEPARTMENT OF MINES  
 OIL AND GAS DIVISION  
 CHARLESTON

WELL LOCATION MAP  
 FILE NO. 1300-254-A

+ Denotes location of well on United States Topographic Maps, scale 1 to 62,500, latitude and longitude lines being represented by border lines as shown.

- Denotes one inch spaces on border line of original tracing.



694

STATE OF WEST VIRGINIA  
DEPARTMENT OF MINES  
OIL AND GAS DIVISION

Quadrangle Raytona  
Permit No. 254-A

WELL RECORD

Oil or Gas Well Water Inj.  
(KIND)

Company The Pure Oil Company  
Address Box 551 - Newark, Ohio  
Farm Williams Coal Company Acres 12,000  
Location (waters) \_\_\_\_\_  
Well No. 239 Elev. 1501.2  
District Sherman County Boone  
The surface of tract is owned in fee by Shonk Land Co.  
802 Kan. Bkg & Trust Co. Bldg. Address Charleston, W. Va.  
Mineral rights are owned by Ditto  
Address \_\_\_\_\_

Drilling commenced 9-15-28  
Drilling completed 11-30-28  
Date Shot 12-1-28 From 3192' To 3214'  
With 80 qts.

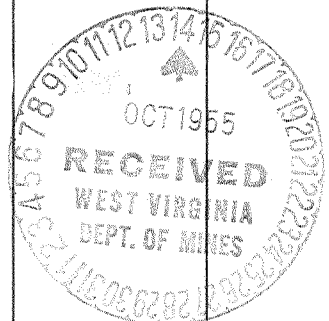
Open Flow /10ths Water in \_\_\_\_\_ Inch  
/10ths Merc. in \_\_\_\_\_ Inch  
Volume \_\_\_\_\_ Cu. Ft.  
Rock Pressure \_\_\_\_\_ lbs. \_\_\_\_\_ hrs.  
Oil 9.1 bbls., 1st 24 hrs.  
Fresh water 319 feet 800 feet  
Salt water 1715 feet \_\_\_\_\_ feet

Casing and Tubing	Used in Drilling	Left in Well	Packers
Size			Kind of Packer
16			
13 1/2	22'	22'	
10	1004'	1004'	Size of
8 1/2	1860'	1860'	
6 1/2	2525'	2525'	Depth set
5 3/16			
3			Perf. top
2	Cemented with 50 sks cement.	3178'	Perf. bottom
Liners Used			Perf. top
			Perf. bottom

CASING CEMENTED \_\_\_\_\_ SIZE \_\_\_\_\_ No. Ft. \_\_\_\_\_ Date \_\_\_\_\_

COAL WAS ENCOUNTERED AT 125 FEET 60 INCHES  
165 FEET 60 INCHES  
286 FEET 96 INCHES 315 FEET 48 INCHES  
379 FEET 48 INCHES 995 FEET 60 INCHES

Formation	Color	Hard or Soft	Top	Bottom	Oil, Gas or Water	Depth Found	Remarks
Gravel			0	21			
Sand			21	115			
Slate			115	125			
Coal			125	130			
Slate			130	165			
Coal			165	170			
Slate			170	200			
Sand			200	245			
Slate			245	286			
Coal			286	294			
Slate			294	315			
Coal			315	319	Water	319'	3 BPH
Sand			319	379			
Coal			379	383			
Lime			383	500			
Slate & shells			500	623			
Sand			623	655			
Slate & shells			655	859	Water	800'	8 BPH
Sand			859	952			
Slate & shells			952	995			
Coal			995	1000			
Lime shells			1000	1020			
Sand			1020	1100			
Slate			1100	1172			
Lime			1172	1211			
Sand			1211	1242			
Slate			1242	1334			
Sand			1334	1415			
Grampus			1415	1541			
Slate and shells			1541	1570			
Sand			1570	1592			
Slate and shells			1592	1675			
Salt sand			1675	1854	Water	1715'	H.F.
Black lime			1854	2027			
Red rock			2027	2067			
Slate			2067	2095			
Sand			2095	2138			
Red rock			2138	2153			
Slate			2153	2189			



MAR 20 1957

Formation	Color	Hard or Soft	Top	Bottom	Oil, Gas or Water	Depth Found	Remarks
Maxon sand			2189	2263			
Red rock			2263	2283			
Lime			2283	2327			
Red rock			2327	2357			
Lime			2357	2382			
Pencil cave			2382	2402			
Little lime			2402	2485			
Slate			2485	2495			
Lime			2495	2503			
Slate			2503	2513			
Big lime			2513	2736			
Big injun			2736	2761			
Lime shells			2761	2850			
Slate			2850	2936			
Weir sand			2936	3029	Gas	2954'	
Slate and shells			3029	3159			
Brown shale			3159	3174			
Berea sand			3174	3214	Oil & Gas	3189 - 3214	
Slate			3214	3216			
TOTAL DEPTH				3216			

Date September 1, 1955

APPROVED THE PURE OIL COMPANY, Owner

By Guy J. Andersen  
(Title)

Division Superintendent