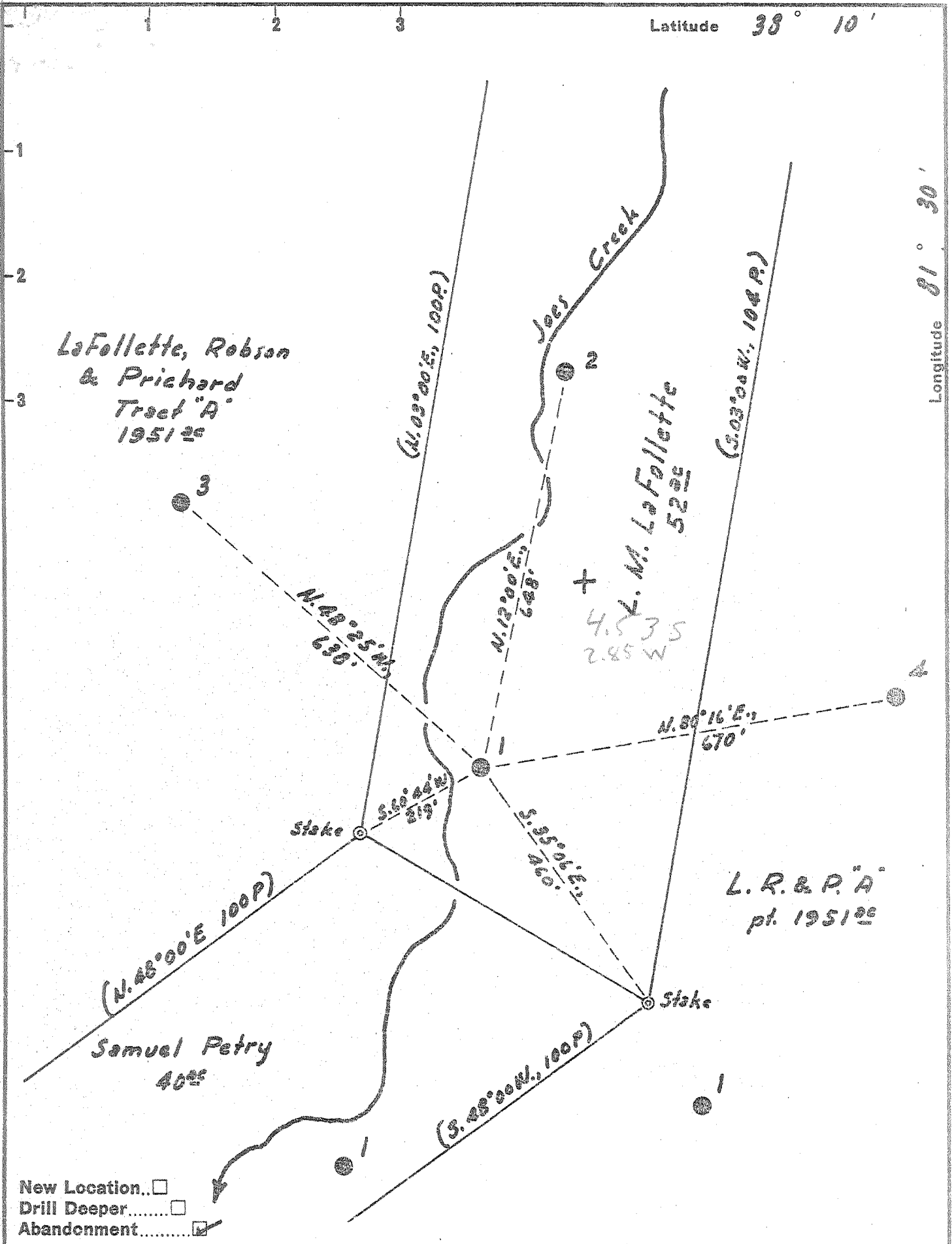


Latitude 38° 10'

Longitude 81° 30'



New Location...
 Drill Deeper...
 Abandonment...

Company Pure Oil Co.
 Address Newark, Ohio
 Farm L. M. LaFollette
 Tract — Acres 52 Lease No. 248
 Well (Farm) No. 1 Serial No. 516
 Elevation (Spirit Level) 995'
 Quadrangle Peytona
 County Boone District Sherman
 Engineer J. B. Hunter
 Engineer's Registration No. Ohio - 2912
 File No. _____ Drawing No. _____
 Date 5/2/57 Scale 1" = 200'

STATE OF WEST VIRGINIA
 DEPARTMENT OF MINES
 OIL AND GAS DIVISION
 CHARLESTON

WELL LOCATION MAP
 FILE NO. B00-303-A

+ Denotes location of well on United States Topographic Maps, scale 1 to 62,500, latitude and longitude lines being represented by border lines as shown.

- Denotes one inch spaces on border line of original tracing.

1951



708

STATE OF WEST VIRGINIA DEPARTMENT OF MINES OIL AND GAS DIVISION

Quadrangle Payton Permit No. 203-A

WELL RECORD

Oil or Gas Well Oil (KIND)

Company The Pure Oil Company Address P. O. Box 551 Newark, Ohio Farm L. M. LaFollette, Acres 52 Location (waters) Joos Creek Well No. 1 Elev. 995' District Sherman County Boone The surface of tract is owned in fee by L. M. LaFollette, Robert B. LaFollette & James A. LaFollette Address Mineral rights are owned by Same Address

Table with columns: Casing and Tubing, Used in Drilling, Left in Well, Packers. Rows include sizes 16, 12 1/2, 10, 8 1/2, 6 1/2, 5 3/16, 3, 2 and packer details like Kind of Packer, Size of, Depth set, Perf. top/bottom.

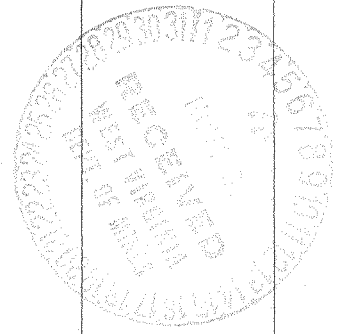
Drilling commenced 9-25-18 Drilling completed 4-2-19 Date Shot 4-8-19 From 2655' To 2683' With 80 qts. Open Flow /10ths Water in Inch /10ths Merc. in Inch Volume Cu. Ft. Rock Pressure lbs. hrs. Oil 302 bbls., 1st 24 hrs. WELL ACIDIZED WELL FRACTURED

CASING CEMENTED SIZE No. Ft. Date

COAL WAS ENCOUNTERED AT 125 FEET 36 INCHES 450 FEET 48 INCHES 637 FEET 36 INCHES 1002 FEET 24 INCHES FEET INCHES

RESULT AFTER TREATMENT ROCK PRESSURE AFTER TREATMENT Fresh Water 65' Feet Salt Water 1230' Feet 1672'

Main log table with columns: Formation, Color, Hard or Soft, Top, Bottom, Oil, Gas or Water, Depth, Remarks. Includes entries for Gravel, Slate, Sand, Coal, Lime, and Salt sand.



(over)

DEC 20 1958

Formation	Color	Hard or Soft	Top	Bottom	Oil, Gas or Water	Depth Found	Remarks
Slate	black		1360	1438			
Sand	white		1438	1470			
Slate	black		1470	1548			
Sand	white		1548	1590			
Slate	black		1590	1622			
Maxon sand			1622	1727			
Slate	black		1727	1730			
Lime	red		1730	1760			
Slate	white		1760	1795			
Slate	red		1795	1813			
Sand	white		1813	1820			
Slate	black		1820	1870			
Little lime	black		1870	1910			
Slate	black		1910	1947			
Big lime	white		1947	2174			
Sand	yellow		2174	2187			
Big Injun	red		2187	2215			
Slate	black		2215	2396			
Weir sand	white		2396	2478	gas	2397'	Show
Slate	black		2478	2635			
Berea sand	white		2635	2683	oil	2649-83	
Lime	black		2683	2685	gas	2647-49	
TOTAL DEPTH				2685			

Casinghead has been lowered 2' & all measurements should be made accordingly.

Date March 12, 1957, 19

APPROVED THE PURE OIL COMPANY, Owner

By Guy J. Andersen
(Title)
Division Superintendent