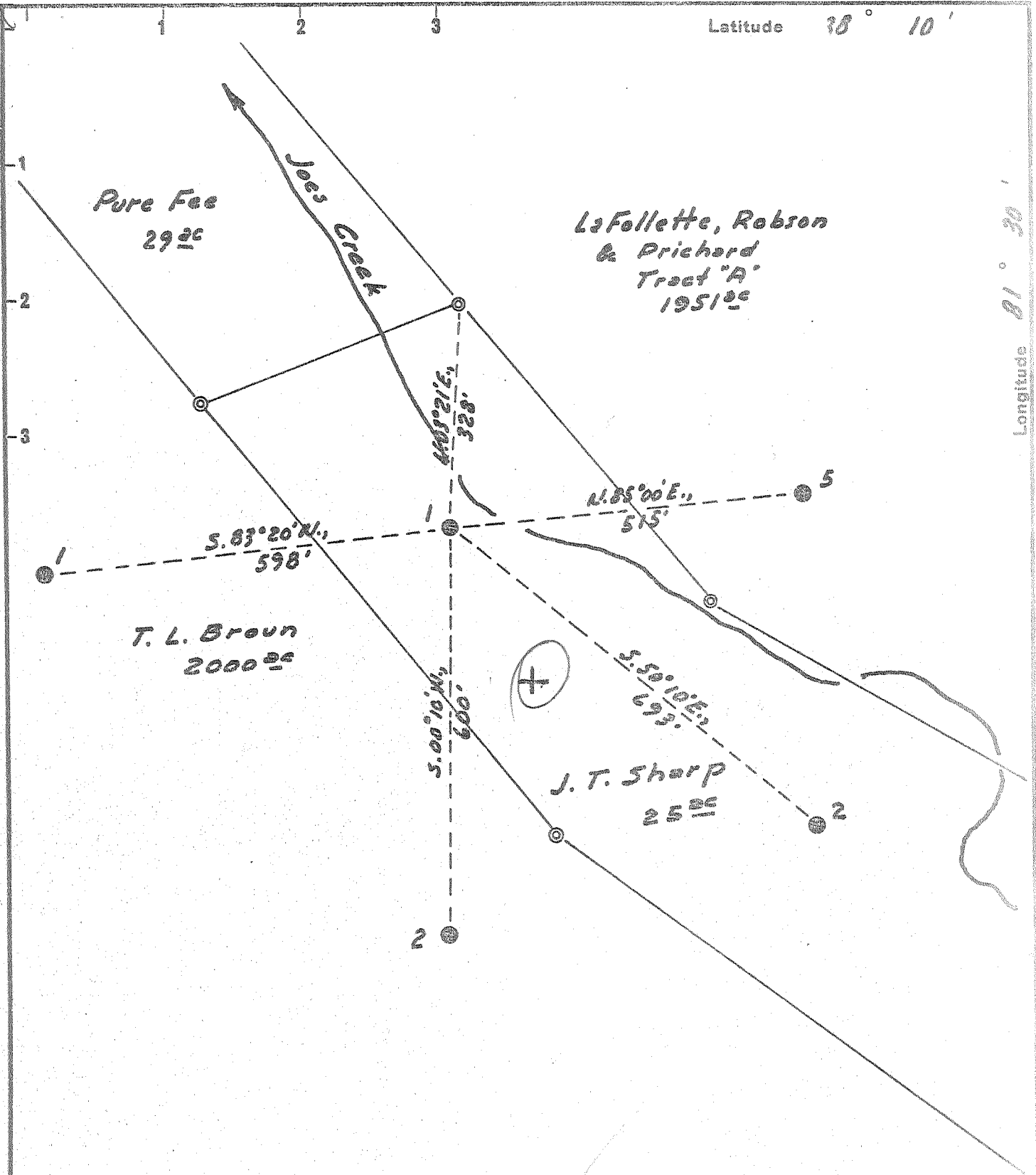


Latitude 38° 10'

Longitude 81° 30'



Pure Fee
29^{ac}

LaFollette, Robson
& Prichard
Tract "A"
1951^{ac}

T. L. Brown
2000^{ac}

J. T. Sharp
25^{ac}

New Location...
 Drill Deeper.....
 Abandonment.....

NOV 25 1957

3.67 W
 4.95 Q

Company	Pure Oil Co.
Address	Newark, Ohio
Farm	J. T. Sharp
Tract	— Acres 25 Lease No. 249
Well (Farm) No.	1 Serial No. 521
Elevation (Spirit Level)	895 <u>40</u>
Quadrangle	Paytona
County	Boone District Sherman
Engineer	J. B. Hunter
Engineer's Registration No.	Ohio-2912
File No.	— Drawing No. —
Date	3/4/57 Scale 1" = 200'

STATE OF WEST VIRGINIA
 DEPARTMENT OF MINES
 OIL AND GAS DIVISION
 CHARLESTON

WELL LOCATION MAP
 FILE NO. B00-308-B

+ Denotes location of well on United States Topographic Maps, scale 1 to 62,500, latitude and longitude lines being represented by border lines as shown.
 — Denotes one inch spaces on border line of original tracing.

J. T. SHARP No. 1 — PURE OIL CO. — B00-308-A