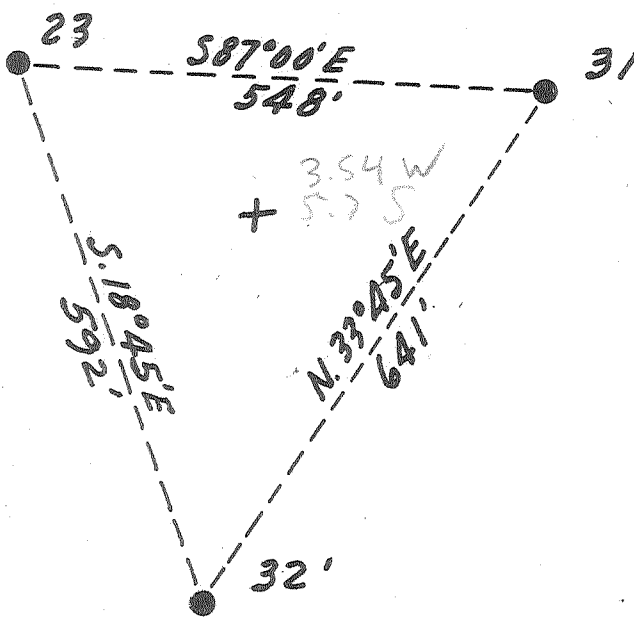


Latitude 38° 10'

Longitude 81° 30'

LaFollette, Robson & Drichard, Tract "B"
5000 ±^{ac}



New Location..
 Drill Deeper.....
 Abandonment.....

Company Pure Oil Co.
 Address Box 311, Olney, Illinois
 Farm L. R. & P.
 Tract B Acres 5000 Lease No. 224
 Well (Farm) No. 31 Serial No. 545
 Elevation (Spirit Level) 1603.3
 Quadrangle Peytona
 County Boone District Sherman
 Engineer J. B. Hunter
 Engineer's Registration No. Ohio-2912
 File No. _____ Drawing No. _____
 Date 4/14/60 Scale 1" = 200'

STATE OF WEST VIRGINIA
 DEPARTMENT OF MINES
 OIL AND GAS DIVISION
 CHARLESTON

WELL LOCATION MAP
 FILE NO. 500-381-A

+ Denotes location of well on United States Topographic Maps, scale 1 to 62,500, latitude and longitude lines being represented by border lines as shown.

- Denotes one inch spaces on border line of original tracing.



768

STATE OF WEST VIRGINIA
DEPARTMENT OF MINES
OIL AND GAS DIVISION

Quadrangle Reyton

Permit No. 1300-381-A

WELL RECORD

Oil or Gas Well (KIND)

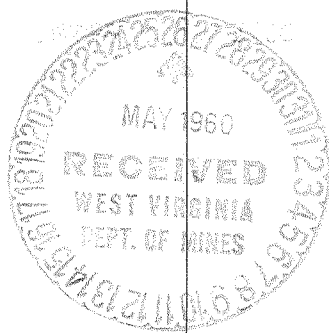
Company The Pure Oil Company
 Address R. 1 - Reed City, Michigan
 Farm L. R. & P. "B" Acres 5,000
 Location (waters) Joe Creek
 Well No. 31 Elev. 1603.3
 District Sherman County Boone
 The surface of tract is owned in fee by LaFollette, Robson & Prichard Address Charleston, W. Va.
 Mineral rights are owned by LaFollette, Robson & Prichard Address Charleston, W. Va.
 Drilling commenced 2-26-29
 Drilling completed 5-16-29
 Date Shot 5-16-29 From 3315 To 3338
 With 90 Qts.
 Open Flow /10ths Water in _____ Inch
 /10ths Merc. in _____ Inch
 Volume _____ Cu. Ft.
 Rock Pressure _____ lbs. _____ hrs.
 Oil 1.6 bbls., 1st 24 hrs.
 WELL ACIDIZED _____
 WELL FRACTURED _____

Casing and Tubing	Used in Drilling	Left in Well	Packers
Size			Kind of Packer
16			
13			
10	1125	1125	1600 Size of
8 3/4	2075	2075	2050
6 5/8	2632	2632	Depth set
5 3/16		2140	
3			Perf. top
2	3301	3301	Perf. bottom
Liners Used		2700	Perf. top
			Perf. bottom

CASING CEMENTED 2" SIZE 3301 No. Ft. 6-9-52 Date
 Cemented 30 bags Halliburton
 COAL WAS ENCOUNTERED AT 128 FEET 48 INCHES
 470 FEET 24 INCHES 506 FEET 36 INCHES
 750 FEET 48 INCHES 885 FEET 24 INCHES
 1082 FEET 48 INCHES 1102 FEET 24 INCHES

RESULT AFTER TREATMENT _____
 ROCK PRESSURE AFTER TREATMENT _____
 Fresh Water 128-132, 200, 2315 Feet 2430 Salt Water _____ Feet

Formation	Color	Hard or Soft	Top	Bottom	Oil, Gas or Water	Depth	Remarks
Surface			0	6			
Sand			6	110			
Slate			110	128	Water	128-132	5 bailers per hr.
Coal			128	132			
Slate			132	177			
Sand			177	239	Water	200	Hole Full
Slate			239	250			
Sand			250	275			
Slate			275	290			
Sand			290	470			
Coal			470	472			
Sand			472	506			
Coal			506	509			
Slate			509	542			
Sand			542	573			
Slate			573	647			
Sand			647	665			
Slate			665	675			
Sand			675	717			
Slate			717	730			
Sand			730	750			
Coal			750	754			
Slate			754	885			
Coal			885	887			
Slate			887	966			
Sand			966	1074			
Slate			1074	1082			
Coal			1082	1086			



JAN 3 1961

Formation	Color	Hard or Soft	Top	Bottom	Oil, Gas or Water	Depth Found	Remarks
Lime		Hard	1086	1102			
Coal			1102	1104			
Sand			1104	1173			
Slate			1173	1213			
Lime			1213	1293			
Sand			1293	1320			
Lime			1320	1350			
Slate			1350	1405			
Sand			1405	1498			
Grampus			1498	1630			
Slate & Shells			1630	1695			
Salt Sand			1695	2075	Water	1820	Hole Full
Lime			2075	2120			
Slate			2120	2190			
Lime			2190	2256			
Maxon Sand			2256	2358	Water	2315	2 bailers per hr
Red Rock			2358	2383			
Slate & Shells			2383	2425			
White sand			2425	2440	Water	2430	2 bailers per hr
Red Rock			2440	2465			
Slate & Shells			2465	2518			
Lime			2518	2560			
Little Lime			2560	2623			
Big Lime			2623	2814			
Injun Sand			2814	2868			
Slate & Shells			2868	3003			
Weir Sand			3003	3147	Gas	3015	67,392 Cu. Ft.
Slate & Shells			3147	3285			
Brown Shale			3285	3294			
Berea Sand			3294	3339	Black Oil	3311	
Black lime			3339	3341	Green Oil	3319	
TOTAL DEPTH				3341			

Date MAY 25 1960, 19

APPROVED THE PURE OIL COMPANY, Owner

By Ray Anderson
(Title)

District Superintendent