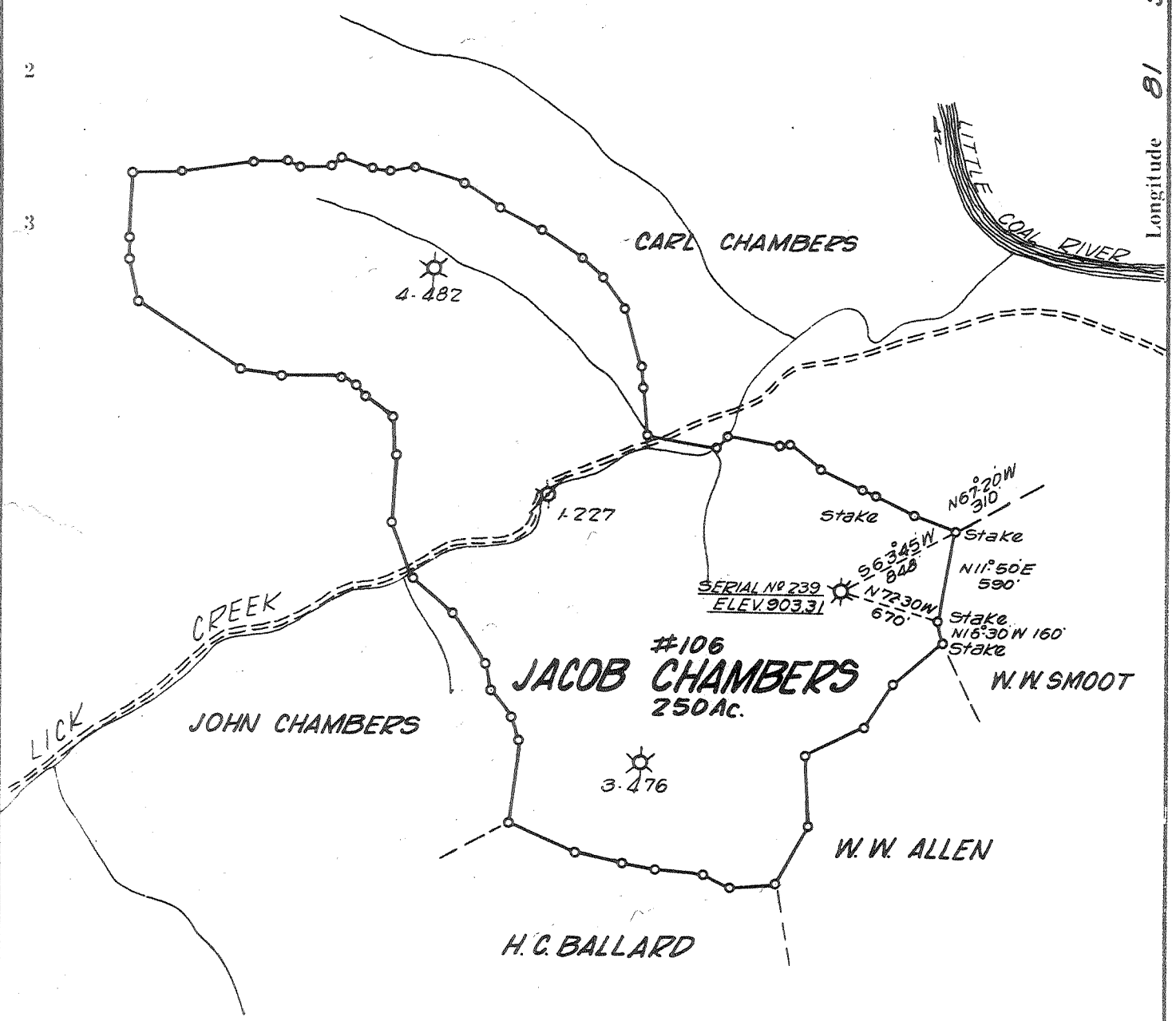


Latitude 38 + 05

Longitude 81 50'



- New Location.
- Drill Deeper.
- Redrill.
- Abandonment.

APR 22 1963

1135 W  
0113

Company **OWENS, LIBBEY-OWENS GAS DEPT.**  
 Address **BOX 4168 CHARLESTON, W. VA.**  
 Farm **JACOB CHAMBERS**  
 Tract Acres **250** Lease No. **106**  
 Well (Farm) No. **2** Serial No. **239**  
 Elevation (Spirit Level) **903.31**  
 Quadrangle **MADISON**  
 County **BOONE** District **SCOTT**  
 Engineer **Fred Ramsey**  
 Engineer's Registration No. **1540**  
 File No. \_\_\_\_\_ Drawing No. \_\_\_\_\_  
 Date **JAN. 3, 1963** Scale **1" = 1000 FT.**

STATE OF WEST VIRGINIA  
 DEPARTMENT OF MINES  
 OIL AND GAS DIVISION  
 CHARLESTON

**WELL LOCATION MAP**  
 FILE NO. **B00-404-A**

Denotes location of well on United States Topographic Maps, scale 1 to 62,500, latitude and longitude lines being represented by border lines as shown.  
 --- Denotes one inch spaces on border line of original tracing.

JACOB CHAMBERS no. 2 (239) - OWENS, LIBBEY-OWENS GAS DEPT. - B00-404-A