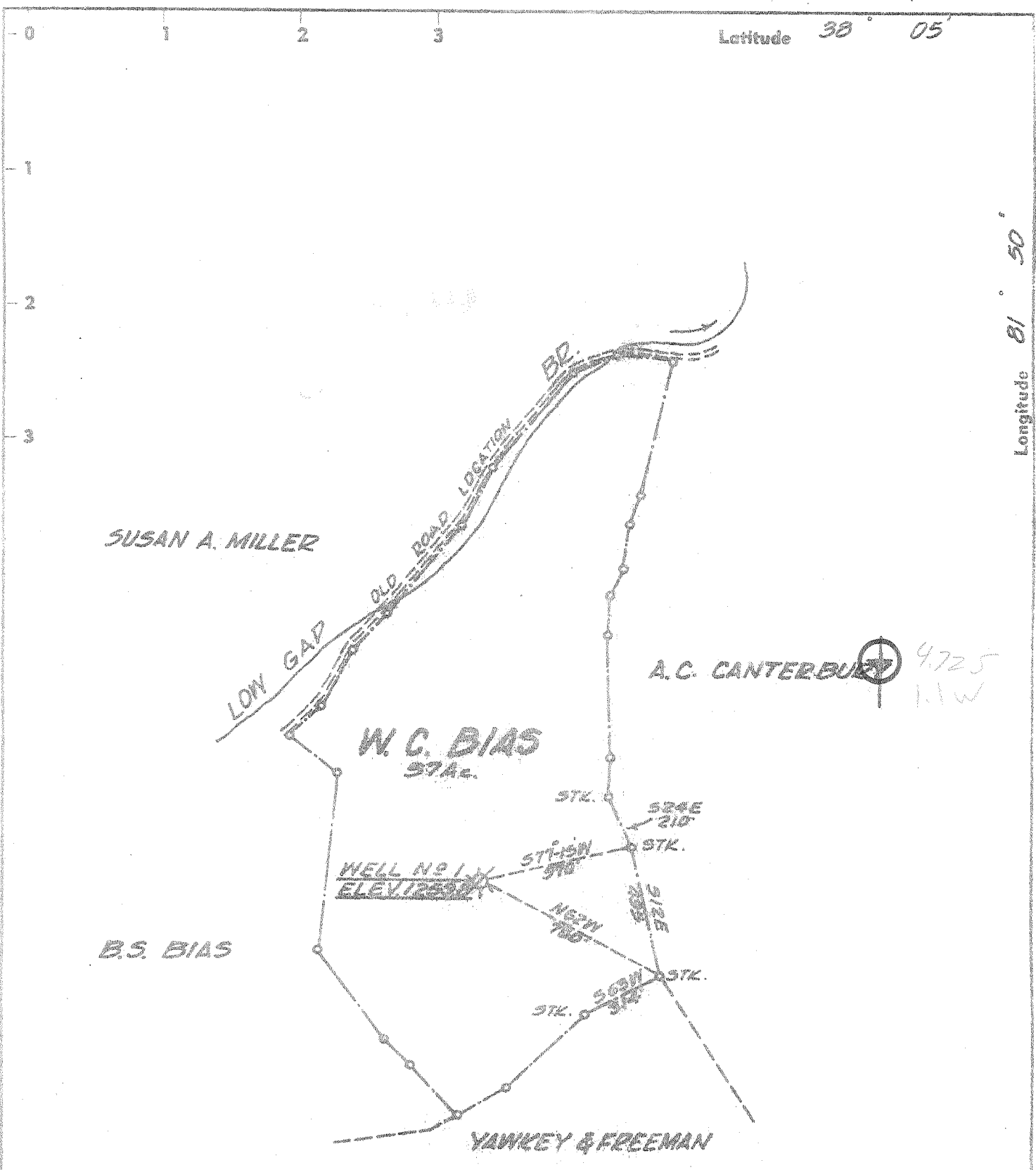


11, 12, 74 *R*



Latitude 38° 05'

Longitude 81° 50'

ACCURACY IS WITHIN 1 PART IN 200  
 ELEV. MADE FROM  
 D.L.O. GAS CO. CONTROL

- New Location
- Drill Deeper
- Redrill
- Abandonment  *11-18-74*

"I, the undersigned, hereby certify that this map is correct to the best of my knowledge and belief and shows all the information required by paragraph 8 of the rules and regulations of the oil and gas section of the mining laws of West Virginia."

Company	BLUE CREEK GAS COMPANY		
Address	BOX 6357 CHARLESTON, W. VA.		
Farm	W. C. BIAS		
Tract	Acres	57	Lease No.
Well (Farm) No.	1	Serial No.	1259.8
Elevation (Spirit Level)	1259.8		
Quadrangle	MADISON	SC	
County	BOONE	District	WASHINGTON
Engineer	<i>[Signature]</i>		
Engineer's Registration No.	<i>[Number]</i>		
File No.	Drawing No.		
Date	JULY 22, 1968		
	Scale	1" = 500 FT.	

STATE OF WEST VIRGINIA  
 DEPARTMENT OF MINES  
 OIL AND GAS DIVISION  
 CHARLESTON

WELL LOCATION MAP

FILE NO. *Box - 454-A*

+ Denotes location of well on United States Topographic Maps, scale 1 to 62,500, latitude and longitude lines being represented by border lines as shown.

- Denotes one inch spaces on border line of original tracing.

47-005