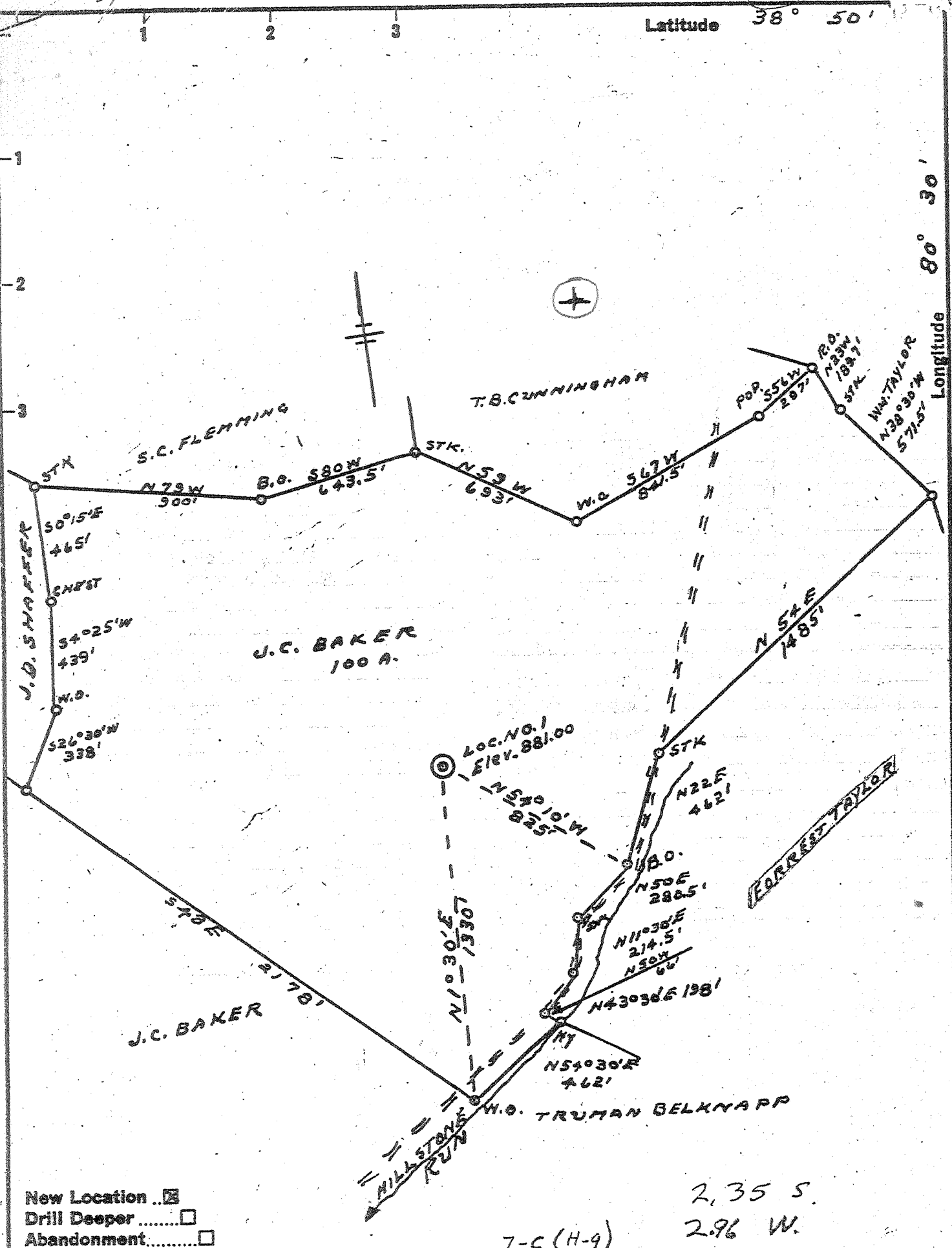


Latitude 38° 50'

Longitude 80° 30'



New Location...
 Drill Deeper.....
 Abandonment.....

2,35 S.
 2.96 W.
 7-C (H-9)

Company J.C. BAKER & SON INC.
 Address GASSAWAY, W.VA.
 Farm J.C. BAKER
 Tract _____ Acres 100 Lease No. _____
 Well (Farm) No. 1 Serial No. _____
 Elevation (Spirit Level) 881.00
 Quadrangle BURNSVILLE SE
 County BRAXTON District SALT LICK
 Engineer C. F. Dyer
 Engineer's Registration No. 804
 File No. _____ Drawing No. _____
 Date 3-30-61 Scale 1" = 500'

STATE OF WEST VIRGINIA
 DEPARTMENT OF MINES
 OIL AND GAS DIVISION
 CHARLESTON

WELL LOCATION MAP
 FILE NO. BRAX-447-W

+ Denotes location of well on United States Topographic Maps, scale 1 to 62,500, latitude and longitude lines being represented by border lines as shown.

- Denotes one inch spaces on border line of original tracing.

Gas Well

158 IMPERIAL TRACING CLOTH T. R. 34727
 No Sample 3-3 330 ~~Deep Well~~



STATE OF WEST VIRGINIA
DEPARTMENT OF MINES
OIL AND GAS DIVISION /

Quadrangle Burnsville

Permit No. BRAX-1147

WELL RECORD

Oil or Gas Well Gas
(KIND)

Company J. C. Baker & Son, Inc.
Address Gassaway, W. Va.
Farm J. C. Baker & Son, Inc. Acres 100
Location (waters) Kanawha River
Well No. 1 Elev. 881
District Salt Lick County Braxton
The surface of tract is owned in fee by J. C. Baker & Son, Inc.
Address Gassaway, W. Va.
Mineral rights are owned by Same
Address _____
Drilling commenced April 11, 1961
Drilling completed November 20, 1961
Date Shot _____ From _____ To _____
With _____
Open Flow _____ /10ths Water in _____ Inch
_____ /10ths Merc. in _____ Inch
Volume _____ Cu. Ft.
Rock Pressure _____ lbs. _____ hrs.
Oil _____ bbls., 1st 24 hrs.
WELL ACIDIZED _____

Casing and Tubing	Used in Drilling	Left in Well	Packers
Size			Kind of Packer
16	17	17	
18	333	333	Size of
8 3/4	1794	1794	
6 5/8	4091	4091	Depth set
5 3/16	6722	6722	
3			Perf. top
2			Perf. bottom
Liners Used			Perf. top
			Perf. bottom

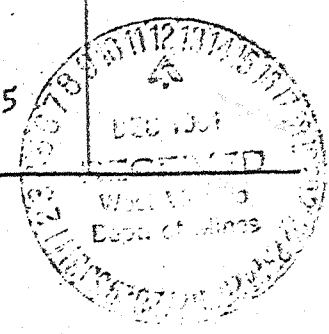
CASING CEMENTED _____ SIZE 5 No. Ft. 450 Date
125 sks. cement, 3 sks. squagel GARATON
COAL WAS ENCOUNTERED AT _____ FEET _____ INCHES
_____ FEET _____ INCHES FEET _____ INCHES
_____ FEET _____ INCHES FEET _____ INCHES

WELL FRACTURED December 4, 1961

RESULT AFTER TREATMENT 5/10 water 1" 23,560 cu. ft.
ROCK PRESSURE AFTER TREATMENT 900 lbs. in 12 hours
Fresh Water _____ Feet Salt Water _____ Feet

Formation	Color	Hard or Soft	Top	Bottom	Oil, Gas or Water	Depth	Remarks
Surface			0	15			
Sand Rock			15	40	Water	35'	2-Bailers PH
Blue Slate			40	69			
Lime			69	90			
Blue Slate			90	128			
Grey Lime			128	140			
Pink Rock			140	151			
Slate & Shells			151	185	Water	170	3 Bailers PH
Sand			185	195			
Slate			195	237			
Lime			237	275			
Sand			275	334	Water Gas	297-310 330	Smell
Slate			334	336			
Sand			336	345			
Blue Slate			345	362			
Slate & Shells			362	396			
Gritty Lime			396	415			
Sand			415	495	Gas Gas	476 481	Show Big Show
Slate			495	509			
Lime			509	518			
Slate & Shells			518	552			
Black Lime			542	560	Gas	550	Show
Sand			560	580			
Slate			580	652			
Lime, Shells & Slate			652	774			
Sand			774	820	Gas	785	
Slate			820	830			
S and			830	861			

(over)



Box 447

Clv. 881

Formation	Color	Hard or Soft	Top /	Bottom	Oil, Gas or Water	Depth Found	Remarks
Brown Slate			861	902	Gas	868-878	Show
Sand			902	965			
Slate & Shells			965	970			
Broken Sand			970	978			
Black Slate and Shells			978	1033			
Broken Sand			1033	1055			
Salt Sand			1055	1085			
Black Slate			1085	1094			
Grey Lime			1094	1108			
Salt Sand			1108	1200	Oil	1184-1189	Show
Lime			1200	1212			
Red Rock			1212	1217			
Blnd Slate			1217	1223			
Red Rock			1223	1227			
Slate			1227	1245			
Grey Lime			1245	1253			
Red Rock			1253	1260			
Gritty Lime			1260	1265			
Blue Sand			1265	1281			
Red Rock			1281	1315			
Slate			1315	1325			
Red Rock			1325	1330			
Slate & Shells			1330	1345			
Black Lime			1345	1374			
Maxon Sand			1374	1414			
Slate			1414	1416			
Sand			1416	1432			
Big Lime			1432	1522			
Keener Sand			1522	1543			
Gritty Lime			1543	1592			
Sand - Iron			1592	1618			
Black Lime			1618	1625			
Slate & Shells			1625	1665			
Sand			1665	1700			
Lime			1700	1705			
Slate & Lime Shells			1705	1877			
Sand			1877	1905			
Slate			1905	1911			
Lime			1911	1921			
Sand			1921	1960			
Gritty Lime			1960	1969			
Red Sand			1969	1980			
Slate & Shells			1980	2540	Gas	2324	
Lime			2540	2650	Gas	2502	
Sandy Lime			2650	2811	Gas	2512	
Slate & Shells			2811	3525	Gas	2568-2573	2/10 W-1"
Sandy Lime			3525	3606			
Slate & Shells			3606	3635			
Hard Lime			3635	3670			
Lime & Slate			3670	3870			
Slate & Shells			3870	4048			
Black Lime			4048	4060			
Slate & Shells			4060	5725			
Black Lime			5725	5731			
Slate & Shells			5731	5765			
Black Lime			5765	5796			
Slate			5796	5825			
Black Lime			5825	5850			
Slate & Shells			5850	6350			
Brown Shale			6350	6387			
Black Shale			6387	6480	gas	6387-6400	
Brown Shale			6480	6656			
Hard Lime	ONONDAGA	6656-6869	6656	6869	gas show	432 Mcf (blow down)	
Hard Sand	CRISTANY	6869-6972	6869	6972		in chert.	
Lime	HELDREBERG		6972				
		Total Depth	7175				

Date December 11, 1961

APPROVED J. C. Baker & Son, Inc. Owner

By J. C. Baker (Title)



STATE OF WEST VIRGINIA
DEPARTMENT OF MINES
OIL AND GAS DIVISION 2

Quadrangle Burnsville

Permit No. BRAX-447 Work over

WELL RECORD

Oil or Gas Well Gas
(KIND)

Company J. C. Baker & Son, Inc.
 Address Gassaway, West Virginia
 Farm J. C. Baker & Son, Inc. Acres 100
 Location (waters) Little Kanawha
 Well No. 1 Elev. 881'
 District Salt Lick County Braxton
 The surface of tract is owned in fee by J. C. Baker & Son, Inc.
 Address Gassaway, W. Va.
 Mineral rights are owned by J. C. Baker & Son, Inc.
 Address Gassaway, W. Va.
 Drilling commenced No drilling done
 Drilling completed 1961 - Fractured July of 1963
 Date Shot _____ From _____ To _____
 With _____
 Open Flow _____ /10ths Water in _____ Inch
 _____ /10ths Merc. in _____ Inch
 Volume ~~_____~~ _____ Cu. Ft.
 Rock Pressure _____ lbs. _____ hrs.
 Oil _____ bbls., 1st 24 hrs.
 WELL ACIDIZED _____

Casing and Tubing	Used in Drilling	Left in Well	Packers
Size			Kind of Packer
16			
13			Size of
8 1/2			
6 3/4			Depth set
5 3/16			
3			Perf. top
2			Perf. bottom
Liners Used			Perf. top
			Perf. bottom

CASING CEMENTED 5 1/2 SIZE 4160' No. Ft 7/13/63 Date
GARATON

COAL WAS ENCOUNTERED AT _____ FEET _____ INCHES
 _____ FEET _____ INCHES _____ FEET _____ INCHES
 _____ FEET _____ INCHES _____ FEET _____ INCHES

WELL FRACTURED July 19, 1963

RESULT AFTER TREATMENT 1,000,000 cu. ft.
 ROCK PRESSURE AFTER TREATMENT 1250#

Fresh Water _____ Feet Salt Water _____ Feet

Formation	Color	Hard or Soft	Top	Bottom	Oil, Gas or Water	Depth	Remarks
Benson Sand				4048			
TOTAL DEPTH				4160			
							PARTIAL PLUGGED AND FRACTURED
							6656 881 5775
							4048 881 3167

