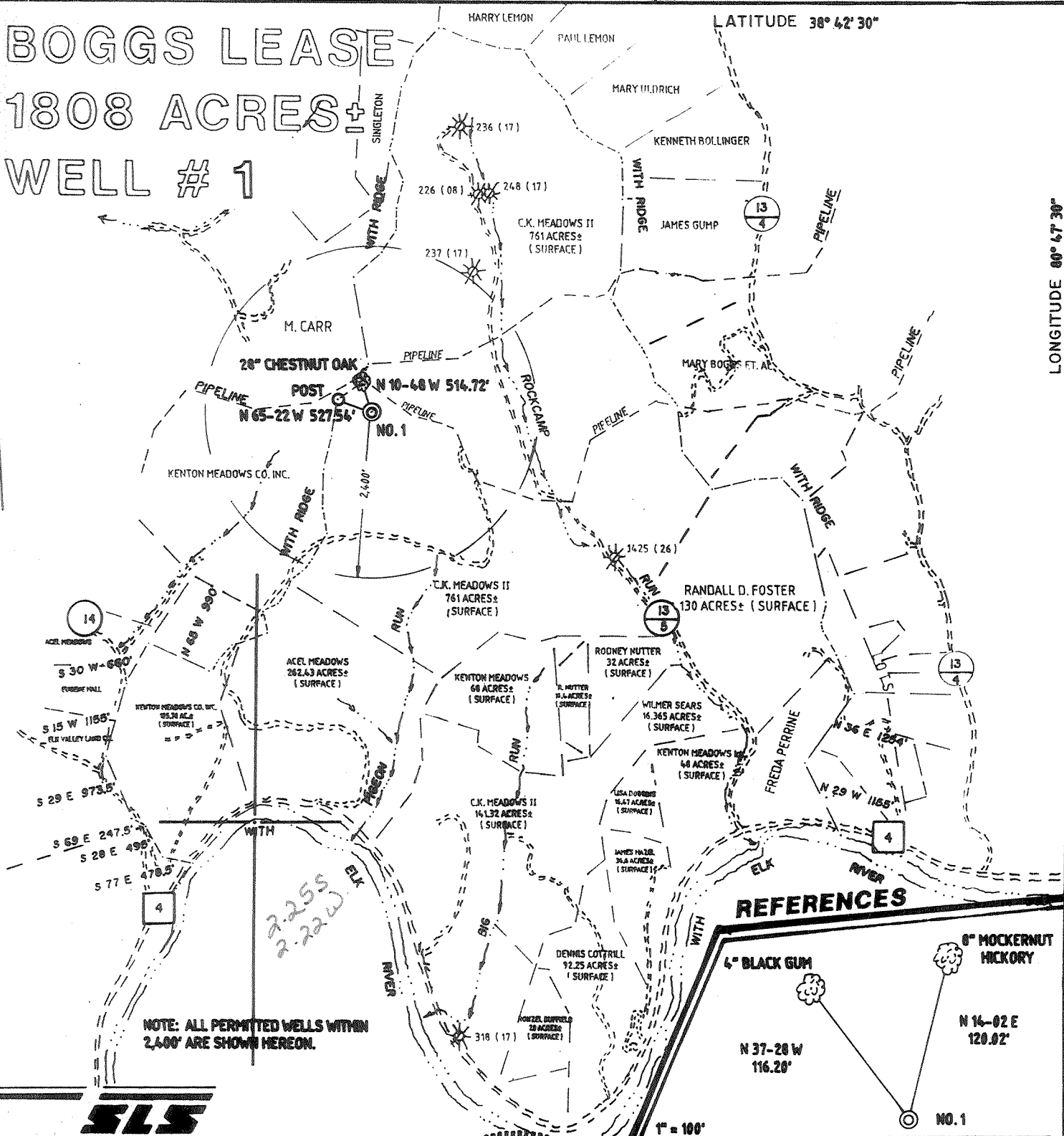


BOGGS LEASE 1808 ACRES± WELL # 1

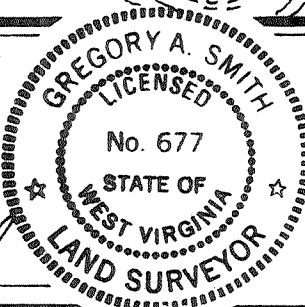
NORTH

LONGITUDE 80° 42' 30"



I THE UNDERSIGNED, HEREBY CERTIFY THAT THIS PLAT IS CORRECT TO THE BEST OF MY KNOWLEDGE AND BELIEF AND SHOWS ALL THE INFORMATION REQUIRED BY LAW AND THE REGULATIONS ISSUED AND PRESCRIBED BY THE DEPARTMENT OF ENERGY.

L.L.S. Gregory A. Smith
677



(+) DENOTES LOCATION OF WELL ON UNITED STATES TOPOGRAPHIC MAPS.
DATE JULY 21, 19 96
OPERATORS WELL NO. BOGGS # 1
API WELL NO. 47 - 007 - 2165
STATE COUNTY PERMIT

MINIMUM DEGREE OF ACCURACY 1 / 200 FILE NO. 3260 (53 - 21)
PROVEN SOURCE OF ELEVATION TOP OF KNOB ELEVATION 1462' SCALE 1" = 2000'

STATE OF WEST VIRGINIA
DEPARTMENT OF ENERGY
OIL AND GAS DIVISION



WELL TYPE: OIL GAS LIQUID INJECTION WASTE DISPOSAL IF "GAS" PRODUCTION STORAGE DEEP SHALLOW
LOCATION: ELEVATION 1361' WATERSHED ROCKCAMP RUN OF ELK RIVER
DISTRICT OTTER COUNTY BRAXTON QUADRANGLE GASSAWAY 7.5'
SURFACE OWNER C.K. MEADOWS II ACREAGE 761
ROYALTY OWNER E.L. BOGGS HEIRS ET. AL. LEASE ACREAGE 761 OF 1808
PROPOSED WORK: LEASE NO. _____
DRILL CONVERT DRILL DEEPER REDRILL FRACTURE OR STIMULATE PLUG OFF OLD FORMATION PERFORATE NEW FORMATION PLUG AND ABANDON CLEAN OUT AND REPLUG OTHER _____
PHYSICAL CHANGE IN WELL (SPECIFY) _____ TARGET FORMATION ORISKANY
ESTIMATED DEPTH 6500'

WELL OPERATOR MIKE ROSS Inc. DESIGNATED AGENT MIKE ROSS JUN 16 1997
ADDRESS BOX 219 COALTON, WV. 26257 ADDRESS BOX 219 COALTON, WV. 26257

DEEP WELL 3 X-6 0

COUNTY NAME PERMIT

RECEIVED

WR - Environmental Protection

WV Division of

API # 47- 10-Jun-97
7-02165

JAN 21 1998

State of West Virginia
Division of Environmental Protection
Section of Oil and Gas

Permitting
Office of Oil & Gas

Well Operator's Report of Well Work

Farm name: MEADOWS, C.K. Operator Well No.: BOGGS #1

LOCATION: Elevation: 1,381.00 Quadrangle: GASSAWAY

District: OTTER County: BRAXTON
Latitude: 11900 Feet South of 38 Deg. 42Min. 30 Sec.
Longitude 11750 Feet West of 80 Deg. 47 Min. 30 Sec.

Company: ROSS & WHARTON GAS CO., I
RT. 6, BOX 123
BUCKHANNON, WV 26201-0000

Agent: MIKE ROSS

Inspector: CRAIG DUCKWORTH
Permit Issued: 06/09/97
Well work Commenced: 10/19/97
Well work Completed: 10/25/97
Verbal Plugging
Permission granted on: _____
Rotary x Cable _____ Rig _____
Total Depth (feet) 6910
Fresh water depths (ft) None

Salt water depths (ft) 6710'
2" stream at 1500'

Is coal being mined in area (Y/N)? N
Coal Depths (ft): 1016-1022

| Casing & Tubing Size | Used in Drilling | Left in Well | Cement Fill Up Cu. Ft. |
|---|------------------|--------------|------------------------|
| 8 5/8 | 1441' | 1441' | 395 sks |
| 4 1/2 | | 2200 | 220 sks |
| First cement job lost all cement. Had to squeeze & use green sawdust for loss of circulation material. Recemented with 100 sks thix-a-topic cement. | | | |
| Plugged well back with cement & gel to 2240'. Will cement & treat Big Injun. | | | |

OPEN FLOW DATA

Producing formation Big Injun Pay zone depth (ft) 2020-2140
Gas: Initial open flow Show MCF/d Oil: Initial open flow _____ Bbl/d
Final open flow _____ MCF/d Final open flow _____ Bbl/d
Time of open flow between initial and final tests 4 Hours
Static rock Pressure _____ psig (surface pressure) after 72 Hours

Second producing formation _____ Pay zone depth (ft) _____
Gas: Initial open flow _____ MCF/d Oil: Initial open flow _____ Bbl/d
Final open flow _____ MCF/d Final open flow _____ Bbl/d
Time of open flow between initial and final tests _____ Hours
Static rock Pressure _____ psig (surface pressure) after _____ Hours

NOTE: ON BACK OF THIS FORM PUT THE FOLLOWING: 1). DETAILS OF PERFORATED INTERVALS, FRACTURING OR STIMULATING, PHYSICAL CHANGE, ETC. 2). THE WELL LOG WHICH IS A SYSTEMATIC DETAILED GEOLOGICAL RECORD OF ALL FORMATIONS, INCLUDING COAL ENCOUNTERED BY THE WELLBORE.

MIKE ROSS, INC., dba

For: ROSS & WHARTON GAS CO., INC.

By: Mike Ross

Date: November 21, 1997

JAN 23 1998

Fractured November 10, 1997

1st Stage - Perfs @ 2020-2140, 1,500 Gal Acid, 450 BBLs Water, 453 sks 20/40 Sand
74,000 SCF N₂

| | | | |
|-----------------|------|------|----------------------|
| KB | 0 | 10 | |
| Clay | 10 | 20 | |
| Sand & Shale | 20 | 1016 | |
| Coal | 1016 | 1022 | |
| Sand | 1022 | 1500 | |
| Maxton | 1500 | 1540 | 2" stream salt water |
| Sandy Shale | 1540 | 1750 | |
| Little Lime | 1750 | 1850 | |
| Blue Monday | 1850 | 1910 | |
| Pencil Cave | 1910 | 1922 | |
| Big Lime | 1922 | 2020 | |
| Injun | 2020 | 2140 | Show of gas |
| Sandy Shale | 2140 | 4630 | |
| Benson | 4630 | 4650 | |
| Sandy Shale | 4650 | 6680 | |
| Marcellus Shale | 6680 | 6710 | Salt water |
| Chert | 6710 | 6910 | TD |

Plugged well back with cement and gel to 2240 ft. Will cement and treat Big Injun.

| | | |
|--------|------|------|
| Cement | 6910 | 6600 |
| Gel | 6600 | 3300 |
| Cement | 3300 | 3100 |
| Gel | 3100 | 2400 |
| Cement | 2400 | 2200 |

6910
2140

(4770) expl. stg.