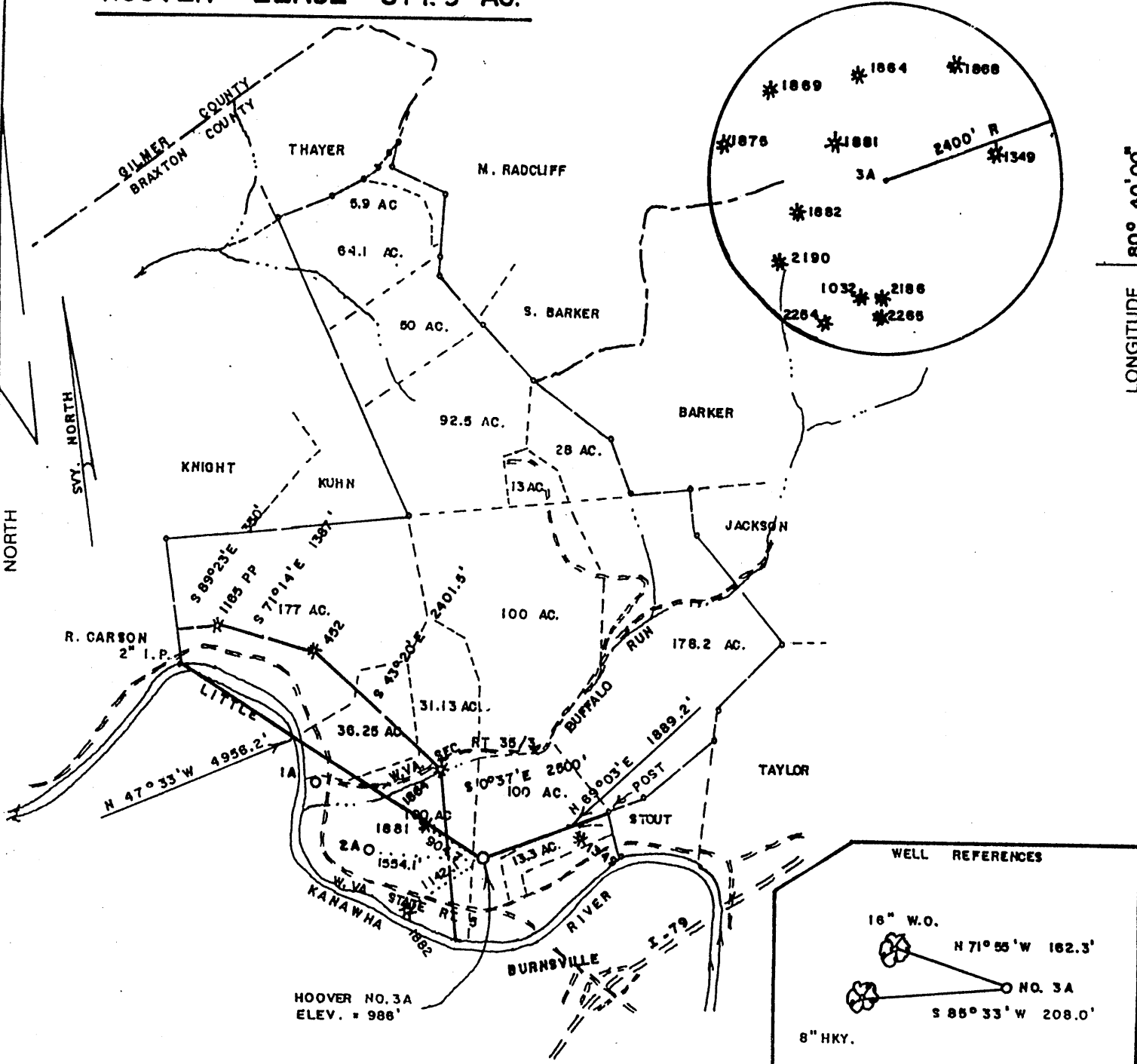


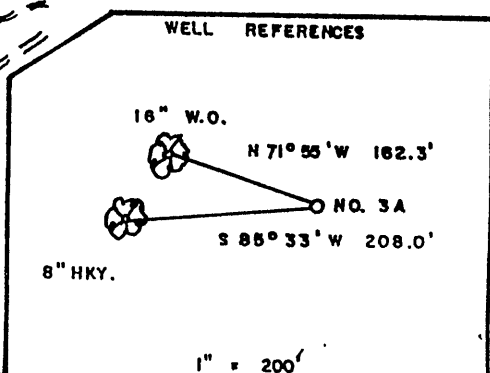
80' W

LATITUDE 38° 52' 30"

HOOVER LEASE 871.5 AC.



S 42° 4' 00" 00' 04" 80° 40' 00" LONGITUDE



(+) DENOTES LOCATION OF WELL ON UNITED STATES TOPOGRAPHIC MAPS

FILE NO. _____
 DRAWING NO. _____
 SCALE 1" = 2000'
 MINIMUM DEGREE OF ACCURACY 1/200
 PROVEN SOURCE OF ELEVATION JCT. of RT. 5 and 35/5
ELEV. = 763'

I THE UNDERSIGNED, HEREBY CERTIFY THAT THIS PLAT IS CORRECT TO THE BEST OF MY KNOWLEDGE AND BELIEF AND SHOWS ALL THE INFORMATION REQUIRED BY LAW AND THE REGULATIONS ISSUED AND PRESCRIBED BY THE DEPARTMENT OF ENERGY.
 (SIGNED) Mark C. Echard
 R.P.E. _____ L.L.S. 490



STATE OF WEST VIRGINIA
 Division of Environmental Protection
 OFFICE OF OIL AND GAS



DATE JULY 17, 2003
 OPERATOR'S WELL NO. HOOVER NO. 3A
 API WELL NO. 47-007-02312

WELL TYPE: OIL GAS LIQUID INJECTION WASTE DISPOSAL
 (IF "GAS.") PRODUCTION STORAGE DEEP SHALLOW
 LOCATION: ELEVATION 986' WATER SHED LITTLE KANAWHA RIVER
 DISTRICT SALT LICK COUNTY BRAXTON
 QUADRANGLE BURNSVILLE 7.5'
 SURFACE OWNER FRED KUHN ACREAGE 871.5
 OIL & GAS ROYALTY OWNER FRED KUHN LEASE ACREAGE 871.5
 LEASE NO. _____

PROPOSED WORK: DRILL CONVERT DRILL DEEPER REDRILL FRACTURE OR STIMULATE PLUG OFF OLD FORMATION PERFORATE NEW FORMATION OTHER PHYSICAL CHANGE IN WELL (SPECIFY) _____

PLUG AND ABANDON CLEAN OUT AND REPLUG
 TARGET FORMATION BENSON ESTIMATED DEPTH 5000'
 WELL OPERATOR HORIZON ENERGY CORP. DESIGNATED AGENT ROBERT R. JONES II
 ADDRESS SAND FORK ROAD BOX III SAND FORK, WV 26430 ADDRESS SAND FORK ROAD BOX III SAND FORK, WV 26430

COUNTY NAME BRAXTON PERMIT 2312

State of West Virginia
Division of Environmental Protection
Section of Oil and Gas

Handwritten initials

Farm Name: Kuhn Lease Operator Well No.: Hoover No. 3-A

LOCATION: Elevation: 986' Quadrangle: Burnsville 7.5'

District: Salt Lick County: Braxton
Latitude: 4.420 Feet South of 38 Deg. 52 Min. 30 Sec.
Longitude: 80 Feet West of 80 Deg. 40 Min. 00 Sec.

Company: Horizon Energy Corporation

	Casing & Tubing	Used in Drilling	Left in Well	Cement fill Up Cu. Ft.
Address: P.O. Box 111 Sand Fork, WV 26430				
Agent: Robert R. Jones, II	8 5/8	850	795	110 sks
Inspector: Craig Duckworth				
Date Permit Issued: July 29, 2003	4 1/2	4720	4644	410 sks
Date Well Work Commenced: August 11, 2003				
Date Well Work Completed: August 18, 2003				
Verbal Plugging: N/A				
Date Permission granted on: N/A				
Rotary: X Cable: Rig:				
Total Depth (ft.): 4720'				
Fresh Water Depth (ft.): N/A				
Salt Water Depth (ft.): None Encountered				
Is coal being mined in area (N/Y)? N				
Coal depth (ft.): N/A				

OPEN FLOW DATA

Producing formation Benson Pay zone depth (ft.) 4520-4585
Gas: Initial open flow 25 MCF/d Oil: Initial open flow 0 Bbl/d
Final open flow 500 MCF/d Final open flow 0 Bbl/d
Time of open flow between initial and final tests _____ Hours
Static rock pressure 1000# psig (surface pressure) after 48 Hours

Second Producing formation Balltown/Big Injun Pay zone depth (ft.) 1980-3330
Gas: Initial open flow * MCF/d Oil: Initial open flow _____ Bbl/d
Final open flow * MCF/d Final open flow _____ Bbl/d
Time of open flow between initial and final tests _____ Hours
Static rock pressure _____ psig (surface pressure) after _____ Hours

* = commingled zones

NOTE: ON BACK OF THIS FORM PUT THE FOLLOWING: 1). DETAILS OF PERFORATED INTERVALS, FRACTURING OR STIMULATING, PHYSICAL CHANGE, ETC. 2). THE WELL LOG WHICH IS A SYSTEMATIC DETAILED GEOLOGICAL RECORD OF ALL FORMATIONS, INCLUDING COAL ENCOUNTERED BY THE WELLBORE.

Signed: Robert R. Jones, II
By: President
Date: 08-25-2003

OCT 3 2003

BRA 2312

HOOVER NO. 3-A

47-007-02312

Treated Benson Formation 08-18-03

<u>Stage#</u>	<u>perfs</u>	<u>sand</u>	<u>avg rate</u>	<u>isip</u>
#1 Benson	4520-4538	600 sks	28 bpm	2158#
#2 Balltown	2978-3320	400 sks	28 bpm	2098#
#3 Gordon	2310-2510	300 sks	28 bpm	1997#
#4 Big Injun	1980-2013	400 sks	28 bpm	1157#

Drillers Log

Electric log tops

Clay	0	5		Big Lime 1850
Sd/Sh	5	704		Gordon 2410
RR	704	720		Benson 4502
Sd/Sh	720	950		
Sd	950	1120		
Sd/Sh	1120	1740		
LL	1740	1789		
Sh	1789	1796		
BL	1796	1906	gas ck @ 1817' = no show	
Sd	1906	2006		
Sd/Sh	2006	2400	gas ck @ 2409' = 94 mcfs	
Sd	2400	2435		
Sd/Sh	2435	2473	gas ck @ 3495' = 94 mcfs	
Sh	2473	2525		
Sd/Sh	2525	4530		
Sd	4530	4550	gas ck @ 4401' = 84 mcfs	
Sd/Sh	4550	4720		
TD	4720		gas @ TD = 84 mcfs	