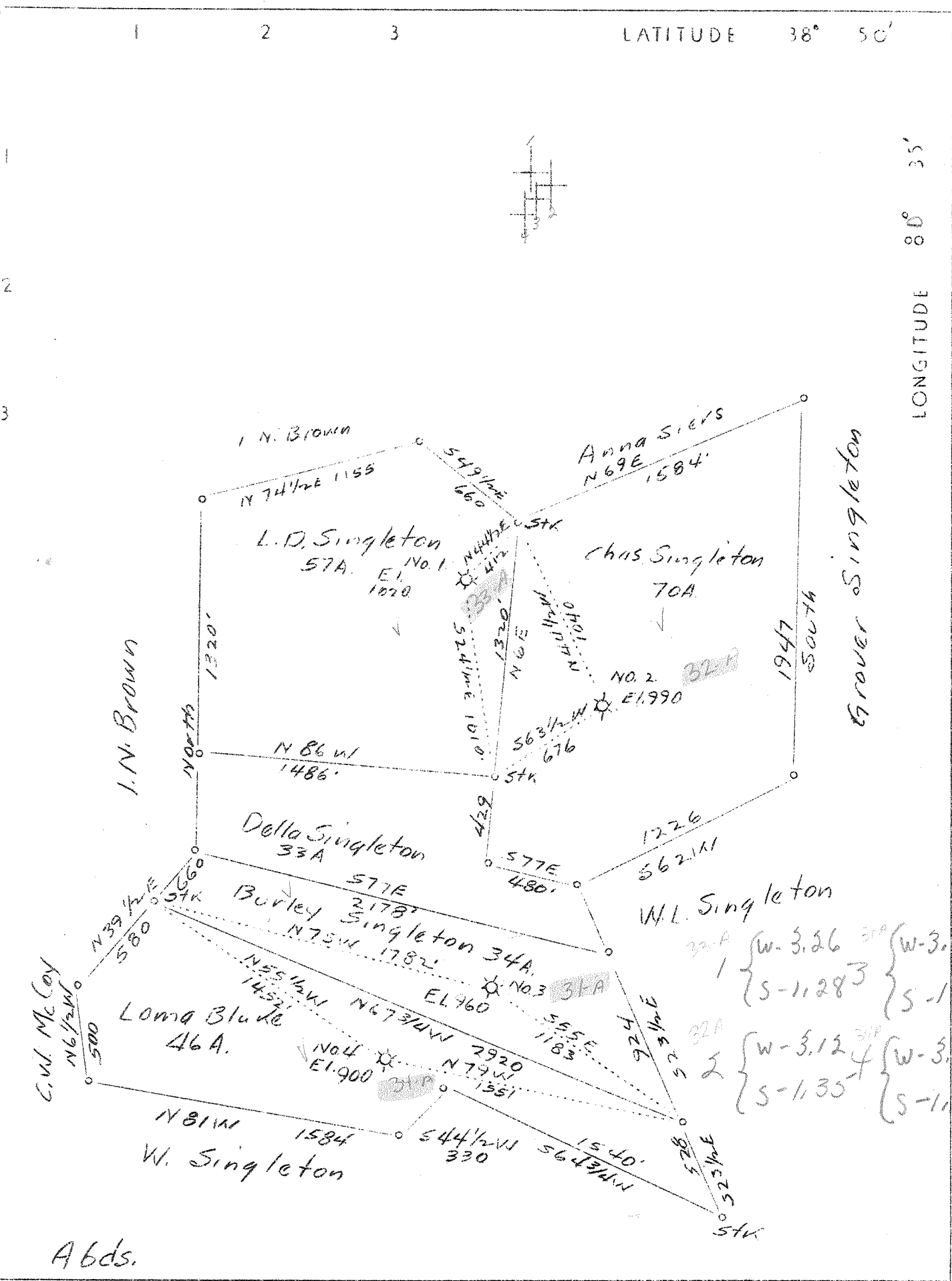


M

LATITUDE 38° 50'

LONGITUDE 80° 35'



33A { W-3.26 } S-1.283 } S-1.046
 34A { W-3.12 } S-1.35 } S-1.59

Company W. S. Perry
 Address Charleston, W. Va.
 Farm Singleton, L. C. Chas.,
 & Burley & Loma Blake
 Tracts 4 tracts
 Acres 207.0
 Well (Farm) No. 1, 2, 3 and 4
 Elevation (SL) Bar. - See plat
 Quadrangle Burnsville
 County Braxton
 District Salt Lick
 Engineer C. E. Krebs
 Eng. Reg. No. 9
 File No. 11-649
 Date Oct. 10, 1939
 Scale 1" = 660'

STATE OF WEST VIRGINIA
 Department of Mines
 OIL & GAS DIVISION
 Charleston

WELL LOCATION MAP
 File No. BRAX-32A-34A
 inclusive

x Denotes location of well on U. S. Topo-
 graphic Maps, scale 1 to 62,500, latitude
 and longitude lines being represented by
 border lines as shown.
 - Denotes one inch spaces on border line
 of original tracing.