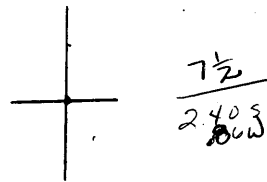


LATITUDE 38°45' (7/2)

80°47'30"

LONGITUDE



Location determined  
 from description on Well Record  
 and Equitable Res. Farm Maps L-24 7'5 OGIS topo location

7.5' loc \_\_\_\_\_ 15' loc \_\_\_\_\_  
 \_\_\_\_\_ (calc.) \_\_\_\_\_

\* 71 on Map of 1917 Braxton Co. Rept.

Company Horse Natural Gas

Farm J. G. Perrine (2350)

Quad Sassanway 7 1/2 / Sassanway's NE

County Braxton

District Otter

WELL LOCATION MAP

File No. 007-70034 By farm

J. G. FERRINE NO. 2350 WELL.  
(No. 71 on Braxton County Map II).  
(Record published on pp. 314-315,  
of Braxton-Clay Report).

X  
Otter District, Braxton County; on Grasslick Run, 0.8 mi.  
N. 15° E. of Sugar Knob, and 3 miles northwest of Gassaway;  
authority, Hope Natural Gas Co.; completed February 16, 1912;  
elevation, 1060' B. Gassaway  
7/2

|   | Top. | Bottom. |
|---|------|---------|
| Sand, Burning Springs (Upper Freeport),<br>(gas at 415'; 3/10 W. through 1"<br>opening, 20,000 cu. ft.) | 397  | 470     |
| Sand, Second Cow Run  | 598  | 630     |
| Sand, First Salt  | 750  | 800     |
| Sand, Maxten  | 1470 | 1700    |
| Big Lime  | 1805 | 1860    |
| Sand, Big Injun   | 1860 | 2015    |
| Sand, Squaw   | 2108 | 2130    |
| No Gantz, Fifty-feet, Thirty-foot,<br>Gorden Stray, Gorden, or Fourth Sands.                            |      |         |
| Sand, Fifth, limy sheets, (smell of<br>gas at 2640')  | 2640 | 2645    |

13" casing: put in well, 85', left in well, 38-1/3';  
10" casing: put in well, 127-5/6'; left in well, 52-1/6";  
8 1/4" casing: put in well, 944'.

Well started about 230 feet below the horizon of the Pittsburgh Coal.