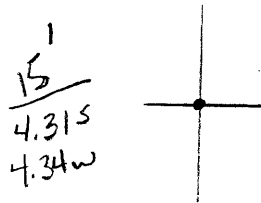


LATITUDE

38°45'(15')

(S) 05 08

LONGITUDE



on tributary of Slick Creek

7'5 OGIS topo location

7.5' loc _____	15' loc _____
_____	(calc.) _____

#101 on Map II of 1917 Co. Rep.

Company J. S. Carr et al

Farm Baldwin Heirs 5

Quad on map 15 116

County Braxton

District Birch

WELL LOCATION MAP

File No. 007-70093

007-70093

Baldwin Heirs No. 5 Well Record (No. 101 on Map II).

Birch District, Braxton County; on Steer Creek, 1.7 miles just north of east of Sleith; authority, G. L. McKain; completed, November 17, 1905; elevation, 850' B.

	Thickness.	Total.
	Feet.	Feet.
Clay	10	10
Gravel	13	23
Lime	17	40
Sand, Morgantown.....	45	85
Red rock.....	15	100
Lime	20	120
Red rock.....	8	128
Lime	10	138
Red rock.....	15	153
Lime	10	163
Red rock.....12' }		
Slate, white.....15' }		
Red rock.....10' }	37	200
Slate, white.....	100	300
Lime	10	310
Red rock.....	35	345
Lime	15	360
Slate, white.....	43	403
Sand, Little Dunkard.....	15	418
Slate, white.....	10	428
Slate, black.....	20	448
Slate, white.....	5	453
Limestone, Upper Freeport.....	22	475
Sand, Burning Springs, (Upper Freeport).....	23	498
Limestone	12	510
Sand to bottom.....	4	514

8¼" casing, 155'; 6½" casing, 460'; all casing was pulled; abandoned as a dry hole.