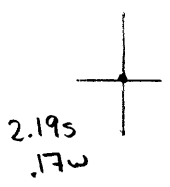


40°15'00"

Latitude

80°37'30"

Longitude



Topo Location

7.5' Loc. _____ 15' Loc. _____
 _____ (calc.) _____

Company JRN Millers Co

Farm Wheeling Steel Corp # 1

15' Quad _____
(sec.)

7.5' Quad Tellonville

District Buffalo

WELL LOCATION PLAT

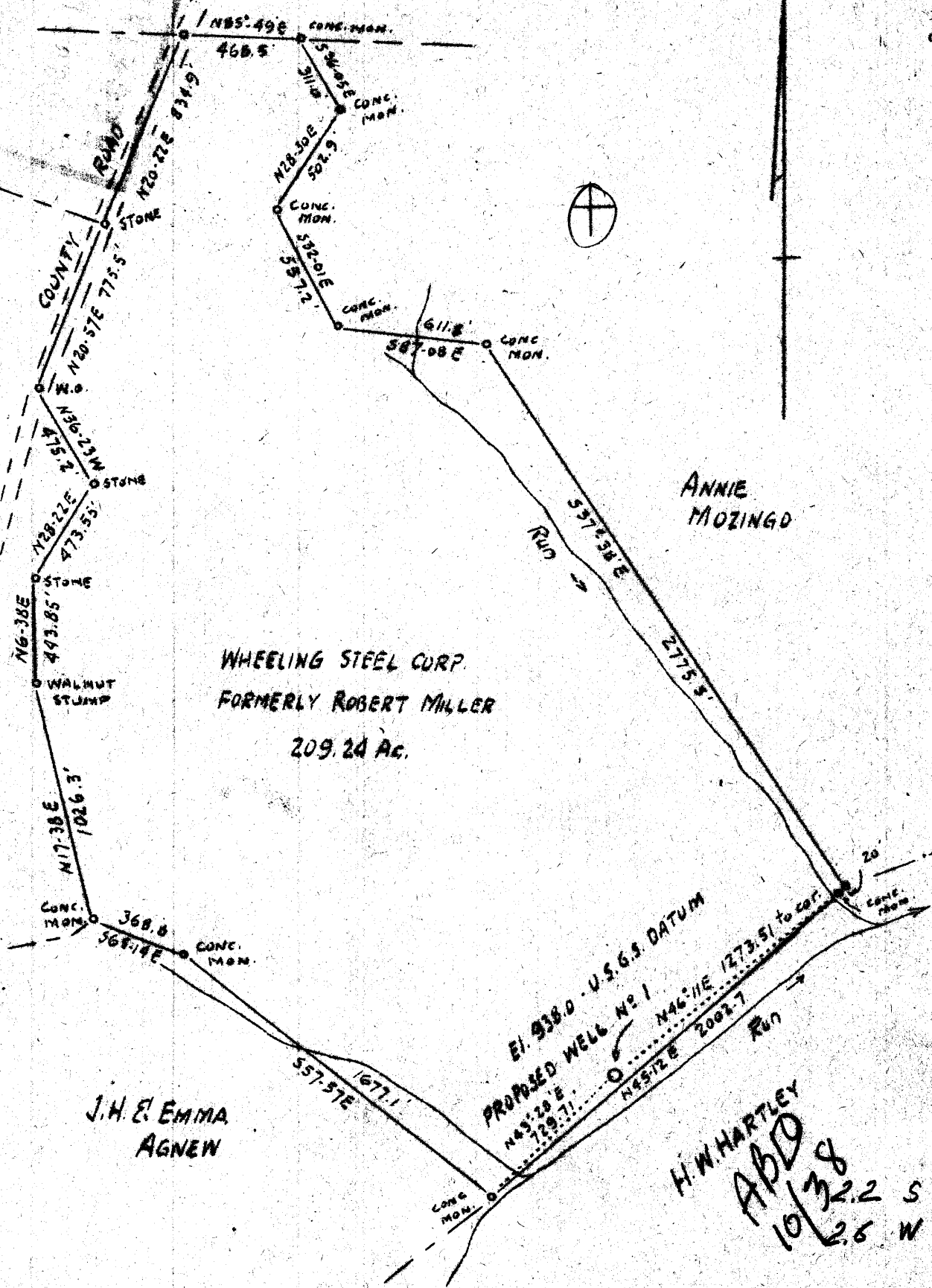
County 009 Permit 15

LATITUDE 40° 15'

LONGITUDE 80° 35'

HETTIE MAINTIRE

WHEELING STEEL CORP.



WHEELING STEEL CORP.
FORMERLY ROBERT MILLER
209.24 AC.

J.H. & EMMA
AGNEW

ANNIE
MAZINGO

EI. 9380 - U.S.G.S. DATUM
 PROPOSED WELL No. 1
 N45°20'E 129.71
 N46°11'E 1273.51 to cor.
 N45°12'E 2092.7 Run
 H.W. HARTLEY
 A.B.D.
 10/3/38
 2.5 S
 2.5 W

Company	J. R. N. Miller & Co.	STATE OF WEST VIRGINIA
Address	33 S. Emily St., Grafton, Penna.	Department of Mines
Farm	Wheeling Steel Corp. (Formerly Robt. T. Miller, Jr.)	OIL & GAS DIVISION
Acres	209	Charleston
Well (Farm) No.	One	WELL LOCATION MAP
Quadrangle	Wheeling N.C.	File No. <u>BRO-15</u>
County	Brooke	
District	Buffalo	x Denotes location of well on U. S. Topo- graphic Maps, scale 1 to 62,500, latitude and longitude lines being represented by border lines as shown.
Engineer	Sidney C. Smith - C. C. Smith's sons	- Denotes one inch spaces on border line of original tracing.
Eng. Reg. No.	240	
Date	August 1, 1938	
Scale	1" = 600'	

1-017

WEST VIRGINIA DEPARTMENT OF MINES

OIL & GAS DIVISION

WELL RECORD

Permit No. Bro-15

Gas Well

Wheeling Quad.

CASIMIR TURING

Company	Joseph R. M. Miller & Co.	10	18
Address	Pittsburgh, Pa.	8-1/4	19
Farm	Wheeling Steel Corp. ACRES -	6-5/8	1412
Location			
Well No.	ELEV. 938	COAL ENCOUNTERED:	
District	Buffalo County Brooke	Feet	Inches
Surface & Mineral	Wheeling Steel Corp., Wheeling, W. Va.	61	
Drilling commenced	Sept. 1, 1938	685	
Drilling completed	Sept. 28, 1938		
Volume	25,000 c.f.		
Rock Pressure	60 lbs. hrs.		
Fresh Water	12, 610		
Salt Water	950		

Formation Color ^{Top} Base Result Formation Color ^{Top} Base Result

Formation	Color	Top	Base	Result	Formation	Color	Top	Base	Result
Clay		0	15						
Lime	grey	15	55						
Shale	grey	55	61						
Coal		61	64						
Shale	black	64	68						
Lime Shell	gr.	68	70						
Sand	white	70	73						
Shale	"	73	75						
Sand	"	75	685						
Coal		685	610	Gas & Water 685 - Gas blew out in 1 1/2 hrs.					
Lime		610	660						
Sand		660	730						
Shale		730	742						
Limy Shale		742	900						
Salt Sand		900	955	3 bailers water 950					
Shale Break in									
Salt Sand		955	1000						
Salt Sand		1000	1030						
Shale		1030	1035						
Big Injun Sand		1035	1365						
Shale		1365	1631						
Stray Sand		1631	1648						
Shale	grey	1648	1680						
Shale	black	1680	1696						
Berea Sand		1696	1722						
Shale & Lime		1722	1845						
Red Rock		1845	1865						
Brown Shale		1865	1884						
Sand 100'	dark	1884	1884						
Shale		1884	1890						
Total Depth			1890						