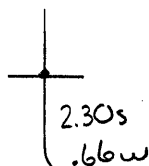


Latitude

Longitude



Topo Location

7.5' Loc. _____ 15' Loc. _____
 _____ (calc.) _____

Company EE Herdman

Farm George R Northrop #104

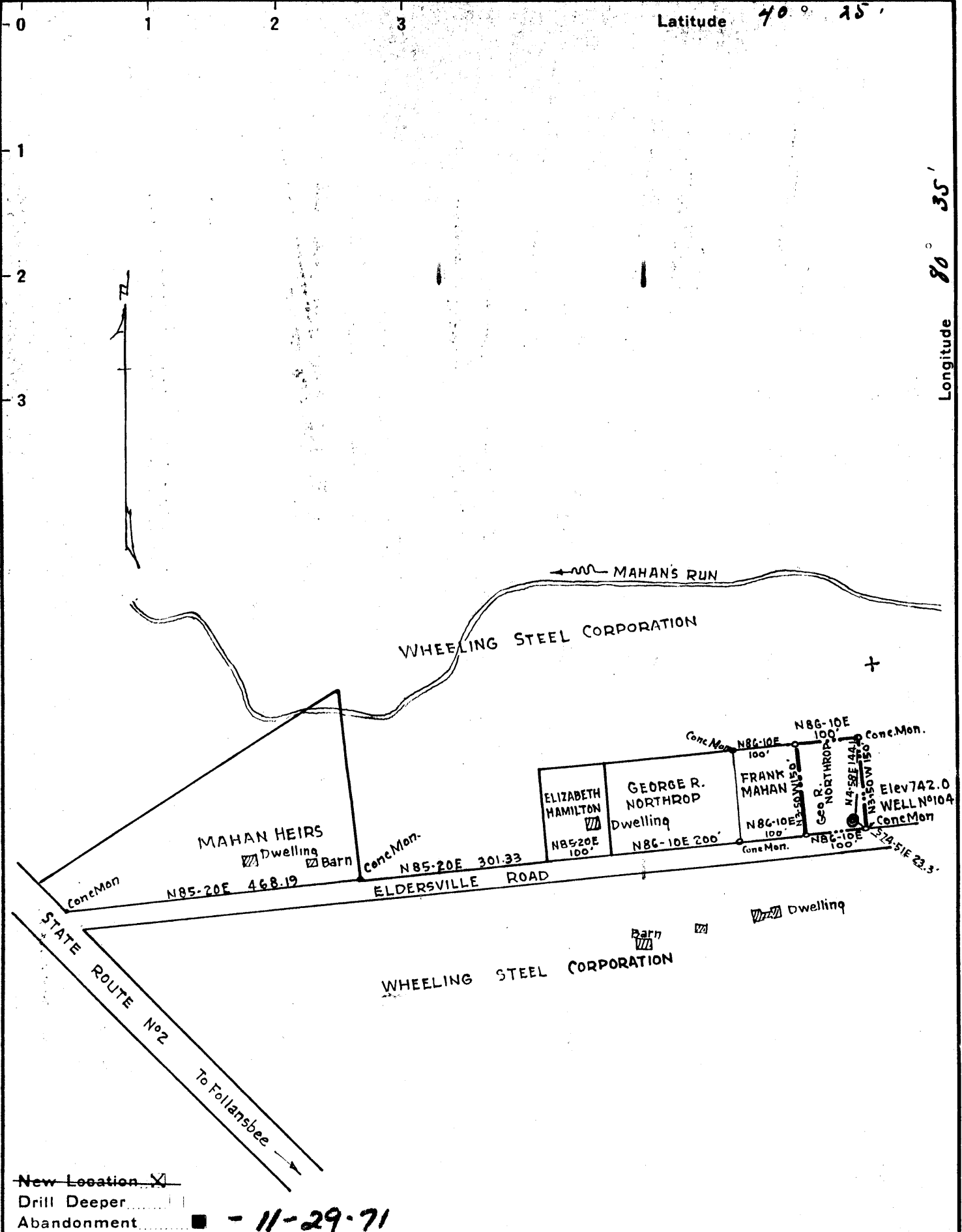
15' Quad _____
(sec.)

7.5' Quad Stewberville East

District Cross Creek

WELL LOCATION PLAT

County 009 **Permit** 19



E.E. Henthorn.
Company ~~WHEELING STEEL CORPORATION~~
Address Box 42, Sistersville, W. Va., 26175
~~General Office Wheeling, W. Va.~~
Farm GEORGE R NORTHROP (Parcel)
Tract _____ Acres 15.000 Lease No. _____
Well (Farm) No. 104 Serial No. _____
Elevation (Spirit Level) 742.0
Quadrangle STUEBENVILLE C
County BROOKE District CROSSCREEK
Engineer Eugene M. SMITH
Engineer's Registration No. 390
File No. _____ Drawing No. _____
Date June 9, 1939 Scale 1" = 200'

STATE OF WEST VIRGINIA
DEPARTMENT OF MINES
OIL AND GAS DIVISION
CHARLESTON

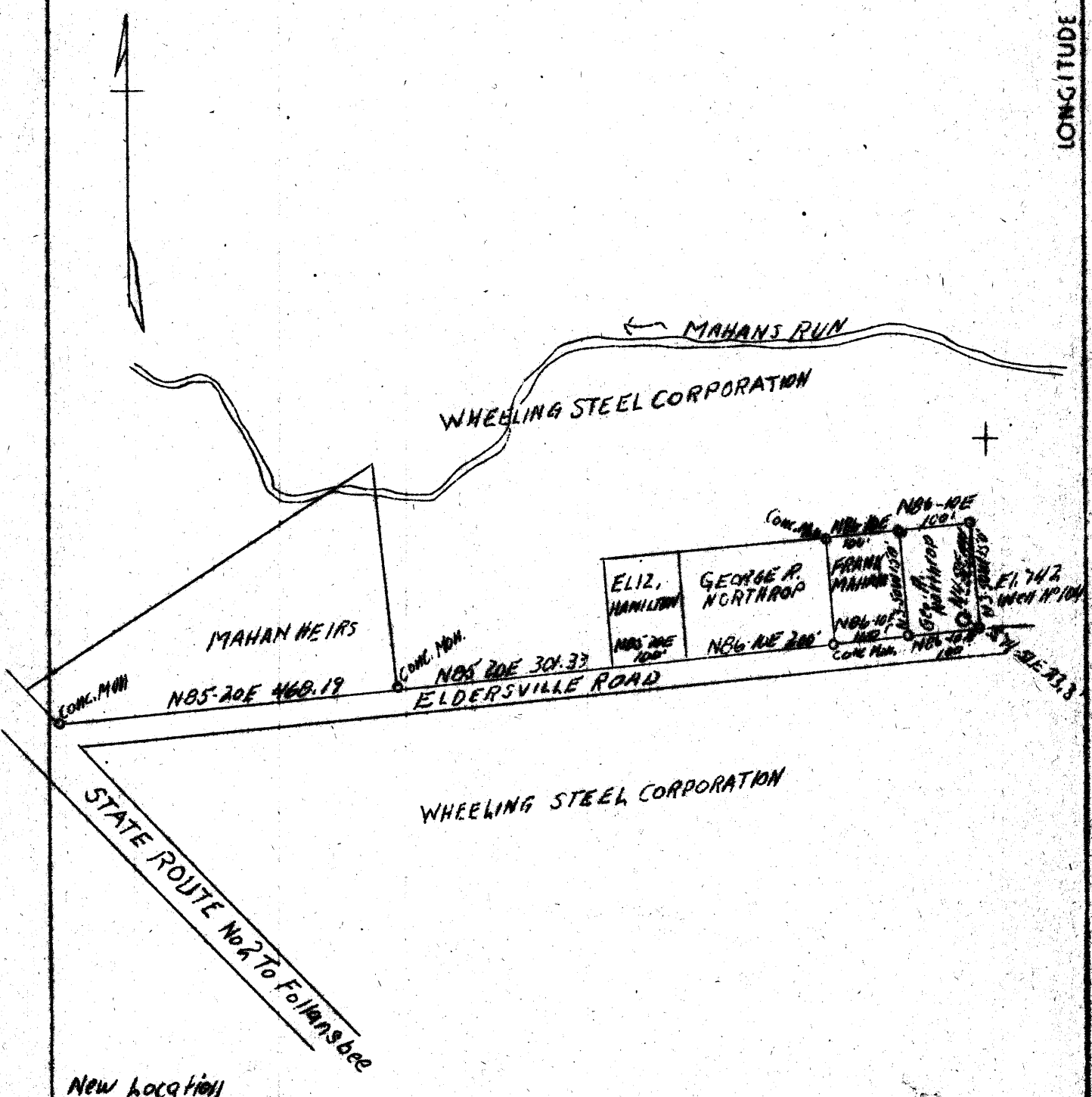
WELL LOCATION MAP
FILE NO. BRO-19-P
Plugging Cancelled 5-16-72

+ Denotes location of well on United States Topographic Maps, scale 1 to 62,500, latitude and longitude lines being represented by border lines as shown.

- Denotes one inch spaces on border line of original tracing.

LATITUDE 40° 35'

LONGITUDE 80° 35'



New location

Company	Wheeling Steel Corporation	STATE OF WEST VIRGINIA
Address	Wheeling, W. Va.	Department of Mines
Farm	George R. Northrop	OIL & GAS DIVISION
Tract	(Parcel)	Charleston
Acres	15,000	
Well (Farm) No.	104	WELL LOCATION MAP
Elevation (SL)	742.0	File No. <u>370-17</u>
Quadrangle	Staubenville	
County	Brocke	
District	Cross Creek	x Denotes location of well on U. S. Topographic Maps, scale 1 to 62,500, latitude and longitude lines being represented by border lines as shown.
Engineer	Ruggles M. Smith	- Denotes one inch spaces on border line of original tracing.
Eng. Rec. No.	390	
Date	June 9, 1939	
Scale	1" = 200'	