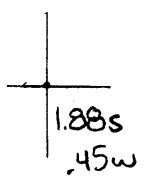


40°22'30"

Latitude

80°35'00"

Longitude



Topo Location

7.5' Loc. _____ 15' Loc. _____
 _____ (calc.) _____

Company Wheeling Steel Corp

Farm Wheeling Steel Corp #108

15' Quad _____
(sec.)

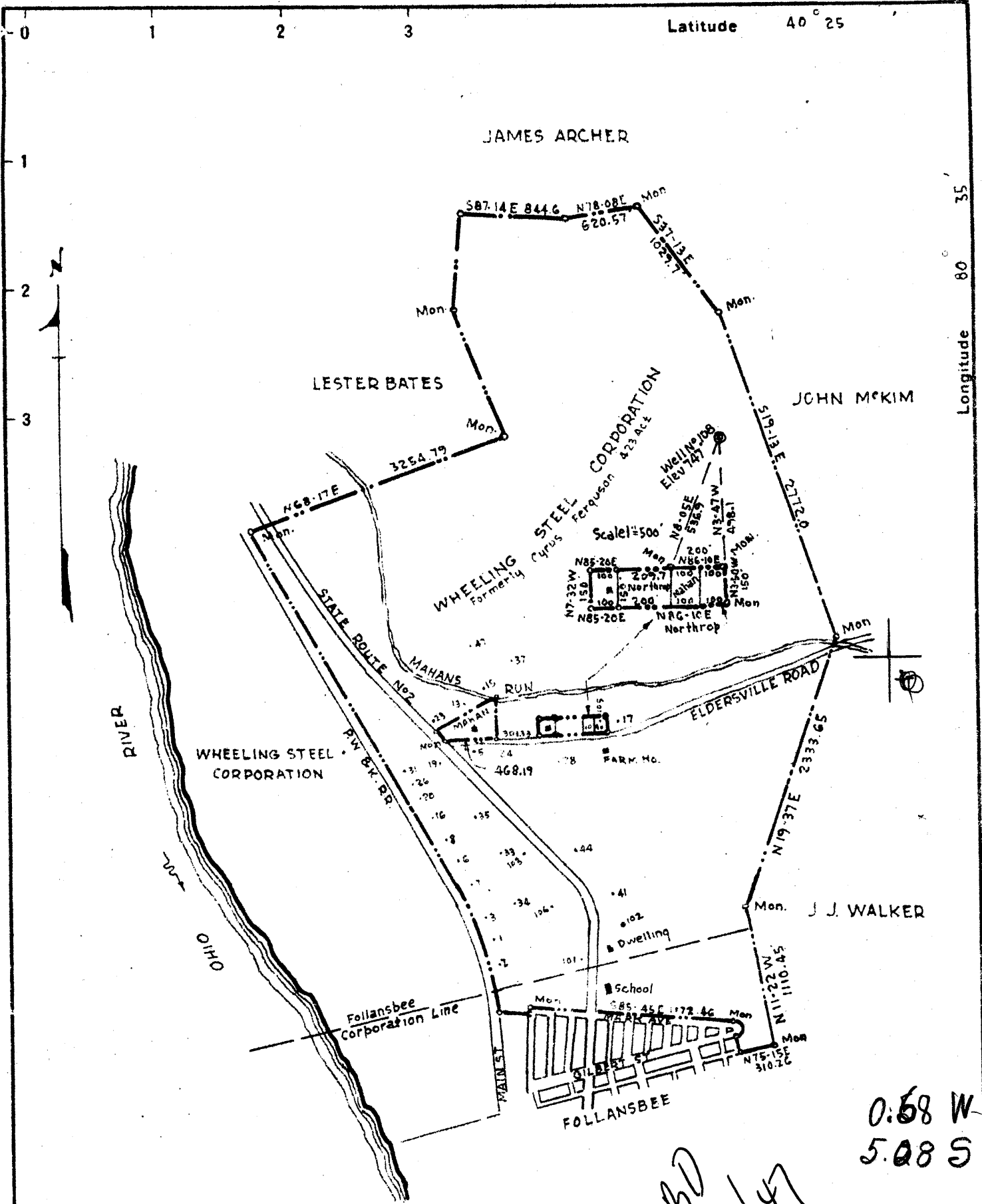
7.5' Quad Steubenville East

District Cross Creek

WELL LOCATION PLAT

County 009 **Permit** 23

W



New Location X
 Drill Deeper
 Abandonment

ABD
 12/47

0.68 W
 5.08 S

Company WHEELING STEEL CORPORATION
 Address (General Office) Wheeling, W. Va
 Farm Wheeling Steel Corporation { Formerly Cyrus Ferguson }
 Tract _____ Acres 423 Lease No. _____
 Well (Farm) No. 108 Serial No. _____
 Elevation (Spirit Level) 747.0'
 Quadrangle Steubenville
 County Brooke District Cross Creek
 Engineer Eugene M. Smith - C.C. Smith's Sons
 Engineer's Registration No. 290
 File No. _____ Drawing No. _____
 Date May 28, 1940 Scale 1" = 1000'

STATE OF WEST VIRGINIA
 DEPARTMENT OF MINES
 OIL AND GAS DIVISION
 CHARLESTON

WELL LOCATION MAP
 FILE NO. Bro-23

+ Denotes location of well on United States Topographic Maps, scale 1 to 62,500, latitude and longitude lines being represented by border lines as shown.
 - Denotes one inch spaces on border line of original tracing.

WEST VIRGINIA DEPARTMENT OF MINES
OIL & GAS DIVISION
W E L L R E C O R D

Permit No. Bro-23
Steubenville Quad.

Pressure Well

Company Wheeling Steel Corporation,
Address Wheeling, W. Va.
Farm Corporation ACRES 423
Location 1 mi. east of Ohio River
Well No. 108 ELEV. 747
District Cross Creek - Brooke County
Surface & Mineral Wheeling Steel, Corp., Wheeling, W. Va.
Commenced May 27, 1940
Completed Oct. 25, 1940
Shot Not Shot
Open Flow None
Volume None
Rock Pressure None
Oil None
Fresh Water Top to 340
Salt Water 340 to bottom

CASING & TUBING

13	83	83
8-1/4	341	341
6-5/8	986	986
Coal at: 200, 225, 298 and 356'		

Sand&Gravel	bn	s	0	100	
Shale	gr	s	100	135	
Limestone	bl	med	135	175	
Shale	bl	s	175	217	
Sand	glassy	m	217	225	
Coal	bk	s	225	228	Freeport?
Slate	bk	s	228	250	
Sand	wh	h	250	275	
Shale	gr	m	275	298	
Coal	bk	s	298	301	Freeport
Shale	gr	m	301	310	
Limestone	bl	m	310	320	
Shale	bk	m	320	341	
Shale	gr	m	341	347	Gas 349 - Cow Run Sand
Sand	lt	m	347	355	
Shale	gr	m	355	356	Gas 356 - Cow Run Sand
Coal	bk	s	356	360	Kittanning?
Shale	bl	m	360	370	
Sand	wh	m	370	400	
Limestone	lt	s	400	417	
Sand	lt	m	417	430	
Limestone	lt	h	430	436	
Sand	lt	m	436	450	
Shale	bk	m	450	458	
Shale	gr	m	458	481	
Shale	lt. gr	m	481	508	
Shale	gr	m	508	521	
Shale	bk	m	521	549	
Shale	gr	m	549	555	
Shale&Sand	mixed	h	555	570	Gas 570 - Salt Sand
Sand	lt	m	570	670	Salt Sand
Sand&Shale	mixed	m	670	685	
Limestone	bl	h	685	690	
Limestone	wh	h	690	797	Big Lime
Sand	wh	h	797	976	Big Injun
Sandy Lime	mixed	m	976	980	
Shale	bl	m	980	990	
Shale	bk	m	990	1004	
Shale	dk	gr	1004	1233	
Shale	dk	gr	1233	1269	gritty
Limestone	bk	h	1269	1275	
Limestone	gr	h	1275	1281	sandy
Shale	dk gr	m	1281	1301	gritty
Shale	bk	m	1301	1305	
Limestone	bk	h	1305	1307	
Shale	bk	m	1307	1328	
Sand	dk	h	1328	1331	Berea
Sand	lt	s	1331	1338	Berea

1328
747

-581

Well bottomed at 1338 and will be used for pressure purposes.

The lower 7' of the Berea Sand showed traces of oil and would probably make from 1 bbl. oil to 2 bbls. oil per day if vacuum were applied.

Gas in considerable quantities was found at depth points 347, 356 and 570, but was drowned out by water.

STATE OF WEST VIRGINIA
DEPARTMENT OF MINES
OIL AND GAS DIVISION

WELL RECORD

Permit No. 23

Oil or Gas Well Pressure
(Kind)

Company.....	Wheeling Steel Corporation	Casing and Tubing	Used in Drilling	Left in Well	Packers
Address.....	Wheeling, W. Va.	Size			
Farm.....	Corporation Acres 423	16.....	none		Kind of Packer... none
Location (waters).....	1 mi. east of Ohio River	13.....	53'	53'	
Well No.....	100 Elev. 747	10.....	none		Size of.....
District.....	Cross Creek County Brooke	8 1/4.....	341'	341'	
The surface of tract is owned in fee by.....	Wheeling Steel Corporation Address Wheeling, W. Va.	6 5/8.....	336'	336'	Depth set.....
Mineral rights are owned by.....	Surge	5 3/16.....	none		
Drilling commenced.....	May 27, 1940	3.....	none		Perf. top... none
Drilling completed.....	October 25, 1940	2.....	none		Perf. bottom... none
Date shot.....	not shot	Liners Used.....	none		Perf. top... none
Open Flow /10ths Water in.....	Inch				Perf. bottom... none
Volume.....	none Cu. Ft.				
Rock Pressure.....	none lbs. hrs.				
Oil.....	none bbls., 1st 24 hrs.				
Fresh water.....	top to 340 feet				
Salt water.....	340 feet to bottom				

CASING CEMENTED no SIZE no No. FT. no Date no
COAL WAS ENCOUNTERED AT 200 FEET no INCHES
225 FEET no INCHES 290 FEET no INCHES
350 FEET no INCHES no FEET no INCHES

Formation	Color	Hard or Soft	Top	Bottom	Oil Gas or Water	Depth Found	Remarks
Sand and gravel	brown	soft	top to	100'			
Shale	gray	"	100'	155'			
Limestone	blue	mod.	155'	175'			
Shale	"	soft	175'	217'			
Sand	glassy	mod.	217'	225'			
Coal	black	soft	225'	228'			Prooport ?
Slate	"	"	228'	250'			
Sand	white	hard	250'	275'			
Shale	gray	mod.	275'	298'			
Coal	black	soft	298'	301'			Prooport
Shale	gray	mod.	301'	310'			
Limestone	blue	"	310'	320'			
Shale	black	"	320'	341'			
Shale	gray	"	341'	347'	gas	349'	Cow Run Sand
Sand	light	"	347'	355'			
Shale	gray	"	355'	356'	gas	356'	Cow Run Sand
Coal	black	soft	356'	360'			Kittanning ?
Shale	blue	mod	360'	370'			
Sand	white	"	370'	400'			
Limestone	light	sandy	400'	417'			
Sand	"	mod.	417'	430'			
Limestone	"	hard	430'	436'			
Sand	"	mod.	436'	450'			
Shale	black	"	450'	458'			
Shale	gray	"	458'	481'			
Shale	lt. gray	"	481'	508'			
Shale	gray	"	508'	521'			
Shale	black	"	521'	549'			
Shale	gray	"	549'	555'			
Shale & Sand	mixed	hard	555'	570'	gas	570'	Salt Sand
Sand	light	mod	570'	670'			Salt Sand
Sand/Shale	mixed	"	670'	685'			
Limestone	blue	hard	685'	690'			
Limestone	white	"	690'	727'			Big Lino
Sand	white	"	727'	976'			Big Injun

Formation	Color	Hard or Soft	Top	Bottom	Oil, Gas or Water	Depth Found	Remarks
Sandy Lime	mixed	mod.	876'	880'			
Shale	blue	"	880'	900'			
Shale	black	"	900'	1004'			
Shale	dark grey	"	1004'	1223'			
Shale	dark grey	"	1223'	1260'			gritty
Limestone	black	hard	1269'	1278'			
Limestone	gray	hard	1275'	1281'			sandy
Shale	dark grey	mod	1281'	1301'			gritty
Shale	black	mod.	1301'	1325'			
Limestone	black	hard	1305'	1307'			
Shale	black	mod.	1307'	1329'			
Sand	dark	hard	1329'	1331'			Poros
Sand	light	soft	1331'	1333'			Poros

Well bottomed at 1333' and will be used for pressure purposes.

The lower 7' of the Poros sand showed traces of oil and would probably make from 1 bbl. oil to 2 bbls. oil per day if vacuum were applied.

Gas in considerable quantities was found at depth points 847', 886' and 870', but was drowned out by water.

OTHER DATA:-

APPROXIMATE COST OF WELL

Driller & Helper	1,450.00
Casing & Miscellaneous Labor	322.62
Teaming & Trucking	54.00
Repairs to Drilling Machine	281.97
Drilling & Fishing Tools	117.75
Engineering & Supervision	100.00
12 1/2" Casing - 83 ft. @ \$1.50	124.50
8 1/2" Casing 341 ft. @ .75	255.75
6-5/8" " 986 ft. @ .45	443.70
1 - 6-5/8" Anchor Packer	50.00

TOTAL COST OF WELL #108

\$ 3,200.29

DELAYS

Testing gas - June 11, to July 1st, inclusive.
 Testing gas - July 10, to Sept. 4th, inclusive.
 Drilling machine (Timing Gears) 3 days.
 " " (Valve Stem) 2 days.
 " " (Clutch) 2 days.
 " " (Drilling Stem) 2 days.

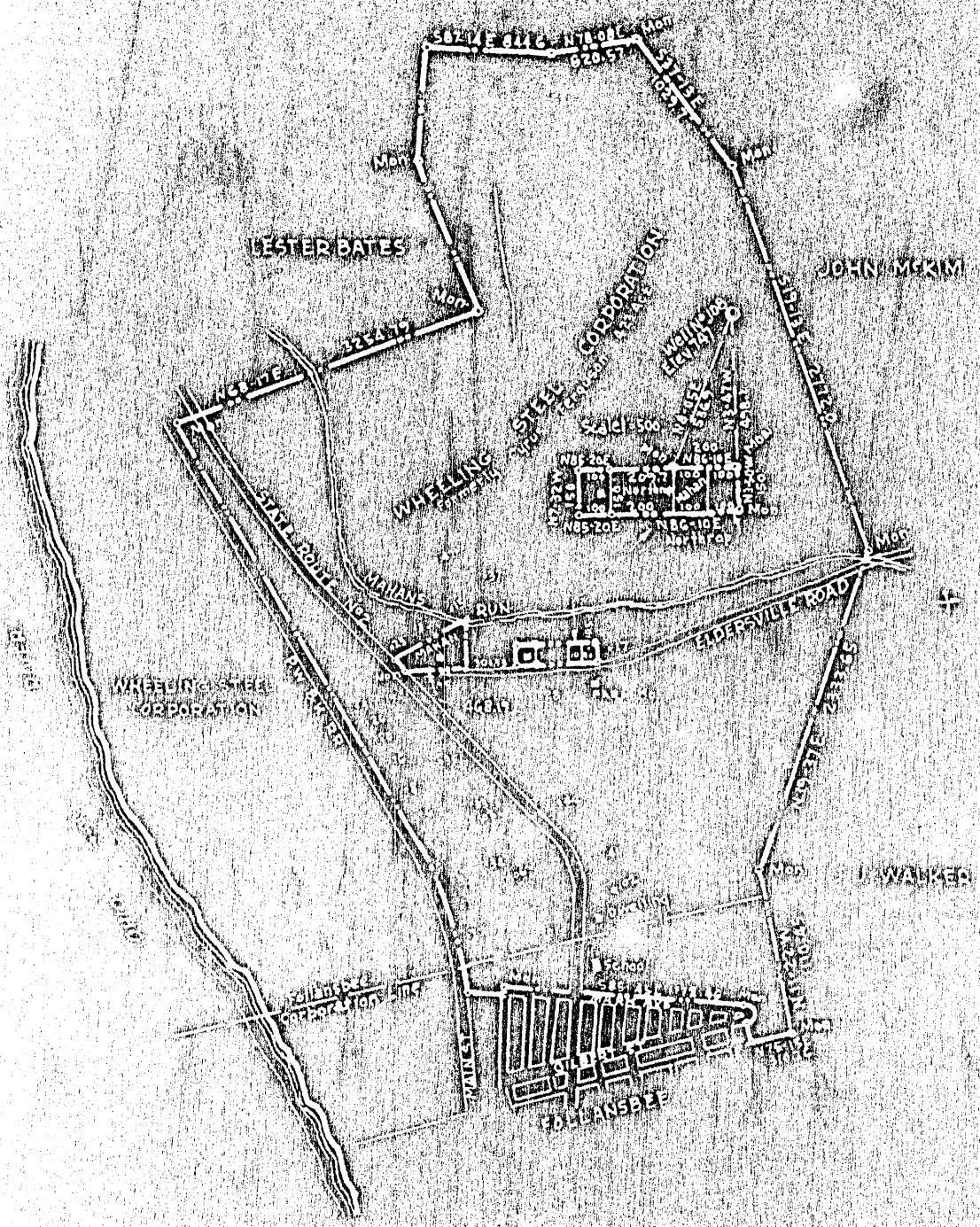
Date November 5, 1940

APPROVED Wheeling Steel Corp. Owner

By _____ Supt. (Title)

Latitude 40 13

JAMES ARCHER



Longitude 80 13

WELL LOCATION & OWNERSHIP INFORMATION

Company	WHEELING STEEL CORPORATION
Address	(General Office) Wheeling, W.Va.
City	Wheeling, West Virginia
State	West Virginia
Well Name	103
Location	Subsidiary
County	Putnam
Section	103
Range	103
Meridian	103
Original No.	103
Original	103
Scale	103

STATE OF WEST VIRGINIA
DEPARTMENT OF MINES
OIL AND GAS DIVISION
CHARLESTON

WELL LOCATION MAP
FILE NO.

+ Denotes location of well on United States Topographic Map, scale 1:62,500. Latitude and longitude lines are represented by border lines of map.

- Denotes other wells on border map of original location.