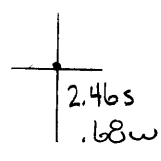


40° 22' 30"

Latitude

80° 35' 00"

Longitude



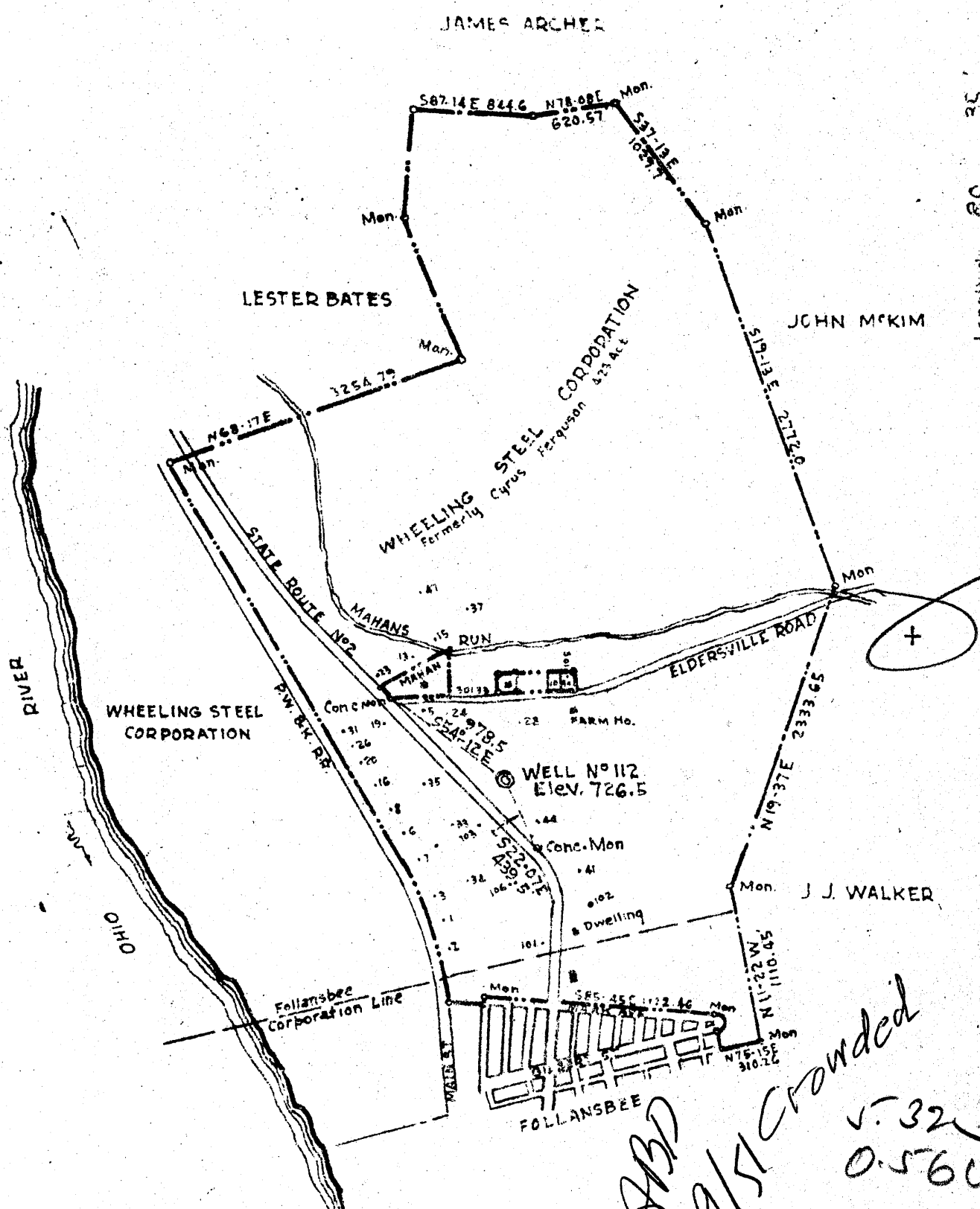
**Topo Location**

7.5' Loc. \_\_\_\_\_ 15' Loc. \_\_\_\_\_  
 \_\_\_\_\_ (calc.) \_\_\_\_\_

**Company** Wheeling Steel Corp  
**Farm** Wheeling Steel Corp #112  
**15' Quad** \_\_\_\_\_  
 (sec.)  
**7.5' Quad** Steubenville East  
**District** Cross Creek

**WELL LOCATION PLAT**

**County** 009 **Permit** 28



New Location   
 Drill Deeper   
 Abandonment

Company	WHEELING STEEL CORPORATION		
Address	(General Office) Wheeling, W. Va		
Farm	Wheeling Steel Corporation	{ Formerly Cyrus Fergusson }	
Tract	Acres 423	Lease No.	
Well (Farm) No.	112	Serial No.	
Elevation (Spirit Level)	726.5		
Quadrangle	Steubenville		
County	Brooke	District Cross Creek	
Engineer	Eugene M. Smith - C.C. Smith's Sons		
Engineer's Registration No.	290		
File No.	Drawing No.		
Date	Jan 9, 1942	Scale 1" = 1000'	

STATE OF WEST VIRGINIA  
 DEPARTMENT OF MINES  
 OIL AND GAS DIVISION  
 CHARLESTON

WELL LOCATION MAP  
 FILE NO. BRO-28

+ Denotes location of well on United States Topographic Maps, scale 1 to 62,500, latitude and longitude lines being represented by border lines as shown.

- Denotes one inch spaces on border line of original tracing.

WEST VIRGINIA DEPARTMENT OF MINES  
OIL & GAS DIVISION  
W E L L R E C O R D

Permit No. Bro-28

Company	Wheeling Steel Corp.	Oil Well		
Address	Wheeling, W.Va.	CASING & TUBING		
Farm	Corperation Acres 423	10	90	90
Location	1/2 miles East of Ohio River	8 1/2	250	250
Well No	112	6 5/8	650	650
District	Elev. 726.5'	5 3/16	975	975
Surface	Cross Creek			
Mineral	Brooke County			
Commenced	Wheeling Steel Corp. Wheeling, W.Va.			
Completed	Same	Wall Packer		
Shot	May 27, 1942	Size-5 3/16 x 6 5/8		
Flow	June 24, 1942	Depth 975'-980'		
Oil	June 25, 1942	Depth 1326'		
Fresh Water	No Record	Coal at 250' to 255'		
Salt Water	No Record (Est. Prod. 5 bbls. per day)			
	110'			
	400'			
	960'			

Sand & Gravel	Br	S	0	100	
Mud	Wh	S	100	110	
Sand	Br	S	110	135	
Shale	Bk	M	135	240	
Sand	Gr	M	240	250	
Coal	Bk	M	250	255-	Upper Freeport
Mud	Wh	S	255	260	
Shale	Bk	M	260	295	
Limestone	Gr	H	295	305	
Shale	Bk	M	305	355	
Sand	Lt	M	355	450	
Shale	Gr	M	450	560	
Sand	Lt	M	560	630-	Salt Sand
Slate	Dk	H	630	665	
Limestone	Lt	H	665	805	-Big Lime
Sand	Br	M	805	960	-Big Injun
Slate & Shells	Dk	M	960	1230	
Sand	Lt	M	1230	1260	
Slate	Gr	M	1260	1300	
Slate	Bk	H	1300	1311	
Sand	Lt	M	1311	1332-	Berea
Slate	Dk	M	1332	1336	

Well bottomed at 1336'

Estimated production of oil from this well---5 barrels per day.