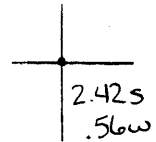


40°22'30"

Latitude

80°35'00"

Longitude



**Topo Location**

7.5' Loc. \_\_\_\_\_ 15' Loc. \_\_\_\_\_  
 \_\_\_\_\_ (calc.) \_\_\_\_\_

**Company** Wheeling Steel Corp

**Farm** Wheeling Steel Corp #42

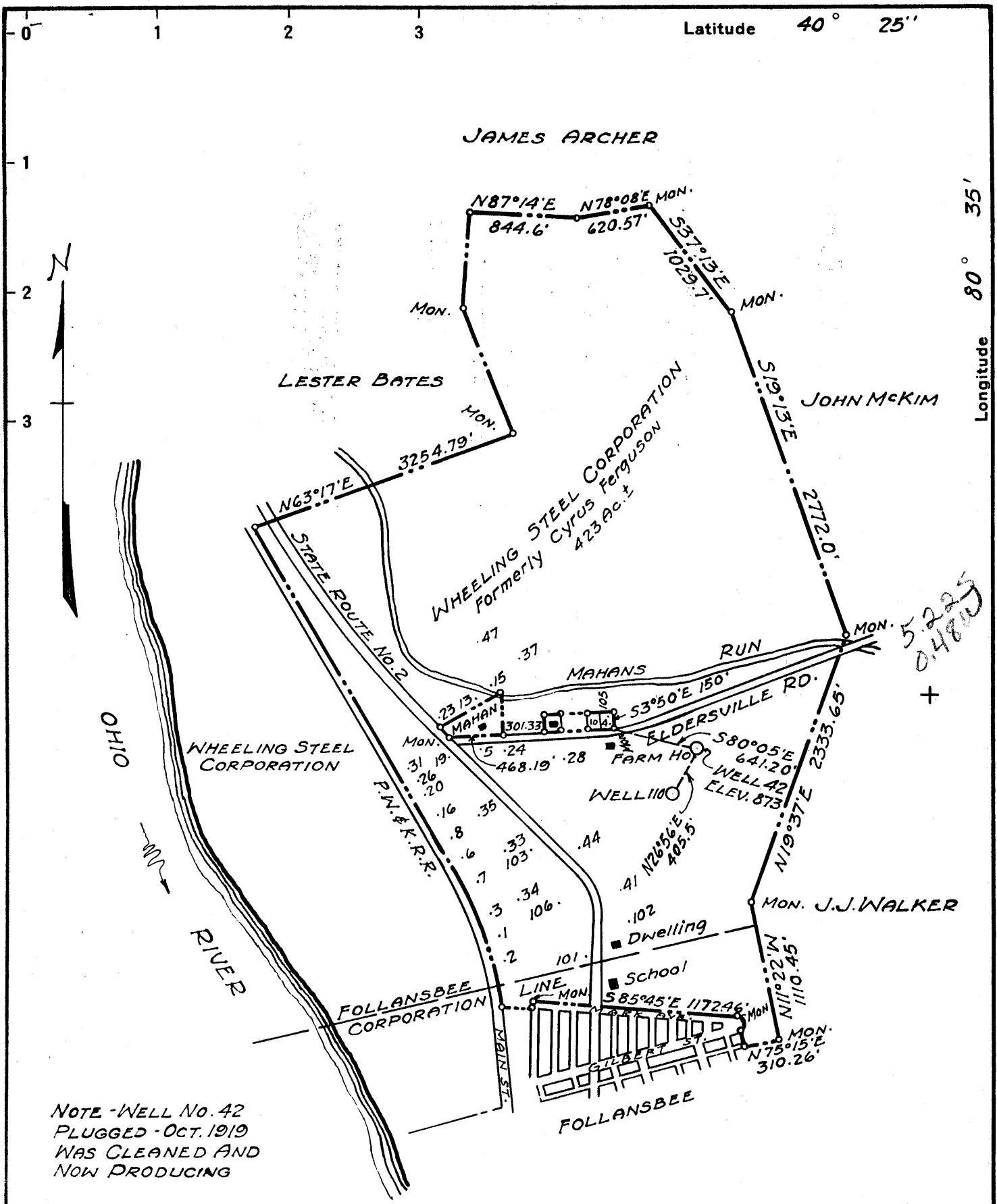
**15' Quad** \_\_\_\_\_  
(sec.)

**7.5' Quad** Steubenville East

**District** Cross Creek

**WELL LOCATION PLAT**

**County** 009 **Permit** 35



NOTE - WELL No. 42  
PLUGGED - OCT. 1919  
WAS CLEANED AND  
NOW PRODUCING

~~New Location~~   
Drill Deeper   
Abandonment  - 11-29-71

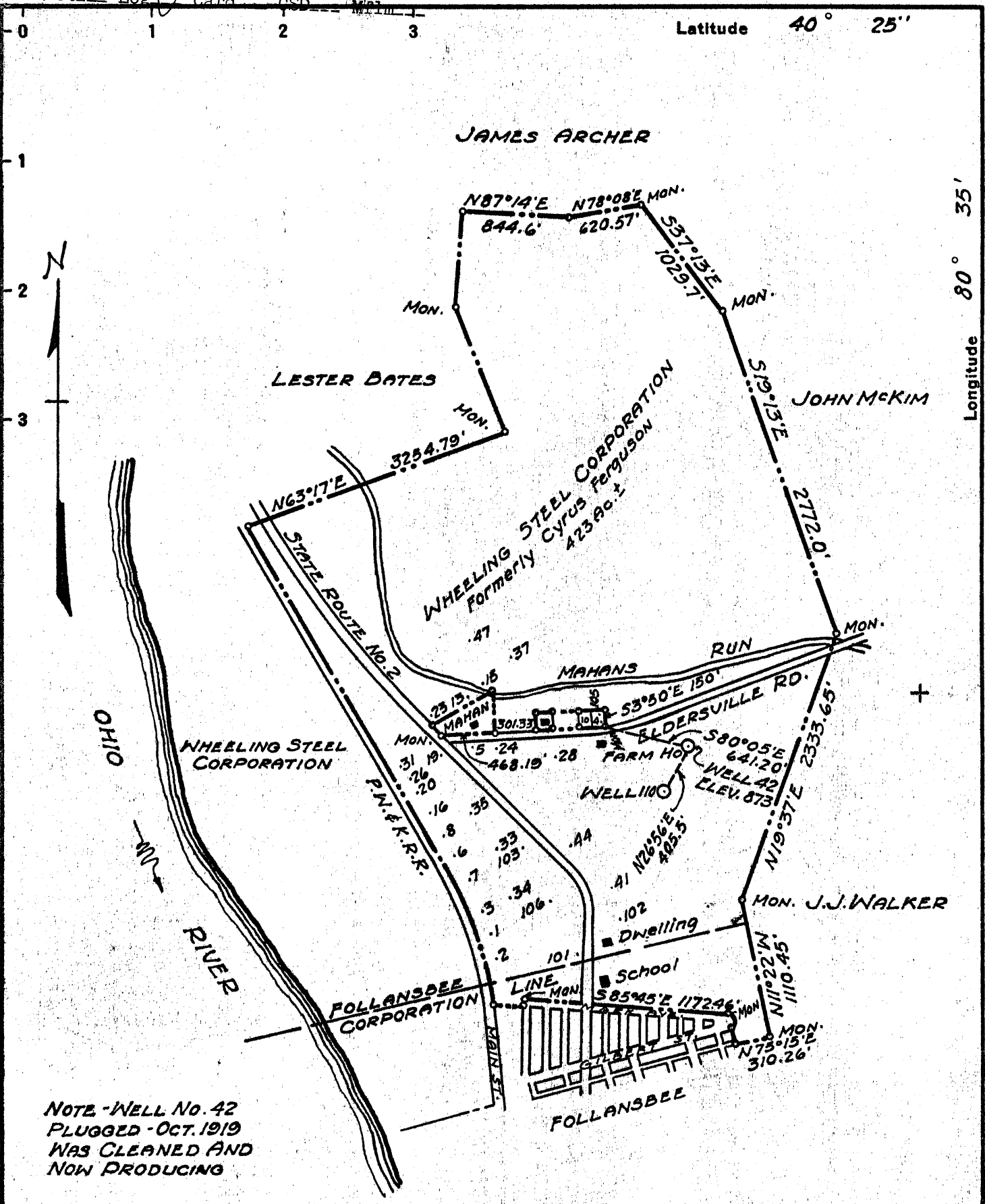
**E. E. Henthorn**  
 Company ~~WHEELING STEEL CORPORATION~~  
 Address ~~Box 42 Sistersville, W. Va., 26175~~  
 (GENERAL OFFICE) WHEELING, W. VA.  
 Farm ~~WHEELING STEEL CORPORATION~~ (Formerly Cyrus Ferguson)  
 Tract \_\_\_\_\_ Acres 423 Lease No. \_\_\_\_\_  
 Well (Farm) No. 42 Serial No. \_\_\_\_\_  
 Elevation (Spirit Level) 873  
 Quadrangle STEBENVILLE  
 County BROOKE District CROSS CREEK  
 Engineer SIDNEY C. SMITH - C. C. SMITH'S SONS  
 Engineer's Registration No. 240  
 File No. \_\_\_\_\_ Drawing No. \_\_\_\_\_  
 Date APRIL 10, 1944 Scale 1" = 1000'

STATE OF WEST VIRGINIA  
 DEPARTMENT OF MINES  
 OIL AND GAS DIVISION  
 CHARLESTON

**WELL LOCATION MAP**  
 FILE NO. BRO-35-P  
Plugging Permit Cancelled - 5-16-72

+ Denotes location of well on United States Topographic Maps, scale 1 to 62,500, latitude and longitude lines being represented by border lines as shown.

- Denotes one inch spaces on border line of original tracing.



Longitude 80° 35'

NOTE - WELL No. 42  
PLUGGED - OCT. 1919  
WAS CLEANED AND  
NOW PRODUCING

New Location   
Drill Deeper   
Abandonment  - 11-29-71

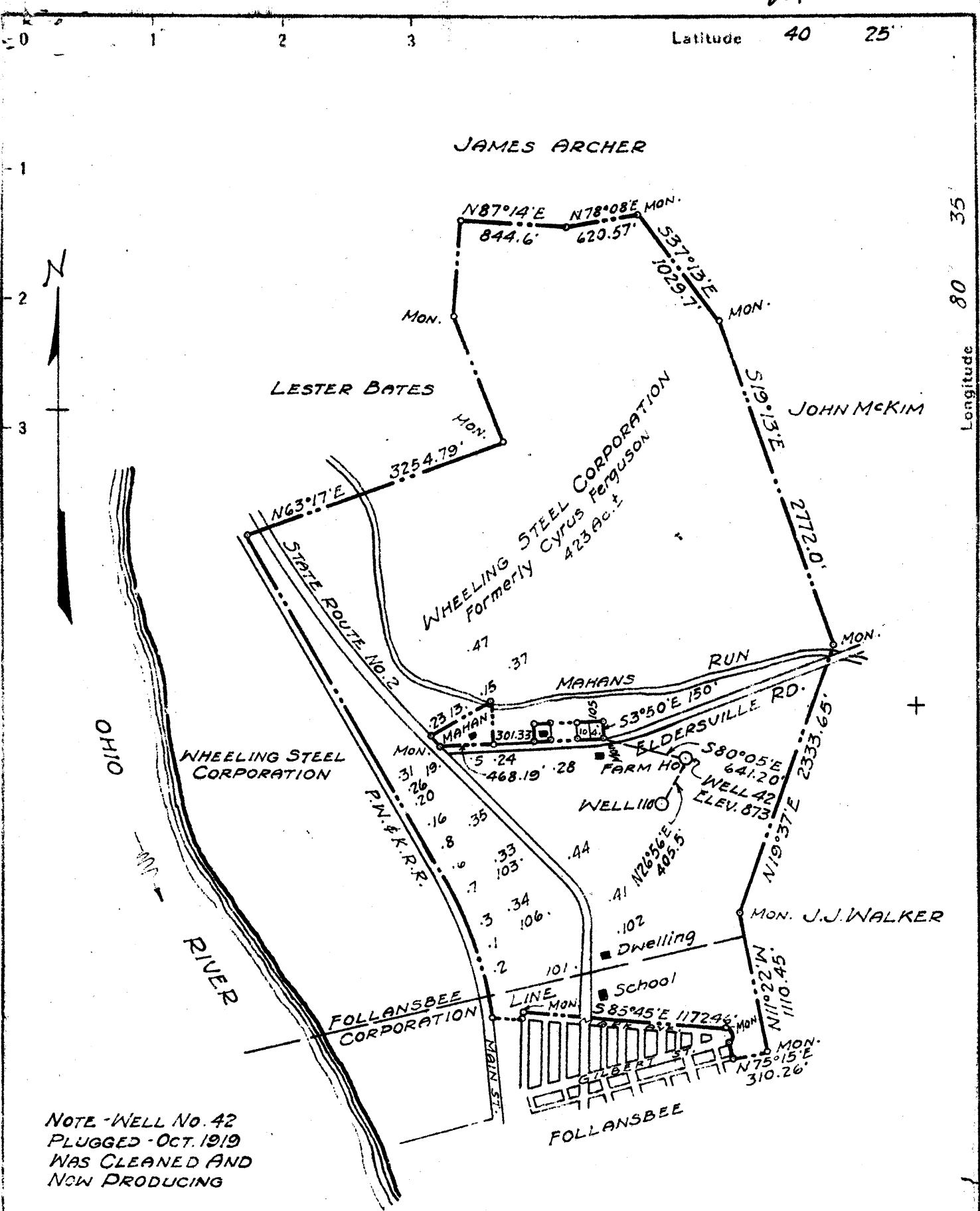
E. F. Henthorn  
Company WHEELING STEEL CORPORATION  
Address BOX 42 SISTERSVILLE, W. VA. 26175  
(GENERAL OFFICE) WHEELING, W. VA.  
Farm WHEELING STEEL CORPORATION (Formerly Cyrus Ferguson)  
Tract \_\_\_\_\_ Acres 423 Lease No. \_\_\_\_\_  
Well (Farm) No. 42 Serial No. \_\_\_\_\_  
Elevation (Spirit Level) 873  
Quadrangle STEBENVILLE   
County BROOKE District CROSS CREEK  
Engineer SIDNEY C. SMITH - C. C. SMITH'S SONS  
Engineer's Registration No. 240  
File No. \_\_\_\_\_ Drawing No. \_\_\_\_\_  
Date APRIL 10, 1944 Scale 1" = 1000'

STATE OF WEST VIRGINIA  
DEPARTMENT OF MINES  
OIL AND GAS DIVISION  
CHARLESTON

WELL LOCATION MAP  
FILE NO. BRO-35-P

+ Denotes location of well on United States Topographic Maps, scale 1 to 62,500, latitude and longitude lines being represented by border lines as shown.

- Denotes one inch spaces on border line of original tracing.



NOTE - WELL NO. 42  
PLUGGED - OCT. 1919  
WAS CLEANED AND  
NOW PRODUCING

New Location  
Drill Deeper  
Abandonment

Company	WHEELING STEEL CORPORATION	
Address	(GENERAL OFFICE) WHEELING, W. VA.	
Farm	WHEELING STEEL CORPORATION (Formerly Cyrus Ferguson)	
Tract	Acres 423	Lease No.
Well (Farm) No.	42	Serial No.
Elevation (Spirit Level)	873	
Quadrangle	STEBENVILLE	
County	BROOKE	District CROSS CREEK
Engineer	SIDNEY C. SMITH - C. C. SMITH'S SONS	
Engineer's Registration No.	240	
File No.	Drawing No.	
Date	APRIL 10, 1944	Scale 1" = 1000'

STATE OF WEST VIRGINIA  
DEPARTMENT OF MINES  
OIL AND GAS DIVISION  
CHARLESTON

WELL LOCATION MAP  
FILE NO. BRO-35

+ Denotes location of well on United States Topographic Maps, scale 1 to 62,500, latitude and longitude lines being represented by border lines as shown.  
- Denotes one inch spaces on border line of original tracing

