

40°22'30"

Latitude

80°35'00"

Longitude



**Topo Location**

7.5' Loc. \_\_\_\_\_ 15' Loc. \_\_\_\_\_  
 \_\_\_\_\_ (calc.) \_\_\_\_\_

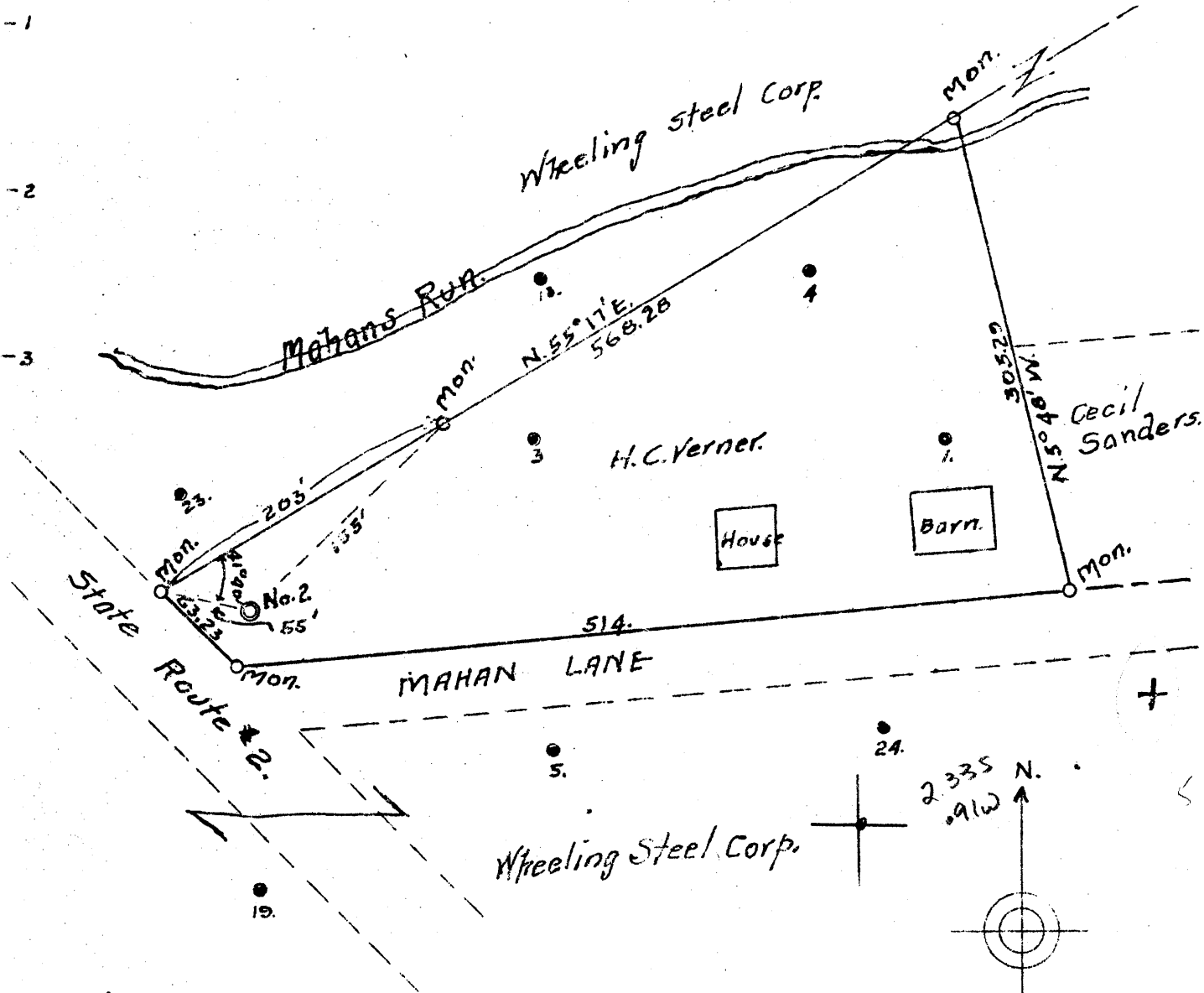
Company H C Vermer  
 Farm H C Vermer # 2  
 15' Quad \_\_\_\_\_  
 (sec.)  
 7.5' Quad Steubenville East  
 District Cross Creek

**WELL LOCATION PLAT**

County 009 Permit 38

Latitude 40° 25'  
40 22 30"

Longitude 80° 35'



**NOTE.**

All wells shown hereon drilled by and abandoned by Wheeling Steel Corporation.

All monuments are concrete with bronze plate = Whg. Steel Corp.

ABD  
5/54  
Crowded

**○ No. 2 Re-Open.**

Company	H.C. VERNER	
	E. COLLANSBEE, VVYe	
Form	H.C. VERNER (Formerly Wheeling Steel Corporation)	
Tract	Acres 2	Lease No.
Well	No. 2	Serial No.
Elevation	723.	
Road angle	Steubenville, / Steubenville E	
County	Brooke.	District Cross Creek.
Engineer	P.H. Harris	
Engineers Registration No.	2125, Ohio	
File No.	Drawing No.	
Date	5-2-44	Scale 1" = 100'

STATE OF WEST VIRGINIA  
DEPARTMENT OF MINES  
OIL AND GAS DIVISION  
CHARLESTON

WELL LOCATION MAP  
FILE NO B60-38

+ Denotes location of well on United States Topographic Maps, scale 1 to 62,500 Latitude and longitude being represented by border lines as shown.

- Denotes one inch spaces on border line of original tracing.