

40°22'30"

Latitude

80°35'00"

Longitude

2.38s
.47w

Topo Location

7.5' Loc. _____ 15' Loc. _____
 _____ (calc.) _____

Company Wheeling Steel Corp

Farm Wheeling Steel Corp #115

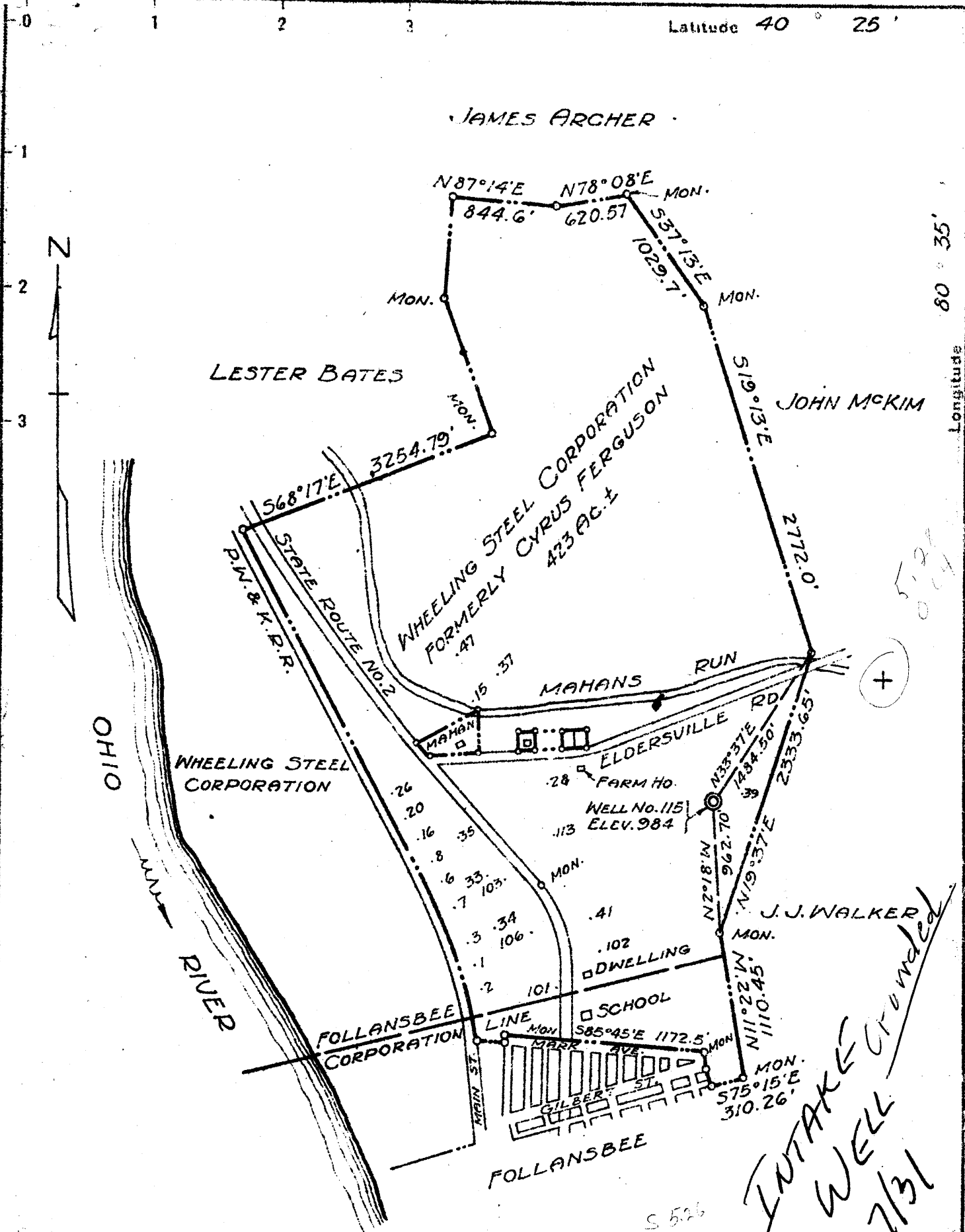
15' Quad _____
(sec.)

7.5' Quad Steubenville East

District Gross Creek

WELL LOCATION PLAT

County 009 Permit 40



New Location
 Drill Deeper
 Abandonment

Company WHEELING STEEL CORPORATION
 Address (GENERAL OFFICE) WHEELING, W.V.A
 Farm WHEELING STEEL CORPORATION (FORMERLY CYRUS FERGUSON)
 Tract _____ Acres 423± Lease No. _____
 Well (Farm) No. 115 Serial No. _____
 Elevation (Spirit Level) 984
 Quadrangle STEBENVILLE
 County BROOKE District CROSS CREEK
 Engineer SIDNEY C. SMITH - C.C. SMITH'S SONS
 Engineer's Registration No. 240
 File No. _____ Drawing No. _____
 Date Aug 28, 1945 Scale 1" = 1000'

STATE OF WEST VIRGINIA
 DEPARTMENT OF MINES
 OIL AND GAS DIVISION
 CHARLESTON

WELL LOCATION MAP
 FILE NO. B.R.C. 40

+ Denotes location of well on United States Topographic Maps, scale 1 to 62,500, latitude and longitude lines being represented by border lines as shown.

- Denotes one inch spaces on border line of original tracing

INTAKE WELL 7/31

*S 526
W 0.55'*

(+)

*5.29
0.14*

WEST VIRGINIA DEPARTMENT OF MINES
OIL & GAS DIVISION
W E L L R E C O R D

Permit No. Bro 40		Intake Well
Steubenville Quad.		CASING & TUBING
Company	Wheeling Steel Corporation	
Address	Wheeling, W.Va.	13 15 15
Farm	Corporation Acres 423	10 190 190
Location	1 Mile E. of Ohio River	8 $\frac{1}{2}$ 882 882
Well No.	115 Elev. 984	6 5/8 1214 1214
District	Cross Creek Brooke County	
Surface	Wheeling Steel Corporation	No liners
	Wheeling, W.Va.	
Mineral	Same	No Packer
Commenced	Sept. 20, 1945	
Completed	Dec. 12, 1945	Casing not cemented
Not shot		
Volume	No record	Coal at 498' 24"
Oil	Trace	547' 48"; 623' 48"
Fresh Water	50 and at 70	
Salt Water	at 627 and 815	

Sand & Gravel	Br	S	0	16	
Limestone	Wh	H	16	90	
Sand	Br	S	90	130	
Red Rock	R	H	130	140	
Shale	Gr	M	140	190	
Limestone	Wh	H	190	205	
Slate	Bk	M	205	235	
Red Rock		H	235	250	
Sand, broken	Lt	M	250	270	
Slate	Bk	M	270	306	
Red Rock	R	H	306	317	
Shale	Bk	M	317	350	
Limestone	Wh	H	350	360	
Slate	Bk	M	360	390	
Limestone	Wh	H	390	405	
Slate & Shells	Dk	M	405	498	
Coal, Upper Free.	Bk	M	498	500	
Sand, Cow Run	Lt	S	500	520	
Slate	Br	M	520	547	
Coal, L. Freeport	Bk	S	547	551	
Limestone	Wh	H	551	570	
Slate	Bk	H	570	623	
Coal, Kittanning	Bk	S	623	627	Gas
Sand	Lt	S	627	680	
Shale	Bk	M	680	700	
Sand	Lt	S	700	735	
Shale	Bk	M	735	815	
Sand, Salt	Lt	M	815	877	
Slate & Shells	Bk	M	877	930	
Limestone	Wh	H	930	1025	
Slate	Bk	M	1025	1080	
Big Injun	Lt	M	1080	1215	
Shale, Lime & Shells	Dk	M	1215	1561	
Berea Sand	Lt	S	1561	1584	
Slate	Bk	S	1584	1586	

Well bottomed at 1580 and will be used for gas intake purposes (pressure well)