

40°22'30"

Latitude

80°35'00"

Longitude

2.435
.99w

Topo Location

7.5' Loc. _____ 15' Loc. _____
 _____ (calc.) _____

Company Wheeling Steel Corp

Farm Wheeling Steel Corp #26

15' Quad _____
(sec.)

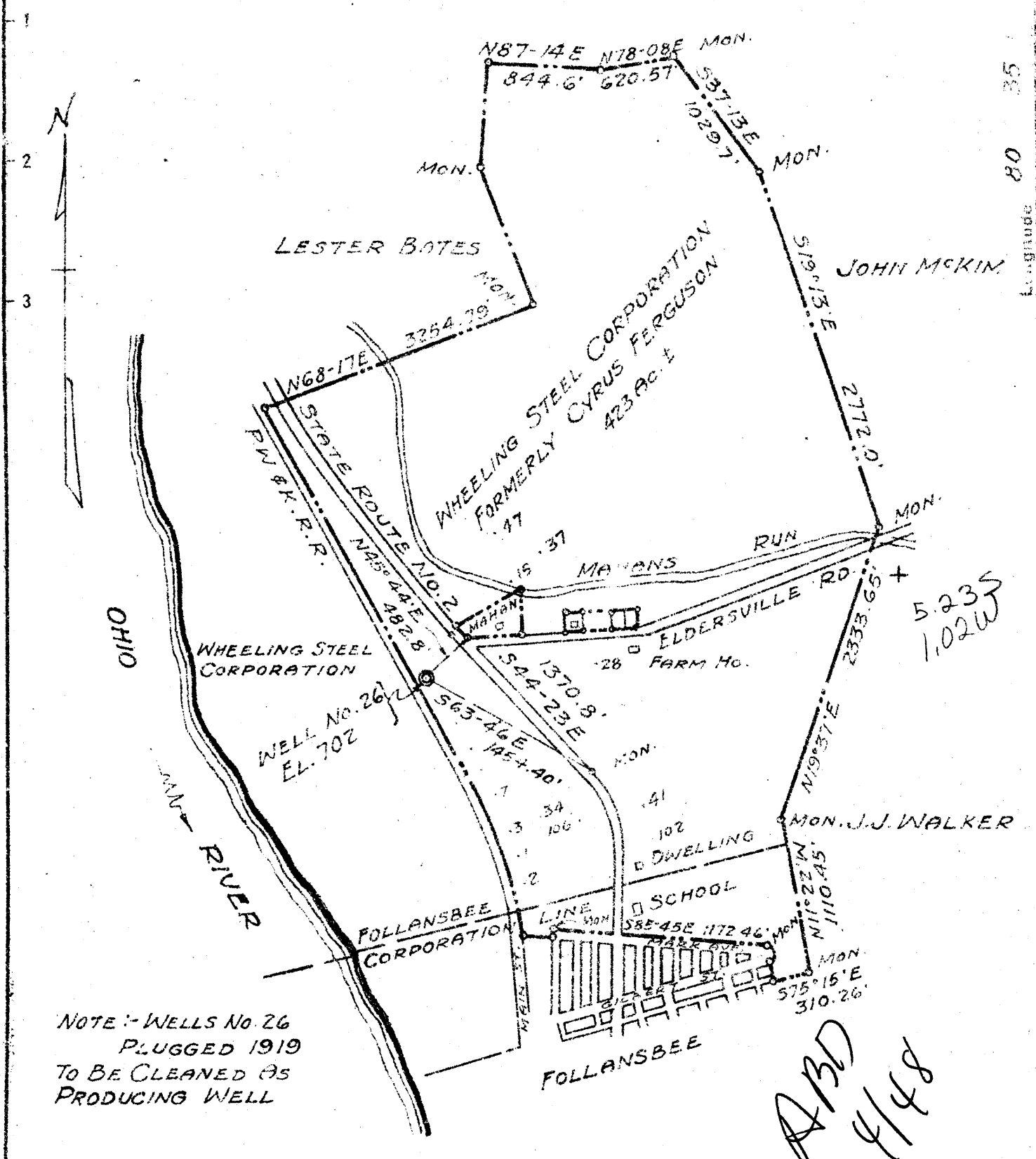
7.5' Quad Steubenville East

District Cross Creek

WELL LOCATION PLAT

County 009 Permit 42

JAMES ARCHER



NOTE :- WELLS No 26
PLUGGED 1919
TO BE CLEANED AS
PRODUCING WELL

New Location
Drill Deeper
Abandonment

Company WHEELING STEEL CORPORATION
 Address (GENERAL OFFICE) WHEELING, W. VA.
 Farm WHEELING STEEL CORPORATION FORMERLY CYRUS FERGUSON
 Tract _____ Acres 423 1/2 Lease No. _____
 Well (Farm) No. 26 Serial No. _____
 Elevation Spirit Level 702
 Quadrangle STUEBENVILLE
 County BROOKE District CROSS CREEK
 Engineer EDNEY C. SMITH - C.C. SMITH'S SONS
 Engineer's Registration No. 240
 File No. _____ Drawing No. _____
 Date MAY 31, 1945 Scale 1" = 1000'

STATE OF WEST VIRGINIA
DEPARTMENT OF MINES
OIL AND GAS DIVISION
CHARLESTON

WELL LOCATION MAP
FILE NO. BRO-42

+ Denotes location of well on United States Topographic Maps, scale 1 to 62,500. Latitude and longitude lines being represented by border lines as shown.

- Denotes one inch spaces on border line of original tracing.

WEST VIRGINIA DEPARTMENT OF MINES
OIL & GAS DIVISION
W E L L R E C O R D

ABD

Permit No. Bro 42				
Steubenville Quad.				Oil Well
Company	Wheeling Steel Corporation			CASING & TUBING
Address	Wheeling, W.Va.	16	62	62
Farm	Corporation Acres 423	13	107	107
Location	1/2 mile east of Ohio River	8½	655	655
Well No.	26 Elev. 702'	6 5/8	952	952
District	Cross Creek Brooke County	2	1312	1312
Surface	Wheeling Steel Corporation Wheeling, W.Va.			No liners used
Mineral	Same			
Commenced	January 19, 1946			Bottom Hole Packer
Completed	March 14, 1946			Size 6 5/8 x 8½
Not shot				Depth 952'
Volume	No record-small			
Oil	Ten bbls. 1st 24 hrs.			No perf. top or bottom
Water	No record			No record of coal

DRILLED DEEPER

This is an old well, first drilled in 1909 and plugged in January 1919.

No drilling log or other record is available as to formation, production, etc.

While no trouble was experienced in cleaning the well out at this time, there was every evidence that same had been carefully plugged. Very little gas present in this well, but an oil production of around 10 bbls. per day is indicated by a ten day test.

Total depth of well is 1316' with Berea sand, the producing sand, at 1292' to 1314'