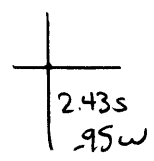


40°22'30"

Latitude

80°35'00"

Longitude



**Topo Location**

7.5' Loc. \_\_\_\_\_ 15' Loc. \_\_\_\_\_  
 \_\_\_\_\_ (calc.) \_\_\_\_\_

Company Wheeling Steel Corp

Farm Wheeling Steel Corp # 116

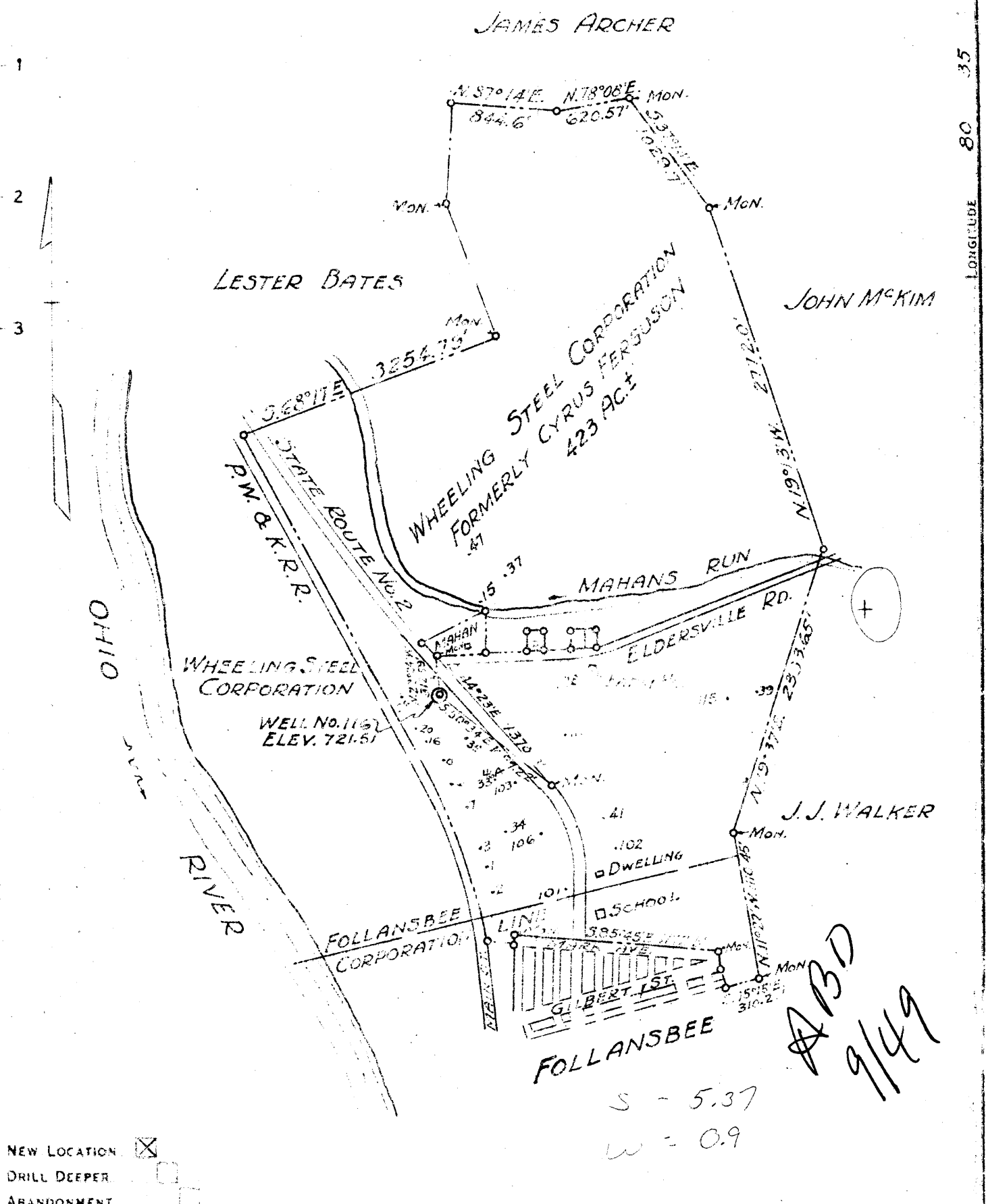
15' Quad \_\_\_\_\_  
(sec.)

7.5' Quad Steubenville East

District Cross Creek

**WELL LOCATION PLAT**

County 009 Permit 46



NEW LOCATION   
 DRILL DEEPER   
 ABANDONMENT

COMPANY **WHEELING STEEL CORPORATION**  
 ADDRESS **(GENERAL OFFICE) WHEELING, W. VA.**  
 (FORMERLY WHEELING STEEL CORPORATION CYRUS FERGUSON)  
 ACRES **423.5** LEASE NO.  
 WELL NO. **116** SERIAL NO.  
 ELEV. **721.5**  
 TOWN **STEBENVILLE**  
 COUNTY **BROOKE** DISTRICT **CROSS CREEK**  
 ENGINEER **SIDNEY C. SMITH - C.C. SMITH'S SONS**  
 ENGINEER'S REGISTRATION NO. **240**  
 FILE NO. DRAWING NO.  
 DATE **Nov. 12, 1946** SCALE **1" = 1000'**

STATE OF WEST VIRGINIA  
 DEPARTMENT OF MINES  
 OIL AND GAS DIVISION  
 CHARLESTON

**WELL LOCATION MAP**  
 FILE NO. **BRO-46**

⊕ DENOTES LOCATION OF WELL ON UNITED STATES TOPOGRAPHIC MAPS SCALE 1 TO 62 500. LATITUDE AND LONGITUDE LINES BEING REPRESENTED BY BORDER LINES AS SHOWN

1" DENOTES ONE INCH SPACES ON BORDER LINE OF ORIGINAL TRACING

*ABD*  
*9/49*

WEST VIRGINIA DEPARTMENT OF MINES  
OIL & GAS DIVISION  
W E L L R E C O R D

Permit No. Bro 46		Oil Well
Steubenville Quad.		CASING & TUBING
Company	Wheeling Steel Corporation	
Address	Wheeling, W.Va.	10 56 56
Farm	Corporation Acres 423	8½ 870 670
Location	¾ of mile east of Ohio River	6 5/8 966 966
Well No.	116 Elev. 721.5	2 1328
District	Cross Creek Brooke County	
Surface	Wheeling Steel Corporation Wheeling, W.Va.	No liners
Mineral	Same	B.H. Packer
Commenced	Nov. 14, 1946	Size 6 5/8
Completed	Jan. 23, 1947	Depth 968'
Date shot	1-10-47 Depth 1318 to 1330 with 40 qts. nitro glycerine, Sand Tamp	
Open flow	No record	No perf. top or bottom
Volume	No record	
Rock Pressure	No record	Casing not cemented
Oil	Twelve (12) bbls. 1st 24 hrs.	
Fresh Water	60'; 105'	Coal at 287'; 355'
Salt Water	390'; 555'	

Sand & Gravel Br	S	0	55	
Red Rock	H	55	60	
Slate Bk	M	60	105	
Sand Lt	S	105	125	
Slate & Shells Dk	M	125	287	
Coal Dk	M	287	292	
Slate & Shells Dk	M	292	356	
Coal Dk	M	355	360	A little gas
Slate & Shells Dk	M	360	390	
Sand Lt	S	390	450	
Slate & Shells Dk	M	450	555	
Sand Lt	M	555	580	
Slate Dk	M	580	615	
Lime Wh	H	615	625	
Sand Lt	S	625	660	
Slate Dk	M	660	665	
Lime Wh	H	665	800	
Sand Lt	M	800	960	Big Injun
Slate Dk	M	960	965	
Lime Gr	M	965	980	
Slate & Shells Dk	M	980	1085	
Lime Wh	H	1085	1120	
Slate & Shells Dk	M	1120	1275	
Lime Wh	H	1275	1305	
Slate Bk	H	1305	1312	
Berea Sand S Lt Brown		1312	1330	

Total depth of well 1330'  
Production of oil has exceeded 12 bbls. per day from January 24, 1947 to date.  
No rock pressure, gas production estimated at 1000' per day.