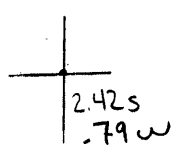


40°22'30"

Latitude

80°35'00"

Longitude



Topo Location

7.5' Loc. _____ 15' Loc. _____
 _____ (calc.) _____

Company Wheeling Steel Corp

Farm Wheeling Steel Corp #117

15' Quad _____
(sec.)

7.5' Quad Steubenville East

District Cross Creek

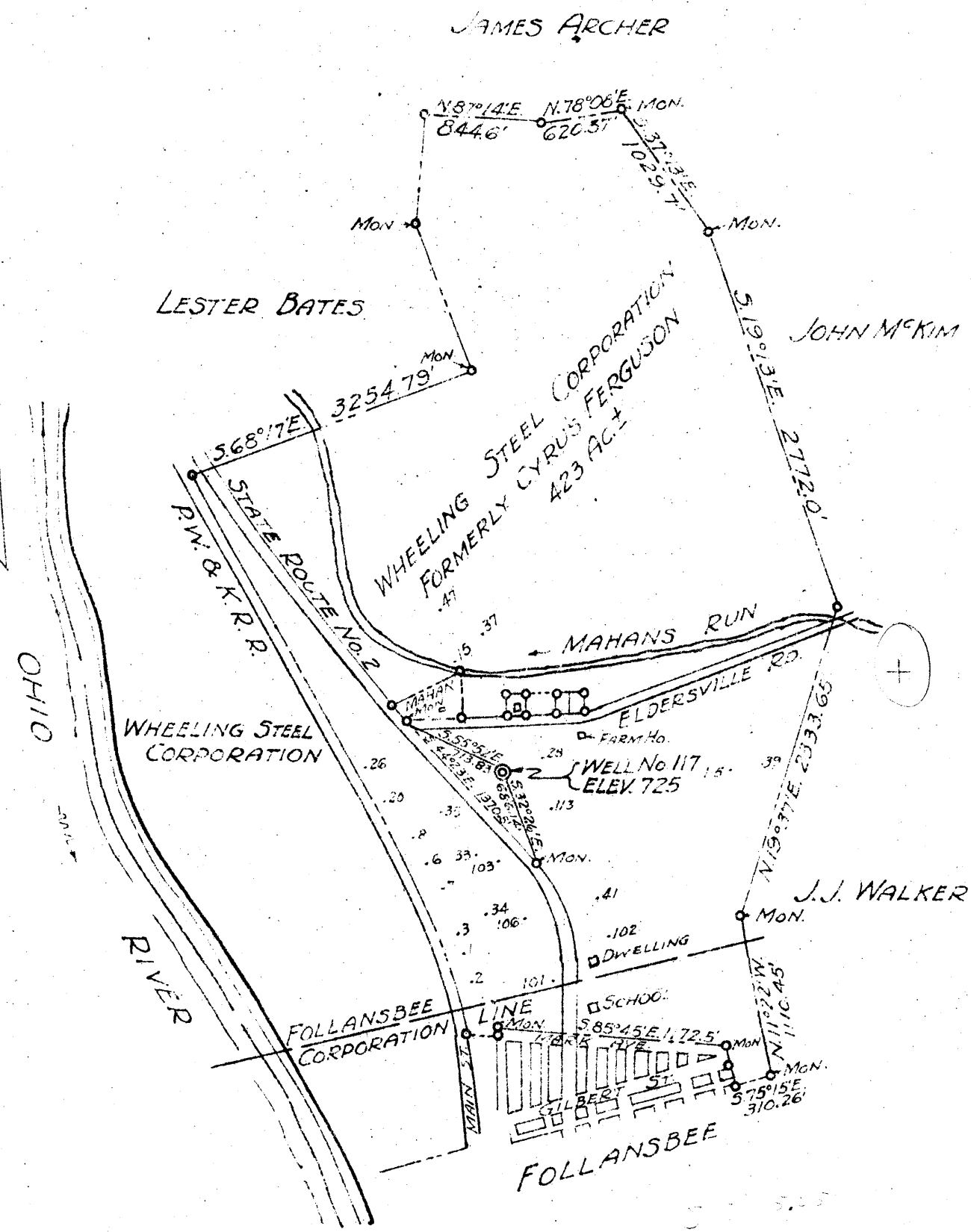
WELL LOCATION PLAT

County 009 **Permit** 48

m

0 1 2 3 LATITUDE 40 25

LONGITUDE 80 35



- NEW LOCATION
- DRILL DEEPER
- ABANDONMENT

COMPANY WHEELING STEEL CORPORATION
 ADDRESS (GENERAL OFFICE) WHEELING, W. VA.
 FARM WHEELING STEEL CORPORATION (FORMERLY CYRUS FERGUSON)
 TRACT _____ ACRES. 423¹/₂ LEASE NO. _____
 WELL (FARM) NO. 117 SERIAL NO. _____
 ELEVATION (SPIRIT LEVEL). 725
 QUADRANGLE STEUBENVILLE C
 COUNTY BROOKE DISTRICT CROSS CREEK
 ENGINEER SIDNEY C. SMITH - C.C. SMITH'S SONS
 ENGINEER'S REGISTRATION NO. 240
 FILE NO. _____ DRAWING NO. _____
 DATE Nov. 12, 1946 SCALE 1" = 1000'

STATE OF WEST VIRGINIA
 DEPARTMENT OF MINES
 OIL AND GAS DIVISION
 CHARLESTON

WELL LOCATION MAP
 FILE NO. BRO-48

— DENOTES LOCATION OF WELL ON UNITED STATES TOPOGRAPHIC MAPS. SCALE 1 TO 62,500. LATITUDE AND LONGITUDE LINES BEING REPRESENTED BY BORDER LINES AS SHOWN.
 — DENOTES ONE INCH SPACES ON BORDER LINE OF ORIGINAL TRACING.

WEST VIRGINIA DEPARTMENT OF MINES
OIL & GAS DIVISION
W E L L R E C O R D

Permit No. Bro 48					
Steubenville Quad.					Oil Well
Company	Wheeling Steel Corporation				CASING & TUBING
Address	Wheeling, W.Va.	16	15	out	
Farm	Corporation Acres 423	10	70	70	
Location	1/2 mile east of Ohio River	8 1/2	270	270	
Well No.	117 Elev. 725	6 5/8	986	966	
District	Cross Creek Brooke County				
Surface	Wheeling Steel Corp., Wheeling, W.Va.				No liners used
Mineral	Same				
Commenced	Feb. 14, 1947				No Packer
Completed	April 10, 1947				
Not shot					Casing not cemented
Volume	Small-no record				
Oil	One Fourth 1/4 bbls. 1st 24 hrs.				Coal at 235' ; 250'
Fresh Water	50; 120				
Salt Water	555; 1313-1335				

Sand & Gravel	Br	S	0	70	
Clay	Y	M	70	115	
Limestone	Wh	M	115	135	
Red Rock		H	135	170	
Clay	Wh	S	170	190	
Red Rock		H	190	230	
Shale	Bk	S	230	235	
Coal	Bk	S	235	240	Upper Freeport
Mud	Wh	S	240	250	
Coal	Bk	S	250	255	Lower Freeport
Mud	Gr	S	255	270	
Limestone	Gr	H	270	280	
Slate	Bk	M	280	295	
Limestone	Gr	H	295	310	
Shale	Bk	S	310	365	
Sand	Lt	S	365	460	
Shale	Bk	M	460	555	
Sand	Lt	M	555	630	Salt
Slate	Gr	H	630	665	
Big Lime	Wh	H	665	805	
Sand	Wh	M	805	965	Big Injun
Slate	Dk	H	965	1230	
Sand	Br	M	1230	1260	
Slate	Gr	M	1260	1313	
Sand	Wh	S	1313	1335	Berea

NOTE: This well will be plugged on account of water in Berea Sand