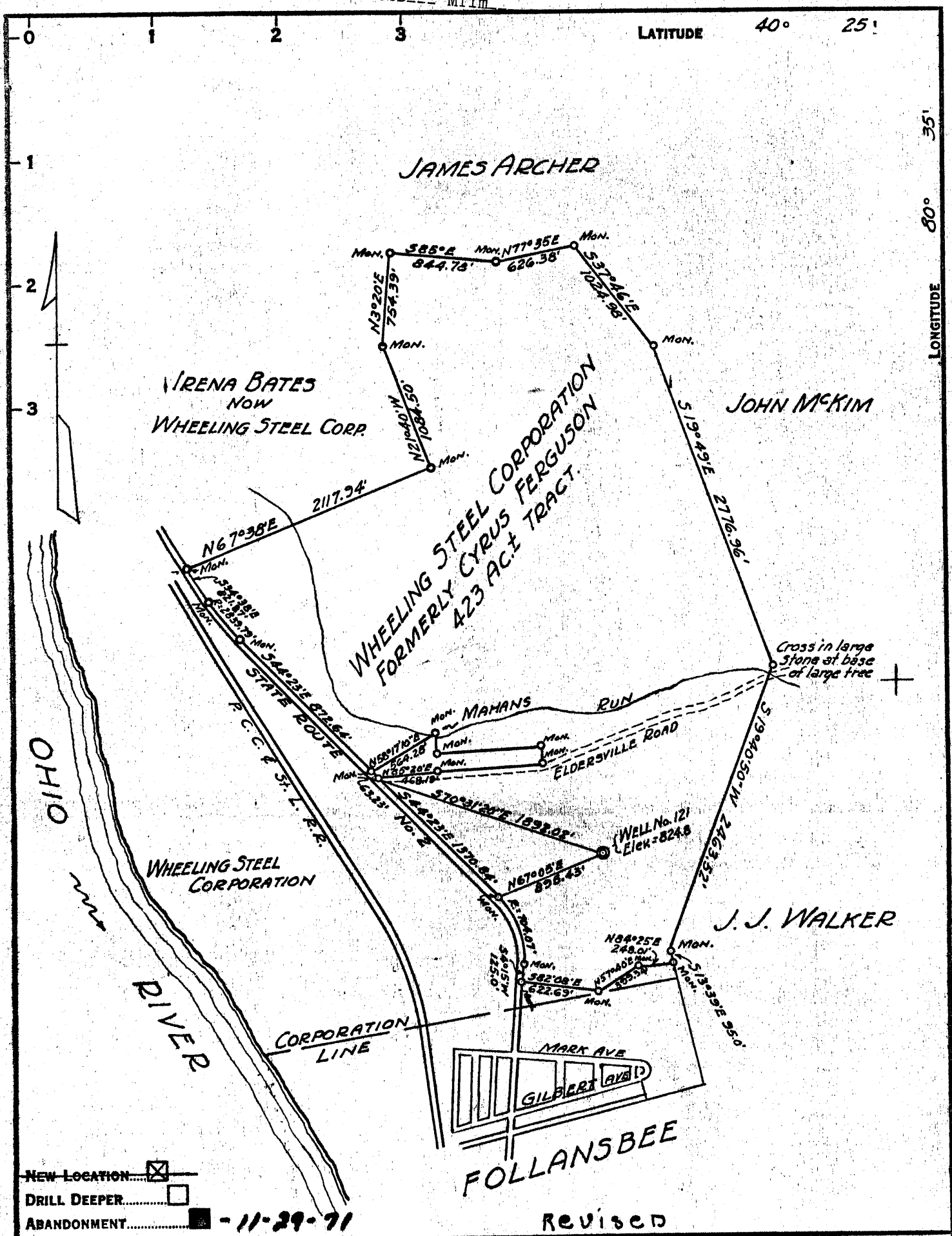


NEW LOCATION  
 DRILL DEEPER  
 ABANDONMENT - 11-29-71

Revised

COMPANY WHEELING STEEL CORPORATION  
 ADDRESS Box 42, Sistersville, W. Va. 26175  
 FARM WHEELING STEEL CORPORATION (FORMERLY CYRUS FERGUSON)  
 TRACT \_\_\_\_\_ ACRES 423± LEASE NO. \_\_\_\_\_  
 WELL (FARM) No. 121 SERIAL No. \_\_\_\_\_  
 ELEVATION (SPIRIT LEVEL) 824.8  
 QUADRANGLE STUEBENVILLE  
 COUNTY BROOKE DISTRICT CROSS CREEK  
 ENGINEER GEORGE K. LANG - C.C. SMITH'S SONS  
 ENGINEER'S REGISTRATION No. 1590  
 FILE No. \_\_\_\_\_ DRAWING No. \_\_\_\_\_  
 DATE Nov. 12, 1948 SCALE 1" = 1000'

STATE OF WEST VIRGINIA  
 DEPARTMENT OF MINES  
 OIL AND GAS DIVISION  
 CHARLESTON  
**WELL LOCATION MAP**  
 FILE No. BR0-53-P  
Plugging Cancelled - 5-16-72  
 + DENOTES LOCATION OF WELL ON UNITED STATES TOPOGRAPHIC MAPS, SCALE 1 TO 62,500. LATITUDE AND LONGITUDE LINES BEING REPRESENTED BY BORDER LINES AS SHOWN.  
 — DENOTES ONE INCH SPACES ON BORDER LINE OF ORIGINAL TRACING.



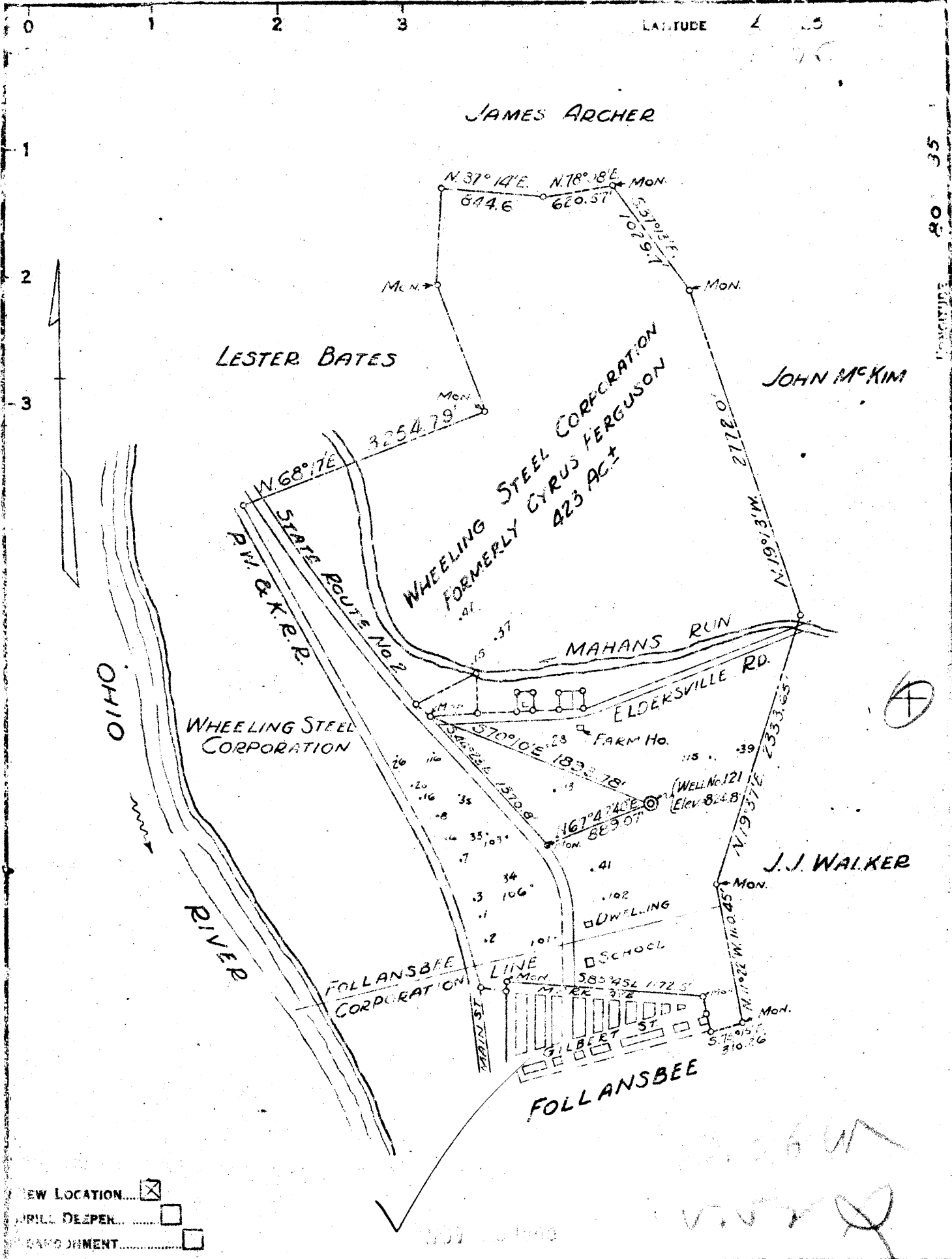
Revised

COMPANY ~~WHEELING STEEL CORPORATION~~  
 ADDRESS ~~BOX #2, SISTERSVILLE, W.V. 26175~~  
 GENERAL OFFICE WHEELING, W. VA.  
 FARM ~~WHEELING STEEL CORPORATION~~ (FORMERLY CYRUS FERGUSON)  
 TRACT \_\_\_\_\_ ACRES 423± LEASE No. \_\_\_\_\_  
 WELL (FARM) No. 121 SERIAL No. \_\_\_\_\_  
 ELEVATION (SPIRIT LEVEL) 824.8  
 QUADRANGLE STEUBENVILLE  
 COUNTY BROOKE DISTRICT CROSS CREEK  
 ENGINEER GEORGE K. LANG - C.C. SMITH'S SONS  
 ENGINEER'S REGISTRATION No. 1590  
 FILE No. \_\_\_\_\_ DRAWING No. \_\_\_\_\_  
 DATE Nov. 12, 1948 SCALE 1"=1000'

STATE OF WEST VIRGINIA  
 DEPARTMENT OF MINES  
 OIL AND GAS DIVISION  
 CHARLESTON

**WELL LOCATION MAP**  
 FILE No. **BRO-53-P**

+ DENOTES LOCATION OF WELL ON UNITED STATES TOPOGRAPHIC MAPS. SCALE 1 TO 62,500. LATITUDE AND LONGITUDE LINES BEING REPRESENTED BY BORDER LINES AS SHOWN.  
 - DENOTES ONE INCH SPACES ON BORDER LINE OF ORIGINAL TRACING.



NEW LOCATION...   
 DRILL DEEPER...   
 SAND SHIMMENT...

COMPANY WHEELING STEEL CORPORATION  
 ADDRESS (GENERAL OFFICE) WHEELING, W. VA.  
 FROM WHEELING STEEL CORPORATION (FORMERLY CYRUS FERGUSON)  
 TRACT ACRES 463<sup>1</sup> LEASE NO. \_\_\_\_\_  
 WELL (FARM) NO. 121 SERIAL NO. \_\_\_\_\_  
 ELEVATION (SPIRIT LEVEL) 324.8  
 TOWNSHIP STUBENVILLE  
 COUNTY BROCKE DISTRICT CROSS CREEK  
 ENGINEER GEORGE A. LANG - C. L. SMITH'S SONS  
 ENGINEER'S REGISTRATION NO. 1590  
 FILE NO. \_\_\_\_\_ DRAWING NO. \_\_\_\_\_  
 DATE July 29, 1948 SCALE 1" = 1000'

STATE OF WEST VIRGINIA  
 DEPARTMENT OF MINES  
 OIL AND GAS DIVISION  
 CHARLESTON  
**WELL LOCATION MAP**  
 FILE NO. BRO-53  
 — DENOTES LOCATION OF WELL ON UNITED STATES TOPOGRAPHIC MAPS SCALE 1 TO 62,500. LATITUDE AND LONGITUDE LINES BEING REPRESENTED BY BORDER LINES AS SHOWN.  
 — DENOTES ONE INCH SPACES ON BORDER LINE OF ORIGINAL TRACING.

WEST VIRGINIA DEPARTMENT OF MINES  
OIL & GAS DIVISION  
W E L L R E C O R D

Permit No.	Bro 53 R				
Steubenville Quad.					
Company	Wheeling Steel Corp.				Oil Well
Address	Wheeling, W.Va.	16	15	15	CASING & TUBING
Farm	Corp. Acres 423	13	None	None	
Location	1 Mile East of Ohio River	10	136	None	
Well No.	121 Elev. 824.8'	8 1/2	406	406	
District	Cross Creek Brooke County	6 5/8	1072	1072	
Surface	Wheeling Steel Corp. Wheeling, W.Va.	2 tubing	1434	1434	
Mineral	Same				No liners used
Commenced	Oct. 26, 1948				Casing not cemented
Completed	Jan. 7, 1949				No coal
Date shot	1-12-49 Depth 1416' to 1432'				
Open flow	with 40 qts. nitro glycerine 16' shell				
Volume	No record				
Rock Pressure	very small				
Oil	No record				
Fresh Water	Surface to 660' W 70'				
Salt Water	660' to bottom				

Clay	Y	S	0	50	
Shale	Bl	M	50	60	
Shale	Gr	M	60	65	
Red Rock		H	65	100	
Shale	Gr	M	100	155	
Red Rock		H	155	160	
Shale	Gr	M	160	190	
Sand	Br	S	190	229	
Shale	Blk	S	229	246	
Shale	Gr	M	246	300	
Lime	Wh	H	300	315	
Shale	Gr	M	315	320	
Slate	Wh	S	320	340	
Slate	Blk	S	340	370	
Shale	Gr	M	370	375	
Shale	Blk	S	375	390	
Slate	Blk	S	390	400	
Shale & Shells	Dk	M	400	420	
Slate	Blk	S	420	460	
Shale	Gr	M	460	475	
Lime	Wh	H	475	480	
Slate	Blk	S	480	500	
Sand	Wh	M	500	565	
Slate	Blk	S	565	587	
Slate & Shells	Wh	M	587	660	
Sand	Wh	M	660	710	Salt Sand
Slate	Blk	S	710	770	
Lime	Wh	H	770	935	Big Lime
Sand	Wh	M	935	1070	Injun
Shale	Gr	M	1070	1085	
Lime	Wh	M	1085	1125	
Shale & Shells	Gr	M	1125	1350	
Lime	Wh	H	1350	1390	
Shale	Blk	M	1390	1412	
Sand	Br	H	1412	1414	Berea
Sand	Br	S	1414	1433	
Shale	Blk	M	1433	1436	

NOTE: While well record (driller's log) shows no coal measures encountered, it is quite probable that some Upper Freeport coal exists at about depth point 340' and some Lower Freeport coal at about 380' depth.

With the application of vacuum, which is available, it is expected that the oil production from this well will average 5 bbls. per day.