

40°22'30"

Latitude

80°35'00"

Longitude

2.42s
.71w

Topo Location

7.5' Loc. _____ 15' Loc. _____
 _____ (calc.) _____

Company Wheeling Steel Corp

Farm Wheeling Steel Corp #125

15' Quad _____
(sec.)

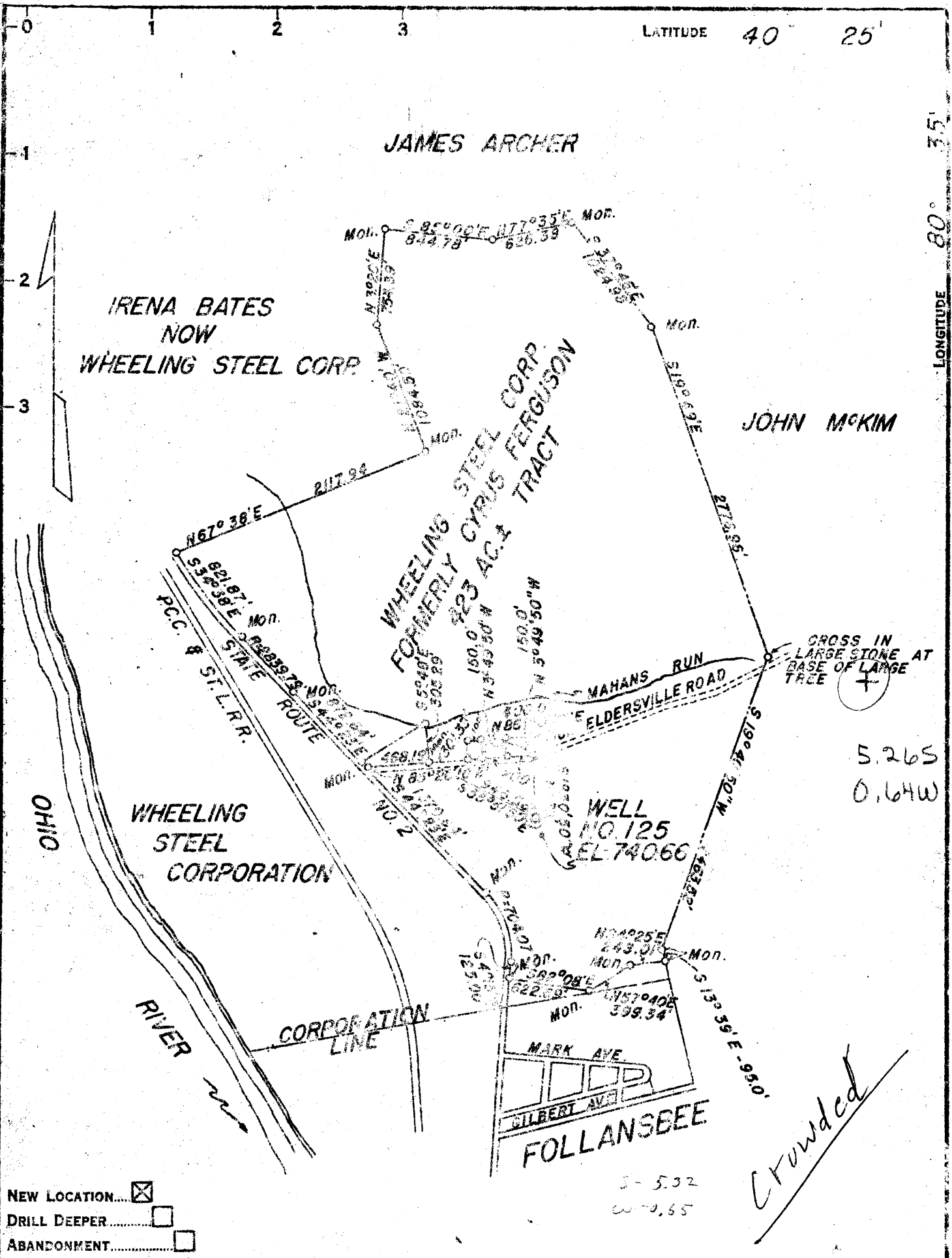
7.5' Quad Steubenville East

District Cross Creek

WELL LOCATION PLAT

County 009 **Permit** 59

M



LATITUDE 40 25'

LONGITUDE 80 35'

JAMES ARCHER

IRENA BATES
NOW
WHEELING STEEL CORP.

JOHN McKIM

WHEELING STEEL CORP.
FORMERLY CYRUS FERGUSON
423 AC. TRACT

OHIO

WHEELING
STEEL
CORPORATION

RIVER

CORPORATION
LINE

MAHANS RUN
ELDERSVILLE ROAD

CROSS IN
LARGE STONE AT
BASE OF LARGE
TREE

5.26S
0.64W

WELL
NO. 125
EL. 740.66

MARK AVE.
GILBERT AVE.
FOLLANSBEE

Crowded

- NEW LOCATION...
- DRILL DEEPER...
- ABANDONMENT...

COMPANY WHEELING STEEL CORP.
 ADDRESS (GENERAL OFFICE) WHEELING, W. VA.
 FARM WHS STEEL CORP. FORMERLY CYRUS FERGUSON
 TRACT _____ ACRES 423 1/2 LEASE NO. _____
 WELL (FARM) NO. 125 SERIAL NO. _____
 ELEVATION (SPIRIT LEVEL) 740.66
 QUADRANGLE STEUBENVILLE C
 COUNTY BROOKE DISTRICT CROSS CK.
 ENGINEER SIDNEY C. SMITH
 ENGINEER'S REGISTRATION NO. 240
 FILE NO. _____ DRAWING NO. _____
 DATE MAR. 10, 1959 SCALE 1" = 1000'

STATE OF WEST VIRGINIA
 DEPARTMENT OF MINES
 OIL AND GAS DIVISION
 CHARLESTON

WELL LOCATION MAP

FILE NO. BR0-59

+ DENOTES LOCATION OF WELL ON UNITED STATES TOPOGRAPHIC MAPS, SCALE 1 TO 62,500, LATITUDE AND LONGITUDE LINES BEING REPRESENTED BY BORDER LINES AS SHOWN.

— DENOTES ONE INCH SPACES ON BORDER LINE OF ORIGINAL TRACING.

WEST VIRGINIA DEPARTMENT OF MINES
OIL & GAS DIVISION
W E L L R E C O R D

Permit No. Bro 59
Steubenville Quad.
Company
Address
Farm
Location
Well No.
District
Surface

Wheeling Steel Corp.
Wheeling, W.Va.
Corp. Acres 423
3/4 Mile East of Ohio River
125 Elev. 740.66
Cross Creek Brooke County
Wheeling Steel Corp.
Wheeling, W.Va.

Oil Well
CASING & TUBING

	16 Wood	18	18
	10	108	108
	8 1/2	330	330
	6 5/8	988	988
	2	1348	1348

Mineral
Commenced
Completed
Date shot

Same
March 8, 1950
May 30, 1950
May 31, 1950 Depth 1332 to 1346
with 120# gelatin

No Packer
Casing not cemented
Coal at 258' 36"
297' 36"

Open flow
Rock Pressure
Oil
Fresh Water
Salt Water

No record
Small No record hrs.
Five bbls. 1st 24 hrs.
50'; 120'
570'

Clay	Y	S	0	10	
Clay	Bl	S	10	20	
Sand & Gravel	Br	S	20	50	
Red Rock		H	50	55	
Slate	Blk	M	55	80	
Slate	Wh	M	80	115	
Sand	Br	M	115	135	
Slate	Wh	M	135	190	
Red Rock		H	190	200	
Slate	Dk	M	200	258	
Coal	Blk	S	258	261	Upper Freeport
Limestone	Gr	H	261	270	
Slate	Blk	M	270	297	
Coal	Blk	S	297	300	Lower Freeport
Slate	Dk	M	300	395	
Sand	Br	M	395	470	Broken
Slate	Gr	H	470	535	
Slate	Blk	M	535	570	
Salt Sand	Wh	M	570	620	
Sand	Br	M	620	655	
Slate	Gr	M	655	685	
Limestone	Wh	H	685	785	Big Lime
Sand	Wh	H	785	985	Big Injun
Slate	Dk	H	985	990	
Limestone	Blk	H	990	1005	
Slate	Wh	H	1005	1060	
Slate & Lime Shells	Dk	M	1060	1170	
Shale	Gr	S	1170	1215	
Limestone	Dk	Gritty	1215	1250	
Slate & Lime Shells	Dk	M	1250	1329	
Sand	Lt& Br.	S to H	1329	1348	Berea Sand
Shale	Blk	M	1348	1350	Bottom of Hole