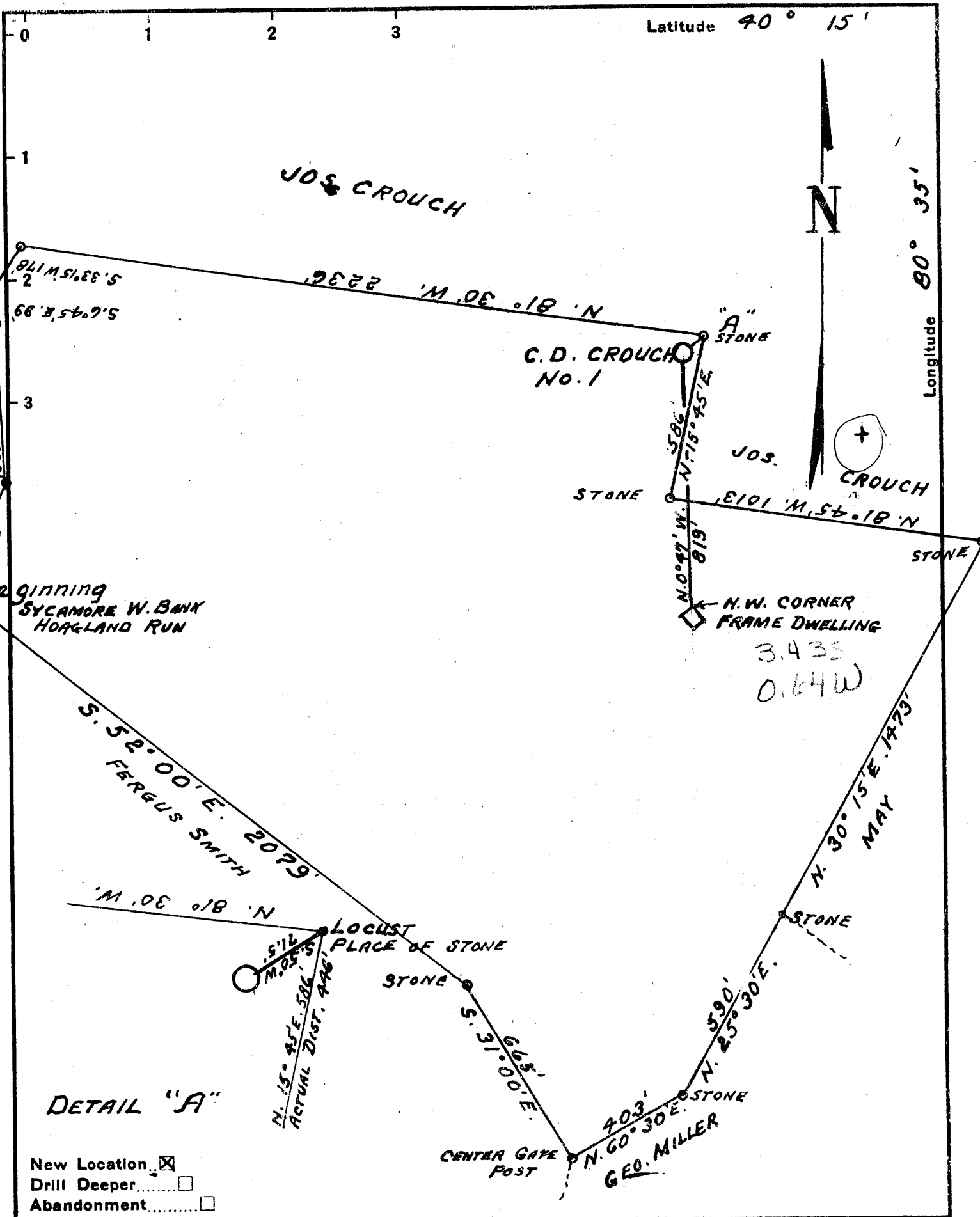




M



Beginning  
SYCAMORE W. BANK  
HOAGLAND RUN

DETAIL "A"

- New Location
- Drill Deeper
- Abandonment

Company A. H. REBER  
 Address MOUNDSVILLE, W. VA.  
 Farm C. D. CROUCH  
 Tract 1 Acres 124 Lease No. \_\_\_\_\_  
 Well (Farm) No. 1 Serial No. \_\_\_\_\_  
 Elevation (Spirit Level) 1123  
 Quadrangle WHEELING  
 County BROOKE District BUFFALO  
 Engineer GORDON W. SAMMONS  
 Engineer's Registration No. 509  
 File No. \_\_\_\_\_ Drawing No. \_\_\_\_\_  
 Date APRIL-13-1953 Scale 1" = 400'

STATE OF WEST VIRGINIA  
 DEPARTMENT OF MINES  
 OIL AND GAS DIVISION  
 CHARLESTON

**WELL LOCATION MAP**  
 FILE NO. BR0-67

- + Denotes location of well on United States Topographic Maps, scale 1 to 62,500, latitude and longitude lines being represented by border lines as shown.
- Denotes one inch spaces on border line of original tracing.



STATE OF WEST VIRGINIA  
DEPARTMENT OF MINES  
OIL AND GAS DIVISION

*Wheeling*

WELL RECORD

Oil or Gas Well Dry Hole  
(KIND)

Permit No. BRO-67

Company A.H. Reber  
Address 1416 Seventh St Moundsville W.Va  
Farm Stanley G. Wilhelm Acres \_\_\_\_\_  
Location (waters) Bufalo Creek  
Well No. (1) Elev. 1123'  
District Bufalo County Brooke  
The surface of tract is owned in fee by Stanley G. Wilhelm Address \_\_\_\_\_  
Mineral rights are owned by \_\_\_\_\_ Address \_\_\_\_\_  
Drilling commenced May 20 - 1953  
Drilling completed Sept 10 - 1953  
Date Shot \_\_\_\_\_ From \_\_\_\_\_ To \_\_\_\_\_  
With \_\_\_\_\_  
Open Flow \_\_\_\_\_ /10ths Water in \_\_\_\_\_ Inch  
\_\_\_\_\_ /10ths Merc. in \_\_\_\_\_ Inch  
Volume \_\_\_\_\_ Cu. Ft.  
Rock Pressure \_\_\_\_\_ lbs. \_\_\_\_\_ hrs.  
Oil \_\_\_\_\_ bbls., 1st 24 hrs.  
Fresh water \_\_\_\_\_ feet \_\_\_\_\_ feet  
Salt water \_\_\_\_\_ feet \_\_\_\_\_ feet

Casing and Tubing	Used in Drilling	Left in Well	Packers
Size			Kind of Packer
16			
18			
10			Size of
8 1/4	223	223	
6 3/4	1200	1200	Depth set
5 3/16	1650	1650	
3			Perf. top
2			Perf. bottom
Liners Used			Perf. top
			Perf. bottom

CASING CEMENTED \_\_\_\_\_ SIZE \_\_\_\_\_ No. Ft. \_\_\_\_\_ Date \_\_\_\_\_  
COAL WAS ENCOUNTERED AT 200 FEET \_\_\_\_\_ INCHES  
\_\_\_\_\_ FEET \_\_\_\_\_ INCHES FEET \_\_\_\_\_ INCHES  
\_\_\_\_\_ FEET \_\_\_\_\_ INCHES FEET \_\_\_\_\_ INCHES

Formation	Color	Hard or Soft	Top	Bottom	Oil, Gas or Water	Depth Found	Remarks
Clay	Light	Soft	0	20			
Slate & Shells		Medium	20	140			
Black Slate		Soft	140	142			
Slate & Shells		Medium	142	175			
Lime	Light	Hard	175	200			
Coal	Dark	Soft	200	205			
Lime	Light	Hard	205	235			
Slate	Dark	Soft	235	240			
Lime	Light	Hard	240	295			
Slate	Dark	Soft	295	300	2 Bailers Water at 540 Feet		
Lime	Light	Hard	300	340			
Red-Rock	Red	Soft	340	345	Hole Full Water at 1158		
Lime	Light	Hard	345	490			
Slate & shells		Medium	490	510			
Sand	Light	Hard	510	535			
Slate	Dark	Soft	535	575			
Red Rock	Red	Soft	575	582			
Slate	Dark	Soft	582	590			
Sand	Light	Hard	590	650			
Slate & Shells		Medium	650	770			
Red Rock	Red	Soft	770	780			
Slate & Shells		Medium	780	845			
Lime	Light	Hard	845	930			
Sand	Light	Hard	930	945			
Slate	Dark	Soft	945	970			
Lime	Light	Hard	970	985			
Slate	Dark	Soft	985	1070			
Lime	Light	Hard	1070	1085			
Sand	Light	Hard	1085	1245			
Slate	Dark	Soft	1245	1255			
Sand	Light	Hard	1255	1290			
Lime	Light	Hard	1290	1385			
Sand	Light	Hard	1385	1630			
Slate & Shells		Medium	1630				
					2035	Total Depth	

