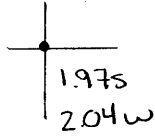


40°17'30"

Latitude

80°32'30"

Longitude



Topo Location

7.5' Loc. _____ 15' Loc. _____
 _____ (calc.) _____

Company Robert Wharton

Farm Newton Ice & Coal Co #1

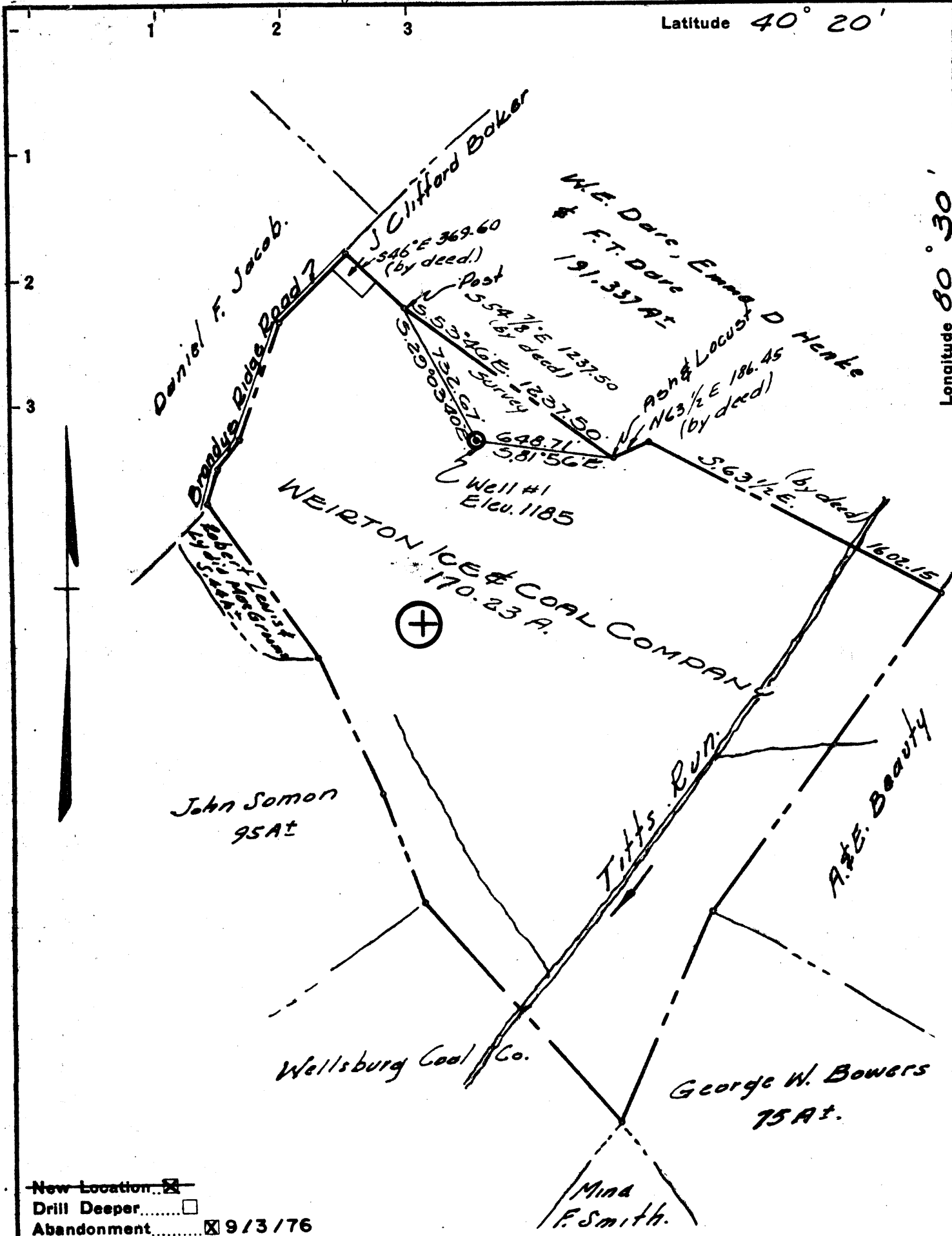
15' Quad _____
(sec.)

7.5' Quad Steubenville East

District Buffalo

WELL LOCATION PLAT

County 009 Permit 71



New Location
 Drill Deeper
 Abandonment 913176

Company ROBERT WHARTON
 Address 9 1/2 Franklin St. Buckhannon WV
 Farm WEIRTON ICE & COAL COMPANY
 Tract 1 Acres 170.23 Lease No. _____
 Well (Farm) No. 1 Serial No. _____
 Elevation (Spirit Level) 1185 SE
 Quadrangle STUBENVILLE 16'
 County BROOKE District BUFFALO
 Engineer N. JAMES SCHELLHASE
 Engineer's Registration No. 1673
 File No. Wellsburg-P.35 Drawing No. _____
 Date April 1, 1955 Scale 1 in. = 600 ft.

STATE OF WEST VIRGINIA
 DEPARTMENT OF MINES
 OIL AND GAS DIVISION
 CHARLESTON

WELL LOCATION MAP
 FILE NO. BR0-71-P

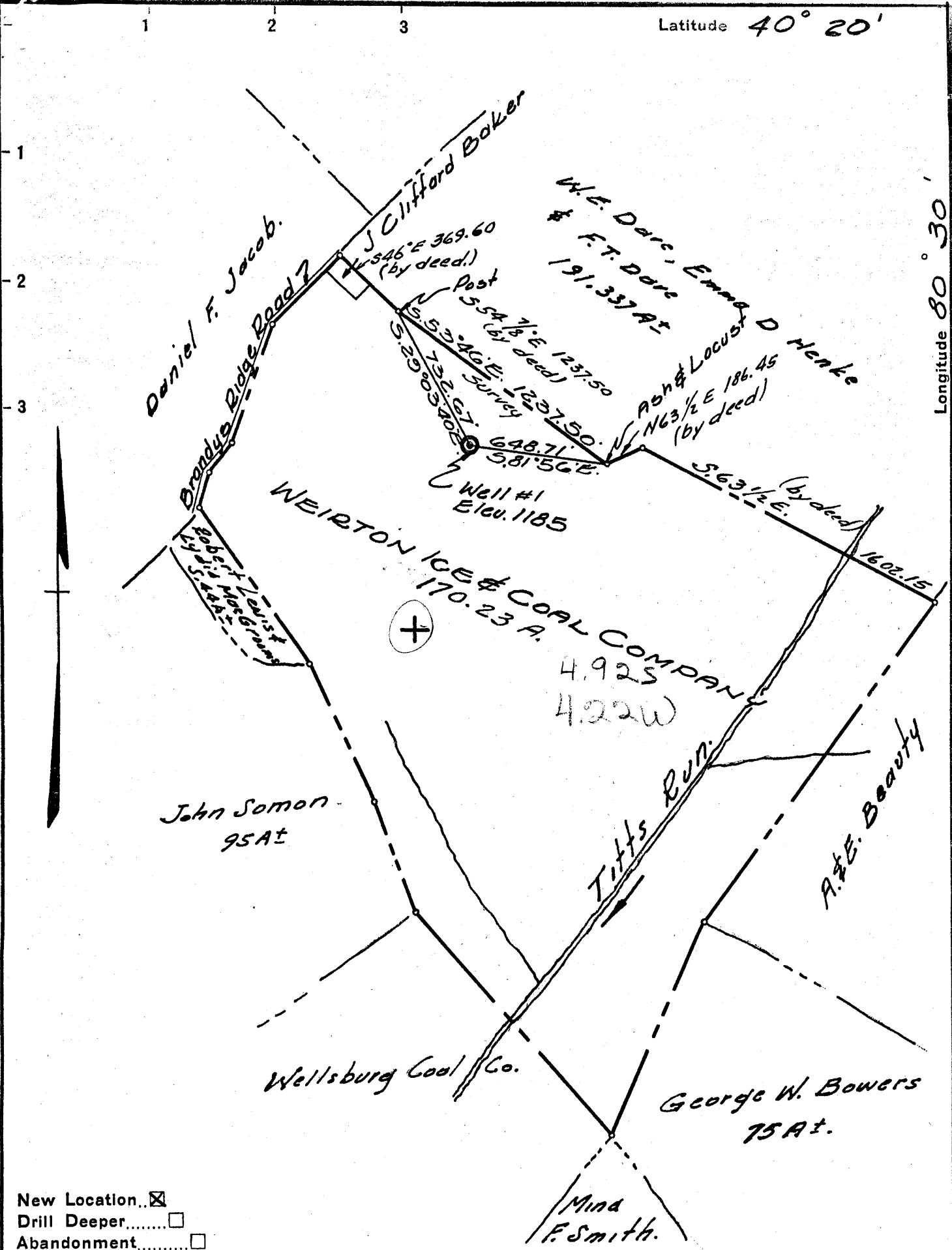
+ Denotes location of well on United States Topographic Maps, scale 1 to 62,500, latitude and longitude lines being represented by border lines as shown.

- Denotes one inch spaces on border line of original tracing.

47-009

Latitude 40° 20'

Longitude 80° 30'



New Location..
 Drill Deeper.....
 Abandonment.....

Company QUAKER STATE OIL REFINING COMPANY
 Address P.O. Box 1870, PARKERSBURG, W. VA.
 Farm WEIRTON ICE & COAL COMPANY
 Tract 1 Acres 170.23 Lease No. _____
 Well (Farm) No. 1 Serial No. _____
 Elevation (Spirit Level) 1185
 Quadrangle STUBENVILLE
 County BROOKE District BUFFALO
 Engineer N. JAMES SCHELLHASE
 Engineer's Registration No. 1673
 File No. Wellsburg, P. 35 Drawing No. _____
 Date April 1, 1955 Scale 1 in. = 600 ft.

STATE OF WEST VIRGINIA
 DEPARTMENT OF MINES
 OIL AND GAS DIVISION
 CHARLESTON

WELL LOCATION MAP
 FILE NO. BR0-71

+ Denotes location of well on United States Topographic Maps, scale 1 to 62,500, latitude and longitude lines being represented by border lines as shown.
 - Denotes one inch spaces on border line of original tracing.



STATE OF WEST VIRGINIA
DEPARTMENT OF MINES
OIL AND GAS DIVISION

Stonewalla

WELL RECORD

Oil or Gas Well Oil

(KIND)

Permit No. Bro - 71

Company Quaker State Oil Refining Corp.
Address 1222 Market Street, Parkersburg, W. Va.

Farm _____ Acres 170

Location (waters) _____

Well No. One (1) Elev. 1185

District Buffalo County Brooke

The surface of tract is owned in fee by _____
Address _____

Mineral rights are owned by _____
Address _____

Drilling commenced May 16, 1955

Drilling completed June 28, 1955

Date Shot _____ From _____ To _____

With _____

Open Flow _____ /10ths Water in _____ Inch
_____ /10ths Merc. in _____ Inch

Volume _____ Cu. Ft.

Rock Pressure _____ lbs. _____ hrs.

Oil _____ bbls., 1st 24 hrs.

Fresh water _____ feet _____ feet

Salt water _____ feet _____ feet

Casing and Tubing	Used in Drilling	Left in Well	Packers
Size			
* Cond. 12'			Kind of Packer
* 8" 1149'			
10. 246'8"			Size of
* 7" 1623'9"			
6 1/2			Depth set
5 3/16			
3			Perf. top
2			Perf. bottom
Liners Used			Perf. top
			Perf. bottom

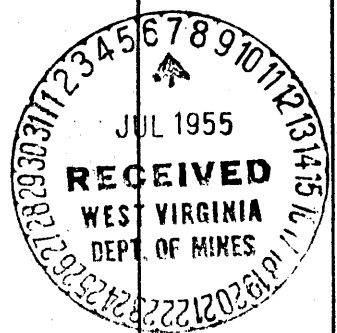
CASING CEMENTED _____ SIZE _____ No. Ft. _____ Date _____

COAL WAS ENCOUNTERED AT _____ FEET _____ INCHES

_____ FEET _____ INCHES FEET _____ INCHES

_____ FEET _____ INCHES FEET _____ INCHES

Formation	Color	Hard or Soft	Top	Bottom	Oil, Gas or Water	Depth Found	Remarks
Clay	Yellow	Soft	0	14			
Slate	Grey	Soft	14	20			
Slate	Yellow	Soft	20	56			
Slate	Grey	Soft	56	72			
Lime	White	Hard	72	96			
Slate	Grey	Soft	96	104			
Slate	White	Soft	104	207			
Slate	Dark	Soft	207	223			
Coal	Blue	Soft	223	230			
Lime	White	Hard	230	290			
Lime	White	Soft	290	313			
Lime	White	Hard	313	346			
Sand	White	Hard	346	412			
Slate	Dark	Soft	412	480			
Slate	Red	Soft	480	490			
Slate	Grey	Soft	490	496			
Slate	Red	Soft	496	501			
Slate	Grey	Soft	501	544			
Slate	Dark	Soft	544	584			
Slate	Grey	Soft	584	630			
Lime	White	Hard	630	635			
Slate	Dark	Soft	635	670			
Slate	Grey	Soft	670	689			
Sand	White	Hard	689	709			
Red Rock		Soft	709	717			
Slate	Grey	Soft	717	745			
Big Dunkard	Dark/Grey	Med.	745	757			
Slate	Dark	Soft	757	765			
Slate	Grey	Soft	765	797			
Slate	Dark	Soft	797	805			
Sand	White	Soft	805	887			
Slate	Dark	Soft	887	903			
Slate	Grey	Soft	903	916			
Slate	Blue	Soft	916	930			
Slate	Grey	Soft	930	983			
Lime	White	Hard	983	1008			
Slate	Dark	Soft	1008	1048			
1st Salt Sand			1048	1118			



Formation	Color	Hard or Soft	Top /	Bottom	Oil, Gas or Water	Depth Found	Remarks
							3 bailers/hour
Slate	Dark	Soft	1105	1110	Water		
Lime Shell	White	Hard	1118	1146	(Salty)		
Slate	Dark	Soft	1146	1154			
			1154	1175	Water		
			1229	1235			
Sand	White	Hard	1175	1183			
Slate	Dark	Soft	1183	1188			
Lime	White	Hard	1188	1230	SLM 1237		
Sand	White	Hard	1230	1320	(Injun)		
			1410	1413	Water		
Slate	Dark	Soft	1320	1375			
Sand		Med.	1375	1357			
Slate	Dark	Soft	1357	1367			
Sand	Dark	Hard	1367	1388			
Slate	Dark	Hard	1388	1393			
Sand			1393	1524			
			1410	1413	Water		
Slate	Dark	Soft	1524	1527			
Lime	Dark	Hard	1527	1536			
Slate	Dark	Soft	1536	1621			
Lime		Hard	1621	1627	SLM 1623'9"		
Slate		Soft	1627	1632			
Lime Shell		Hard	1632	1654			
Slate	Dark	Soft	1654	1692			
Lime Shell	Grey	Hard	1692	1700			
Slate	Grey	Soft	1700	1732			
Shell	Grey	Hard		1794			
Lime	Grey	Hard		1813			
Slate	Grey	Soft		1852			
Slate	Black	Soft		1866			
Sand (Berea grit)			1866	1890	Oil and Water - 1870-1878		Show of Gas - 1868 4" H2O in 1" Orifice
Slate	Dark	Soft	1890	1902			
Gritty Lime			1902	1905			
				1904.7	- S.L.M.		

Logged by Bird Well: 6/29/55

Date July 5, 1955

APPROVED QUAKER STATE OIL REFIN'G. CORP. Owner