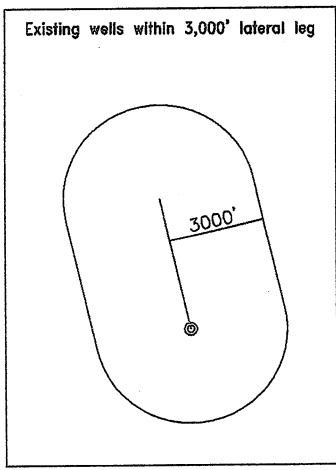
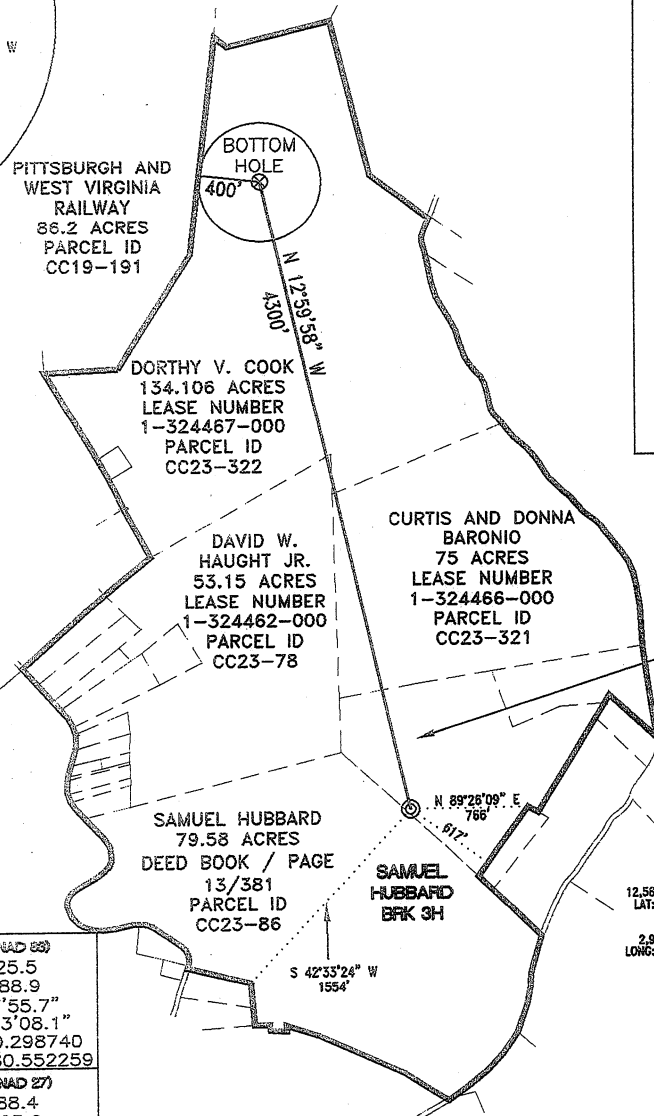
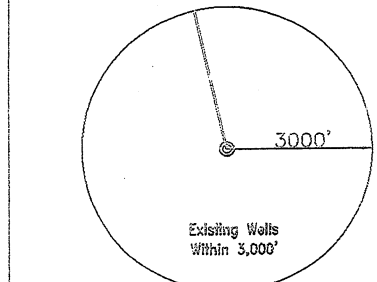
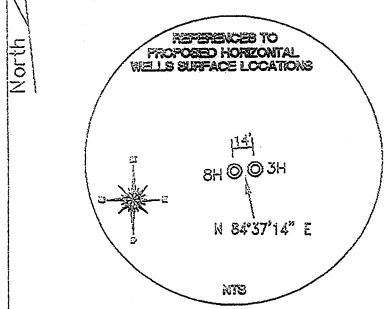
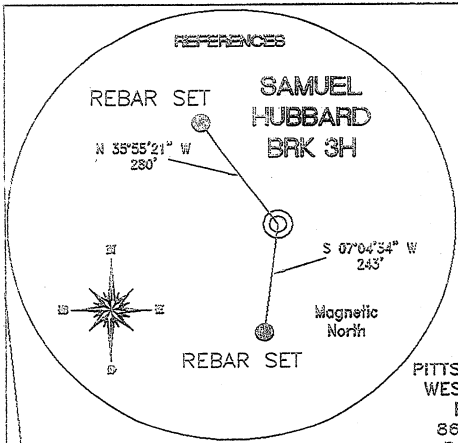


SURFACE HOLE DEC. LONG: 80.548616
 SURVEYED LONG: 80° 32' 55.0" ← 1,930'
 Latitude: 40° 17' 30"

Longitude: 80° 32' 30"
 SURFACE HOLE DEC. LAT: 40.287341
 SURVEYED LAT: 40° 17' 14.4"

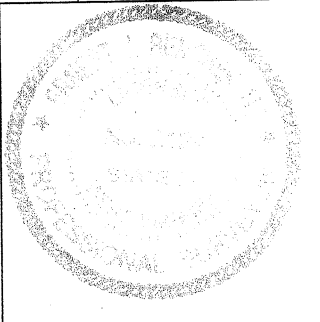


TOP HOLE (NAD 83) N) 852735.7 E) 1675956.1 LAT.) 40°17'14.4" LONG.) 80°32'55.0" DEC. LAT.) 40.287341 DEC. LONG.) 80.548616	BOTTOM HOLE (NAD 83) N) 856925.5 E) 1674988.9 LAT.) 40°17'55.7" LONG.) 80°33'08.1" DEC. LAT.) 40.298740 DEC. LONG.) 80.552259
TOP HOLE (NAD 27) N) 852698.6 E) 1707390.4 LAT.) 40°17'14.2" LONG.) 80°32'55.8" DEC. LAT.) 40.287271 DEC. LONG.) 80.548823	BOTTOM HOLE (NAD 27) N) 856888.4 E) 1706423.2 LAT.) 40°17'55.5" LONG.) 80°33'08.9" DEC. LAT.) 40.298740 DEC. LONG.) 80.552465

REFERENCE NOTES
 Boundaries as shown taken from deeds, tax maps and field locations. A full boundary survey is not expressed nor implied. All bearings are based on true north. Ownership taken from public records BROOKE County, West Virginia MAY 2011
 State Plane Coordinates & NAD 83 Lat/Long by differential submeter mapping grade GPS
 Drafted by: E.A.M.

FILE #: CHE 062
 DRAWING #: 1671
 SCALE: 1" = 1200'
 MINIMUM DEGREE OF ACCURACY: 1/200
 PROVEN SOURCE SUBMETER MAPPING OF ELEVATION: GRADE GPS

I, THE UNDERSIGNED, HEREBY CERTIFY THAT THIS PLAT IS CORRECT TO THE BEST OF MY KNOWLEDGE AND BELIEF AND SHOWS ALL THE INFORMATION REQUIRED BY LAW AND THE REGULATIONS ISSUED AND PRESCRIBED BY THE DEPARTMENT OF ENVIRONMENTAL PROTECTION.
 Signed:
 L.L.S. #2124 : Ernest J. Benchek III



(+) DENOTES LOCATION OF WELL ON UNITED STATES TOPOGRAPHIC MAPS WVDEP
 OFFICE OF OIL & GAS
 601 57TH STREET
 CHARLESTON, WV 25304

DATE: JUNE 28, 2011
 OPERATOR'S WELL #: SAMUEL HUBBARD BRK 3H
 API WELL #: 47 09 001064
 STATE COUNTY PERMIT

Well Type: Oil Waste Diposal Production Deep
 Gas Liquid Injection Storage Shallow

WATERSHED: UPPER OHIO SOUTH ELEVATION: 1,225'
 COUNTY/DISTRICT: BROOKE/CROSS CREEK QUADRANGLE: STEUBENVILLE EAST
 SURFACE OWNER: SAMUEL HUBBARD ACREAGE: 41.0 +/-
 OIL & GAS ROYALTY OWNER: SAMUEL HUBBARD ACREAGE: 303.256 +/-
 LEASE NUMBERS: _____

DRILL CONVERT DRILL DEEPER REDRILL FRACTURE OR STIMULATE
 PLUG OFF FORMATION PERFORATE NEW FORMATION PLUG & ABANDON
 CLEAN OUT & REPLUG OTHER CHANGE (SPECIFY): _____

TARGET FORMATION: UTICA ESTIMATED DEPTH: TVD: 9,020' TMD: 13,320'
 WELL OPERATOR: CHESAPEAKE APPALACHIA, LLC. DESIGNATED AGENT: ERIC GILLESPIE
 ADDRESS: PO BOX 18496 ADDRESS: PO BOX 6070
 CITY: OKLAHOMA CITY STATE: OK ZIP CODE: 73154-0496 CITY: CHARLESTON STATE: WV ZIP CODE: 25301

09/23/2011

9-00106H

WELL SAMUEL HUBBARD BRK SH
QUAD STEPHENSVILLE MS

EMERGENCY GATHERING AREA



GRAPHIC SCALE

09/23/2011