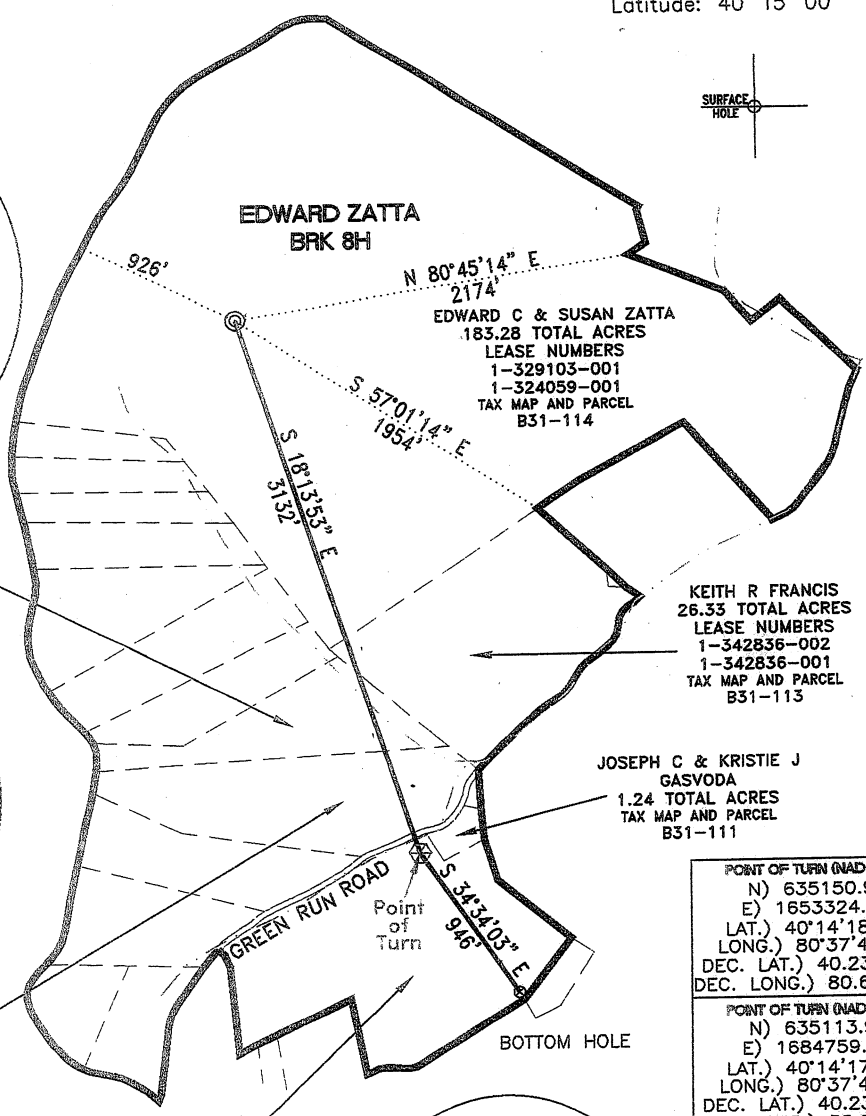
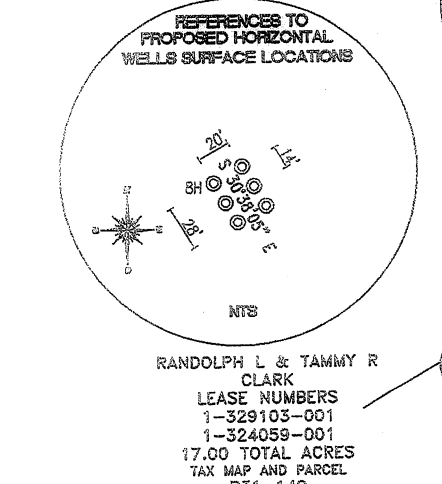
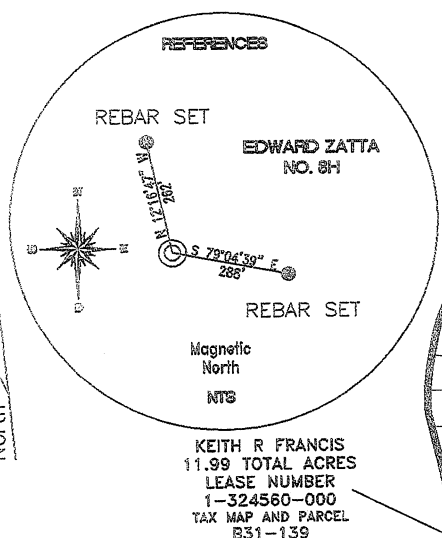


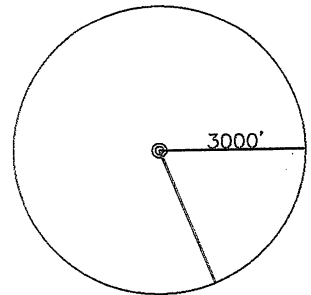
SURFACE HOLE DEC. LONG: 80.632583
 SURVEYED LONG: 80° 37' 57.3" → 2,120
 Latitude: 40° 15' 00"

Longitude: 80° 37' 30"
 SURFACE HOLE DEC. LAT: 40.246454
 SURVEYED LAT: 40° 14' 47.2"



TOP HOLE (NAD 83) N) 638126.1 E) 1652344.5 LAT.) 40°14'47.2" LONG.) 80°37'57.3" DEC. LAT.) 40.246454 DEC. LONG.) 80.632583	BOTTOM HOLE (NAD 83) N) 634371.8 E) 1653861.4 LAT.) 40°14'10.3" LONG.) 80°37'37.1" DEC. LAT.) 40.236202 DEC. LONG.) 80.626981
TOP HOLE (NAD 27) N) 638089.1 E) 1683779.5 LAT.) 40°14'47.0" LONG.) 80°37'58.0" DEC. LAT.) 40.246384 DEC. LONG.) 80.632785	BOTTOM HOLE (NAD 27) N) 634334.8 E) 1685296.3 LAT.) 40°14'10.1" LONG.) 80°37'37.9" DEC. LAT.) 40.236131 DEC. LONG.) 80.627183

HAROLD STARKEY
 34.04 TOTAL ACRES
 LEASE NUMBER
 1-324562-000
 TAX MAP AND PARCEL
 B31-104

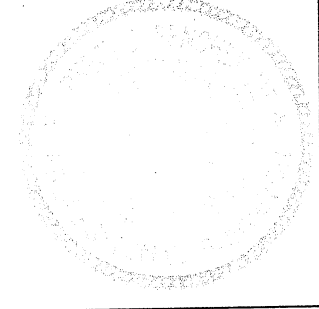


POINT OF TURN (NAD 83) N) 635150.9 E) 1653324.5 LAT.) 40°14'18.0" LONG.) 80°37'44.2" DEC. LAT.) 40.238322 DEC. LONG.) 80.628938	POINT OF TURN (NAD 27) N) 635113.9 E) 1684759.4 LAT.) 40°14'17.7" LONG.) 80°37'44.9" DEC. LAT.) 40.238251 DEC. LONG.) 80.629141
--	--

REFERENCE NOTES
 Boundaries as shown taken from deeds, tax maps and field locations. A full boundary survey is not expressed nor implied. All bearings are based on true north. Ownership taken from public records Brooke County, West Virginia JUNE 2011
 State Plane Coordinates & NAD 83 Lat/Long by differential submeter mapping grade GPS
 Drafted by: E.A.M.

FILE #: CHE 081
 DRAWING #: 1695
 SCALE: 1" = 1000'
 MINIMUM DEGREE OF ACCURACY: 1/200
 PROVEN SOURCE SUBMETER MAPPING OF ELEVATION: GRADE GPS

I, THE UNDERSIGNED, HEREBY CERTIFY THAT THIS PLAT IS CORRECT TO THE BEST OF MY KNOWLEDGE AND BELIEF AND SHOWS ALL THE INFORMATION REQUIRED BY LAW AND THE REGULATIONS ISSUED AND PRESCRIBED BY THE DEPARTMENT OF ENVIRONMENTAL PROTECTION.
 Signed:
 L.L.S. #2124 : Ernest J. Benchek III



(+) DENOTES LOCATION OF WELL ON UNITED STATES TOPOGRAPHIC MAPS
 WVDEP
 OFFICE OF OIL & GAS
 601 57TH STREET
 CHARLESTON, WV 25304

Well Type: Oil Waste Dipsal Production Deep
 Gas Liquid Injection Storage Shallow

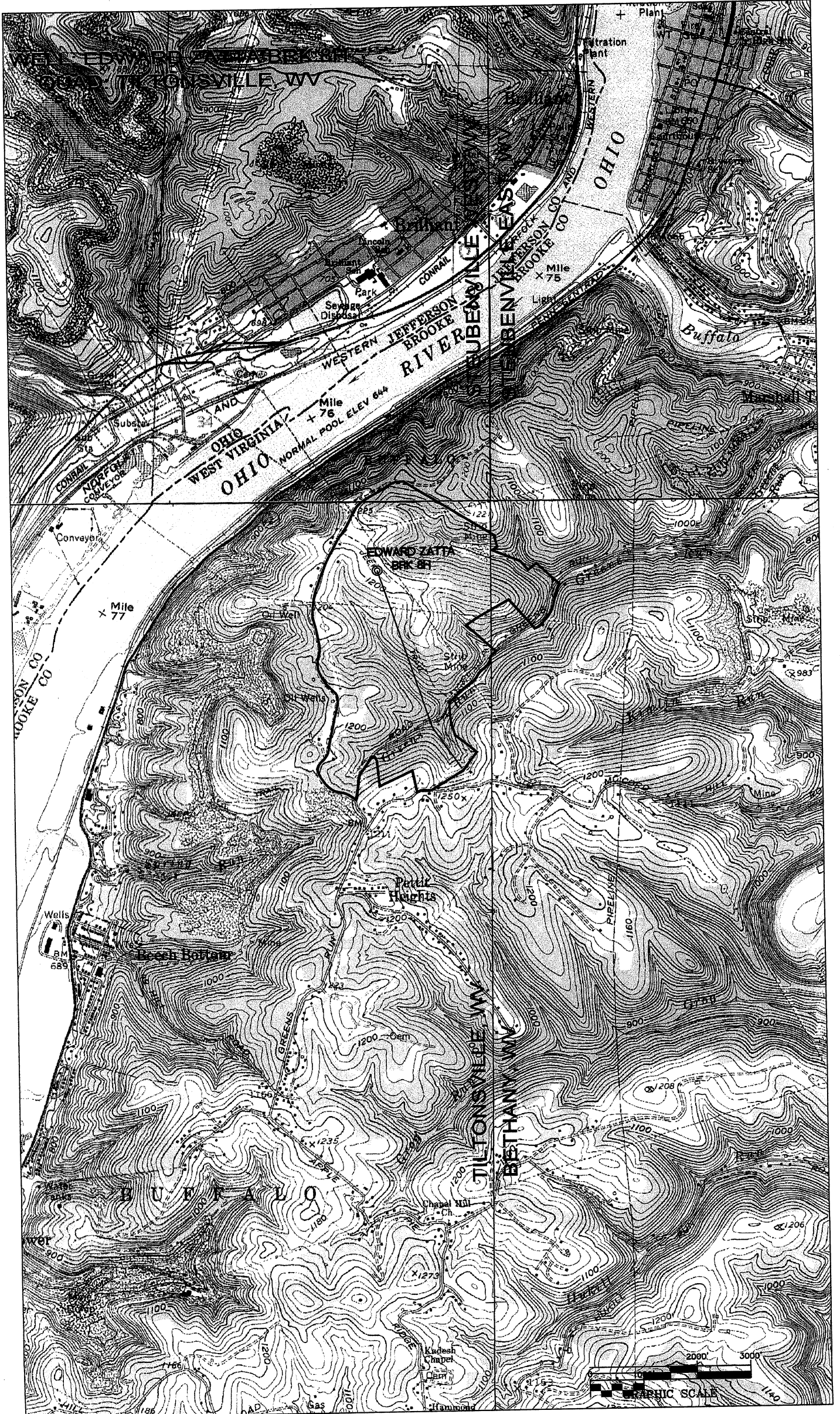
WATERSHED: UPPER OHIO SOUTH ELEVATION : 1,220'
 COUNTY/DISTRICT: BROOKE/BUFFALO QUADRANGLE: TILTONSVILLE
 SURFACE OWNER: EDWARD & SUSAN ZATTA ACREAGE: 183.28 +/-
 OIL & GAS ROYALTY OWNER: EDWARD & SUSAN ZATTA ACREAGE: 273.886 +/-
 LEASE NUMBERS: _____

DRILL CONVERT DRILL DEEPER REDRILL FRACTURE OR STIMULATE
 PLUG OFF FORMATION PERFORATE NEW FORMATION PLUG & ABANDON
 CLEAN OUT & REPLUG OTHER CHANGE (SPECIFY): _____

TARGET FORMATION: MARCELLUS ESTIMATED DEPTH: TVD: 6,000' TMD: 10,069'
 WELL OPERATOR: CHESAPEAKE APPALACHIA, LLC. DESIGNATED AGENT: ERIC GILLESPIE
 ADDRESS: PO BOX 18496 ADDRESS: PO BOX 6070
 CITY: OKLAHOMA CITY STATE: OK ZIP CODE: 73154-0496 CITY: CHARLESTON STATE: WV ZIP CODE: 25301

DATE: SEPTEMBER 1, 2011
 OPERATOR'S WELL #: EDWARD ZATTA BRK 8H
 API WELL #: 47 09 00116H
 STATE COUNTY PERMIT

9-00116H



01/13/2012