

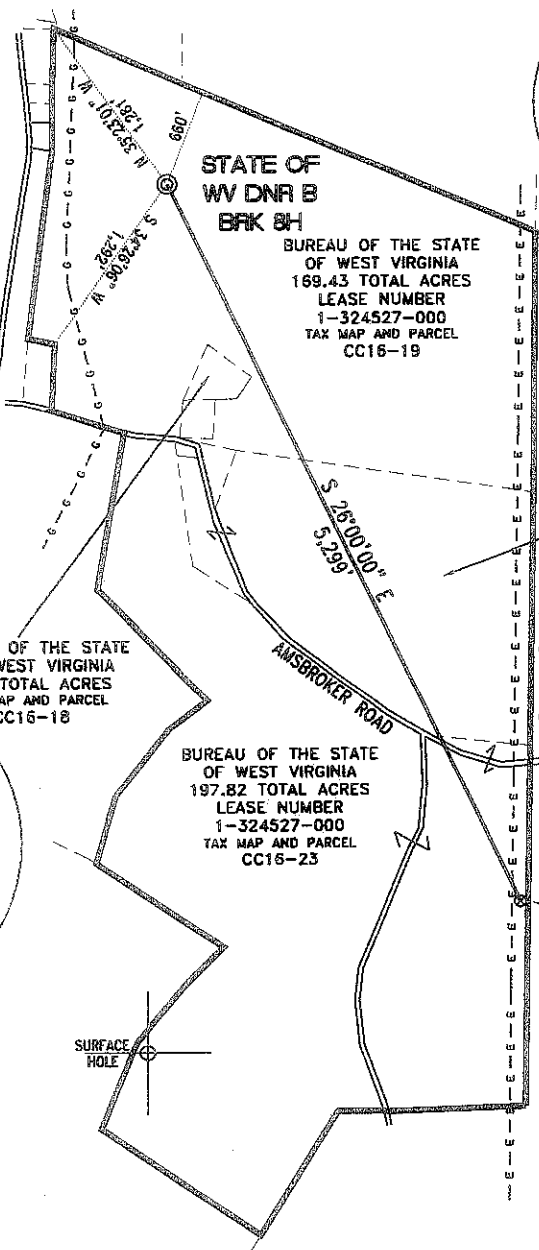
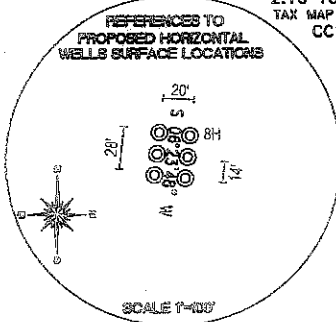
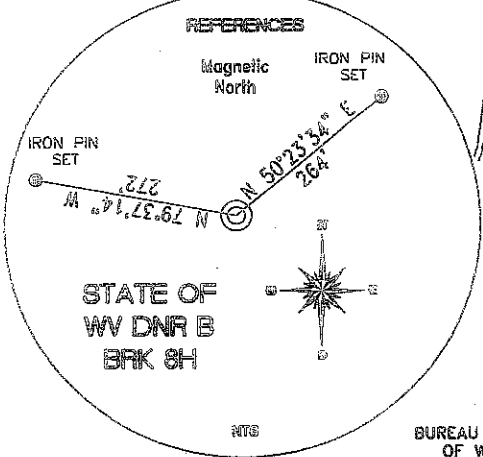
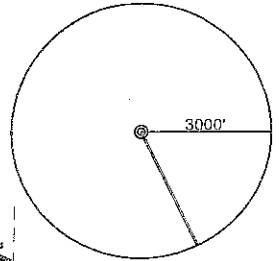
SURFACE HOLE DEC. LONG: 80.527755
SURVEYED LONG: 80° 31' 39.9"

7.740"

Latitude: 40° 22' 30"

Longitude: 80° 30' 00"

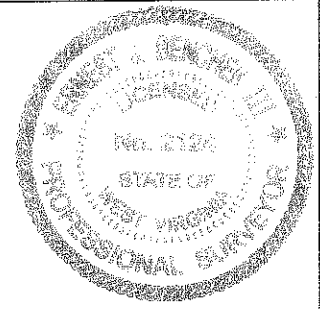
TOP HOLE (HAD 89) N) 672171.1 E) 1681998.7 LAT.) 40°20'27.2" LONG.) 80°31'39.9" DEC. LAT.) 40.340877 DEC. LONG.) 80.527755	BOTTOM HOLE (HAD 89) N) 667408.3 E) 1684321.6 LAT.) 40°19'40.4" LONG.) 80°31'09.2" DEC. LAT.) 40.327877 DEC. LONG.) 80.519229
TOP HOLE (HAD 87) N) 672133.9 E) 1713432.8 LAT.) 40°20'26.9" LONG.) 80°31'40.7" DEC. LAT.) 40.340808 DEC. LONG.) 80.527983	BOTTOM HOLE (HAD 87) N) 667371.1 E) 1715755.7 LAT.) 40°19'40.1" LONG.) 80°31'09.9" DEC. LAT.) 40.327807 DEC. LONG.) 80.519438



REFERENCE NOTES
Boundaries as shown taken from deeds, tax maps and field locations. A full boundary survey is not expressed nor implied. All bearings are based on true north. Ownership taken from public records: Brooke County, West Virginia SEPTEMBER 2011. State Plane Coordinates & NAD 83 Lat/Long by differential submeter mapping grade GPS. Drafted by: E.A.M.

FILE #: CHE 091
DRAWING #: 1820
SCALE: 1" = 1200'
MINIMUM DEGREE OF ACCURACY: 1/200
PROVEN SOURCE: SUBMETER MAPPING
OF ELEVATION: GRADE GPS

I, THE UNDERSIGNED, HEREBY CERTIFY THAT THIS PLAT IS CORRECT TO THE BEST OF MY KNOWLEDGE AND BELIEF AND SHOWS ALL THE INFORMATION REQUIRED BY LAW AND THE REGULATIONS ISSUED AND PRESCRIBED BY THE DEPARTMENT OF ENVIRONMENTAL PROTECTION.
Signed:
L.L.S. #2124 : Ernest J. Benchek III



(+) DENOTES LOCATION OF WELL ON UNITED STATES TOPOGRAPHIC MAPS WYDEF
OFFICE OF OIL & GAS
601 57TH STREET
CHARLESTON, WV 25304

Well Type: Oil Waste Disposal Production Deep
 Gas Liquid Injection Storage Shallow

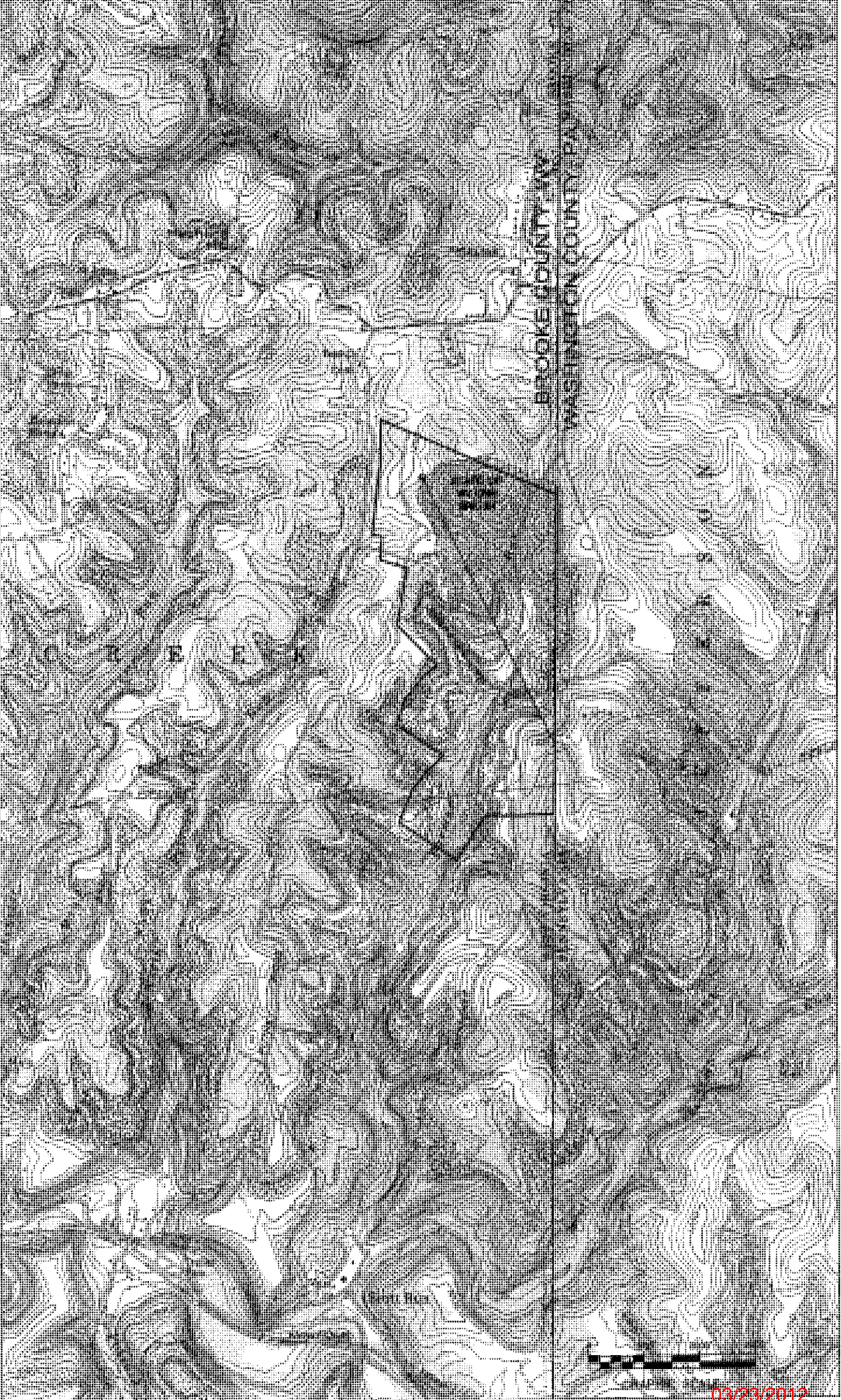
WATERSHED: UPPER OHIO SOUTH ELEVATION: 1,180'
COUNTY/DISTRICT: BROOKE / CROSS CREEK QUADRANGLE: STEUBENVILLE EAST, WV.
SURFACE OWNER: STATE OF WEST VIRGINIA DNR ACREAGE: 169.43 +/-
OIL & GAS ROYALTY OWNER: STARVAGGI INDUSTRIES INC ACREAGE: 441.28 +/-
LEASE NUMBERS:

DRILL CONVERT DRILL DEEPER REDRILL FRACTURE OR STIMULATE
PLUG OFF FORMATION PERFORATE NEW FORMATION PLUG & ABANDON
CLEAN OUT & REPLUG OTHER CHANGE (SPECIFY):

TARGET FORMATION: MARCELLUS ESTIMATED DEPTH: TVD: 6,000' TMD: 11,299'
WELL OPERATOR: CHESAPEAKE APPALACHIA, LLC. DESIGNATED AGENT: ERIC GILLESPIE
ADDRESS: PO BOX 18496 ADDRESS: PO BOX 6070
CITY: OKLAHOMA CITY STATE: OK ZIP CODE: 73154-0496 CITY: CHARLESTON STATE: WV ZIP CODE: 25312

SURFACE HOLE DEC. LAT: 40.340877
SURVEYED LAT: 40° 20' 27.2"

WEST STATE OF WV DEP. OF ENVIRONMENT
CENTRAL SURVEYING DISTRICT



03/23/2012