

SURFACE HOLE DEC. LONG: 80.531793
SURVEYED LONG: 80° 31' 54.5"

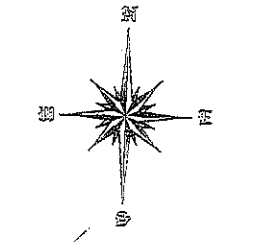
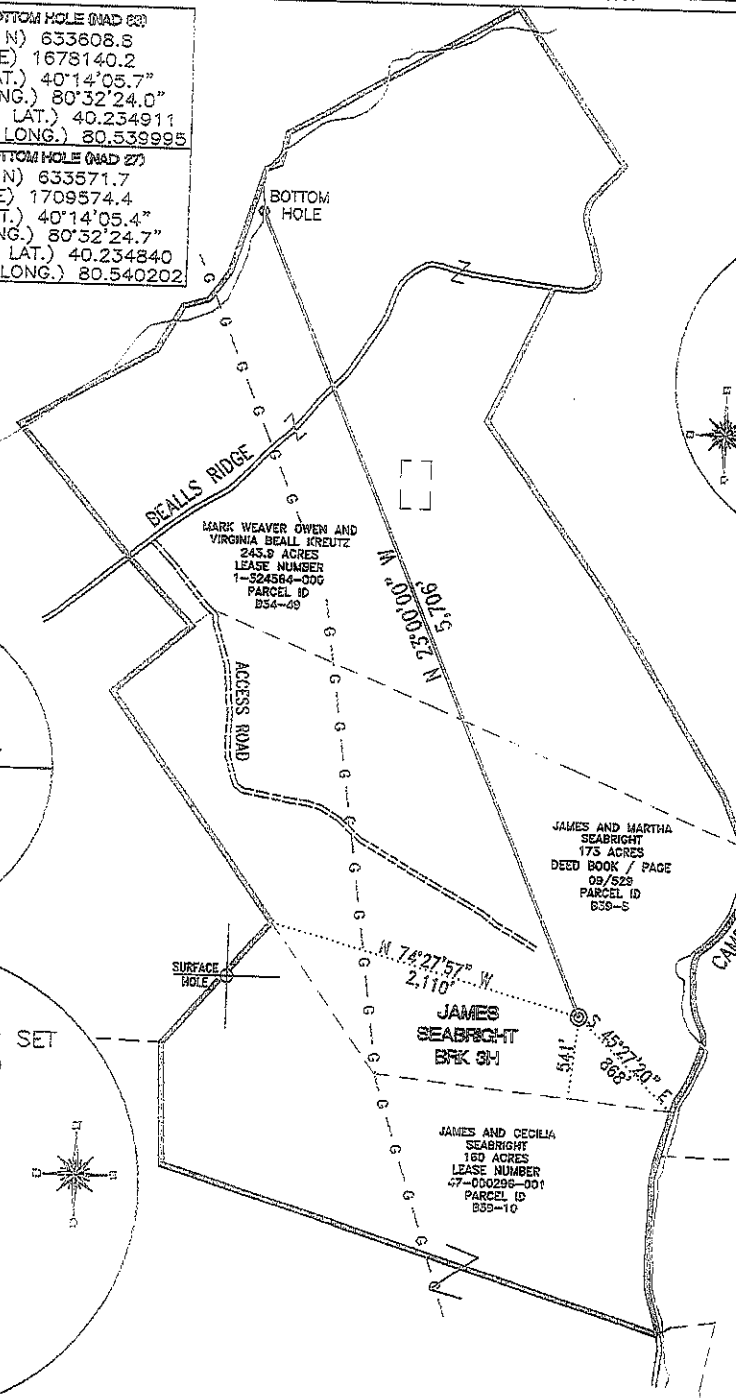
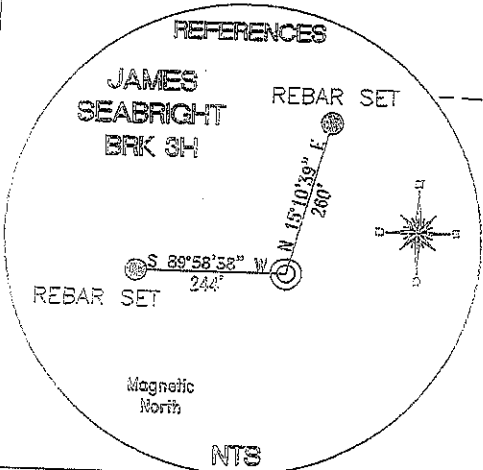
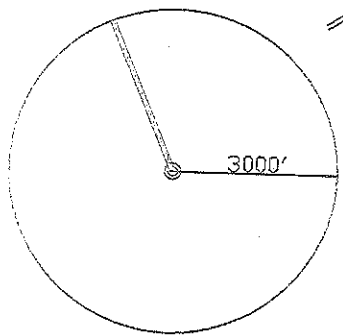
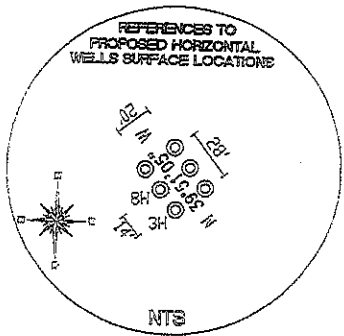
3,890'

Latitude: 40° 15' 00"

Longitude: 80° 30' 00"

TOP HOLE (NAD 83) N) 628358.0 E) 1680369.9 LAT.) 40°13'14.0" LONG.) 80°31'54.5" DEC. LAT.) 40.220564 DEC. LONG.) 80.531793	BOTTOM HOLE (NAD 83) N) 633608.8 E) 1678140.2 LAT.) 40°14'05.7" LONG.) 80°32'24.0" DEC. LAT.) 40.234911 DEC. LONG.) 80.539995
TOP HOLE (NAD 27) N) 628318.8 E) 1711804.1 LAT.) 40°13'13.8" LONG.) 80°31'55.2" DEC. LAT.) 40.220493 DEC. LONG.) 80.532000	BOTTOM HOLE (NAD 27) N) 633571.7 E) 1709574.4 LAT.) 40°14'05.4" LONG.) 80°32'24.7" DEC. LAT.) 40.234840 DEC. LONG.) 80.540202

TOP HOLE (UTM 83) N) 4452343.2 E) 539837.2	BOTTOM HOLE (UTM 83) N) 4453932.1 E) 539131.1
---	--

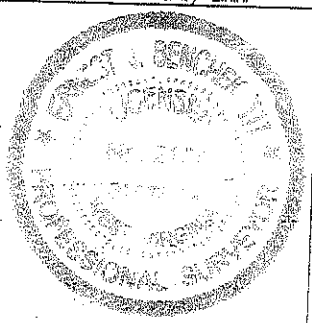


REFERENCE NOTES
 Boundaries as shown taken from deeds, tax maps and field locations. A full boundary survey is not expressed nor implied. All bearings are based on true north. Ownership taken from public records Brooke County, West Virginia DECEMBER 2011
 State Plane Coordinates & NAD 83 Lat/Long by differential submeter mapping grade GPS
 Drafted by: E.A.M.

SURFACE HOLE DEC. LAT: 40.220564
SURVEYED LAT: 40° 13' 14.0"

FILE #: CHE 029
 DRAWING #: 1513
 SCALE: 1" = 1200'
 MINIMUM DEGREE OF ACCURACY: 1/200
 PROVEN SOURCE SUBMETER MAPPING
 OF ELEVATION: GRADE GPS

I, THE UNDERSIGNED, HEREBY CERTIFY THAT THIS PLAT IS CORRECT TO THE BEST OF MY KNOWLEDGE AND BELIEF AND SHOWS ALL THE INFORMATION REQUIRED BY LAW AND THE REGULATIONS ISSUED AND PRESCRIBED BY THE DEPARTMENT OF ENVIRONMENTAL PROTECTION.
 Signed: [Signature]
 L.L.S. #2124 : Ernest J. Benchek III



(+) DENOTES LOCATION OF WELL ON UNITED STATES TOPOGRAPHIC MAPS
 WVDEP
 OFFICE OF OIL & GAS
 601 57TH STREET
 CHARLESTON, WV 25304

Well Type: Oil Waste Disposal Production Deep
 Gas Liquid Injection Storage Shallow

WATERSHED: UPPER OHIO SOUTH ELEVATION: 1,125'

COUNTY/DISTRICT: BROOKE / BUFFALO QUADRANGLE: BETHANY, WV.

SURFACE OWNER: JAMES AND MARTHIA SEABRIGHT ACREAGE: 173.00 +/-

OIL & GAS ROYALTY OWNER: JAMES AND MARTHIA SEABRIGHT ACREAGE: 416.90 +/-

LEASE NUMBERS:

DRILL CONVERT DRILL DEEPER REDRILL FRACTURE OR STIMULATE
 PLUG OFF FORMATION PERFORATE NEW FORMATION PLUG & ABANDON
 CLEAN OUT & REPLUG OTHER CHANGE (SPECIFY):

TARGET FORMATION: MARCELLUS ESTIMATED DEPTH: TVD: 6,045' TMD: 11,547'

WELL OPERATOR: CHESAPEAKE APPALACHIA, LLC. DESIGNATED AGENT: ERIC GILLESPIE
 ADDRESS: PO BOX 18496 ADDRESS: PO BOX 6070
 CITY: OKLAHOMA CITY STATE: OK ZIP CODE: 73154-0496 CITY: CHARLESTON STATE: WV ZIP CODE: 25301

DATE: DECEMBER 14, 2011
 OPERATOR'S WELL #: JAMES SEABRIGHT BRK 3H
 API WELL #: 47 09 STATE COUNTY PERMIT

9-00128H

WELL JAMES SEABRIGHT BRK 3H
QUAD BETHANY, WV

