

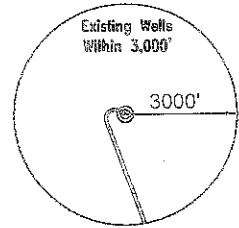
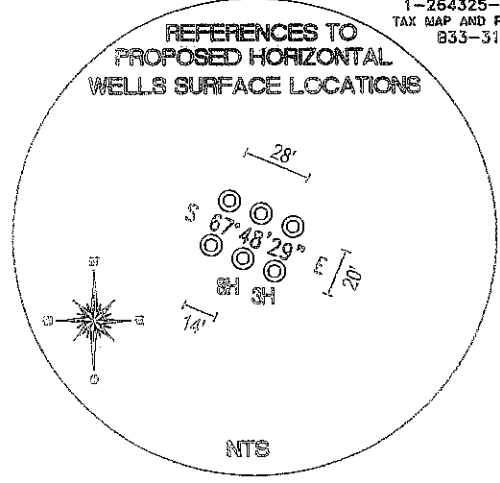
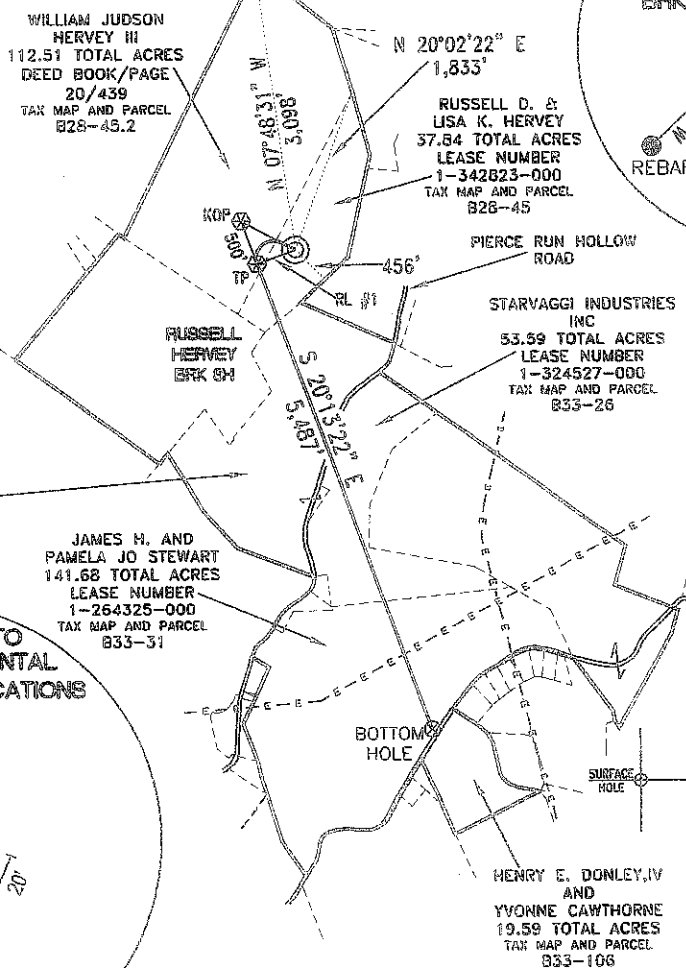
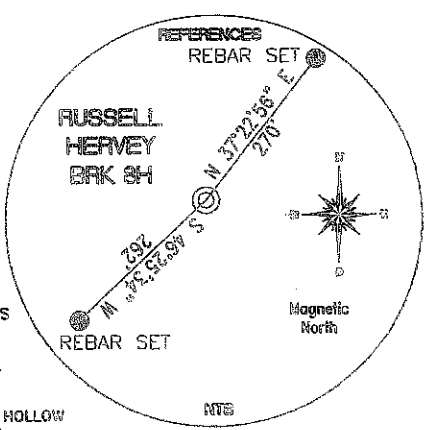
TH (NAD 83) N) 642114.8 E) 1673582.3 LAT.) 40°15'29.2" LONG.) 80°33'24.0" DEC. LAT.) 40.258112 DEC. LONG.) 80.556676	BOTTOM HOLE (NAD 83) N) 636812.5 E) 1675061.5 LAT.) 40°14'37.0" LONG.) 80°33'04.2" DEC. LAT.) 40.243606 DEC. LONG.) 80.551154	TP (NAD 83) N) 641961.0 E) 1673164.9 LAT.) 40°15'27.6" LONG.) 80°33'29.4" DEC. LAT.) 40.257676 DEC. LONG.) 80.558165	KOP (NAD 83) N) 642430.2 E) 1672992.0 LAT.) 40°15'32.3" LONG.) 80°33'31.7" DEC. LAT.) 40.258959 DEC. LONG.) 80.558804
TH (NAD 27) N) 642077.7 E) 1705016.6 LAT.) 40°15'29.0" LONG.) 80°33'24.8" DEC. LAT.) 40.258041 DEC. LONG.) 80.556882	BOTTOM HOLE (NAD 27) N) 636775.4 E) 1706495.8 LAT.) 40°14'36.7" LONG.) 80°33'04.9" DEC. LAT.) 40.243535 DEC. LONG.) 80.551361	TP (NAD 27) N) 641923.9 E) 1704599.2 LAT.) 40°15'27.4" LONG.) 80°33'30.1" DEC. LAT.) 40.257606 DEC. LONG.) 80.558371	KOP (NAD 27) N) 642393.1 E) 1704426.4 LAT.) 40°15'32.0" LONG.) 80°33'32.4" DEC. LAT.) 40.258888 DEC. LONG.) 80.559010

Latitude: 40° 17' 30" (NAD 27)

Longitude: 80° 32' 30" (NAD 27)

TH (NAD 83) N) 4456500.1 E) 537699.1
BOTTOM HOLE (NAD 83) N) 4454892.3 E) 538176.8

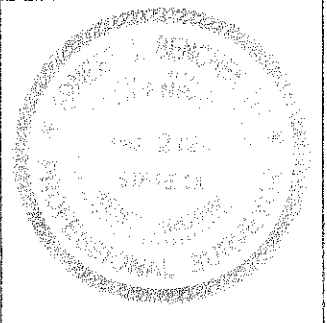
REFERENCE LINES RL #1 S 69°46'38" W 445'
--



REFERENCE NOTES
 Boundaries as shown taken from deeds, tax maps and field locations. A full boundary survey is not expressed nor implied. All bearings are based on true north. Ownership taken from public records Brooke County, West Virginia DECEMBER 2011
 State Plane Coordinates & NAD 83 Lat/Long by differential submeter mapping grade GPS
 Drafted by: E.A.M.

FILE #: CHE 099
 DRAWING #: 1929
 SCALE: 1"=2000'
 MINIMUM DEGREE OF ACCURACY: 1/200
 PROVEN SOURCE OF ELEVATION: SUBMETER MAPPING GRADE GPS

I, THE UNDERSIGNED, HEREBY CERTIFY THAT THIS PLAT IS CORRECT TO THE BEST OF MY KNOWLEDGE AND BELIEF AND SHOWS ALL THE INFORMATION REQUIRED BY LAW AND THE REGULATIONS ISSUED AND PRESCRIBED BY THE DEPARTMENT OF ENVIRONMENTAL PROTECTION.
 Signed: _____
 L.L.S. #2124 : Ernest J. Benchek III



(+) DENOTES LOCATION OF WELL ON UNITED STATES TOPOGRAPHIC MAPS
 WVDEP OFFICE OF OIL & GAS
 601 57TH STREET
 CHARLESTON, WV 25304

Well Type: Oil Waste Disposal Production Deep
 Gas Liquid Injection Storage Shallow

WATERSHED: UPPER OHIO SOUTH ELEVATION: 1,160'

COUNTY/DISTRICT: BROOKE/BUFFALO QUADRANGLE: STUEBENVILLE EAST

SURFACE OWNER: RUSSELL D. & LISA K. HERVEY ACREAGE: 37.84 +/-
 OIL & GAS ROYALTY OWNER: RUSSELL D. & LISA K. HERVEY ACREAGE: 426.85 +/-
 LEASE NUMBERS: _____

DRILL CONVERT DRILL DEEPER REDRILL FRACTURE OR STIMULATE
 PLUG OFF FORMATION PERFORATE NEW FORMATION PLUG & ABANDON
 CLEAN OUT & REPLUG OTHER CHANGE (SPECIFY): _____

TARGET FORMATION: MARCELLUS ESTIMATED DEPTH: TVD: 5,890' TMD: 11,707'
 WELL OPERATOR : CHESAPEAKE APPALACHIA, LLC. DESIGNATED AGENT : ERIC B. GILLESPIE
 ADDRESS: PO BOX 18496 ADDRESS: PO BOX 6070
 CITY: OKLAHOMA CITY STATE: OK ZIP CODE: 73154-0496 CITY: CHARLESTON STATE: WV ZIP CODE: 25362

WELL: RUSSELL HERVEY BRK 8H
QUAD: STUEBENVILLE EAST, WV

