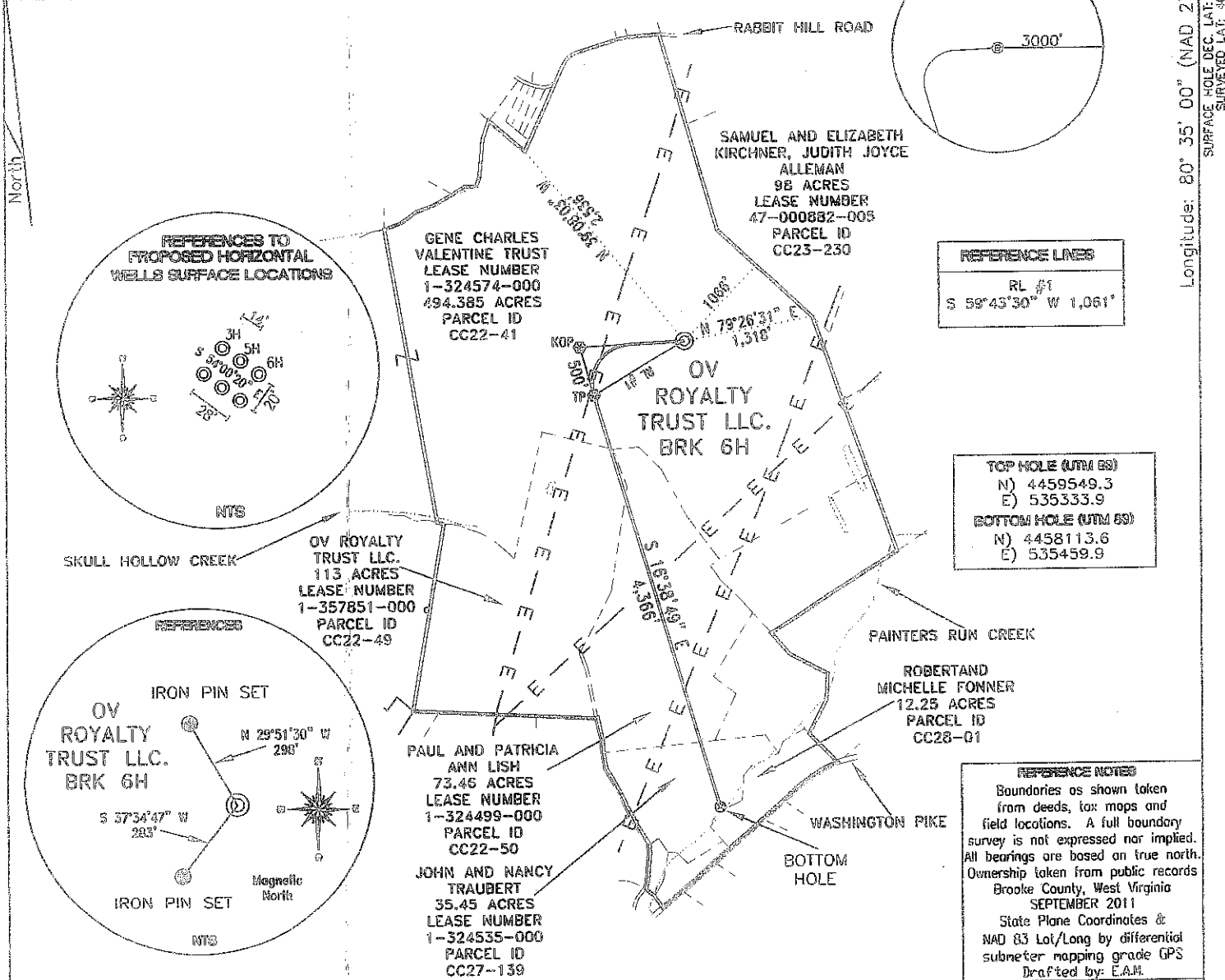


TN (NAD 83) N) 652251.3 E) 1665988.2 LAT.) 40°17'08.5" LONG.) 80°35'03.6" DEC. LAT.) 40.285686 DEC. LONG.) 80.584322	KOP (NAD 83) N) 652195.4 E) 1664928.6 LAT.) 40°17'07.8" LONG.) 80°35'17.2" DEC. LAT.) 40.285498 DEC. LONG.) 80.588117	TP (NAD 83) N) 651716.3 E) 1665071.9 LAT.) 40°17'03.1" LONG.) 80°35'15.3" DEC. LAT.) 40.284188 DEC. LONG.) 80.587583	BOTTOM HOLE (NAD 83) N) 647533.0 E) 1666322.7 LAT.) 40°16'21.9" LONG.) 80°34'58.5" DEC. LAT.) 40.272747 DEC. LONG.) 80.582918
TN (NAD 27) N) 652214.2 E) 1697422.7 LAT.) 40°17'08.2" LONG.) 80°35'04.3" DEC. LAT.) 40.285616 DEC. LONG.) 80.584527	KOP (NAD 27) N) 652158.3 E) 1696363.2 LAT.) 40°17'07.5" LONG.) 80°35'18.0" DEC. LAT.) 40.285428 DEC. LONG.) 80.588322	TP (NAD 27) N) 651679.3 E) 1696506.4 LAT.) 40°17'02.8" LONG.) 80°35'16.0" DEC. LAT.) 40.284118 DEC. LONG.) 80.587787	BOTTOM HOLE (NAD 27) N) 647495.9 E) 1697757.2 LAT.) 40°16'21.6" LONG.) 80°34'59.2" DEC. LAT.) 40.272676 DEC. LONG.) 80.583123

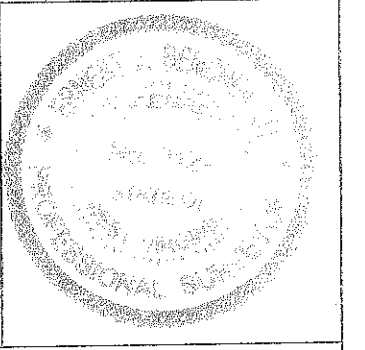
Latitude: 40° 17' 30" (NAD 27)  
 Longitude: 80° 35' 00" (NAD 27)  
 SURFACE HOLE DEC. LAT: 40.285616 SURVEYED LAT: 40° 17' 08.2"  
 SURFACE HOLE DEC. LONG: 80.584527 SURVEYED LONG: 80° 35' 04.3"



FILE #: CHE 054  
 DRAWING #: 1821  
 SCALE: 1"=1600'  
 MINIMUM DEGREE OF ACCURACY: 1/200  
 PROVEN SOURCE SUBMETER MAPPING OF ELEVATION: GRADE GPS

I, THE UNDERSIGNED, HEREBY CERTIFY THAT THIS PLAT IS CORRECT TO THE BEST OF MY KNOWLEDGE AND BELIEF AND SHOWS ALL THE INFORMATION REQUIRED BY LAW AND THE REGULATIONS ISSUED AND PRESCRIBED BY THE DEPARTMENT OF ENVIRONMENTAL PROTECTION.

Signed: \_\_\_\_\_  
 L.L.S. #2124 : Ernest J. Benchek III



(+) DENOTES LOCATION OF WELL ON UNITED STATES TOPOGRAPHIC MAPS  
 WVDEP  
 OFFICE OF OIL & GAS  
 601 57TH STREET  
 CHARLESTON, WV 25304

Well Type:  Oil  Waste Disposal  Production  Deep  
 Gas  Liquid Injection  Storage  Shallow

WATERSHED: UPPER OHIO SOUTH ELEVATION: 1,185'

COUNTY/DISTRICT: BROOKE/CROSS CREEK QUADRANGLE: STUEBENVILLE EAST WV.

SURFACE OWNER: GENE CHARLES VALENTINE TRUST ACREAGE: 494.385 +/-

OIL & GAS ROYALTY OWNER: GENE CHARLES VALENTINE TRUST ACREAGE: 716.295 +/-

LEASE NUMBERS: \_\_\_\_\_

DRILL  CONVERT  DRILL DEEPER  REDRILL  FRACTURE OR STIMULATE   
 PLUG OFF FORMATION  PERFORATE NEW FORMATION  PLUG & ABANDON   
 CLEAN OUT & REPLUG  OTHER CHANGE  (SPECIFY): \_\_\_\_\_

TARGET FORMATION: MARCELLUS ESTIMATED DEPTH: TVD: 5,600' TMD: 11,804'

WELL OPERATOR: CHESAPEAKE APPALACHIA, LLC. DESIGNATED AGENT: ERIC B. GILLESPIE

ADDRESS: PO BOX 18496 ADDRESS: PO BOX 6070

CITY: OKLAHOMA CITY STATE: OK ZIP CODE: 73154-0496 CITY: CHARLESTON STATE: WV ZIP CODE: 25362

07/20/2012

