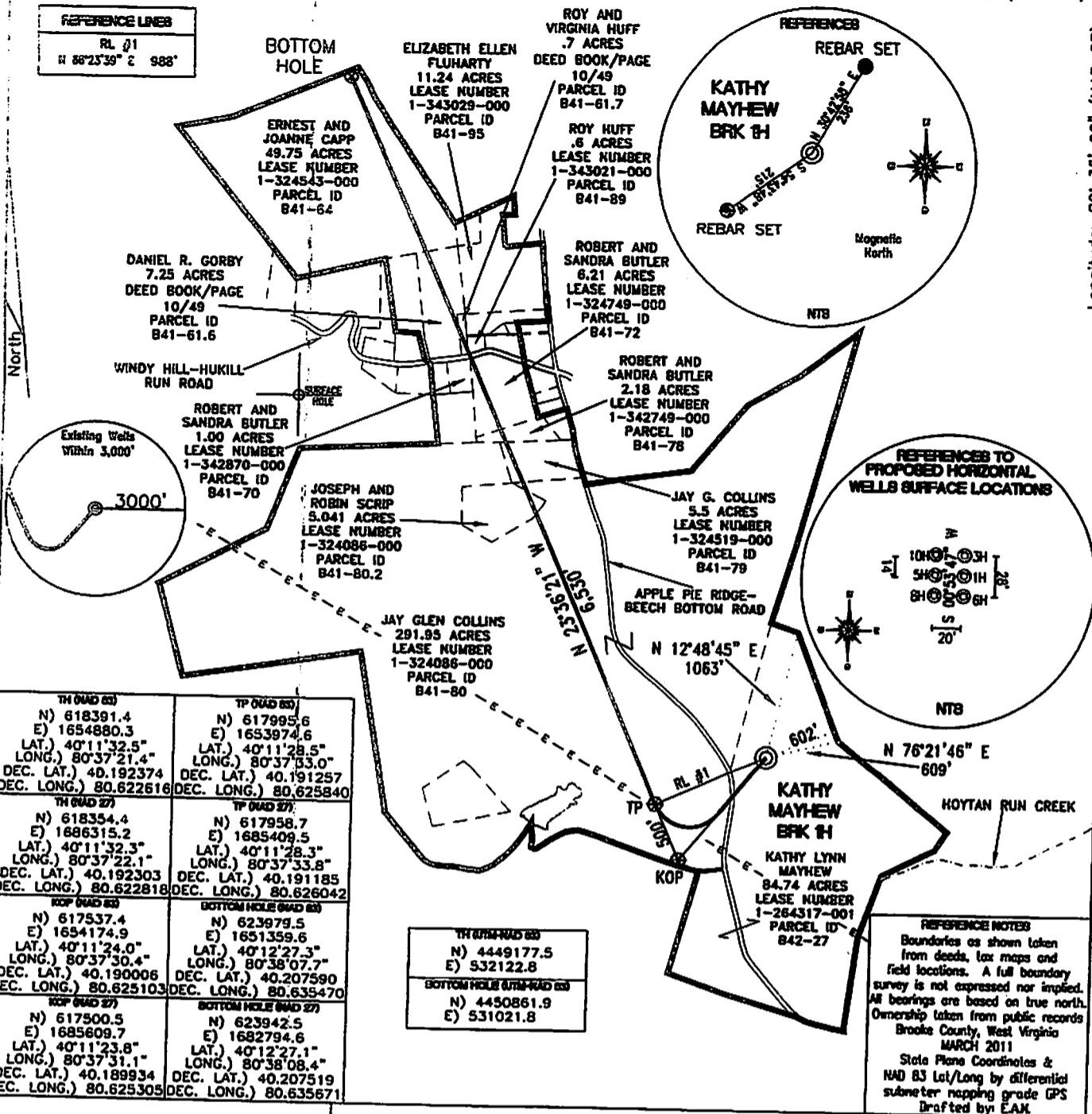


REFERENCE LINES
RL #1
N 88°23'39" E 988'



TH (NAD 83) N) 618391.4 E) 1654880.3 LAT.) 40°11'32.5" LONG.) 80°37'21.4" DEC. LAT.) 40.192374 DEC. LONG.) 80.622616	TP (NAD 83) N) 617995.6 E) 1653974.6 LAT.) 40°11'28.5" LONG.) 80°37'53.0" DEC. LAT.) 40.191257 DEC. LONG.) 80.625840
TH (NAD 27) N) 618354.4 E) 1886315.2 LAT.) 40°11'32.3" LONG.) 80°37'22.1" DEC. LAT.) 40.192303 DEC. LONG.) 80.622818	TP (NAD 27) N) 617958.7 E) 1685409.5 LAT.) 40°11'28.3" LONG.) 80°37'33.8" DEC. LAT.) 40.191185 DEC. LONG.) 80.626042
KOP (NAD 83) N) 617537.4 E) 1654174.9 LAT.) 40°11'24.0" LONG.) 80°37'30.4" DEC. LAT.) 40.190006 DEC. LONG.) 80.625103	BOTTOM HOLE (NAD 83) N) 623979.5 E) 1651359.6 LAT.) 40°12'27.3" LONG.) 80°38'07.7" DEC. LAT.) 40.207590 DEC. LONG.) 80.635470
KOP (NAD 27) N) 617500.5 E) 1685609.7 LAT.) 40°11'23.8" LONG.) 80°37'31.1" DEC. LAT.) 40.189934 DEC. LONG.) 80.625305	BOTTOM HOLE (NAD 27) N) 623942.5 E) 1682794.6 LAT.) 40°12'27.1" LONG.) 80°38'08.4" DEC. LAT.) 40.207519 DEC. LONG.) 80.635671

TH (NAD 83)
N) 4449177.5
E) 532122.8

BOTTOM HOLE (NAD 83)
N) 4450861.9
E) 531021.8

REFERENCE NOTES
Boundaries as shown taken from deeds, tax maps and field locations. A full boundary survey is not expressed nor implied. All bearings are based on true north. Ownership taken from public records Brooke County, West Virginia MARCH 2011
State Plane Coordinates & NAD 83 Lat/Long by differential submeter mapping grade GPS
Drafted by: EAJ

FILE #: CHE 059
DRAWING #: 1880
SCALE: 1"=1200'
MINIMUM DEGREE OF ACCURACY: 1/200
PROVEN SOURCE SUBMETER MAPPING OF ELEVATION: GRADE GPS

I, THE UNDERSIGNED, HEREBY CERTIFY THAT THIS PLAT IS CORRECT TO THE BEST OF MY KNOWLEDGE AND BELIEF AND SHOWS ALL THE INFORMATION REQUIRED BY LAW AND THE REGULATIONS ISSUED AND PRESCRIBED BY THE DEPARTMENT OF ENVIRONMENTAL PROTECTION.
Signed: _____
L.L.S. #2124 : Ernest J. Benchek III



(+) DENOTES LOCATION OF WELL ON UNITED STATES TOPOGRAPHIC MAPS WVDEP
OFFICE OF OIL & GAS
601 5TH STREET
CHARLESTON, WV 25304
Well Type: Oil Waste Disposal Production Deep Gas Liquid Injection Storage Shallow
WATERSHED: UPPER OHIO SOUTH
COUNTY/DISTRICT: BROOKE/BUFFALO
SURFACE OWNER: KATHY LYNN MAYHEW
OIL & GAS ROYALTY OWNER: KATHY LYNN MAYHEW
LEASE NUMBERS:

DATE: FEBRUARY 7, 2012
OPERATOR'S WELL #: KATHY MAYHEW BRK 1H
API WELL #: 47 09
STATE COUNTY PERMIT
CANCELLED 9-0139 H6A
ELEVATION: 1,280'
QUADRANGLE: BETHANY WV.
ACREAGE: 84.74 +/-
ACREAGE: 454.921 +/-
DRILL CONVERT DRILL DEEPER REDRILL FRACTURE OR STIMULATE
PLUG OFF FORMATION PERFORATE NEW FORMATION PLUG & ABANDON
CLEAN OUT & REPLUG OTHER CHANGE (SPECIFY):
TARGET FORMATION: MARCELLUS
WELL OPERATOR : CHESAPEAKE APPALACHIA, L.C.
ADDRESS: PO BOX 18496
CITY: OKLAHOMA CITY STATE: OK ZIP CODE: 73154-0496
ESTIMATED DEPTH: TVD: 6,024' TMD: 12,989'
DESIGNATED AGENT : ERIC B. GILLESPIE
ADDRESS: PO Box 6070
CITY: CHARLESTON STATE: WV ZIP CODE: 25362