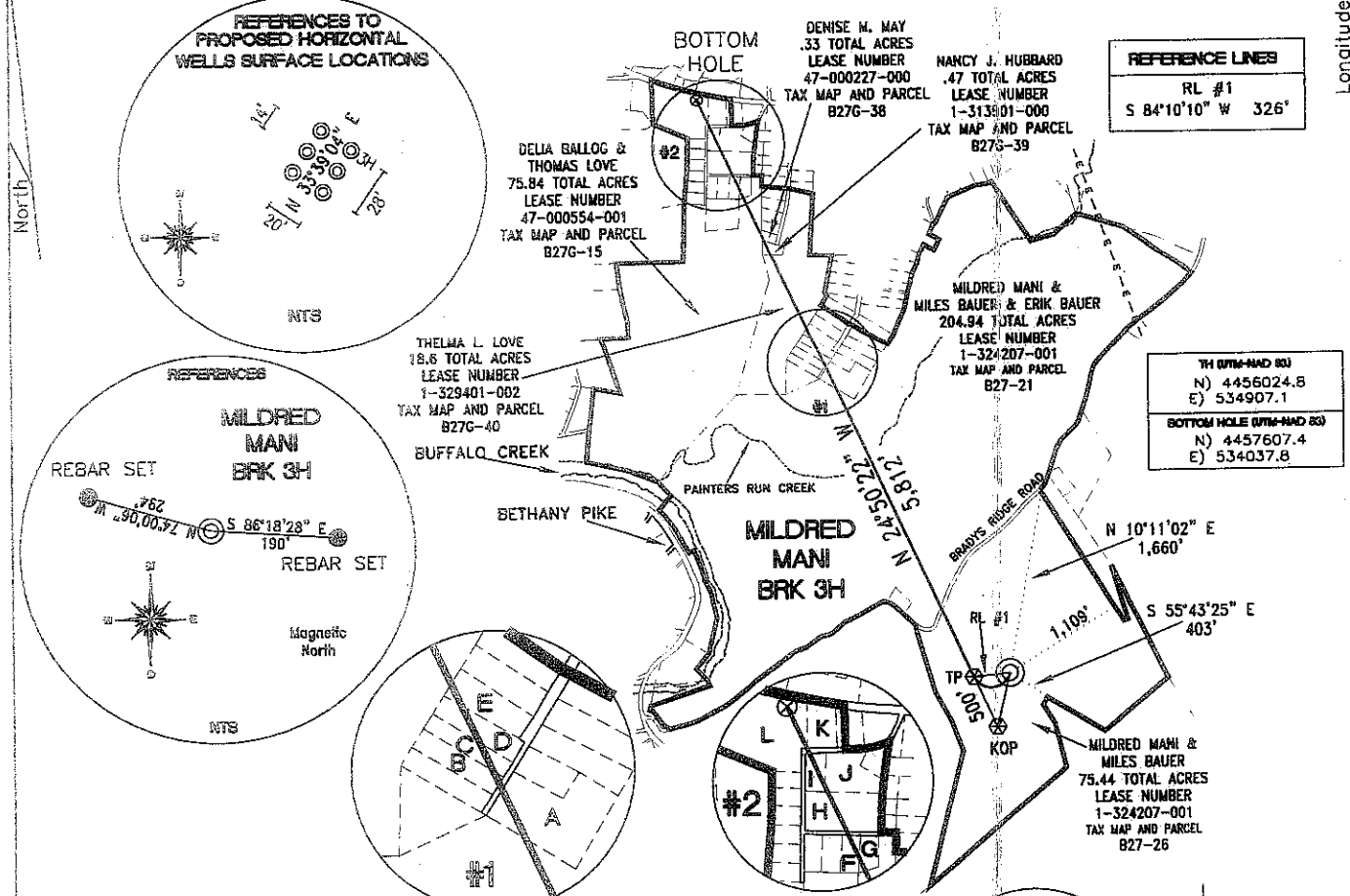


SURFACE HOLE DEC. LONG: 80.589739
 SURVEYED LONG: 80° 35' 23.1" Longitude: 80° 35' 00" (NAD 27)

TH (NAD 83)	BOTTOM HOLE (NAD 83)	TP (NAD 83)	KOP (NAD 83)
N) 640708.7 E) 1664393.6 LAT.) 40°15'14.2" LONG.) 80°35'22.3" DEC. LAT.) 40.253951 DEC. LONG.) 80.589535	N) 645949.9 E) 1661628.1 LAT.) 40°16'05.7" LONG.) 80°35'58.8" DEC. LAT.) 40.268245 DEC. LONG.) 80.599672	N) 640675.6 E) 1664069.6 LAT.) 40°15'13.9" LONG.) 80°35'26.5" DEC. LAT.) 40.253850 DEC. LONG.) 80.590694	N) 640221.9 E) 1664279.6 LAT.) 40°15'09.4" LONG.) 80°35'23.7" DEC. LAT.) 40.252611 DEC. LONG.) 80.589922
TH (NAD 27)	BOTTOM HOLE (NAD 27)	TP (NAD 27)	KOP (NAD 27)
N) 640671.7 E) 1695828.2 LAT.) 40°15'14.0" LONG.) 80°35'23.1" DEC. LAT.) 40.253881 DEC. LONG.) 80.589739	N) 645912.9 E) 1693062.7 LAT.) 40°16'05.4" LONG.) 80°35'59.6" DEC. LAT.) 40.268174 DEC. LONG.) 80.599875	N) 640638.6 E) 1695504.2 LAT.) 40°15'13.6" LONG.) 80°35'27.2" DEC. LAT.) 40.253779 DEC. LONG.) 80.590898	N) 640184.8 E) 1695714.2 LAT.) 40°15'09.1" LONG.) 80°35'24.5" DEC. LAT.) 40.252541 DEC. LONG.) 80.590126

REFERENCE NOTES
 Boundaries as shown taken from deeds, tax maps and field locations. A full boundary survey is not expressed nor implied. All bearings are based on true north. Ownership taken from public records Brooke County, West Virginia NOVEMBER 2011
 State Plane Coordinates & NAD 83 Lat/Long by differential submeter mapping grade GPS
 Drafted by: E.A.M.



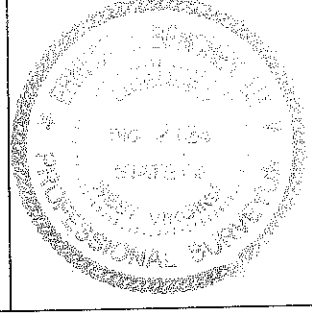
PROPERTY INDEX

A	KYANKO KEYSTONE INHERITANCE TRUST, B27L-40, 1 ACRES, LEASE NUMBER 1-313935-000
B	JOHN S. & BEVERLY A. GEORGE, B27L-37, .55 ACRES, LEASE NUMBER 1-329163-000
C	JOHN S. & BEVERLY A. GEORGE, B27L-36, .55 ACRES, LEASE NUMBER 1-329154-000
D	JOHN S. & BEVERLY A. GEORGE, B27L-35, .55 ACRES, LEASE NUMBER 1-329151-000
E	MCDANIEL KEYSTONE TRUST AGREEMENT, B27L-34, .69 ACRES, LEASE NUMBER 1-329435-000
F	RALPH L. & MARLENE HANLON, B27G-17, .38 ACRES, LEASE NUMBER 47-000547-000
G	RALPH L. & MARLENE HANLON, B27G-16, .38 ACRES, LEASE NUMBER 47-000547-000
H	HARRY D. & JUDI M. ICKES, B27G-20, 1.84 ACRES, LEASE NUMBER 47-000514-000
I	NATHANIEL J. & AMBER M. RAY, B27G-21.1, .512 ACRES, LEASE NUMBER 47-000525-000
J	HARRY D. & JUDI M. ICKES, B27G-21, 1.29 ACRES, LEASE NUMBER 47-000514-000
K	RICHARD FOSTER MCCREARY, B27G-3, .81 ACRES, LEASE NUMBER 47-000290-000
L	DAVID MYRON & NANCY LEE HUBBARD, B27G-1, 5.021 ACRES, LEASE NUMBER 1-325793-000

FILE #: CHE 045
 DRAWING #: 1910
 SCALE: 1"=1600'
 MINIMUM DEGREE OF ACCURACY: 1/200
 PROVEN SOURCE: SUBMETER MAPPING
 OF ELEVATION: GRADE GPS

I, THE UNDERSIGNED, HEREBY CERTIFY THAT THIS PLAT IS CORRECT TO THE BEST OF MY KNOWLEDGE AND BELIEF AND SHOWS ALL THE INFORMATION REQUIRED BY LAW AND THE REGULATIONS ISSUED AND PRESCRIBED BY THE DEPARTMENT OF ENVIRONMENTAL PROTECTION.

Signed: *[Signature]*
 L.L.S. #2124 : Ernest J. Benchek III



(+) DENOTES LOCATION OF WELL ON UNITED STATES TOPOGRAPHIC MAPS WVDEP
 OFFICE OF OIL & GAS
 601 57TH STREET
 CHARLESTON, WV 25304

Well Type: Oil Waste Diposal Production Deep
 Gas Liquid Injection Storage Shallow

WATERSHED: UPPER OHIO SOUTH ELEVATION: 1,120'

COUNTY/DISTRICT: BROOKE/BUFFALO QUADRANGLE: STUEBENVILLE EAST WV.

SURFACE OWNER: MILDRED MANI AND MILES BAUER ACREAGE: 75.44 +/-
 OIL & GAS ROYALTY OWNER: MILDRED MANI AND MILES BAUER ACREAGE: 389.193 +/-
 LEASE NUMBERS:

DRILL CONVERT DRILL DEEPER REDRILL FRACTURE OR STIMULATE
 PLUG OFF FORMATION PERFORATE NEW FORMATION PLUG & ABANDON
 CLEAN OUT & REPLUG OTHER CHANGE (SPECIFY):

TARGET FORMATION: MARCELLUS ESTIMATED DEPTH: TVD: 5,710' TMD: 11,470'
 WELL OPERATOR: CHESAPEAKE APPALACHIA, LLC. DESIGNATED AGENT: ERIC B. GILLESPIE
 ADDRESS: PO BOX 18496 ADDRESS: Po Box 6070
 CITY: OKLAHOMA CITY STATE: OK ZIP CODE: 73154-0496 CITY: CHARLESTON STATE: WV ZIP: 08008/2012

DATE: FEBRUARY 14, 2012
 OPERATOR'S WELL #: MILDRED MANI BRK 3H
 API WELL #: 47 09 0143166A
 STATE COUNTY PERMIT

Longitude: 80° 35' 00" (NAD 27)

SURFACE HOLE DEC. LAT: 40.253881
 SURVEYED LAT: 40° 15' 14.0"

WELL: MILDRED MAN BRK 3H
QUAD: STUBBENVILLE EAST



RECEIVED
Office of Oil & Gas

MAR 15 2012

Department of
Environmental Protection



08/03/2012