

SURFACE HOLE DEC. LONG: 80.577929
SURVEYED LONG: 80° 34' 40.5"

10,120'

Latitude: 40° 22' 30" (NAD 27)

Longitude: 80° 32' 30" (NAD 27)

SURFACE HOLE DEC. LAT: 40° 22' 17.2"
SURVEYED LAT: 40° 22' 17.2"

TOP HOLE (NAD 83)
N) 683496.3
E) 1668204.0
LAT.) 40°22'17.5"
LONG.) 80°34'39.8"
DEC. LAT.) 40.371517
DEC. LONG.) 80.577723

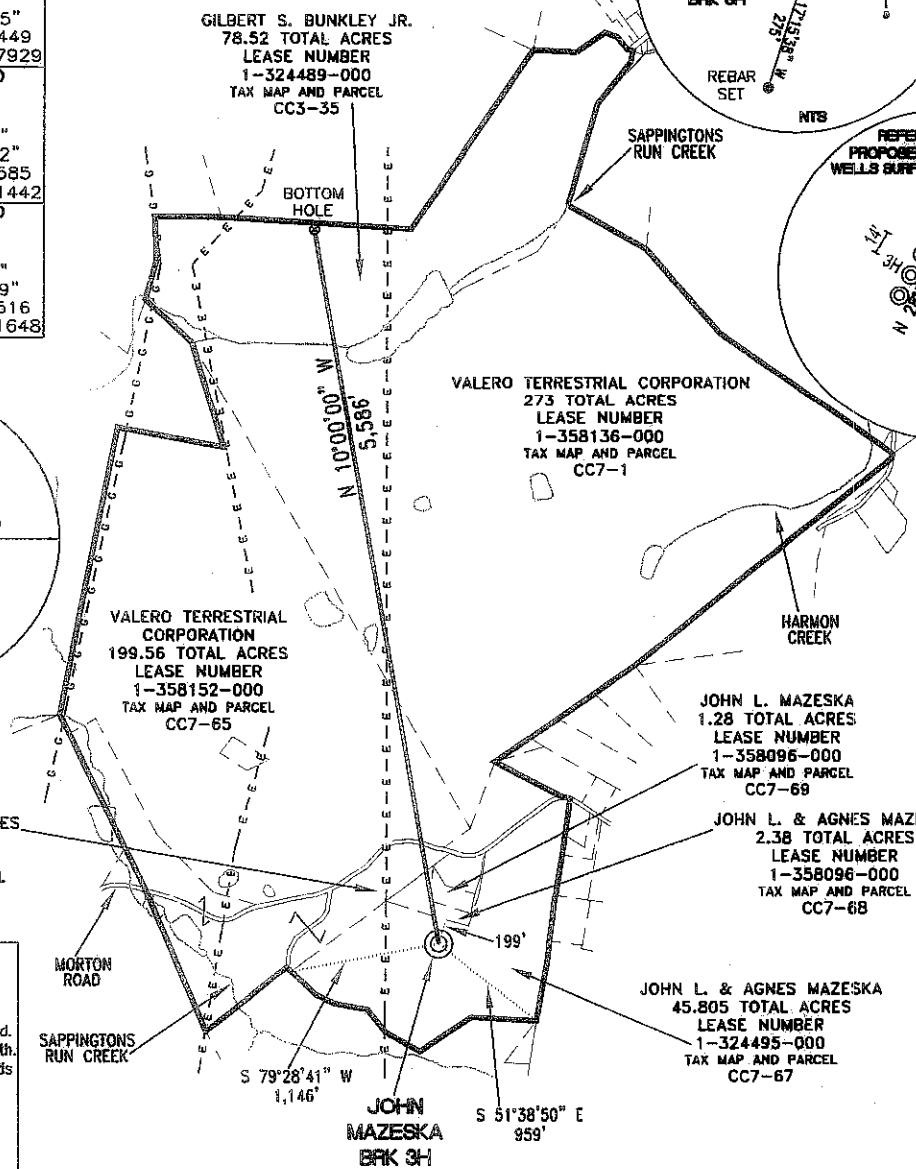
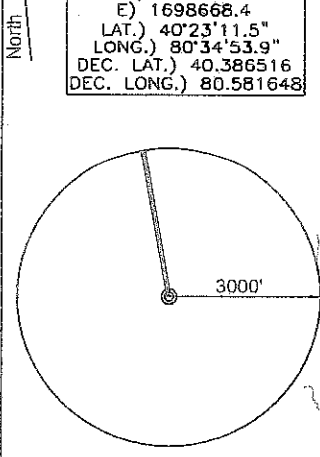
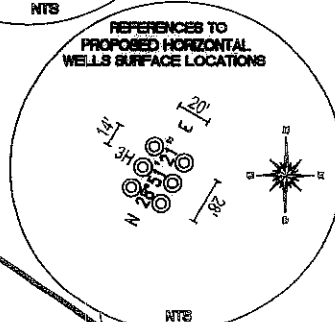
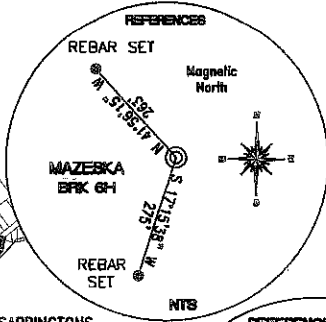
TOP HOLE (NAD 27)
N) 683459.3
E) 1699638.4
LAT.) 40°22'17.2"
LONG.) 80°34'40.5"
DEC. LAT.) 40.371449
DEC. LONG.) 80.577929

BOTTOM HOLE (NAD 83)
N) 688997.7
E) 1667233.9
LAT.) 40°23'11.7"
LONG.) 80°34'53.2"
DEC. LAT.) 40.386585
DEC. LONG.) 80.581442

BOTTOM HOLE (NAD 27)
N) 688960.6
E) 1698668.4
LAT.) 40°23'11.5"
LONG.) 80°34'53.9"
DEC. LAT.) 40.386516
DEC. LONG.) 80.581648

TH (UTM-NAD 83)
N) 4469079.0
E) 535849.3

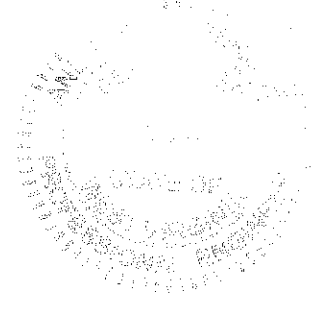
BOTTOM HOLE (UTM-NAD 83)
N) 4470749.9
E) 535525.7



REFERENCE NOTES
Boundaries as shown taken from deeds, tax maps and field locations. A full boundary survey is not expressed nor implied. All bearings are based on true north. Ownership taken from public records Brooke County, West Virginia JULY 2012
State Plane Coordinates & NAD 83 Lat/Long by differential submeter mapping grade GPS
Drafted by: E.A.M.

FILE #: CHE 101
DRAWING #: 2085
SCALE: 1" = 1400'
MINIMUM DEGREE OF ACCURACY: 1/200
PROVEN SOURCE: SUBMETER MAPPING
OF ELEVATION: GRADE GPS

I, THE UNDERSIGNED, HEREBY CERTIFY THAT THIS PLAT IS CORRECT TO THE BEST OF MY KNOWLEDGE AND BELIEF AND SHOWS ALL THE INFORMATION REQUIRED BY LAW AND THE REGULATIONS ISSUED AND PRESCRIBED BY THE DEPARTMENT OF ENVIRONMENTAL PROTECTION.
Signed: *Andrew E. Benchek*
R.P.E. #18444 : Andrew E. Benchek



(+) DENOTES LOCATION OF WELL ON UNITED STATES TOPOGRAPHIC MAPS WYDEP
OFFICE OF OIL & GAS
601 57TH STREET
CHARLESTON, WV 25304

DATE: JULY 11, 2012
OPERATOR'S WELL #: JOHN MAZESKA BRK 3H
API WELL #: 47 09 00153 H6A
STATE COUNTY PERMIT

Well Type: Oil Waste Diposal Production Deep
 Gas Liquid Injection Storage Shallow

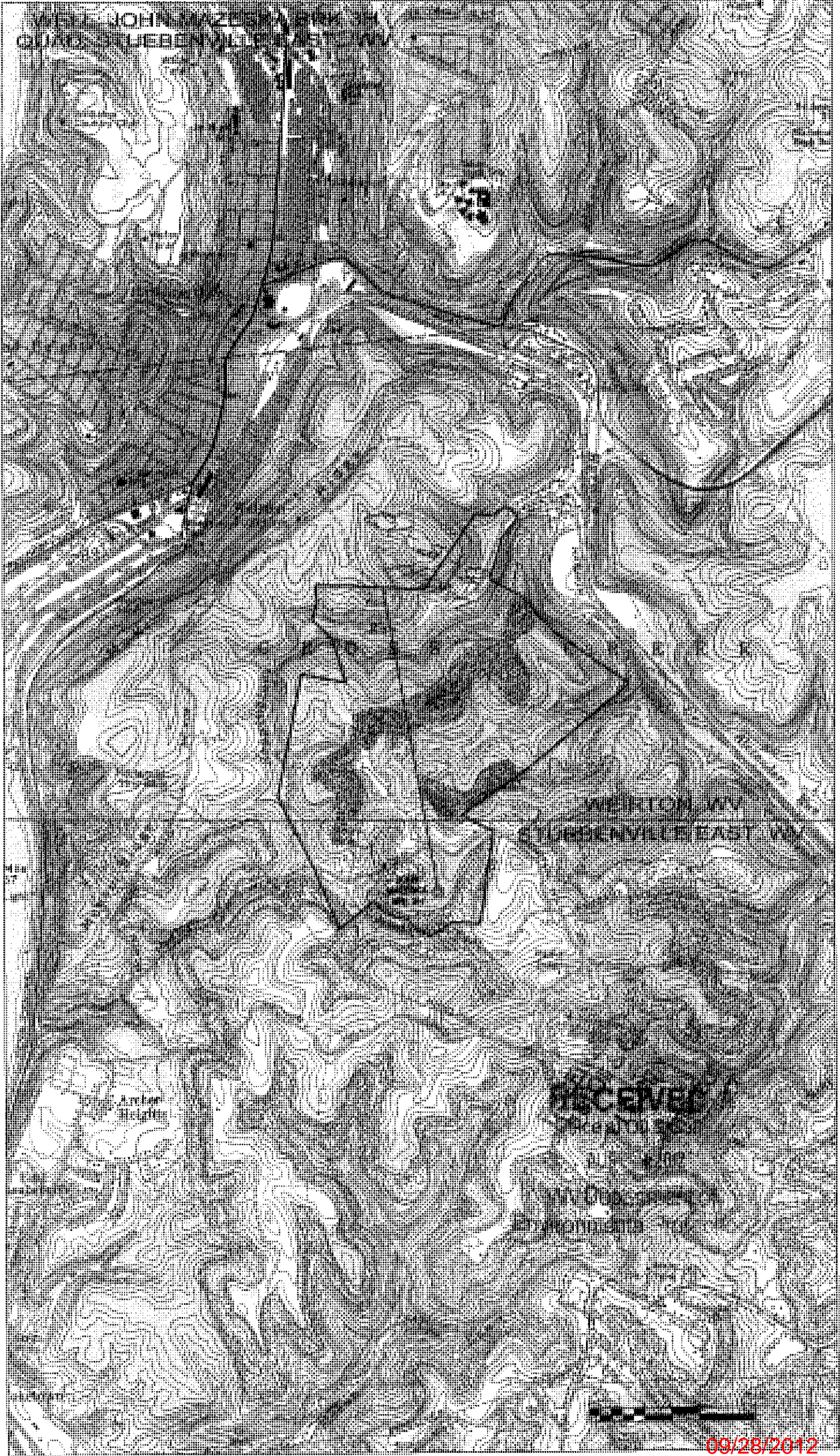
WATERSHED: UPPER OHIO SOUTH ELEVATION: 1,210'
COUNTY/DISTRICT: BROOKE / CROSS CREEK QUADRANGLE: STUEBENVILLE EAST, WV.
SURFACE OWNER: JOHN L. & AGNES MAZESKA ACREAGE: 45.805 +/-
OIL & GAS ROYALTY OWNER: JOHN L. & AGNES MAZESKA ACREAGE: 633.981 +/-
LEASE NUMBERS:

DRILL CONVERT DRILL DEEPER REDRILL FRACTURE OR STIMULATE
PLUG OFF FORMATION PERFORATE NEW FORMATION PLUG & ABANDON
CLEAN OUT & REPLUG OTHER CHANGE (SPECIFY):

TARGET FORMATION: MARCELLUS ESTIMATED DEPTH: TVD: 5,450' TMD: 10,831'
WELL OPERATOR: CHESAPEAKE APPALACHIA, LLC. DESIGNATED AGENT: ERIC GILLESPIE
ADDRESS: PO BOX 18496 ADDRESS: PO BOX 6070
CITY: OKLAHOMA CITY STATE: OK ZIP CODE: 73154-0496 CITY: CHARLESTON STATE: WV ZIP CODE: 25302

08/28/2012

MR. JOHN W. ZEB
QUINN LEBENWITZ



RECEIVED