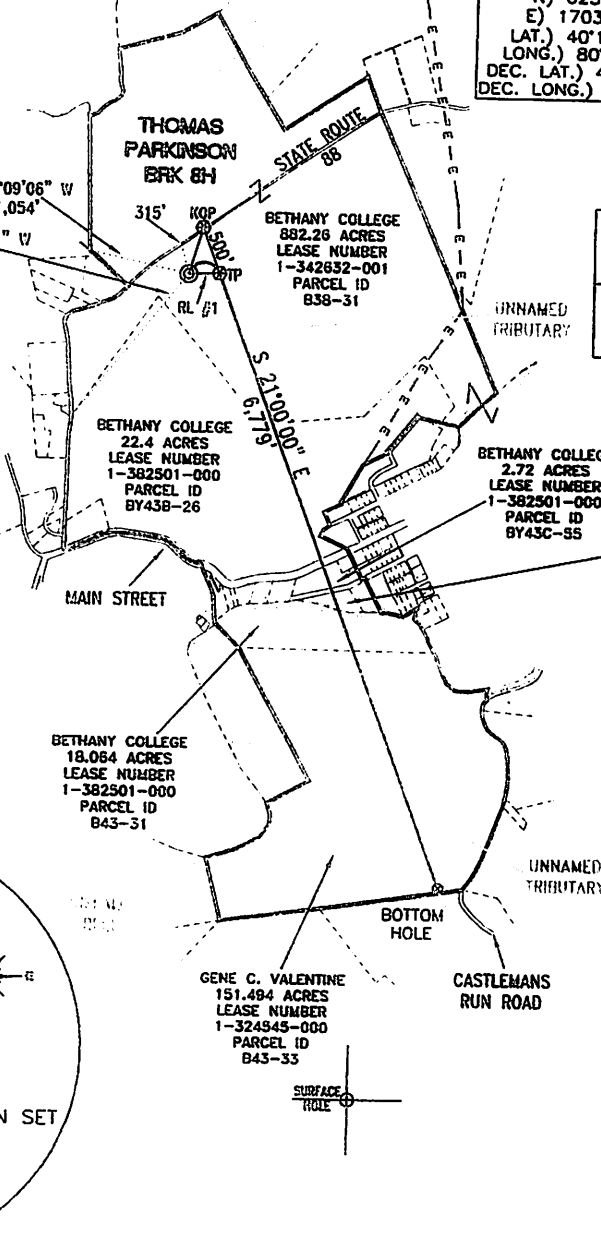
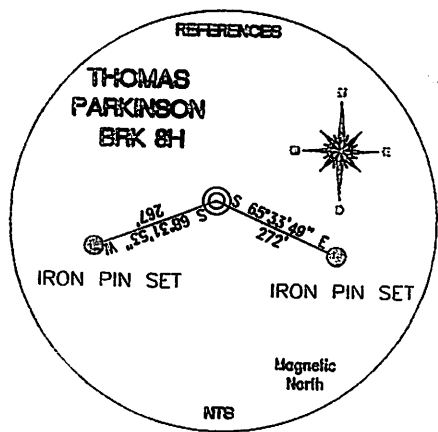
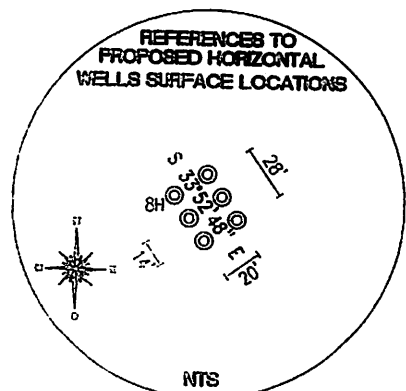


<b>TOP HOLE (NAD 83)</b> N) 625635.9 E) 1671300.9 LAT.) 40°12'46.1" LONG.) 80°33'50.9" DEC. LAT.) 40.212807 DEC. LONG.) 80.564150	<b>BOTTOM HOLE (NAD 83)</b> N) 619319.5 E) 1674052.0 LAT.) 40°11'44.0" LONG.) 80°33'14.5" DEC. LAT.) 40.195558 DEC. LONG.) 80.554035
<b>TOP HOLE (NAD 27)</b> N) 625598.8 E) 1702735.4 LAT.) 40°12'45.9" LONG.) 80°33'51.7" DEC. LAT.) 40.212736 DEC. LONG.) 80.564356	<b>BOTTOM HOLE (NAD 27)</b> N) 619282.4 E) 1705486.3 LAT.) 40°11'43.8" LONG.) 80°33'15.3" DEC. LAT.) 40.195487 DEC. LONG.) 80.554241

<b>TP (NAD 83)</b> N) 625648.4 E) 1671622.5 LAT.) 40°12'46.3" LONG.) 80°33'46.8" DEC. LAT.) 40.212852 DEC. LONG.) 80.562999	<b>KOP (NAD 83)</b> N) 626115.2 E) 1671443.3 LAT.) 40°12'50.9" LONG.) 80°33'49.2" DEC. LAT.) 40.214127 DEC. LONG.) 80.563661
<b>TP (NAD 27)</b> N) 625611.3 E) 1703056.9 LAT.) 40°12'46.0" LONG.) 80°33'47.5" DEC. LAT.) 40.212780 DEC. LONG.) 80.563209	<b>KOP (NAD 27)</b> N) 626078.1 E) 1702877.8 LAT.) 40°12'50.6" LONG.) 80°33'49.9" DEC. LAT.) 40.214056 DEC. LONG.) 80.563866

REFERENCE LINES	
RL #1	
N 87°46'26" E	322'



<b>TH (UTM-NAD 83)</b> N) 4451468.3 E) 537088.3
<b>BOTTOM HOLE (UTM-NAD 83)</b> N) 4449558.1 E) 537958.6

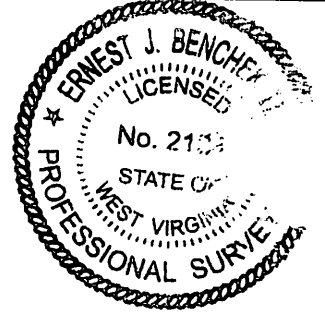
**REFERENCE NOTES**  
 Boundaries as shown taken from deeds, tax maps and field locations. A full boundary survey is not expressed nor implied. All bearings are based on true north. Ownership taken from public records Brooke County, West Virginia DECEMBER 2011  
 State Plane Coordinates & NAD 83 Lat/Long by differential submeter mapping grade GPS  
 Drafted by: E.A.H.

FILE #: CHE 076  
 DRAWING #: 1933  
 SCALE: 1"=2000'  
 MINIMUM DEGREE OF ACCURACY: 1/200  
 PROVEN SOURCE SUBMETER MAPPING OF ELEVATION: GRADE GPS

I, THE UNDERSIGNED, HEREBY CERTIFY THAT THIS PLAT IS CORRECT TO THE BEST OF MY KNOWLEDGE AND BELIEF AND SHOWS ALL THE INFORMATION REQUIRED BY LAW AND THE REGULATIONS ISSUED AND PRESCRIBED BY THE DEPARTMENT OF ENVIRONMENTAL PROTECTION.

Signed: \_\_\_\_\_

L.L.S. #2124 : Ernest J. Benchek III



(+) DENOTES LOCATION OF WELL ON UNITED STATES TOPOGRAPHIC MAPS WYDEP

OFFICE OF OIL & GAS  
 601 57TH STREET  
 CHARLESTON, WV 25304

Well Type:  Oil  Waste Diposal  Production  Deep  Gas  Liquid Injection  Storage  Shallow

WATERSHED: UPPER OHIO SOUTH

COUNTY/DISTRICT: BROOKE/BUFFALO

SURFACE OWNER: BETHANY COLLEGE

OIL & GAS ROYALTY OWNER: BETHANY COLLEGE

LEASE NUMBERS: \_\_\_\_\_

DATE: DECEMBER 04, 2012

OPERATOR'S WELL #: THOMAS PARKINSON BRK 8H

API WELL #: 47 09 00154 H6A  
 STATE COUNTY PERMIT

ELEVATION: 1,160'

QUADRANGLE: BETHANY WV.

ACREAGE: 882.26 +/-

ACREAGE: 1,078.688 +/-

DRILL  CONVERT  DRILL DEEPER  REDRILL  FRACTURE OR STIMULATE   
 PLUG OFF FORMATION  PERFORATE NEW FORMATION  PLUG & ABANDON   
 CLEAN OUT & REPLUG  OTHER CHANGE  (SPECIFY): \_\_\_\_\_

TARGET FORMATION: MARCELLUS

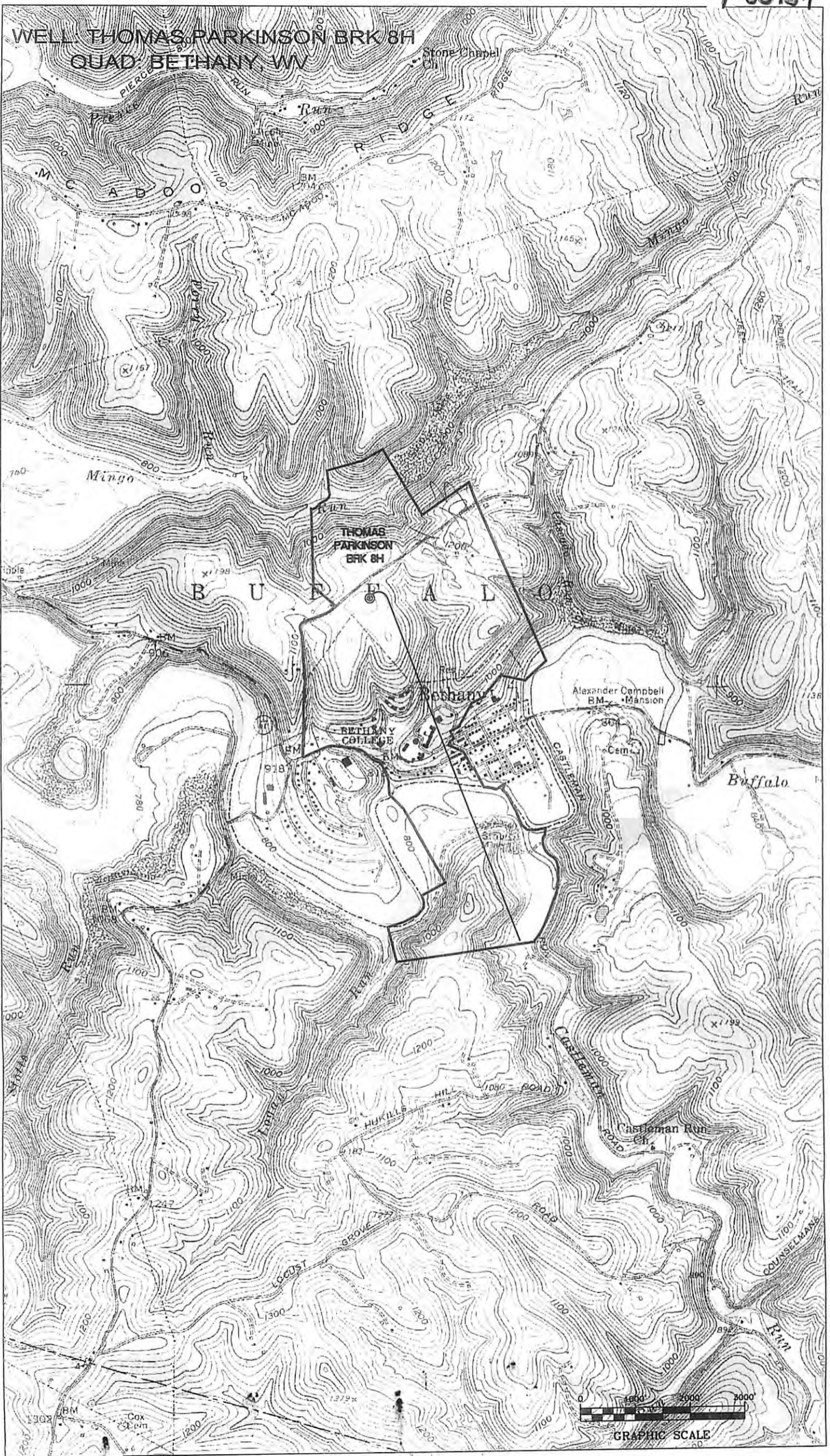
ESTIMATED DEPTH: TVD: 6,000' TMD: 12,720'

WELL OPERATOR: CHESAPEAKE APPALACHIA, LLC. DESIGNATED AGENT: ERIC B. GILLESPIE

ADDRESS: PO BOX 18496 ADDRESS: Po Box 6070

CITY: OKLAHOMA CITY STATE: OK ZIP CODE: 73154-0496 CITY: CHARLESTON STATE: WV ZIP CODE: 25362

WELL THOMAS PARKINSON BRK 8H  
QUAD BETHANY, WV



65100-6

MS 44 11/31/2017