



Alan H Degarmo BRK 1H
 Brooke Co, WV
 SDC 40
Plan vs Actual

Plan Data for Alan H Degarmo BRK 1H

Plan Point Information:
 DogLeg Severity Unit: %/100.00ft Position offsets from Slot centre

MD	Inc	Az	TVD	+N/-S	+E/-W	VSec	DLS	Toolface	Comments
(USft)	(°)	(°)	(USft)	(USft)	(USft)	(DLSU)	(°)	(°)	(°)
0.00	0.00	0.00	0.00	-0.00	0.00	-0.00	0.00	0.00	0.0
26.00	0.00	0.00	26.00	-0.00	0.00	-0.00	0.00	0.00	0.0 KB Offset
2000.00	0.00	0.00	2000.00	-0.00	0.00	-0.00	0.00	0.00	0.0 Nudge KOP
3250.00	25.00	200.64	3210.71	-251.19	-94.59	-152.86	2.00	200.6	Hold
5131.76	25.00	200.64	4916.16	-995.43	-374.85	-605.76	0.00	0.0	Curve KOP Build 7's
6352.06	70.00	326.04	5859.34	-705.34	-883.99	-77.63	7.00	129.8	Build/Turn 9's
6601.03	90.66	334.90	5901.00	-492.87	-1003.67	165.19	9.00	23.8	LP
13266.27	90.66	334.90	5824.00	5542.46	-3831.08	6737.66	0.00	0.0	PBHL AHD1H

Target Set Information:
 Name: Alan H Degarmo BRK 1H
 Position offsets from Slot centre

Name	TVD	+N/-S	+E/-W	Northing	Easting	Lat	Long
(USft)	(USft)	(USft)	(USft)	(USft)	(USft)	(°)	(°)
LP AHD1H	5901.00	-492.87	-1003.67	14616261.98	1758762.46	40.245080	-80.575894
PBHL AHD1H	5824.00	5542.46	-3831.08	14622297.31	1755935.05	40.261690	-80.585925

Plan Data for Alan H Degarmo BRK 1H

Field: SOUTHWESTERN_BROOKE CO, WV UTM NAD 83 (17N)
 Map Unit: USft Vertical Reference Datum (VRD):
 Projected Coordinate System: NAD83 / UTM zone 17N

Site: Alan H Degarmo Pad
 Unit: USFeet TVD Reference:
 Company Name: SOUTHWESTERN ENERGY

Position:
 Northing: 14616754.85USft Latitude: 40.246420°
 Easting: 1759766.13USft Longitude: -80.572289°
 North Reference: Grid Grid Convergence: 0.28°
 Elevation Above VRD: 1204.00USft

Slot: Alan H Degarmo BRK 1H
 Position:
 Offset is from Site centre
 +N/-S: 0.00USft Northing: 14616754.85USft Latitude: 40.246420°
 +E/-W: 0.00USft Easting: 1759766.13USft Longitude: -80.572289°
 Elevation Above VRD: 1204.00USft

Well: Alan H Degarmo BRK 1H
 Type: Main-Well
 File Number:

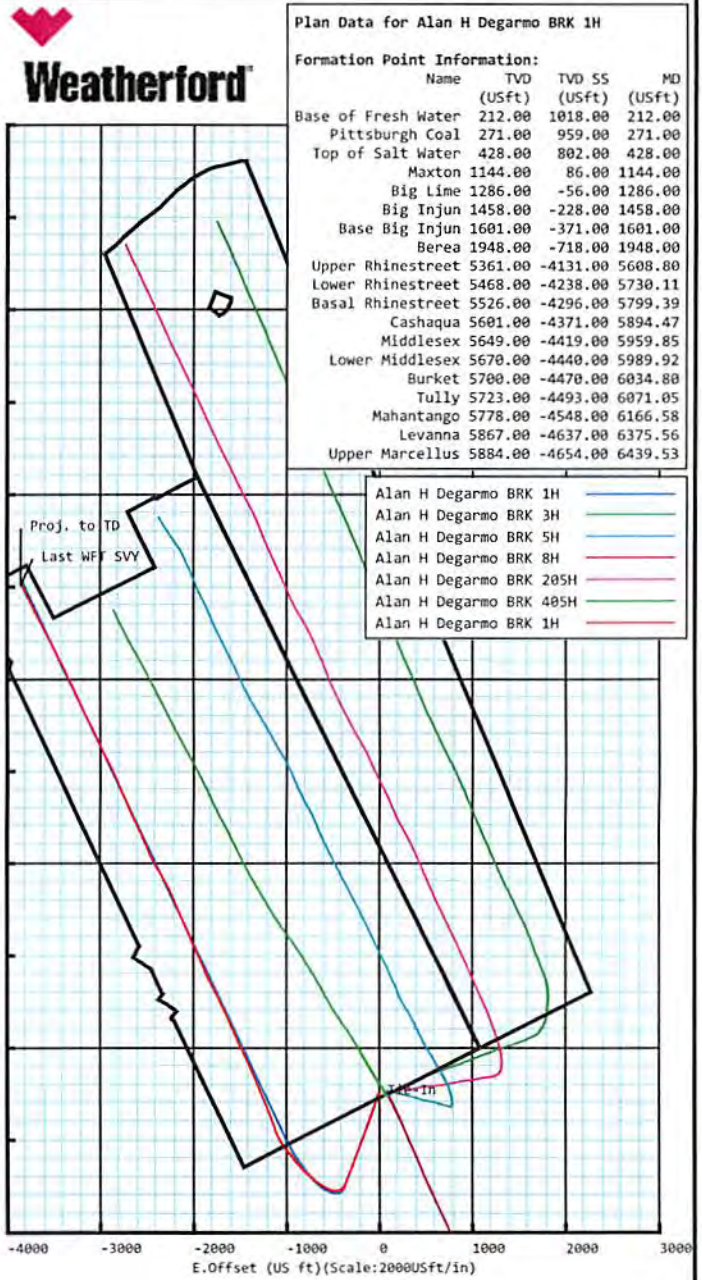
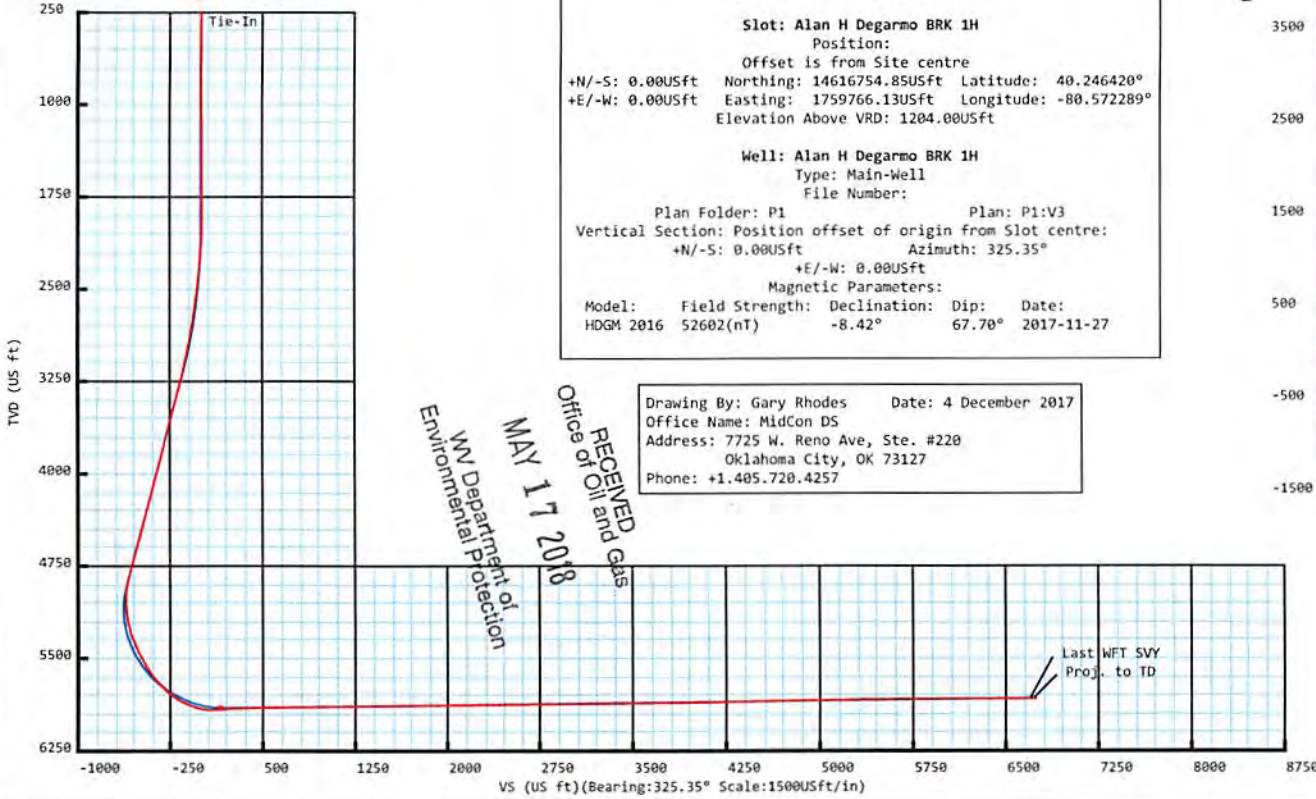
Plan Folder: P1 Plan: P1:V3
 Vertical Section: Position offset of origin from Slot centre:
 +N/-S: 0.00USft Azimuth: 325.35°
 +E/-W: 0.00USft

Magnetic Parameters:
 Model: Field Strength: Declination: Dip: Date:
 HDGM 2016 52602(nT) -8.42° 67.70° 2017-11-27

Drawing By: Gary Rhodes Date: 4 December 2017
 Office Name: MidCon DS
 Address: 7725 W. Reno Ave, Ste. #220
 Oklahoma City, OK 73127
 Phone: +1.405.720.4257

RECEIVED
 Office of Oil and Gas
 MAY 17 2018
 WV Department of Environmental Protection

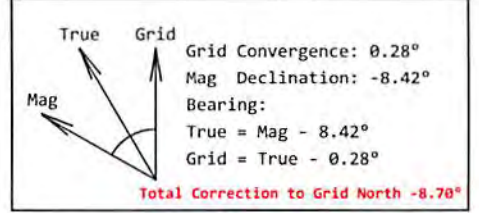
KB: 1230'
 GL: 1204'



Plan Data for Alan H Degarmo BRK 1H

Formation Point Information:

Name	TVD	TVD SS	MD
(USft)	(USft)	(USft)	(USft)
Base of Fresh Water	212.00	1018.00	212.00
Pittsburgh Coal	271.00	959.00	271.00
Top of Salt Water	428.00	802.00	428.00
Maxton	1144.00	86.00	1144.00
Big Lime	1286.00	-56.00	1286.00
Big Injun	1458.00	-228.00	1458.00
Base Big Injun	1661.00	-371.00	1661.00
Berea	1948.00	-718.00	1948.00
Upper Rhinestreet	5361.00	-4131.00	5608.80
Lower Rhinestreet	5468.00	-4238.00	5730.11
Basal Rhinestreet	5526.00	-4296.00	5799.39
Cashaqua	5691.00	-4371.00	5894.47
Middlesex	5649.00	-4419.00	5959.85
Lower Middlesex	5670.00	-4440.00	5989.92
Burket	5700.00	-4470.00	6034.80
Tully	5723.00	-4493.00	6071.05
Mahantango	5778.00	-4548.00	6166.58
Levanna	5867.00	-4637.00	6375.56
Upper Marcellus	5884.00	-4654.00	6439.53



**5D Survey Report**

SOUTHWESTERN ENERGY

Field Name: *SOUTHWESTERN_BROOKE CO, WV UTM NAD 83
(17N)*

Site Name: *Alan H Degarmo Pad*

Well Name: *Alan H Degarmo BRK 1H*

Survey: *Definitive survey*

14 December 2017

**Weatherford®**

RECEIVED
Office of Oil and Gas
MAY 17 2018
WV Department of
Environmental Protection

Alan H Degarmo BRK 1H

Map Units: US ft **Company Name:** SOUTHWESTERN ENERGY

Field Name: SOUTHWESTER N_BROOKE CO, WV UTM NAD 83 (17N)

Vertical Reference Datum (VRD):

Projected Coordinate System: NAD83 / UTM zone 17N

Comment:

Site: Alan H Degarmo Pad

Units: US ft **North Reference:** Grid **Convergence Angle:** 0.28

Position: **Northing:** 14616754.85 US ft **Latitude:** 40.246420

Easting: 1759766.13 US ft **Longitude:** -80.572289

Elevation above Field Reference: 1204.00 US ft

Comment:

Slot: Alan H Degarmo BRK 1H

Position (Relative to Site Centre)

+N/-S: 0.00 US ft **Northing:** 14616754.85 US ft **Latitude:** 40.246420

+E/-W: 0.00 US ft **Easting:** 1759766.13 US ft **Longitude:** -80.572289

Elevation above Field Reference: 1204.00 US ft

Comment:

Well: Alan H Degarmo BRK 1H

Type: Main well **UWI:**

File Number: **Comment:**

Closure Distance: 6738.89 US ft **Closure Azimuth:** 325.21°

Vertical Section: Position of Origin (Relative to Slot centre)

+N/-S: -0.00 US ft **+E/-W:** 0.00 US ft **Az:** 325.35°

Drill floor: Survey Name: Definitive Survey

Rig Height (Drill Floor): 26.00 us ft **Elevation above Field Reference:** 1230.00 us ft **Inclination:** 0.00° **Azimuth:** 0.00°

Survey Name: Definitive Survey

Date: 13/Oct/2017 **Survey Tool:** See Survey Tool Ranges below. **Comment:** **Company:**

Magnetic Model:

Model Name: HDGM 2016 **Date:** 27/Nov/2017 **Field Strength:** 52602.0nT **Declination:** -8.42° **Dip:** 67.70°

Tie Point:

MD: 0.00 US ft **Inclination:** 0.00° **Azimuth:** 0.00° **TVD:** 0.00 US ft **North Offset:** -0.00 US ft **East Offset:** 0.00 US ft

RECEIVED
Office of Oil and Gas
MAY 17 2018
WV Department of
Environmental Protection

Survey Tool Ranges:

Name	Start MD(usft)	End MD(usft)	Source Survey
EMS	0.00	359.00	EMS
MWD	359.00	1624.00	WFT MWD_01
MWD	1624.00	4423.00	WFT MWD_02
MWD	4423.00	5536.00	WFT MWD_03
MWD	5536.00	6959.00	WFT MWD_04
MWD	6959.00	13267.00	WFT MWD_05

Wellpath created using minimum curvature.

5D Survey Report

Survey Points: (Relative to Slot centre)(TVD relative to Drill Floor)										
MD (US ft)	Inc (°)	Az (°)	TVD (US ft)	VS (US ft)	N.Offset (US ft)	E.Offset (US ft)	Latitude (° ' ")	Longitude (° ' ")	DLS (%/100US ft)	Comment
0.00	0.00	0.00	0.00	0.00	-0.00	0.00	40.246420	-80.572289	0.00	
178.00	0.30	127.30	178.00	-0.44	-0.28	0.37	40.246420	-80.572287	0.17	
268.00	0.50	129.60	268.00	-1.05	-0.68	0.86	40.246419	-80.572286	0.22	
359.00	0.60	90.60	358.99	-1.70	-0.93	1.64	40.246418	-80.572283	0.42	Tie-In
414.00	0.58	197.43	413.99	-2.04	-1.20	1.85	40.246417	-80.572282	1.72	
504.00	0.81	241.59	503.99	-2.25	-1.94	1.15	40.246415	-80.572285	0.63	
595.00	0.98	217.82	594.97	-2.41	-2.86	0.11	40.246413	-80.572288	0.44	
685.00	0.83	259.20	684.96	-2.38	-3.59	-1.00	40.246411	-80.572292	0.73	
778.00	0.96	303.78	777.95	-1.39	-3.28	-2.31	40.246411	-80.572297	0.74	
870.00	0.82	324.66	869.94	-0.01	-2.32	-3.33	40.246414	-80.572301	0.38	
963.00	1.10	331.81	962.93	1.54	-0.99	-4.14	40.246418	-80.572304	0.33	
1056.00	0.83	331.60	1055.92	3.10	0.39	-4.88	40.246422	-80.572306	0.29	
1149.00	1.10	314.15	1148.90	4.64	1.61	-5.84	40.246425	-80.572310	0.43	
1241.00	0.65	294.08	1240.89	5.96	2.43	-6.95	40.246427	-80.572314	0.58	
1334.00	0.25	210.22	1333.89	6.32	2.47	-7.54	40.246427	-80.572316	0.72	
1427.00	0.41	219.17	1426.89	6.14	2.04	-7.85	40.246426	-80.572317	0.18	
1519.00	0.81	230.03	1518.88	5.99	1.37	-8.56	40.246424	-80.572319	0.45	
1612.00	0.96	236.10	1611.87	5.94	0.51	-9.71	40.246422	-80.572323	0.19	
1624.00	0.83	244.78	1623.87	5.95	0.42	-9.87	40.246422	-80.572324	1.56	
1734.00	1.09	251.25	1733.86	6.37	-0.26	-11.58	40.246420	-80.572330	0.26	
1827.00	1.15	253.30	1826.84	6.90	-0.81	-13.31	40.246418	-80.572336	0.08	
1919.00	1.34	220.40	1918.82	6.91	-1.90	-14.89	40.246415	-80.572342	0.79	
2012.00	2.42	194.91	2011.77	5.35	-4.62	-16.10	40.246408	-80.572346	1.44	
2105.00	4.08	185.68	2104.61	1.56	-9.81	-16.94	40.246394	-80.572350	1.87	
2198.00	6.00	192.71	2197.25	-4.26	-17.85	-18.33	40.246372	-80.572355	2.16	
2290.00	7.14	195.38	2288.65	-11.19	-28.05	-20.91	40.246344	-80.572364	1.28	
2383.00	8.92	197.00	2380.73	-19.37	-40.52	-24.55	40.246309	-80.572377	1.93	
2476.00	10.32	198.91	2472.42	-28.80	-55.29	-29.36	40.246269	-80.572395	1.54	
2569.00	11.36	198.28	2563.76	-39.27	-71.87	-34.93	40.246223	-80.572415	1.13	
2661.00	12.97	197.00	2653.69	-51.13	-90.35	-40.79	40.246173	-80.572436	1.77	
2754.00	14.77	197.25	2743.98	-64.93	-111.65	-47.36	40.246114	-80.572460	1.94	
2847.00	16.16	198.87	2833.61	-79.94	-135.22	-55.06	40.246050	-80.572488	1.56	
2939.00	17.77	200.56	2921.60	-95.56	-160.48	-64.13	40.245981	-80.572521	1.83	
3032.00	19.33	200.89	3009.77	-112.37	-188.15	-74.60	40.245905	-80.572559	1.68	
3125.00	20.40	200.00	3097.23	-130.45	-217.77	-85.64	40.245824	-80.572599	1.20	
3217.00	21.58	200.55	3183.13	-149.39	-248.68	-97.06	40.245739	-80.572641	1.30	
3310.00	23.51	200.51	3269.01	-169.75	-282.07	-109.56	40.245647	-80.572686	2.08	
3403.00	25.35	200.16	3353.68	-191.82	-318.13	-122.92	40.245548	-80.572735	1.98	
3496.00	25.14	199.11	3437.80	-214.97	-355.49	-136.25	40.245446	-80.572783	0.53	
3588.00	24.50	197.86	3521.30	-238.13	-392.11	-148.50	40.245346	-80.572828	0.90	
3681.00	24.51	200.69	3605.93	-260.84	-428.51	-161.23	40.245246	-80.572874	1.26	
3774.00	23.79	200.89	3690.79	-282.43	-464.08	-174.74	40.245148	-80.572923	0.78	
3867.00	24.76	201.08	3775.57	-304.01	-499.78	-188.43	40.245050	-80.572973	1.05	
3959.00	24.49	200.21	3859.20	-325.83	-535.65	-201.95	40.244952	-80.573022	0.49	
4052.00	23.71	199.85	3944.09	-347.78	-571.33	-214.95	40.244854	-80.573069	0.85	
4145.00	24.38	200.48	4029.02	-369.62	-606.90	-228.02	40.244757	-80.573116	0.77	
4238.00	24.65	200.49	4113.64	-391.67	-643.05	-241.52	40.244658	-80.573165	0.29	
4330.00	24.68	200.46	4197.25	-413.63	-679.01	-254.95	40.244559	-80.573214	0.04	
4423.00	24.75	200.24	4281.73	-435.93	-715.47	-268.48	40.244459	-80.573263	0.12	
4516.00	25.14	200.13	4366.05	-458.52	-752.28	-282.01	40.244358	-80.573312	0.42	
4609.00	25.10	203.54	4450.26	-480.31	-788.92	-296.69	40.244258	-80.573366	1.56	
4701.00	25.66	200.87	4533.38	-501.87	-825.42	-311.58	40.244158	-80.573420	1.38	
4794.00	26.75	201.12	4616.82	-525.05	-863.76	-326.29	40.244053	-80.573473	1.18	
4887.00	26.34	201.09	4700.02	-548.44	-902.53	-341.26	40.243947	-80.573527	0.44	
4980.00	25.76	200.24	4783.57	-571.67	-940.75	-355.67	40.243842	-80.573580	0.74	
5072.00	24.53	201.10	4866.85	-593.92	-977.32	-369.47	40.243742	-80.573630	1.39	
5119.00	21.69	207.25	4910.08	-603.51	-994.15	-376.96	40.243695	-80.573657	7.92	
5165.00	20.63	221.05	4953.01	-609.52	-1007.83	-386.18	40.243658	-80.573690	11.05	
5211.00	19.42	232.13	4996.24	-611.95	-1018.64	-397.54	40.243628	-80.573731	8.64	

RECEIVED
Office of Oil and Gas

MAY 17 2018

WV Department of
Environmental Protection

Survey Points: (Relative to Slot centre)(TVD relative to Drill Floor)										
MD (US ft)	Inc (°)	Az (°)	TVD (US ft)	VS (US ft)	N.Offset (US ft)	E.Offset (US ft)	Latitude (° ' ")	Longitude (° ' ")	DL5 (°/100US ft)	Comment
5258.00	18.92	240.24	5040.64	-611.74	-1027.22	-410.33	40.243605	-80.573777	5.76	
5304.00	19.60	247.81	5084.07	-609.44	-1033.84	-423.95	40.243587	-80.573826	5.62	
5350.00	20.23	254.69	5127.33	-605.14	-1038.85	-438.76	40.243574	-80.573879	5.27	
5397.00	20.17	261.69	5171.44	-598.85	-1042.17	-454.62	40.243565	-80.573936	5.14	
5443.00	20.49	268.78	5214.59	-590.89	-1043.49	-470.52	40.243561	-80.573993	5.40	
5489.00	21.90	275.45	5257.48	-580.93	-1042.84	-487.11	40.243563	-80.574052	6.07	
5536.00	23.79	280.55	5300.79	-568.56	-1040.27	-505.16	40.243570	-80.574117	5.82	
5568.00	25.31	285.03	5329.90	-558.76	-1037.32	-518.11	40.243579	-80.574163	7.51	
5615.00	26.88	290.12	5372.12	-542.42	-1031.06	-537.80	40.243596	-80.574234	5.82	
5661.00	27.46	294.84	5413.05	-524.78	-1023.02	-557.19	40.243619	-80.574303	4.85	
5708.00	27.94	299.29	5454.66	-505.55	-1013.08	-576.63	40.243646	-80.574373	4.52	
5754.00	29.44	302.62	5495.02	-485.44	-1001.72	-595.55	40.243678	-80.574440	4.76	
5800.00	32.04	303.22	5534.55	-463.71	-988.93	-615.28	40.243713	-80.574511	5.69	
5847.00	34.20	304.05	5573.91	-439.85	-974.71	-636.66	40.243752	-80.574587	4.70	
5893.00	36.39	304.88	5611.46	-415.02	-959.66	-658.57	40.243794	-80.574665	4.87	
5940.00	38.93	306.86	5648.66	-387.95	-942.83	-681.83	40.243840	-80.574748	5.99	
5986.00	41.37	309.72	5683.82	-359.60	-924.44	-705.09	40.243891	-80.574831	6.65	
6032.00	44.29	312.49	5717.56	-329.29	-903.87	-728.63	40.243948	-80.574915	7.55	
6078.00	47.72	313.10	5749.50	-296.99	-881.39	-752.90	40.244010	-80.575002	7.52	
6125.00	51.00	313.18	5780.11	-262.14	-857.01	-778.92	40.244077	-80.575095	6.98	
6171.00	54.47	314.90	5807.96	-226.25	-831.55	-805.23	40.244148	-80.575189	8.11	
6217.00	58.30	316.77	5833.42	-188.48	-804.07	-831.90	40.244223	-80.575284	8.99	
6264.00	62.93	318.66	5856.48	-147.90	-773.77	-859.43	40.244307	-80.575382	10.46	
6310.00	67.27	320.06	5875.84	-106.41	-742.12	-886.59	40.244394	-80.575479	9.83	
6356.00	72.06	320.82	5891.83	-63.45	-708.87	-914.05	40.244486	-80.575576	10.53	
6403.00	76.43	321.31	5904.58	-18.35	-673.69	-942.47	40.244583	-80.575678	9.35	
6449.00	81.83	321.75	5913.26	26.71	-638.33	-970.56	40.244680	-80.575778	11.78	
6496.00	87.10	322.93	5917.79	73.40	-601.31	-999.13	40.244782	-80.575879	11.49	
6542.00	93.15	322.94	5917.69	119.34	-564.62	-1026.84	40.244883	-80.575978	13.15	
6588.00	95.55	326.11	5914.20	165.20	-527.28	-1053.46	40.244986	-80.576073	8.63	
6635.00	94.81	330.86	5909.95	211.92	-487.39	-1077.92	40.245096	-80.576160	10.19	
6681.00	91.36	335.71	5907.47	257.39	-446.37	-1098.56	40.245209	-80.576233	12.93	
6727.00	91.79	341.60	5906.21	302.12	-403.56	-1115.29	40.245327	-80.576292	12.83	
6774.00	92.22	342.04	5904.57	347.16	-358.94	-1129.94	40.245450	-80.576344	1.31	
6866.00	92.47	339.46	5900.80	435.78	-272.16	-1160.24	40.245688	-80.576451	2.82	
6959.00	90.43	338.85	5898.45	526.06	-185.28	-1193.33	40.245927	-80.576568	2.29	
7052.00	90.37	336.32	5897.80	616.94	-99.32	-1228.78	40.246164	-80.576694	2.72	
7145.00	90.56	337.84	5897.04	707.99	-13.67	-1265.00	40.246400	-80.576822	1.65	
7237.00	90.74	337.97	5896.00	797.78	71.57	-1299.60	40.246634	-80.576945	0.24	
7330.00	90.86	336.87	5894.70	888.72	157.43	-1335.31	40.246870	-80.577071	1.19	
7423.00	90.68	336.31	5893.45	979.93	242.77	-1372.25	40.247105	-80.577202	0.63	
7515.00	90.62	336.23	5892.41	1070.25	326.99	-1409.28	40.247337	-80.577333	0.11	
7608.00	90.49	333.65	5891.51	1161.94	411.22	-1448.66	40.247569	-80.577473	2.78	
7701.00	90.74	334.97	5890.51	1253.80	495.02	-1488.97	40.247799	-80.577616	1.44	
7794.00	90.80	336.79	5889.26	1345.22	579.89	-1526.97	40.248033	-80.577751	1.96	
7886.00	90.49	335.79	5888.22	1435.54	664.12	-1563.97	40.248265	-80.577882	1.14	
7979.00	90.55	336.09	5887.38	1526.95	749.04	-1601.88	40.248498	-80.578016	0.33	
8072.00	90.80	336.61	5886.28	1618.24	834.22	-1639.18	40.248733	-80.578149	0.62	
8164.00	90.62	334.73	5885.14	1708.74	918.04	-1677.08	40.248963	-80.578283	2.05	
8257.00	90.86	334.11	5883.94	1800.57	1001.91	-1717.23	40.249194	-80.578426	0.71	
8350.00	90.68	332.68	5882.69	1892.64	1085.06	-1758.88	40.249423	-80.578573	1.55	
8442.00	90.56	333.00	5881.70	1983.85	1166.91	-1800.87	40.249648	-80.578722	0.37	
8535.00	90.37	333.74	5880.94	2075.94	1250.04	-1842.55	40.249877	-80.578870	0.82	
8627.00	90.68	338.01	5880.10	2166.37	1333.98	-1880.15	40.250108	-80.579004	4.65	
8720.00	90.62	337.55	5879.04	2257.18	1420.07	-1915.31	40.250345	-80.579128	0.50	
8813.00	90.55	334.52	5878.09	2348.55	1505.04	-1953.08	40.250579	-80.579262	3.26	
8906.00	90.62	335.96	5877.14	2440.16	1589.48	-1992.03	40.250811	-80.579400	1.55	
8998.00	90.55	337.61	5876.20	2530.33	1674.02	-2028.29	40.251044	-80.579529	1.79	
9091.00	90.62	336.96	5875.25	2621.31	1759.81	-2064.20	40.251280	-80.579656	0.70	

RECEIVED
Office of Oil and Gas
MAY 17 2018
WV Department of
Environmental Protection

5D Survey Report

Survey Points: (Relative to Slot centre)(TVD relative to Drill Floor)										
MD (US ft)	Inc (°)	Az (°)	TVD (US ft)	VS (US ft)	H.Offset (US ft)	E.Offset (US ft)	Latitude (° ' ")	Longitude (° ' ")	DLS (°/100US ft)	Comment
9184.00	90.55	335.90	5874.30	2712.57	1845.04	-2101.39	40.251514	-80.579788	1.14	
9277.00	90.62	336.75	5873.36	2803.87	1930.21	-2138.73	40.251749	-80.579920	0.92	
9369.00	90.49	337.61	5872.46	2893.91	2015.00	-2174.41	40.251982	-80.580047	0.95	
9462.00	90.49	336.44	5871.67	2984.98	2100.62	-2210.70	40.252218	-80.580175	1.26	
9555.00	90.74	335.76	5870.67	3076.34	2185.64	-2248.38	40.252452	-80.580309	0.78	
9648.00	90.99	332.97	5869.27	3168.17	2269.47	-2288.61	40.252682	-80.580452	3.01	
9740.00	90.55	329.73	5868.03	3259.65	2350.19	-2332.71	40.252905	-80.580608	3.55	
9833.00	90.49	329.14	5867.19	3352.41	2430.26	-2380.00	40.253125	-80.580776	0.64	
9926.00	90.49	332.03	5866.39	3445.01	2511.26	-2425.67	40.253348	-80.580939	3.11	
10019.00	90.56	336.69	5865.54	3536.83	2595.08	-2465.90	40.253579	-80.581082	5.01	
10111.00	90.74	337.06	5864.49	3626.97	2679.68	-2502.03	40.253812	-80.581210	0.45	
10204.00	90.80	337.66	5863.24	3717.92	2765.50	-2537.82	40.254048	-80.581336	0.65	
10297.00	90.25	334.77	5862.39	3809.24	2850.59	-2575.32	40.254282	-80.581469	3.16	
10390.00	90.68	334.76	5861.64	3900.99	2934.71	-2614.97	40.254513	-80.581610	0.46	
10482.00	90.80	335.95	5860.45	3991.58	3018.33	-2653.33	40.254743	-80.581746	1.30	
10575.00	91.05	335.79	5858.95	4083.00	3103.19	-2691.34	40.254977	-80.581881	0.32	
10668.00	91.11	336.01	5857.19	4174.42	3188.07	-2729.31	40.255211	-80.582016	0.25	
10760.00	91.23	336.36	5855.32	4264.76	3272.22	-2766.45	40.255442	-80.582147	0.40	
10853.00	91.30	337.13	5853.26	4355.90	3357.64	-2803.16	40.255677	-80.582277	0.83	
10946.00	91.11	335.99	5851.31	4447.10	3442.94	-2840.15	40.255912	-80.582409	1.24	
11038.00	91.05	334.15	5849.57	4537.76	3526.35	-2878.92	40.256141	-80.582546	2.00	
11131.00	90.86	332.47	5848.02	4629.85	3609.43	-2920.68	40.256370	-80.582694	1.82	
11224.00	91.36	335.38	5846.22	4721.78	3692.94	-2961.55	40.256600	-80.582839	3.17	
11316.00	91.42	335.52	5843.99	4812.33	3776.60	-2999.76	40.256830	-80.582975	0.17	
11409.00	90.68	335.87	5842.28	4903.80	3861.34	-3038.03	40.257063	-80.583111	0.88	
11502.00	90.56	335.04	5841.28	4995.36	3945.93	-3076.66	40.257296	-80.583248	0.90	
11594.00	90.62	332.83	5840.33	5086.31	4028.56	-3117.08	40.257524	-80.583391	2.40	
11687.00	91.42	334.07	5838.68	5178.37	4111.74	-3158.64	40.257753	-80.583539	1.59	
11780.00	90.86	335.09	5836.82	5270.15	4195.72	-3198.56	40.257984	-80.583680	1.25	
11872.00	91.05	335.82	5835.29	5360.70	4279.39	-3236.77	40.258214	-80.583816	0.82	
11965.00	90.56	336.39	5833.98	5452.06	4364.41	-3274.43	40.258448	-80.583950	0.81	
12058.00	90.55	335.76	5833.08	5543.43	4449.42	-3312.15	40.258682	-80.584083	0.68	
12151.00	90.43	336.19	5832.29	5634.83	4534.36	-3350.01	40.258915	-80.584218	0.48	
12243.00	90.31	334.21	5831.69	5725.47	4617.87	-3388.60	40.259145	-80.584355	2.16	
12336.00	90.18	331.59	5831.30	5817.66	4700.65	-3430.96	40.259373	-80.584505	2.82	
12428.00	91.05	333.13	5830.31	5908.96	4782.14	-3473.63	40.259597	-80.584657	1.92	
12521.00	89.82	334.38	5829.60	6000.95	4865.55	-3514.76	40.259827	-80.584803	1.89	
12613.00	90.12	333.48	5829.65	6091.92	4948.19	-3555.19	40.260054	-80.584946	1.03	
12706.00	90.25	332.41	5829.35	6184.11	5031.01	-3597.49	40.260282	-80.585096	1.16	
12799.00	90.43	332.78	5828.80	6276.36	5113.57	-3640.29	40.260510	-80.585248	0.44	
12892.00	89.88	332.77	5828.55	6368.58	5196.27	-3682.84	40.260737	-80.585399	0.59	
12985.00	90.31	335.24	5828.39	6460.51	5279.85	-3723.60	40.260967	-80.585544	2.70	
13077.00	90.12	331.55	5828.05	6551.59	5362.10	-3764.79	40.261194	-80.585690	4.02	
13170.00	90.00	334.83	5827.95	6643.71	5445.09	-3806.73	40.261422	-80.585839	3.53	
13244.00	89.94	337.52	5827.99	6716.39	5512.77	-3836.62	40.261608	-80.585945	3.64	Last WFT SVY
13267.00	89.94	337.52	5828.01	6738.87	5534.03	-3845.41	40.261667	-80.585977	0.00	Proj. to TD

RECEIVED
Office of Oil and Gas

MAY 17 2018

WV Department of
Environmental Protection