

Plot reference wellpath is Brian Teslovich BRK 3H AWB_awp 50' - 18905' Proj: 18930'	Grid System: NAD83 / UTM Zone 17 North, US feet
True vertical depths are referenced to SDC 40 (KB)	North Reference: Grid north
Reference wellpath measured depths are referenced to SDC 40 (KB)	Scale: True distance
SDC 40 (KB) to Mean Sea Level: 1175.4 feet	Coordinates are in feet referenced to Slot
Mean Sea Level to Ground level (At Slot: Slot 3H): -1149.4 feet	Depths are in feet
Offset wellpath MDs are referenced to each path's default MD datum	Created by: tranlam on 2021-11-15; Database: WA_MPL_EASTERNUS_Defn

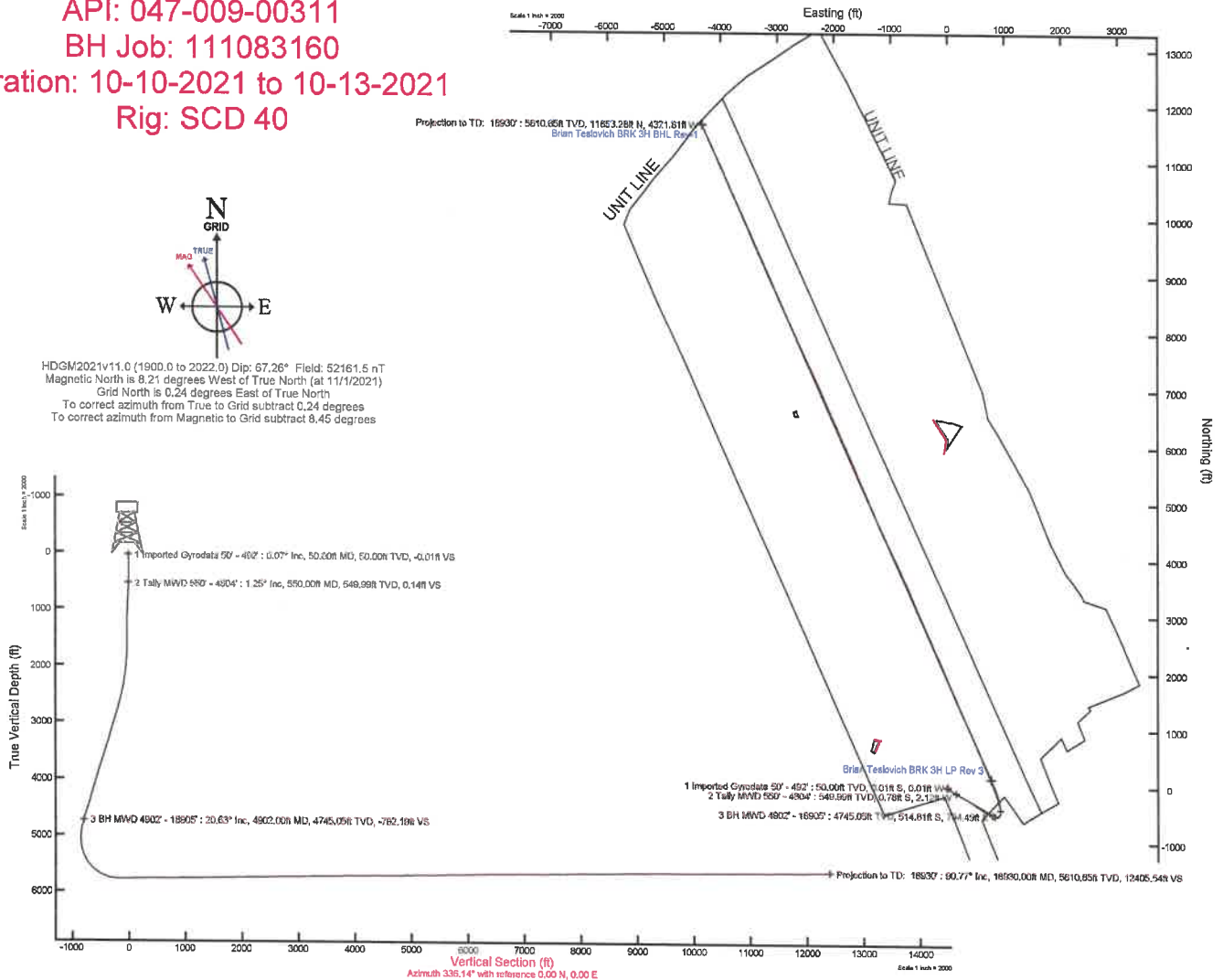
Location Information

Facility Name		Grid East (US ft)	Grid North (US ft)	Latitude	Longitude	
Brian Teslovich BRK Pad		1742753.670	14605851.360	40°13'0.0784"N	80°38'0.2985"W	
Slot	Local N (ft)	Local E (ft)	Grid East (US ft)	Grid North (US ft)	Latitude	Longitude
Slot 3H	-5.08	7.59	1742761.260	14605846.280	40°13'0.0279"N	80°38'0.2009"W
SDC 40 (KB) to Ground level (At Slot: Slot 3H)				28ft		
Mean Sea Level to Ground level (At Slot: Slot 3H)				-1149.4ft		
SDC 40 (KB) to Mean Sea Level				1175.4ft		

Bottom Hole Location

MD (ft)	Inc (")	Az (")	TVD (ft)	Local N (ft)	Local E (ft)	Grid East (US ft)	Grid North (US ft)	Latitude	Longitude
18930.00	90.770	337.070	5610.85	11653.28	-4321.81	1738441.13	14617495.02	40°14'55.3567"N	80°38'55.3158"W

API: 047-009-00311
BH Job: 111083160
Duration: 10-10-2021 to 10-13-2021
Rig: SCD 40





Actual Wellpath Report

Brian Teslovich BRK 3H AWB_ awp 50' - 18905' Proj: 18930'
Page 1 of 10



REFERENCE WELLPATH IDENTIFICATION			
Operator	SWN PRODUCTION COMPANY, LLC	Well	Brian Teslovich BRK 3H
Field	Brooke	API	047-009-00311
Facility	Brian Teslovich BRK Pad	Wellbore	Brian Teslovich BRK 3H AWB
Slot	Slot 3H		

REPORT SETUP INFORMATION			
Projection System	NAD83 / UTM Zone 17 North, US feet	Software System	WellArchitect@ 6.0
North Reference	Grid	User	Tranlam
Scale	0.999612	Report Generated	11/16/2021 at 11:45:45 AM
Convergence at slot	0.24° East	Database	WA_MPL_EASTERNUS_Defn

WELLPATH LOCATION						
	Local coordinates		Grid coordinates		Geographic coordinates	
	North[ft]	East[ft]	Easting[US ft]	Northing[US ft]	Latitude	Longitude
Slot Location	-5.08	7.59	1742761.26	14605846.28	40°13'0.0279"N	80°38'0.2009"W
Facility Reference Pt			1742753.67	14605851.36	40°13'0.0784"N	80°38'0.2985"W
Field Reference Pt			0.00	0.00	0°00'0.0000"	85°29'19.4780"W

WELLPATH DATUM			
Calculation method	Minimum curvature	SDC 40 (KB) to Facility Vertical Datum	1175.40ft
Horizontal Reference Pt	Slot	SDC 40 (KB) to Mean Sea Level	1175.40ft
Vertical Reference Pt	SDC 40 (KB)	SDC 40 (KB) to Ground Level at Slot (Slot 3H)	26.00ft
MD Reference Pt	SDC 40 (KB)	Section Origin	N 0.00, E 0.00 ft
Field Vertical Reference	Mean Sea Level	Section Azimuth	336.14°



Actual Wellpath Report

Brian Teslovich BRK 3H AWB_ awp 50' - 18905' Proj: 18930'
Page 2 of 10



REFERENCE WELLPATH IDENTIFICATION			
Operator	SWN PRODUCTION COMPANY, LLC	Well	Brian Teslovich BRK 3H
Field	Brooke	API	047-009-00311
Facility	Brian Teslovich BRK Pad	Wellbore	Brian Teslovich BRK 3H AWB
Slot	Slot 3H		

WELLPATH DATA (218 stations) † = interpolated, ‡ = extrapolated station													
MD [ft]	Inclination [°]	Azimuth [°]	TVD [ft]	Vert Sect [ft]	North [ft]	East [ft]	Grid East [US ft]	Grid North [US ft]	Latitude	Longitude	Closure Dist [ft]	Closure Dir [°]	DLS ["/100ft]
0.00†	0.000	215.260	0.00	0.00	0.00	0.00	1742761.26	14605846.28	40°13'0.0279"N	80°38'0.2009"W	0.00	0.000	0.00
26.00	0.000	215.260	26.00	0.00	0.00	0.00	1742761.26	14605846.28	40°13'0.0279"N	80°38'0.2009"W	0.00	0.000	0.00
50.00	0.070	215.260	50.00	-0.01	-0.01	-0.01	1742761.25	14605846.27	40°13'0.0278"N	80°38'0.2010"W	0.01	215.260	0.29
100.00	0.060	246.750	100.00	-0.02	-0.05	-0.05	1742761.21	14605846.23	40°13'0.0274"N	80°38'0.2015"W	0.07	226.708	0.07
150.00	0.090	252.600	150.00	-0.02	-0.07	-0.11	1742761.15	14605846.21	40°13'0.0272"N	80°38'0.2023"W	0.13	238.170	0.06
200.00	0.100	258.300	200.00	0.00	-0.09	-0.19	1742761.07	14605846.19	40°13'0.0270"N	80°38'0.2033"W	0.21	244.892	0.03
250.00	0.130	256.450	250.00	0.01	-0.11	-0.29	1742760.97	14605846.17	40°13'0.0268"N	80°38'0.2046"W	0.31	248.857	0.06
300.00	0.030	14.830	300.00	0.04	-0.11	-0.34	1742760.92	14605846.17	40°13'0.0268"N	80°38'0.2053"W	0.36	251.740	0.29
350.00	0.280	264.640	350.00	0.08	-0.11	-0.46	1742760.80	14605846.17	40°13'0.0268"N	80°38'0.2068"W	0.47	256.376	0.58
400.00	0.370	277.390	400.00	0.21	-0.10	-0.74	1742760.52	14605846.18	40°13'0.0269"N	80°38'0.2104"W	0.75	262.161	0.23
450.00	0.500	253.790	450.00	0.32	-0.14	-1.11	1742760.15	14605846.14	40°13'0.0265"N	80°38'0.2152"W	1.12	262.706	0.44
500.00	0.520	242.070	500.00	0.33	-0.31	-1.52	1742759.74	14605845.97	40°13'0.0249"N	80°38'0.2205"W	1.55	258.502	0.21
550.00	1.250	227.440	549.99	0.14	-0.78	-2.12	1742759.14	14605845.50	40°13'0.0202"N	80°38'0.2283"W	2.26	249.721	1.52
600.00	2.100	217.190	599.97	-0.48	-1.88	-3.08	1742758.18	14605844.40	40°13'0.0094"N	80°38'0.2407"W	3.61	238.546	1.80
650.00	3.450	212.610	649.91	-1.75	-3.88	-4.44	1742756.82	14605842.40	40°12'59.9897"N	80°38'0.2584"W	5.90	228.869	2.73
680.00	4.060	210.340	679.84	-2.87	-5.56	-5.47	1742755.80	14605840.72	40°12'59.9732"N	80°38'0.2716"W	7.80	224.527	2.09
779.00	5.320	209.260	778.51	-7.68	-12.59	-9.48	1742751.78	14605833.70	40°12'59.9039"N	80°38'0.3237"W	15.76	216.987	1.28
870.00	4.870	202.070	869.15	-12.89	-19.85	-12.99	1742748.27	14605826.44	40°12'59.8323"N	80°38'0.3694"W	23.72	213.213	0.86
960.00	3.420	187.570	958.92	-17.84	-26.05	-14.78	1742746.48	14605820.24	40°12'59.7711"N	80°38'0.3928"W	29.95	209.575	1.98
1051.00	1.850	155.700	1049.82	-21.63	-30.08	-14.54	1742746.73	14605816.21	40°12'59.7312"N	80°38'0.3898"W	33.41	205.793	2.30
1143.00	1.520	125.600	1141.78	-24.16	-32.14	-12.93	1742748.33	14605814.15	40°12'59.7108"N	80°38'0.3693"W	34.65	201.917	1.01
1233.00	0.740	112.230	1231.76	-25.61	-33.06	-11.42	1742749.84	14605813.24	40°12'59.7017"N	80°38'0.3499"W	34.98	199.064	0.91
1322.00	0.240	80.700	1320.76	-26.07	-33.24	-10.71	1742750.56	14605813.05	40°12'59.6998"N	80°38'0.3407"W	34.93	197.854	0.62
1411.00	0.510	20.960	1409.76	-25.84	-32.84	-10.38	1742750.88	14605813.45	40°12'59.7037"N	80°38'0.3364"W	34.45	197.542	0.50
1501.00	0.580	34.330	1499.76	-25.31	-32.09	-9.98	1742751.28	14605814.20	40°12'59.7111"N	80°38'0.3313"W	33.61	197.277	0.16
1563.00	0.460	17.730	1561.75	-24.96	-31.60	-9.73	1742751.53	14605814.69	40°12'59.7160"N	80°38'0.3280"W	33.06	197.114	0.31
1630.00	0.740	1.910	1628.75	-24.37	-30.91	-9.63	1742751.63	14605815.38	40°12'59.7228"N	80°38'0.3267"W	32.38	197.310	0.48
1702.00	0.650	87.440	1700.75	-24.10	-30.43	-9.21	1742752.05	14605815.87	40°12'59.7276"N	80°38'0.3212"W	31.79	196.840	1.31
1792.00	4.320	121.690	1790.65	-27.08	-32.18	-5.81	1742755.45	14605814.11	40°12'59.7101"N	80°38'0.2775"W	32.71	190.240	4.22
1883.00	6.420	117.960	1881.24	-33.91	-36.37	1.60	1742762.86	14605809.92	40°12'59.6684"N	80°38'0.1822"W	36.41	177.486	2.34



Actual Wellpath Report

Brian Teslovich BRK 3H AWB_ awp 50' - 18905' Proj: 18930'
Page 3 of 10



REFERENCE WELLPATH IDENTIFICATION			
Operator	SWN PRODUCTION COMPANY, LLC	Well	Brian Teslovich BRK 3H
Field	Brooke	API	047-009-00311
Facility	Brian Teslovich BRK Pad	Wellbore	Brian Teslovich BRK 3H AWB
Slot	Slot 3H		

WELLPATH DATA (218 stations)

MD [ft]	Inclination [°]	Azimuth [°]	TVD [ft]	Vert Sect [ft]	North [ft]	East [ft]	Grid East [US ft]	Grid North [US ft]	Latitude	Longitude	Closure Dist [ft]	Closure Dir [°]	DLS [°/100ft]
1974.00	6.100	115.560	1971.70	-41.58	-40.84	10.45	1742771.71	14605805.45	40°12'59.6239"N	80°38'0.0683"W	42.16	165.645	0.45
2064.00	6.960	111.510	2061.12	-49.09	-44.91	19.84	1742781.09	14605801.39	40°12'59.5833"N	80°37'59.9475"W	49.09	156.163	1.08
2155.00	8.940	116.510	2151.24	-58.46	-50.08	31.30	1742792.55	14605796.22	40°12'59.5317"N	80°37'59.8001"W	59.06	147.998	2.30
2246.00	10.760	118.140	2240.89	-70.60	-57.25	45.12	1742806.36	14605789.06	40°12'59.4603"N	80°37'59.6223"W	72.89	141.758	2.02
2339.00	12.910	118.810	2331.91	-85.71	-66.35	61.88	1742823.11	14605779.96	40°12'59.3697"N	80°37'59.4068"W	90.72	136.997	2.32
2429.00	14.210	119.160	2419.40	-102.53	-76.58	80.33	1742841.56	14605769.73	40°12'59.2679"N	80°37'59.1694"W	110.98	133.628	1.45
2521.00	15.940	118.940	2508.23	-121.61	-88.19	101.25	1742862.47	14605758.12	40°12'59.1522"N	80°37'58.9004"W	134.28	131.056	1.88
2612.00	17.550	122.610	2595.37	-143.00	-101.63	123.75	1742884.96	14605744.69	40°12'59.0185"N	80°37'58.6112"W	160.13	129.396	2.12
2703.00	18.090	120.890	2682.01	-165.98	-116.28	147.43	1742908.63	14605730.04	40°12'58.8728"N	80°37'58.3067"W	187.77	128.264	0.83
2793.00	19.240	122.230	2767.27	-189.70	-131.36	171.96	1742933.16	14605714.97	40°12'58.7227"N	80°37'57.9912"W	216.40	127.376	1.36
2884.00	19.860	122.980	2853.03	-215.08	-147.77	197.61	1742958.80	14605698.56	40°12'58.5595"N	80°37'57.6614"W	246.76	126.789	0.74
2977.00	20.810	121.810	2940.23	-241.95	-165.08	224.90	1742986.08	14605681.26	40°12'58.3874"N	80°37'57.3106"W	278.99	126.279	1.11
3067.00	20.400	118.720	3024.47	-267.61	-181.05	252.25	1743013.41	14605665.30	40°12'58.2285"N	80°37'56.9590"W	310.49	125.668	1.29
3158.00	19.880	118.640	3109.91	-292.48	-196.08	279.74	1743040.89	14605650.27	40°12'58.0788"N	80°37'56.6054"W	341.62	125.029	0.57
3249.00	19.460	117.820	3195.60	-316.65	-210.57	306.72	1743067.86	14605635.79	40°12'57.9345"N	80°37'56.2584"W	372.05	124.471	0.55
3343.00	20.030	120.850	3284.07	-342.07	-226.14	334.39	1743095.52	14605620.23	40°12'57.7795"N	80°37'55.9025"W	403.68	124.069	1.25
3435.00	20.460	120.650	3370.39	-368.03	-242.41	361.75	1743122.87	14605603.96	40°12'57.6176"N	80°37'55.5507"W	435.46	123.827	0.47
3527.00	21.160	123.840	3456.39	-395.15	-259.86	389.38	1743150.49	14605586.52	40°12'57.4441"N	80°37'55.1955"W	468.13	123.718	1.45
3618.00	20.810	122.380	3541.36	-422.48	-277.66	416.67	1743177.77	14605568.73	40°12'57.2670"N	80°37'54.8447"W	500.71	123.679	0.69
3709.00	21.130	124.650	3626.33	-449.90	-295.64	443.82	1743204.90	14605550.75	40°12'57.0882"N	80°37'54.4957"W	533.27	123.669	0.96
3800.00	20.730	128.110	3711.33	-478.11	-314.91	469.98	1743231.06	14605531.49	40°12'56.8967"N	80°37'54.1595"W	565.73	123.824	1.43
3891.00	20.510	127.200	3796.50	-506.27	-334.49	495.35	1743256.42	14605511.92	40°12'56.7022"N	80°37'53.8335"W	597.71	124.029	0.43
3982.00	20.120	123.540	3881.84	-533.41	-352.78	521.10	1743282.15	14605493.64	40°12'56.5205"N	80°37'53.5026"W	629.28	124.097	1.46
4073.00	19.930	123.930	3967.34	-559.72	-370.08	547.01	1743308.06	14605476.34	40°12'56.3484"N	80°37'53.1695"W	660.44	124.080	0.26
4164.00	19.560	124.610	4052.99	-585.83	-387.39	572.42	1743333.45	14605459.04	40°12'56.1763"N	80°37'52.8429"W	691.18	124.089	0.48
4254.00	19.800	122.980	4137.73	-611.43	-404.25	597.60	1743358.63	14605442.19	40°12'56.0087"N	80°37'52.5192"W	721.49	124.076	0.67
4349.00	19.350	118.790	4227.25	-637.41	-420.58	624.90	1743385.91	14605425.86	40°12'55.8461"N	80°37'52.1683"W	753.25	123.942	1.55
4441.00	19.580	118.020	4313.99	-661.66	-435.17	651.86	1743412.87	14605411.28	40°12'55.7009"N	80°37'51.8214"W	783.77	123.726	0.37
4533.00	20.080	118.290	4400.53	-686.26	-449.89	679.38	1743440.37	14605396.56	40°12'55.5543"N	80°37'51.4676"W	814.84	123.513	0.55
4624.00	20.870	120.180	4485.79	-711.71	-465.45	707.15	1743468.13	14605381.01	40°12'55.3994"N	80°37'51.1104"W	846.58	123.353	1.13



Actual Wellpath Report

Brian Teslovich BRK 3H AWB_ awp 50' - 18905' Proj: 18930'
Page 4 of 10



REFERENCE WELLPATH IDENTIFICATION			
Operator	SWN PRODUCTION COMPANY, LLC	Well	Brian Teslovich BRK 3H
Field	Brooke	API	047-009-00311
Facility	Brian Teslovich BRK Pad	Wellbore	Brian Teslovich BRK 3H AWB
Slot	Slot 3H		

WELLPATH DATA (218 stations)

MD [ft]	Inclination [°]	Azimuth [°]	TVD [ft]	Vert Sect [ft]	North [ft]	East [ft]	Grid East [US ft]	Grid North [US ft]	Latitude	Longitude	Closure Dist [ft]	Closure Dir [°]	DLS [°/100ft]
4715.00	21.410	119.670	4570.66	-738.19	-481.82	735.59	1743496.56	14605364.65	40°12'55.2365"N	80°37'50.7447"W	879.34	123.225	0.63
4804.00	21.330	119.980	4653.54	-764.32	-497.95	763.73	1743524.69	14605348.53	40°12'55.0759"N	80°37'50.3829"W	911.72	123.104	0.16
4902.00	20.630	117.450	4745.05	-792.19	-514.81	794.49	1743555.44	14605331.67	40°12'54.9080"N	80°37'49.9873"W	946.70	122.942	1.17
4993.00	20.260	117.670	4830.31	-817.04	-529.52	822.67	1743583.61	14605316.97	40°12'54.7615"N	80°37'49.6248"W	978.35	122.768	0.42
5083.00	16.060	102.860	4915.86	-836.70	-539.54	848.63	1743609.56	14605306.96	40°12'54.6615"N	80°37'49.2907"W	1005.62	122.447	6.90
5175.00	13.350	82.410	5004.90	-847.29	-540.97	871.58	1743632.50	14605305.53	40°12'54.6464"N	80°37'48.9949"W	1025.82	121.827	6.32
5266.00	13.290	58.300	5093.52	-848.81	-534.08	890.91	1743651.82	14605312.41	40°12'54.7137"N	80°37'48.7454"W	1038.73	120.942	6.06
5357.00	15.230	32.130	5181.80	-840.69	-518.44	906.18	1743667.09	14605328.04	40°12'54.8676"N	80°37'48.5477"W	1044.01	119.774	7.33
5450.00	19.170	15.340	5270.68	-822.00	-493.35	916.73	1743677.63	14605353.13	40°12'55.1151"N	80°37'48.4104"W	1041.05	118.287	6.78
5540.00	24.200	5.680	5354.31	-794.48	-460.71	922.47	1743683.37	14605385.75	40°12'55.4374"N	80°37'48.3346"W	1031.12	116.539	6.84
5631.00	29.810	358.250	5435.38	-757.25	-419.49	923.63	1743684.53	14605426.95	40°12'55.8446"N	80°37'48.3175"W	1014.43	114.427	7.18
5723.00	37.110	351.780	5512.10	-709.26	-369.08	918.95	1743679.86	14605477.34	40°12'56.3430"N	80°37'48.3751"W	990.30	111.882	8.82
5814.00	45.010	348.150	5580.67	-651.25	-310.32	908.40	1743669.31	14605536.08	40°12'56.9241"N	80°37'48.5079"W	959.94	108.861	9.07
5905.00	51.820	343.960	5641.05	-584.25	-244.36	891.89	1743652.80	14605602.02	40°12'57.5766"N	80°37'48.7172"W	924.76	105.322	8.23
5995.00	60.080	343.890	5691.40	-510.43	-172.77	871.26	1743632.18	14605673.58	40°12'58.2849"N	80°37'48.9793"W	888.22	101.216	9.18
6086.00	68.240	339.730	5731.04	-429.01	-95.08	845.62	1743606.55	14605751.24	40°12'59.0536"N	80°37'49.3056"W	850.95	96.415	9.86
6177.00	75.730	339.990	5759.17	-342.72	-13.89	815.85	1743576.79	14605832.40	40°12'59.8572"N	80°37'49.6850"W	815.97	90.975	8.24
6268.00	84.260	337.710	5774.97	-253.29	69.60	783.53	1743544.48	14605915.85	40°13'0.6835"N	80°37'50.0972"W	786.61	84.924	9.69
6360.00	91.690	338.060	5778.21	-161.45	154.72	748.94	1743509.91	14606000.94	40°13'1.5261"N	80°37'50.5385"W	764.75	78.328	8.09
6451.00	90.740	336.940	5776.28	-70.50	238.77	714.12	1743475.10	14606084.96	40°13'2.3581"N	80°37'50.9828"W	752.98	71.512	1.61
6542.00	90.400	336.620	5775.38	20.49	322.39	678.25	1743439.24	14606168.55	40°13'3.1859"N	80°37'51.4408"W	750.97	64.577	0.51
6633.00	90.580	336.410	5774.60	111.48	405.85	641.98	1743402.99	14606251.97	40°13'4.0122"N	80°37'51.9037"W	759.51	57.700	0.30
6724.00	90.650	336.650	5773.62	202.48	489.32	605.74	1743366.77	14606335.41	40°13'4.8385"N	80°37'52.3664"W	778.69	51.069	0.27
6813.00	90.800	336.870	5772.50	291.46	571.09	570.63	1743331.66	14606417.15	40°13'5.6480"N	80°37'52.8147"W	807.32	44.977	0.30
6904.00	91.080	337.390	5771.00	382.44	654.93	535.27	1743296.32	14606500.95	40°13'6.4779"N	80°37'53.2660"W	845.84	39.259	0.65
6994.00	90.860	336.500	5769.48	472.41	737.72	500.03	1743261.09	14606583.72	40°13'7.2975"N	80°37'53.7159"W	891.21	34.129	1.02
7085.00	90.590	336.270	5768.33	563.41	821.10	463.58	1743224.65	14606667.06	40°13'8.1229"N	80°37'54.1813"W	942.92	29.448	0.39
7175.00	90.220	335.840	5767.69	653.40	903.35	427.05	1743188.14	14606749.28	40°13'8.9372"N	80°37'54.6477"W	999.20	25.302	0.63
7267.00	90.710	336.610	5766.95	745.40	987.54	389.96	1743151.07	14606833.43	40°13'9.7706"N	80°37'55.1213"W	1061.74	21.548	0.99
7359.00	90.860	335.990	5765.69	837.39	1071.77	352.99	1743114.11	14606917.63	40°13'10.6045"N	80°37'55.5935"W	1128.40	18.229	0.69



Actual Wellpath Report

Brian Teslovich BRK 3H AWB_ awp 50' - 18905' Proj: 18930'
Page 5 of 10



REFERENCE WELLPATH IDENTIFICATION			
Operator	SWN PRODUCTION COMPANY, LLC	Well	Brian Teslovich BRK 3H
Field	Brooke	API	047-009-00311
Facility	Brian Teslovich BRK Pad	Wellbore	Brian Teslovich BRK 3H AWB
Slot	Slot 3H		

WELLPATH DATA (218 stations)													
MD [ft]	Inclination [°]	Azimuth [°]	TVD [ft]	Vert Sect [ft]	North [ft]	East [ft]	Grid East [US ft]	Grid North [US ft]	Latitude	Longitude	Closure Dist [ft]	Closure Dir [°]	DLS [°/100ft]
7450.00	90.800	336.510	5764.37	928.38	1155.05	316.34	1743077.48	14607000.88	40°13'11.4290"N	80°37'56.0614"W	1197.59	15.316	0.58
7543.00	90.740	336.790	5763.12	1021.37	1240.43	279.48	1743040.63	14607086.23	40°13'12.2742"N	80°37'56.5320"W	1271.53	12.697	0.31
7634.00	91.050	337.070	5761.70	1112.35	1324.14	243.83	1743004.99	14607169.91	40°13'13.1029"N	80°37'56.9871"W	1346.40	10.434	0.46
7725.00	90.920	337.090	5760.13	1203.32	1407.95	208.39	1742969.57	14607253.68	40°13'13.9325"N	80°37'57.4395"W	1423.28	8.419	0.14
7817.00	91.170	337.020	5758.45	1295.29	1492.65	172.53	1742933.73	14607338.35	40°13'14.7710"N	80°37'57.8972"W	1502.59	6.594	0.28
7909.00	90.460	336.020	5757.15	1387.28	1577.02	135.88	1742897.09	14607422.69	40°13'15.6063"N	80°37'58.3652"W	1582.87	4.925	1.33
7999.00	90.740	336.250	5756.20	1477.28	1659.32	99.47	1742860.69	14607504.96	40°13'16.4210"N	80°37'58.8302"W	1662.30	3.431	0.40
8090.00	91.050	336.270	5754.78	1568.26	1742.61	62.84	1742824.08	14607588.21	40°13'17.2456"N	80°37'59.2979"W	1743.75	2.065	0.34
8182.00	90.800	335.920	5753.30	1660.25	1826.71	25.57	1742786.82	14607672.28	40°13'18.0781"N	80°37'59.7740"W	1826.89	0.802	0.47
8273.00	91.600	337.330	5751.39	1751.23	1910.22	-10.53	1742750.74	14607755.76	40°13'18.9049"N	80°38'0.2349"W	1910.25	359.684	1.78
8364.00	91.320	337.460	5749.07	1842.17	1994.20	-45.50	1742715.78	14607839.71	40°13'19.7362"N	80°38'0.6812"W	1994.72	358.693	0.34
8454.00	90.740	336.620	5747.45	1932.15	2077.06	-80.60	1742680.69	14607922.53	40°13'20.5564"N	80°38'1.1293"W	2078.62	357.778	1.13
8546.00	90.860	336.230	5746.17	2024.14	2161.37	-117.39	1742643.92	14608006.81	40°13'21.3910"N	80°38'1.5991"W	2164.56	356.891	0.44
8637.00	91.140	336.650	5744.58	2115.12	2244.77	-153.76	1742607.56	14608090.18	40°13'22.2167"N	80°38'2.0635"W	2250.03	356.082	0.55
8728.00	90.520	333.390	5743.26	2206.08	2327.24	-192.18	1742569.16	14608172.61	40°13'23.0332"N	80°38'2.5544"W	2335.16	355.279	3.65
8819.00	91.140	334.940	5741.95	2297.02	2409.13	-231.83	1742529.52	14608254.47	40°13'23.8441"N	80°38'3.0612"W	2420.26	354.503	1.83
8910.00	91.110	339.500	5740.16	2387.96	2493.00	-267.05	1742494.32	14608338.30	40°13'24.6742"N	80°38'3.5107"W	2507.26	353.886	5.01
9001.00	90.550	334.610	5738.84	2478.91	2576.76	-302.51	1742458.87	14608422.04	40°13'25.5034"N	80°38'3.9635"W	2594.46	353.304	5.41
9093.00	91.170	336.380	5737.46	2570.89	2660.46	-340.66	1742420.73	14608505.70	40°13'26.3321"N	80°38'4.4509"W	2682.18	352.703	2.04
9183.00	91.510	336.710	5735.35	2660.86	2743.00	-376.47	1742384.93	14608588.21	40°13'27.1492"N	80°38'4.9082"W	2768.72	352.185	0.53
9275.00	90.650	336.280	5733.62	2752.84	2827.35	-413.16	1742348.26	14608672.53	40°13'27.9842"N	80°38'5.3766"W	2857.38	351.686	1.05
9365.00	91.020	336.140	5732.31	2842.83	2909.70	-449.46	1742311.98	14608754.84	40°13'28.7994"N	80°38'5.8403"W	2944.21	351.219	0.44
9456.00	91.050	336.260	5730.66	2933.82	2992.94	-486.18	1742275.27	14608838.06	40°13'29.6236"N	80°38'6.3092"W	3032.18	350.773	0.14
9547.00	90.860	336.570	5729.15	3024.80	3076.33	-522.58	1742238.88	14608921.41	40°13'30.4490"N	80°38'6.7741"W	3120.40	350.359	0.40
9638.00	91.230	336.810	5727.49	3115.78	3159.89	-558.58	1742202.89	14609004.94	40°13'31.2762"N	80°38'7.2338"W	3208.88	349.975	0.48
9730.00	91.170	336.670	5725.56	3207.76	3244.39	-594.91	1742166.58	14609089.41	40°13'32.1128"N	80°38'7.6976"W	3298.49	349.609	0.17
9821.00	90.860	338.830	5723.95	3298.70	3328.60	-629.36	1742132.15	14609173.58	40°13'32.9463"N	80°38'8.1373"W	3387.58	349.293	2.40
9912.00	91.080	337.790	5722.41	3389.62	3413.14	-662.98	1742098.53	14609258.09	40°13'33.7831"N	80°38'8.5663"W	3476.94	349.008	1.17
10004.00	90.830	337.110	5720.87	3481.59	3498.10	-698.26	1742063.27	14609343.01	40°13'34.6240"N	80°38'9.0166"W	3567.11	348.711	0.79
10095.00	90.310	334.250	5719.97	3572.57	3581.01	-735.73	1742025.82	14609425.89	40°13'35.4448"N	80°38'9.4953"W	3655.81	348.390	3.19



Actual Wellpath Report

Brian Teslovich BRK 3H AWB_ awp 50' - 18905' Proj: 18930'
Page 6 of 10



REFERENCE WELLPATH IDENTIFICATION			
Operator	SWN PRODUCTION COMPANY, LLC	Well	Brian Teslovich BRK 3H
Field	Brooke	API	047-009-00311
Facility	Brian Teslovich BRK Pad	Wellbore	Brian Teslovich BRK 3H AWB
Slot	Slot 3H		

WELLPATH DATA (218 stations)

MD [ft]	Inclination [°]	Azimuth [°]	TVD [ft]	Vert Sect [ft]	North [ft]	East [ft]	Grid East [US ft]	Grid North [US ft]	Latitude	Longitude	Closure Dist [ft]	Closure Dir [°]	DLS [°/100ft]
10185.00	91.480	335.540	5718.56	3662.53	3662.49	-773.91	1741987.65	14609507.34	40°13'36.2516"N	80°38'9.9832"W	3743.37	348.069	1.93
10276.00	91.020	336.900	5716.58	3753.51	3745.75	-810.59	1741950.98	14609590.56	40°13'37.0758"N	80°38'10.4518"W	3832.45	347.789	1.58
10367.00	91.790	334.070	5714.35	3844.47	3828.51	-848.34	1741913.25	14609673.30	40°13'37.8952"N	80°38'10.9340"W	3921.37	347.506	3.22
10458.00	90.710	335.560	5712.36	3935.42	3910.83	-887.05	1741874.56	14609755.59	40°13'38.7103"N	80°38'11.4287"W	4010.17	347.220	2.02
10550.00	90.740	333.360	5711.20	4027.36	3993.83	-926.71	1741834.91	14609838.56	40°13'39.5321"N	80°38'11.9357"W	4099.94	346.937	2.39
10641.00	90.430	335.140	5710.27	4118.31	4075.79	-966.24	1741795.40	14609920.48	40°13'40.3435"N	80°38'12.4410"W	4188.76	346.663	1.99
10731.00	90.890	335.230	5709.23	4208.29	4157.47	-1004.01	1741757.64	14610002.13	40°13'41.1522"N	80°38'12.9236"W	4276.99	346.423	0.52
10821.00	90.830	335.210	5707.88	4298.26	4239.18	-1041.73	1741719.94	14610083.80	40°13'41.9612"N	80°38'13.4056"W	4365.30	346.194	0.07
10913.00	90.030	335.860	5707.19	4390.26	4322.91	-1079.83	1741681.85	14610167.51	40°13'42.7902"N	80°38'13.8924"W	4455.74	345.975	1.12
11004.00	90.860	336.810	5706.48	4481.25	4406.26	-1116.35	1741645.34	14610250.82	40°13'43.6152"N	80°38'14.3589"W	4545.47	345.783	1.39
11094.00	90.680	332.710	5705.27	4571.20	4487.64	-1154.72	1741606.99	14610332.17	40°13'44.4210"N	80°38'14.8492"W	4633.82	345.570	4.56
11186.00	90.250	335.700	5704.53	4663.13	4570.46	-1194.74	1741566.98	14610414.96	40°13'45.2410"N	80°38'15.3609"W	4724.04	345.350	3.28
11277.00	91.050	336.670	5703.49	4754.12	4653.71	-1231.49	1741530.25	14610498.17	40°13'46.0651"N	80°38'15.8302"W	4813.89	345.178	1.38
11367.00	90.800	336.670	5702.04	4844.11	4736.34	-1267.12	1741494.63	14610580.77	40°13'46.8831"N	80°38'16.2854"W	4902.91	345.022	0.28
11459.00	90.620	337.520	5700.90	4936.09	4821.07	-1302.93	1741458.84	14610665.47	40°13'47.7219"N	80°38'16.7425"W	4994.03	344.877	0.94
11549.00	91.200	336.970	5699.47	5026.06	4904.06	-1337.73	1741424.05	14610748.43	40°13'48.5434"N	80°38'17.1869"W	5083.24	344.742	0.89
11639.00	91.200	336.760	5697.59	5116.03	4986.80	-1373.09	1741388.71	14610831.14	40°13'49.3625"N	80°38'17.6384"W	5172.39	344.605	0.23
11730.00	91.230	338.330	5695.66	5206.98	5070.88	-1407.84	1741353.97	14610915.18	40°13'50.1947"N	80°38'18.0820"W	5262.68	344.484	1.73
11821.00	90.550	337.180	5694.24	5297.93	5155.10	-1442.28	1741319.54	14610999.37	40°13'51.0283"N	80°38'18.5216"W	5353.05	344.370	1.47
11912.00	90.800	337.080	5693.17	5388.91	5238.94	-1477.64	1741284.19	14611083.17	40°13'51.8582"N	80°38'18.9732"W	5443.33	344.249	0.30
12003.00	90.890	336.790	5691.83	5479.89	5322.65	-1513.29	1741248.56	14611166.86	40°13'52.6869"N	80°38'19.4284"W	5533.60	344.129	0.33
12094.00	91.260	336.500	5690.12	5570.87	5406.18	-1549.36	1741212.50	14611250.35	40°13'53.5138"N	80°38'19.8890"W	5623.82	344.008	0.52
12186.00	91.750	336.560	5687.71	5662.84	5490.54	-1585.99	1741175.89	14611334.68	40°13'54.3489"N	80°38'20.3569"W	5715.02	343.888	0.54
12279.00	91.230	338.660	5685.29	5755.77	5576.50	-1621.40	1741140.49	14611420.60	40°13'55.1997"N	80°38'20.8089"W	5807.43	343.788	2.33
12370.00	90.280	335.260	5684.09	5846.74	5660.22	-1657.01	1741104.90	14611504.29	40°13'56.0285"N	80°38'21.2636"W	5897.77	343.683	3.88
12460.00	92.740	337.310	5681.72	5936.70	5742.58	-1693.19	1741068.73	14611586.62	40°13'56.8438"N	80°38'21.7258"W	5986.99	343.572	3.56
12552.00	90.250	337.330	5679.32	6028.64	5827.43	-1728.64	1741033.29	14611671.44	40°13'57.6837"N	80°38'22.1785"W	6078.41	343.478	2.71
12643.00	90.740	336.710	5678.53	6119.62	5911.20	-1764.17	1740997.78	14611755.18	40°13'58.5130"N	80°38'22.6322"W	6168.84	343.383	0.87
12733.00	91.230	334.960	5676.98	6209.61	5993.30	-1801.01	1740960.96	14611837.24	40°13'59.3257"N	80°38'23.1028"W	6258.06	343.274	2.02
12824.00	91.600	336.380	5674.74	6300.57	6076.19	-1838.49	1740923.49	14611920.10	40°14'0.1463"N	80°38'23.5817"W	6348.24	343.166	1.61

REFERENCE WELLPATH IDENTIFICATION				
Operator	SWN PRODUCTION COMPANY, LLC		Well	Brian Teslovich BRK 3H
Field	Brooke		API	047-009-00311
Facility	Brian Teslovich BRK Pad		Wellbore	Brian Teslovich BRK 3H AWB
Slot	Slot 3H			

WELLPATH DATA (218 stations)													
MD [ft]	Inclination [°]	Azimuth [°]	TVD [ft]	Vert Sect [ft]	North [ft]	East [ft]	Grid East [US ft]	Grid North [US ft]	Latitude	Longitude	Closure Dist [ft]	Closure Dir [°]	DLS [°/100ft]
12915.00	91.420	336.080	5672.34	6391.54	6159.44	-1875.15	1740886.84	14612003.32	40°14'0.9705"N	80°38'24.0501"W	6438.55	343.068	0.38
13005.00	90.180	336.120	5671.08	6481.53	6241.72	-1911.61	1740850.40	14612085.56	40°14'1.7850"N	80°38'24.5159"W	6527.88	342.972	1.38
13096.00	90.770	336.500	5670.33	6572.53	6325.04	-1948.17	1740813.85	14612168.86	40°14'2.6099"N	80°38'24.9829"W	6618.27	342.881	0.77
13187.00	90.310	336.620	5669.47	6663.52	6408.53	-1984.37	1740777.67	14612252.31	40°14'3.4363"N	80°38'25.4453"W	6708.72	342.795	0.52
13277.00	90.340	336.090	5668.96	6753.52	6490.97	-2020.46	1740741.58	14612334.72	40°14'4.2524"N	80°38'25.9064"W	6798.16	342.710	0.59
13369.00	90.280	335.960	5668.46	6845.51	6575.03	-2057.85	1740704.22	14612418.75	40°14'5.0846"N	80°38'26.3840"W	6889.54	342.621	0.16
13461.00	90.180	335.630	5668.09	6937.51	6658.95	-2095.57	1740666.51	14612502.63	40°14'5.9153"N	80°38'26.8660"W	6980.90	342.531	0.37
13551.00	89.850	335.950	5668.07	7027.51	6741.03	-2132.47	1740629.62	14612584.68	40°14'6.7279"N	80°38'27.3376"W	7070.28	342.446	0.51
13643.00	91.570	337.700	5666.93	7119.49	6825.59	-2168.67	1740593.43	14612669.21	40°14'7.5650"N	80°38'27.7999"W	7161.83	342.374	2.67
13733.00	90.120	337.430	5665.60	7209.45	6908.77	-2203.02	1740559.10	14612752.35	40°14'8.3883"N	80°38'28.2384"W	7251.51	342.314	1.64
13824.00	90.430	335.060	5665.16	7300.44	6992.05	-2239.67	1740522.46	14612835.61	40°14'9.2128"N	80°38'28.7067"W	7342.00	342.239	2.63
13916.00	91.850	334.410	5663.33	7392.39	7075.23	-2278.93	1740483.22	14612918.75	40°14'10.0363"N	80°38'29.2085"W	7433.20	342.146	1.70
14008.00	91.080	336.570	5660.98	7484.35	7158.91	-2317.08	1740445.09	14613002.40	40°14'10.8648"N	80°38'29.6961"W	7524.55	342.065	2.49
14095.00	90.220	334.380	5659.99	7571.33	7238.05	-2353.19	1740408.99	14613081.51	40°14'11.6482"N	80°38'30.1575"W	7610.97	341.990	2.70
14185.00	91.940	334.200	5658.30	7661.27	7319.12	-2392.22	1740369.97	14613162.55	40°14'12.4509"N	80°38'30.6566"W	7700.15	341.900	1.92
14276.00	91.290	334.990	5655.73	7752.20	7401.29	-2431.25	1740330.96	14613244.68	40°14'13.2645"N	80°38'31.1555"W	7790.38	341.815	1.12
14367.00	91.200	335.260	5653.76	7843.16	7483.83	-2469.52	1740292.71	14613327.19	40°14'14.0816"N	80°38'31.6447"W	7880.75	341.738	0.31
14457.00	90.980	335.620	5652.04	7933.14	7565.67	-2506.92	1740255.32	14613409.00	40°14'14.8919"N	80°38'32.1227"W	7970.19	341.667	0.47
14548.00	90.620	335.510	5650.77	8024.12	7648.51	-2544.56	1740217.70	14613491.81	40°14'15.7120"N	80°38'32.6037"W	8060.67	341.598	0.41
14639.00	90.340	335.350	5650.01	8115.11	7731.27	-2582.39	1740179.87	14613574.53	40°14'16.5313"N	80°38'33.0873"W	8151.15	341.530	0.35
14729.00	90.580	335.070	5649.29	8205.10	7812.97	-2620.13	1740142.15	14613656.20	40°14'17.3402"N	80°38'33.5696"W	8240.61	341.461	0.41
14820.00	90.310	334.650	5648.58	8296.07	7895.35	-2658.79	1740103.51	14613738.55	40°14'18.1557"N	80°38'34.0638"W	8331.01	341.389	0.55
14910.00	91.910	334.480	5646.84	8386.02	7976.61	-2697.43	1740064.88	14613819.78	40°14'18.9603"N	80°38'34.5579"W	8420.36	341.316	1.79
15001.00	89.820	336.280	5645.46	8476.99	8059.32	-2735.33	1740026.99	14613902.45	40°14'19.7791"N	80°38'35.0424"W	8510.85	341.253	3.03
15092.00	90.950	334.360	5644.85	8567.97	8142.00	-2773.33	1739989.01	14613985.10	40°14'20.5976"N	80°38'35.5280"W	8601.36	341.190	2.45
15184.00	91.050	336.010	5643.25	8659.94	8225.49	-2811.93	1739950.43	14614068.56	40°14'21.4242"N	80°38'36.0214"W	8692.85	341.127	1.80
15275.00	90.950	335.920	5641.66	8750.93	8308.59	-2848.99	1739913.38	14614151.62	40°14'22.2468"N	80°38'36.4950"W	8783.47	341.073	0.15
15365.00	91.050	335.920	5640.09	8840.92	8390.74	-2885.71	1739876.68	14614233.75	40°14'23.0601"N	80°38'36.9642"W	8873.10	341.021	0.11
15456.00	90.830	335.160	5638.59	8931.90	8473.56	-2923.38	1739839.02	14614316.54	40°14'23.8801"N	80°38'37.4457"W	8963.67	340.966	0.87
15547.00	90.680	336.090	5637.40	9022.89	8556.44	-2960.93	1739801.48	14614399.38	40°14'24.7006"N	80°38'37.9256"W	9054.27	340.912	1.04

REFERENCE WELLPATH IDENTIFICATION

Operator	SWN PRODUCTION COMPANY, LLC	Well	Brian Teslovich BRK 3H
Field	Brooke	API	047-009-00311
Facility	Brian Teslovich BRK Pad	Wellbore	Brian Teslovich BRK 3H AWB
Slot	Slot 3H		

WELLPATH DATA (218 stations)

MD [ft]	Inclination [°]	Azimuth [°]	TVD [ft]	Vert Sect [ft]	North [ft]	East [ft]	Grid East [US ft]	Grid North [US ft]	Latitude	Longitude	Closure Dist [ft]	Closure Dir [°]	DLS [°/100ft]
15638.00	90.650	336.010	5636.34	9113.88	8639.60	-2997.87	1739764.56	14614482.51	40°14'25.5238"N	80°38'38.3976"W	9144.94	340.864	0.09
15729.00	90.680	335.860	5635.28	9204.87	8722.69	-3034.97	1739727.47	14614565.56	40°14'26.3463"N	80°38'38.8718"W	9235.60	340.815	0.17
15820.00	90.710	335.560	5634.18	9295.86	8805.62	-3072.40	1739690.05	14614648.47	40°14'27.1674"N	80°38'39.3502"W	9326.24	340.765	0.33
15911.00	89.820	335.930	5633.76	9386.86	8888.59	-3109.79	1739652.69	14614731.40	40°14'27.9887"N	80°38'39.8279"W	9416.89	340.717	1.06
16002.00	90.090	335.650	5633.83	9477.86	8971.59	-3147.10	1739615.38	14614814.37	40°14'28.8103"N	80°38'40.3048"W	9507.56	340.670	0.43
16094.00	89.780	336.310	5633.93	9569.86	9055.62	-3184.55	1739577.95	14614898.37	40°14'29.6422"N	80°38'40.7834"W	9599.25	340.625	0.79
16187.00	90.060	336.370	5634.06	9662.86	9140.80	-3221.87	1739540.64	14614983.52	40°14'30.4854"N	80°38'41.2603"W	9691.99	340.584	0.31
16278.00	90.120	336.420	5633.92	9753.85	9224.19	-3258.31	1739504.22	14615066.87	40°14'31.3109"N	80°38'41.7258"W	9782.75	340.545	0.09
16369.00	90.030	336.140	5633.80	9844.85	9307.50	-3294.92	1739467.63	14615150.15	40°14'32.1356"N	80°38'42.1936"W	9873.50	340.506	0.32
16460.00	89.880	335.410	5633.87	9935.85	9390.48	-3332.26	1739430.30	14615233.10	40°14'32.9571"N	80°38'42.6708"W	9964.19	340.463	0.82
16551.00	90.400	335.700	5633.65	10026.85	9473.33	-3369.92	1739392.66	14615315.91	40°14'33.7773"N	80°38'43.1521"W	10054.86	340.418	0.65
16642.00	90.890	335.390	5632.63	10117.83	9556.16	-3407.59	1739355.00	14615398.71	40°14'34.5973"N	80°38'43.6336"W	10145.53	340.375	0.64
16733.00	91.630	338.090	5630.63	10208.80	9639.73	-3443.51	1739319.09	14615482.25	40°14'35.4246"N	80°38'44.0926"W	10236.32	340.342	3.08
16823.00	90.490	337.040	5628.96	10298.75	9722.90	-3477.85	1739284.77	14615565.39	40°14'36.2478"N	80°38'44.5311"W	10326.19	340.318	1.72
16915.00	90.430	336.400	5628.22	10390.74	9807.41	-3514.21	1739248.42	14615649.87	40°14'37.0843"N	80°38'44.9956"W	10418.01	340.286	0.70
17006.00	90.520	336.280	5627.47	10481.74	9890.76	-3550.73	1739211.92	14615733.18	40°14'37.9094"N	80°38'45.4623"W	10508.79	340.252	0.16
17096.00	90.340	336.090	5626.79	10571.74	9973.09	-3587.07	1739175.59	14615815.48	40°14'38.7244"N	80°38'45.9266"W	10598.57	340.218	0.29
17187.00	90.650	336.080	5626.01	10662.73	10056.28	-3623.96	1739138.72	14615898.63	40°14'39.5479"N	80°38'46.3980"W	10689.33	340.182	0.34
17278.00	90.990	335.950	5624.70	10753.73	10139.41	-3660.94	1739101.75	14615981.74	40°14'40.3709"N	80°38'46.8707"W	10780.08	340.147	0.40
17369.00	90.030	336.440	5623.89	10844.72	10222.66	-3697.67	1739065.03	14616064.96	40°14'41.1950"N	80°38'47.3401"W	10870.86	340.114	1.18
17461.00	89.910	336.200	5623.94	10936.72	10306.92	-3734.62	1739028.10	14616149.18	40°14'42.0291"N	80°38'47.8123"W	10962.66	340.082	0.29
17554.00	90.090	335.720	5623.94	11029.72	10391.85	-3772.51	1738990.23	14616234.08	40°14'42.8699"N	80°38'48.2965"W	11055.42	340.048	0.55
17646.00	90.250	336.610	5623.67	11121.72	10476.00	-3809.68	1738953.06	14616318.20	40°14'43.7029"N	80°38'48.7716"W	11147.21	340.016	0.98
17739.00	89.910	336.170	5623.54	11214.72	10561.22	-3846.93	1738915.83	14616403.38	40°14'44.5464"N	80°38'49.2475"W	11240.03	339.986	0.60
17830.00	90.650	336.460	5623.09	11305.71	10644.55	-3883.48	1738879.29	14616486.68	40°14'45.3714"N	80°38'49.7147"W	11330.84	339.956	0.87
17920.00	90.710	339.000	5622.03	11395.67	10727.83	-3917.59	1738845.20	14616569.92	40°14'46.1956"N	80°38'50.1502"W	11420.76	339.939	2.82
18011.00	91.110	336.370	5620.58	11486.61	10811.99	-3952.13	1738810.67	14616654.06	40°14'47.0287"N	80°38'50.5913"W	11511.67	339.921	2.92
18102.00	90.620	336.200	5619.21	11577.60	10895.30	-3988.73	1738774.09	14616737.33	40°14'47.8533"N	80°38'51.0590"W	11602.48	339.893	0.57
18193.00	90.430	335.950	5618.37	11668.60	10978.48	-4025.63	1738737.20	14616820.47	40°14'48.6767"N	80°38'51.5306"W	11693.27	339.863	0.35
18285.00	90.490	336.190	5617.63	11760.59	11062.56	-4062.95	1738699.90	14616904.53	40°14'49.5091"N	80°38'52.0076"W	11785.07	339.833	0.27

REFERENCE WELLPATH IDENTIFICATION			
Operator	SWN PRODUCTION COMPANY, LLC	Well	Brian Teslovich BRK 3H
Field	Brooke	API	047-009-00311
Facility	Brian Teslovich BRK Pad	Wellbore	Brian Teslovich BRK 3H AWB
Slot	Slot 3H		

WELLPATH DATA (218 stations) † = interpolated, ‡ = extrapolated station													
MD [ft]	Inclination [°]	Azimuth [°]	TVD [ft]	Vert Sect [ft]	North [ft]	East [ft]	Grid East [US ft]	Grid North [US ft]	Latitude	Longitude	Closure Dist [ft]	Closure Dir [°]	DLS [°/100ft]
18376.00	90.490	336.110	5616.86	11851.59	11145.79	-4099.74	1738663.12	14616987.72	40°14'50.3330"N	80°38'52.4778"W	11875.88	339.805	0.09
18467.00	90.460	336.560	5616.10	11942.59	11229.14	-4136.26	1738626.61	14617071.04	40°14'51.1580"N	80°38'52.9446"W	11966.71	339.779	0.50
18558.00	90.710	335.820	5615.17	12033.58	11312.39	-4173.00	1738589.89	14617154.25	40°14'51.9822"N	80°38'53.4140"W	12057.53	339.752	0.86
18648.00	90.580	336.150	5614.16	12123.58	11394.59	-4209.62	1738553.28	14617236.43	40°14'52.7959"N	80°38'53.8822"W	12147.33	339.724	0.39
18739.00	90.890	336.120	5612.99	12214.57	11477.80	-4246.44	1738516.48	14617319.61	40°14'53.6196"N	80°38'54.3527"W	12238.14	339.697	0.34
18829.00	90.550	336.860	5611.86	12304.56	11560.32	-4282.34	1738480.59	14617402.10	40°14'54.4365"N	80°38'54.8114"W	12328.00	339.674	0.90
18905.00	90.770	337.070	5610.99	12380.55	11630.26	-4312.07	1738450.87	14617472.00	40°14'55.1288"N	80°38'55.1913"W	12403.91	339.657	0.40
18930.00‡	90.770	337.070	5610.65	12405.54	11653.28	-4321.81	1738441.13	14617495.02	40°14'55.3567"N	80°38'55.3158"W	12428.88	339.652	0.00

HOLE & CASING SECTIONS									
- Ref Wellbore: Brian Teslovich BRK 3H AWB Ref Wellpath: Brian Teslovich BRK 3H AWB_awp 50' - 18905' Proj: 18930'									
String/Diameter	Start MD [ft]	End MD [ft]	Interval [ft]	Start TVD [ft]	End TVD [ft]	Start N/S [ft]	Start E/W [ft]	End N/S [ft]	End E/W [ft]
13.375in Casing	26.00	323.00	297.00	26.00	323.00	0.00	0.00	-0.11	-0.36

TARGETS								
Name	TVD [ft]	North [ft]	East [ft]	Grid East [US ft]	Grid North [US ft]	Latitude	Longitude	Shape
Brian Teslovich BRK 3H BHL Rev-1	5634.17	11654.66	-4327.47	1738435.47	14617496.39	40°14'55.3705"N	80°38'55.3887"W	point
Brian Teslovich BRK 3H LP Rev 3	5778.00	136.92	767.12	1743528.08	14605983.14	40°13'1.3494"N	80°37'50.3051"W	point



Actual Wellpath Report

Brian Teslovich BRK 3H AWB_awp 50' - 18905' Proj: 18930'
Page 10 of 10



REFERENCE WELLPATH IDENTIFICATION			
Operator	SWN PRODUCTION COMPANY, LLC	Well	Brian Teslovich BRK 3H
Field	Brooke	API	047-009-00311
Facility	Brian Teslovich BRK Pad	Wellbore	Brian Teslovich BRK 3H AWB
Slot	Slot 3H		

WELLPATH COMPOSITION - Ref Wellbore: Brian Teslovich BRK 3H AWB Ref Wellpath: Brian Teslovich BRK 3H AWB_awp 50' - 18905' Proj: 18930'					
Start MD [ft]	End MD [ft]	Positional Uncertainty Model	Log Name/Comment	Wellbore	Survey Date
26.00	500.00	Gyrodata 2015 - GC+WIR+DPIPE	1 Imported Gyrodata 50' - 492'	Brian Teslovich BRK 3H AWB	11/9/2021
500.00	4804.00	OWSG MWD rev2 + HRGM	2 Tally MWD 550' - 4804'	Brian Teslovich BRK 3H AWB	11/9/2021
4804.00	18930.00	BH AutoTrak Curve/eXpress (2019) (HRGM, Short spacing)	3 BH MWD 4902' - 18905'	Brian Teslovich BRK 3H AWB	11/11/2021