

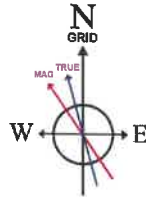
Location: Brooke County, WV  
Field: Brooke  
Facility: Brian Teslovich BRK Pad

Slot: Slot 5H  
Well: Brian Teslovich BRK 5H  
Wellbore: Brian Teslovich BRK 5H PWB

Plot reference wellpath is Brian Teslovich BRK 5H AWB_awp 100' - 19462' Proj: 19487	Grid System: NAD83 / UTM Zone 17 North, US feet
True vertical depths are referenced to SDC 40 (KB)	North Reference: Grid north
Reference wellpath measured depths are referenced to SDC 40 (KB)	Scale: True distance
SDC 40 (KB) to Mean Sea Level: 1175.5 feet	Coordinates are in feet referenced to Slot
Mean Sea Level to Ground level (At Slot: Slot 5H): -1149.5 feet	Depths are in feet
Offset wellpath MDs are referenced to each path's default MD datum	Created by: tranlam on 2021-11-08; Database: WA_MPL_EASTERNUS_Defn

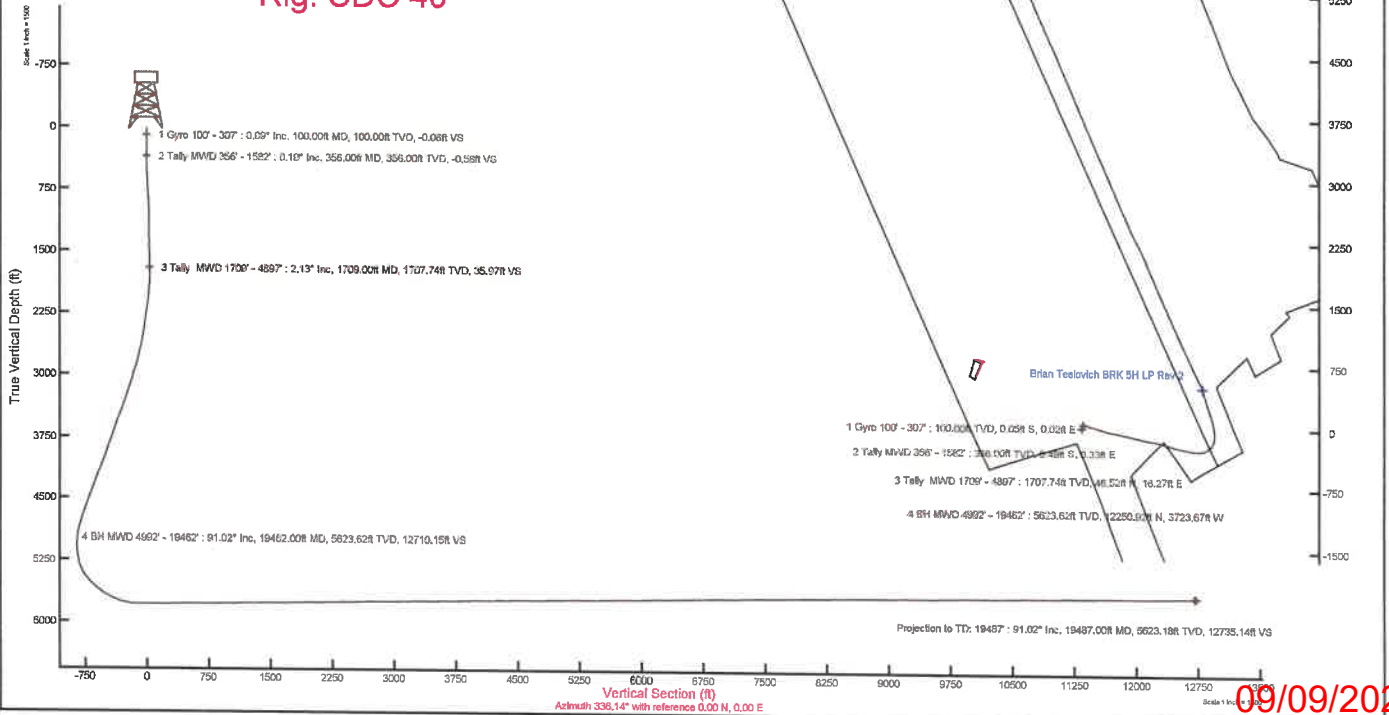
### Bottom Hole Location

MD (ft)	Inc (°)	Az (°)	TVD (ft)	Local N (ft)	Local E (ft)	Grid East (US ft)	Grid North (US ft)	Latitude	Longitude
19487.00	91.020	336.610	5623.18	12273.86	-3733.59	1739037.87	14618109.08	40°15'1.4037"N	80°38'47.5855"W



HDGM2021v11.0 (1900.0 to 2022.0) Dip: 67.26° Field: 52164 nT  
Magnetic North is 8.20 degrees West of True North (at 10/23/2021)  
Grid North is 0.24 degrees East of True North  
To correct azimuth from True to Grid subtract 0.24 degrees  
To correct azimuth from Magnetic to Grid subtract 8.44 degrees

**API: 47009003170000**  
**BH Job: 111083172**  
**Duration: 10-30-2021 to 11-03-2021**  
**Rig: SDC 40**



**REFERENCE WELLPATH IDENTIFICATION**

Operator	<b>SWN PRODUCTION COMPANY, LLC</b>	Well	<b>Brian Teslovich BRK 5H</b>
Field	<b>Brooke</b>	API	<b>047-009-00317</b>
Facility	<b>Brian Teslovich BRK Pad</b>	Wellbore	<b>Brian Teslovich BRK 5H AWB</b>
Slot	<b>Slot 5H</b>		

**REPORT SETUP INFORMATION**

Projection System	<b>NAD83 / UTM Zone 17 North, US feet</b>	Software System	<b>WellArchitect® 6.0</b>
North Reference	<b>Grid</b>	User	<b>Tranlam</b>
Scale	<b>0.999612</b>	Report Generated	<b>11/8/2021 at 9:34:03 AM</b>
Convergence at slot	<b>0.24° East</b>	Database	<b>WA_MPL_EASTERNUS_Defn</b>

**WELLPATH LOCATION**

	Local coordinates		Grid coordinates		Geographic coordinates	
	North[ft]	East[ft]	Easting[US ft]	Northing[US ft]	Latitude	Longitude
Slot Location	-11.35	16.34	<b>1742770.00</b>	<b>14605840.01</b>	40°12'59.9655"N	80°38'0.0885"W
Facility Reference Pt			<b>1742753.67</b>	<b>14605851.36</b>	40°13'0.0784"N	80°38'0.2985"W
Field Reference Pt			<b>0.00</b>	<b>0.00</b>	0°00'0.0000"	85°29'19.4780"W

**WELLPATH DATUM**

Calculation method	<b>Minimum curvature</b>	SDC 40 (KB) to Facility Vertical Datum	<b>1175.50ft</b>
Horizontal Reference Pt	<b>Slot</b>	SDC 40 (KB) to Mean Sea Level	<b>1175.50ft</b>
Vertical Reference Pt	<b>SDC 40 (KB)</b>	SDC 40 (KB) to Ground Level at Slot (Slot 5H)	<b>26.00ft</b>
MD Reference Pt	<b>SDC 40 (KB)</b>	Section Origin	<b>N 0.00, E 0.00 ft</b>
Field Vertical Reference	<b>Mean Sea Level</b>	Section Azimuth	<b>336.14°</b>

REFERENCE WELLPATH IDENTIFICATION				
Operator	SWN PRODUCTION COMPANY, LLC		Well	Brian Teslovich BRK 5H
Field	Brooke		API	047-009-00317
Facility	Brian Teslovich BRK Pad		Wellbore	Brian Teslovich BRK 5H AWB
Slot	Slot 5H			

WELLPATH DATA (221 stations) † = interpolated, ‡ = extrapolated station													
MD [ft]	Inclination [°]	Azimuth [°]	TVD [ft]	Vert Sect [ft]	North [ft]	East [ft]	Grid East [US ft]	Grid North [US ft]	Latitude	Longitude	Closure Dist [ft]	Closure Dir [°]	DLS [°/100ft]
0.00†	0.000	155.970	0.00	0.00	0.00	0.00	1742770.00	14605840.01	40°12'59.9655"N	80°38'0.0885"W	0.00	0.000	0.00
26.00	0.000	155.970	26.00	0.00	0.00	0.00	1742770.00	14605840.01	40°12'59.9655"N	80°38'0.0885"W	0.00	0.000	0.00
100.00	0.090	155.970	100.00	-0.06	-0.05	0.02	1742770.02	14605839.96	40°12'59.9650"N	80°38'0.0882"W	0.06	155.970	0.12
150.00	0.030	120.180	150.00	-0.11	-0.10	0.05	1742770.05	14605839.91	40°12'59.9646"N	80°38'0.0878"W	0.11	151.916	0.14
200.00	0.240	168.700	200.00	-0.22	-0.20	0.08	1742770.08	14605839.81	40°12'59.9635"N	80°38'0.0874"W	0.22	157.984	0.44
250.00	0.090	78.400	250.00	-0.33	-0.30	0.14	1742770.14	14605839.71	40°12'59.9626"N	80°38'0.0867"W	0.33	154.672	0.51
300.00	0.150	138.100	300.00	-0.40	-0.34	0.22	1742770.22	14605839.67	40°12'59.9622"N	80°38'0.0856"W	0.41	146.657	0.26
307.00	0.180	149.500	307.00	-0.42	-0.36	0.24	1742770.24	14605839.65	40°12'59.9620"N	80°38'0.0855"W	0.43	146.547	0.63
356.00	0.190	139.000	356.00	-0.58	-0.48	0.33	1742770.33	14605839.53	40°12'59.9607"N	80°38'0.0843"W	0.58	145.891	0.07
417.00	0.410	21.700	417.00	-0.52	-0.36	0.48	1742770.47	14605839.65	40°12'59.9620"N	80°38'0.0824"W	0.59	126.991	0.86
466.00	1.090	359.440	465.99	0.03	0.27	0.54	1742770.54	14605840.28	40°12'59.9682"N	80°38'0.0816"W	0.60	63.147	1.48
508.00	1.530	9.560	507.98	0.87	1.22	0.62	1742770.62	14605841.23	40°12'59.9776"N	80°38'0.0804"W	1.37	27.045	1.18
599.00	2.450	9.170	598.93	3.51	4.34	1.14	1742771.14	14605844.35	40°13'0.0084"N	80°38'0.0736"W	4.49	14.667	1.01
689.00	3.290	2.040	688.81	7.45	8.82	1.53	1742771.53	14605848.83	40°13'0.0527"N	80°38'0.0682"W	8.95	9.870	1.01
780.00	4.410	1.530	779.61	12.96	14.93	1.72	1742771.72	14605854.93	40°13'0.1130"N	80°38'0.0655"W	15.03	6.577	1.23
871.00	4.200	4.850	870.35	19.04	21.75	2.10	1742772.10	14605861.75	40°13'0.1804"N	80°38'0.0603"W	21.85	5.506	0.36
961.00	3.570	19.130	960.15	23.98	27.68	3.29	1742773.29	14605867.68	40°13'0.2389"N	80°38'0.0446"W	27.87	6.785	1.28
1052.00	2.140	43.470	1051.03	26.71	31.59	5.39	1742775.39	14605871.59	40°13'0.2775"N	80°38'0.0173"W	32.04	9.685	2.03
1144.00	2.190	58.170	1142.97	27.61	33.76	8.07	1742778.06	14605873.76	40°13'0.2988"N	80°37'59.9827"W	34.71	13.437	0.60
1234.00	1.500	54.340	1232.92	28.09	35.36	10.48	1742780.48	14605875.35	40°13'0.3145"N	80°37'59.9515"W	36.88	16.517	0.78
1325.00	1.090	31.810	1323.90	28.82	36.79	11.91	1742781.90	14605876.78	40°13'0.3286"N	80°37'59.9330"W	38.66	17.938	0.71
1417.00	1.360	26.930	1415.88	30.01	38.50	12.86	1742782.86	14605878.50	40°13'0.3455"N	80°37'59.9206"W	40.59	18.475	0.31
1507.00	1.490	30.090	1505.85	31.37	40.47	13.93	1742783.93	14605880.46	40°13'0.3649"N	80°37'59.9067"W	42.80	19.000	0.17
1582.00	1.800	20.800	1580.82	32.78	42.41	14.84	1742784.84	14605882.41	40°13'0.3840"N	80°37'59.8949"W	44.93	19.287	0.54
1709.00	2.130	17.710	1707.74	35.97	46.52	16.27	1742786.26	14605886.52	40°13'0.4246"N	80°37'59.8763"W	49.29	19.272	0.27
1800.00	2.240	69.510	1798.69	37.13	48.76	18.45	1742788.44	14605888.75	40°13'0.4466"N	80°37'59.8481"W	52.13	20.725	2.10
1889.00	4.180	108.480	1887.55	34.84	48.34	23.15	1742793.15	14605888.33	40°13'0.4423"N	80°37'59.7875"W	53.60	25.595	3.16
1977.00	7.040	112.060	1975.12	28.81	45.30	31.20	1742801.18	14605885.29	40°13'0.4119"N	80°37'59.6840"W	55.00	34.556	3.27
2068.00	10.290	108.920	2065.07	19.28	40.57	44.06	1742814.04	14605880.56	40°13'0.3646"N	80°37'59.5184"W	59.89	47.362	3.61
2161.00	10.900	104.500	2156.49	8.18	35.67	60.43	1742830.40	14605875.67	40°13'0.3156"N	80°37'59.3077"W	70.17	59.447	1.09





# Actual Wellpath Report

Brian Teslovich BRK 5H AWB\_awp 100' - 19462' Proj: 19487'  
Page 3 of 10



## REFERENCE WELLPATH IDENTIFICATION

Operator	SWN PRODUCTION COMPANY, LLC	Well	Brian Teslovich BRK 5H
Field	Brooke	API	047-009-00317
Facility	Brian Teslovich BRK Pad	Wellbore	Brian Teslovich BRK 5H AWB
Slot	Slot 5H		

## WELLPATH DATA (221 stations)

MD [ft]	Inclination [°]	Azimuth [°]	TVD [ft]	Vert Sect [ft]	North [ft]	East [ft]	Grid East [US ft]	Grid North [US ft]	Latitude	Longitude	Closure Dist [ft]	Closure Dir [°]	DLS [°/100ft]
2252.00	12.370	107.090	2245.61	-3.55	30.65	78.08	1742848.04	14605870.65	40°13'0.2652"N	80°37'59.0804"W	83.88	68.566	1.71
2343.00	12.750	106.260	2334.44	-16.41	24.98	97.03	1742866.99	14605864.98	40°13'0.2084"N	80°37'58.8364"W	100.19	75.566	0.46
2434.00	12.850	100.720	2423.18	-28.62	20.28	116.62	1742886.57	14605860.28	40°13'0.1612"N	80°37'58.5842"W	118.37	80.134	1.35
2525.00	15.580	104.540	2511.39	-41.96	15.33	138.39	1742908.34	14605855.33	40°13'0.1114"N	80°37'58.3038"W	139.24	83.679	3.17
2615.00	17.390	110.540	2597.69	-58.88	7.58	162.69	1742932.63	14605847.58	40°13'0.0338"N	80°37'57.9910"W	162.87	87.334	2.76
2706.00	17.500	106.540	2684.51	-77.26	-1.09	188.54	1742958.47	14605838.92	40°12'59.9471"N	80°37'57.6582"W	188.54	90.332	1.32
2797.00	20.180	106.810	2770.62	-96.36	-9.53	216.69	1742986.60	14605830.49	40°12'59.8625"N	80°37'57.2958"W	216.90	92.518	2.95
2887.00	23.530	107.250	2854.14	-118.30	-19.35	248.71	1743018.62	14605820.67	40°12'59.7642"N	80°37'56.8835"W	249.46	94.448	3.73
2978.00	26.740	106.790	2936.52	-143.59	-30.65	285.67	1743055.56	14605809.37	40°12'59.6510"N	80°37'56.4077"W	287.31	96.124	3.53
3073.00	26.680	100.700	3021.39	-169.61	-40.79	327.10	1743096.97	14605799.24	40°12'59.5491"N	80°37'55.8743"W	329.63	97.108	2.88
3164.00	28.780	99.500	3101.94	-193.25	-48.20	368.78	1743138.64	14605791.83	40°12'59.4742"N	80°37'55.3373"W	371.92	97.446	2.39
3255.00	30.540	103.240	3181.02	-219.25	-57.11	412.90	1743182.74	14605782.92	40°12'59.3843"N	80°37'54.7691"W	416.83	97.875	2.81
3346.00	30.700	101.380	3259.33	-246.60	-66.99	458.18	1743228.00	14605773.05	40°12'59.2848"N	80°37'54.1860"W	463.05	98.318	1.06
3438.00	31.280	100.540	3338.20	-273.64	-75.99	504.69	1743274.49	14605764.05	40°12'59.1940"N	80°37'53.5870"W	510.37	98.563	0.79
3528.00	32.620	102.480	3414.57	-301.22	-85.51	551.34	1743321.13	14605754.54	40°12'59.0980"N	80°37'52.9861"W	557.94	98.816	1.88
3619.00	31.690	106.230	3491.62	-331.15	-97.49	598.25	1743368.01	14605742.56	40°12'58.9777"N	80°37'52.3821"W	606.14	99.255	2.42
3710.00	30.460	102.750	3569.56	-360.30	-109.26	643.70	1743413.45	14605730.79	40°12'58.8595"N	80°37'51.7968"W	652.91	99.634	2.39
3800.00	28.970	103.470	3647.72	-387.12	-119.37	687.15	1743456.88	14605720.68	40°12'58.7578"N	80°37'51.2373"W	697.44	99.855	1.70
3893.00	29.910	103.090	3728.72	-414.72	-129.87	731.64	1743501.35	14605710.19	40°12'58.6522"N	80°37'50.6644"W	743.07	100.066	1.03
3984.00	32.090	103.480	3806.71	-443.02	-140.65	777.25	1743546.94	14605699.42	40°12'58.5438"N	80°37'50.0771"W	789.87	100.257	2.41
4075.00	31.320	99.260	3884.14	-470.61	-150.09	824.10	1743593.78	14605689.98	40°12'58.4486"N	80°37'49.4736"W	837.66	100.322	2.58
4167.00	31.070	97.220	3962.84	-495.93	-156.92	871.26	1743640.92	14605683.15	40°12'58.3792"N	80°37'48.8661"W	885.27	100.210	1.18
4258.00	31.340	103.440	4040.70	-522.40	-165.37	917.58	1743687.22	14605674.70	40°12'58.2937"N	80°37'48.2694"W	932.36	100.217	3.55
4350.00	31.470	109.020	4119.23	-553.25	-178.76	963.56	1743733.19	14605661.32	40°12'58.1595"N	80°37'47.6774"W	980.01	100.510	3.16
4443.00	31.150	106.490	4198.69	-585.34	-193.50	1009.58	1743779.19	14605646.58	40°12'58.0120"N	80°37'47.0851"W	1027.96	100.850	1.45
4533.00	30.290	105.900	4276.06	-614.93	-206.33	1053.73	1743823.32	14605633.76	40°12'57.8834"N	80°37'46.5167"W	1073.74	101.079	1.01
4624.00	30.570	108.230	4354.53	-645.12	-219.85	1097.78	1743867.35	14605620.24	40°12'57.7479"N	80°37'45.9495"W	1119.58	101.325	1.33
4716.00	30.340	105.960	4433.84	-675.68	-233.56	1142.34	1743911.90	14605606.54	40°12'57.6106"N	80°37'45.3758"W	1165.98	101.555	1.28
4806.00	29.780	101.860	4511.74	-703.29	-244.41	1186.08	1743955.61	14605595.70	40°12'57.5016"N	80°37'44.8127"W	1211.00	101.644	2.36
4897.00	31.480	103.650	4590.05	-730.96	-254.66	1231.29	1744000.81	14605585.45	40°12'57.3984"N	80°37'44.2305"W	1257.35	101.685	2.12

REFERENCE WELLPATH IDENTIFICATION			
Operator	SWN PRODUCTION COMPANY, LLC	Well	Brian Teslovich BRK 5H
Field	Brooke	API	047-009-00317
Facility	Brian Teslovich BRK Pad	Wellbore	Brian Teslovich BRK 5H AWB
Slot	Slot 5H		

WELLPATH DATA (221 stations)													
MD [ft]	Inclination [°]	Azimuth [°]	TVD [ft]	Vert Sect [ft]	North [ft]	East [ft]	Grid East [US ft]	Grid North [US ft]	Latitude	Longitude	Closure Dist [ft]	Closure Dir [°]	DLS [°/100ft]
4992.00	31.770	100.170	4670.95	-760.06	-264.93	1280.01	1744049.51	14605575.18	40°12'57.2949"N	80°37'43.6030"W	1307.14	101.694	1.94
5083.00	30.750	98.280	4748.74	-785.84	-272.51	1326.62	1744096.10	14605567.60	40°12'57.2181"N	80°37'43.0027"W	1354.32	101.608	1.55
5174.00	30.580	97.350	4827.01	-810.21	-278.82	1372.59	1744142.06	14605561.30	40°12'57.1538"N	80°37'42.4103"W	1400.63	101.483	0.55
5264.00	27.920	91.900	4905.54	-831.24	-282.45	1416.37	1744185.82	14605557.67	40°12'57.1162"N	80°37'41.8462"W	1444.26	101.278	4.18
5356.00	24.600	79.250	4988.10	-844.96	-279.59	1456.76	1744226.19	14605560.53	40°12'57.1428"N	80°37'41.3255"W	1483.35	100.864	7.06
5447.00	24.260	67.570	5071.00	-849.73	-268.92	1492.67	1744262.09	14605571.20	40°12'57.2467"N	80°37'40.8620"W	1516.70	100.213	5.31
5539.00	24.190	52.940	5154.98	-845.89	-250.33	1525.21	1744294.61	14605589.78	40°12'57.4291"N	80°37'40.4415"W	1545.62	99.321	6.51
5630.00	26.440	46.310	5237.25	-834.76	-225.09	1554.75	1744324.14	14605615.01	40°12'57.6772"N	80°37'40.0594"W	1570.96	98.238	3.97
5720.00	29.250	32.280	5316.91	-815.68	-192.62	1581.01	1744350.40	14605647.46	40°12'57.9970"N	80°37'39.7191"W	1592.70	96.946	7.90
5812.00	33.330	11.790	5395.73	-782.51	-148.73	1598.24	1744367.61	14605691.34	40°12'58.4300"N	80°37'39.4947"W	1605.14	95.317	12.33
5903.00	40.890	4.960	5468.28	-736.01	-94.48	1605.93	1744375.31	14605745.56	40°12'58.9658"N	80°37'39.3926"W	1608.71	93.367	9.45
5993.00	47.390	354.880	5532.92	-678.71	-32.01	1605.52	1744374.90	14605808.02	40°12'59.5832"N	80°37'39.3945"W	1605.84	91.142	10.61
6085.00	50.640	350.250	5593.27	-612.12	36.81	1596.47	1744365.85	14605876.80	40°13'0.2636"N	80°37'39.5074"W	1596.90	88.679	5.19
6176.00	54.960	345.020	5648.30	-541.13	107.53	1580.87	1744350.26	14605947.50	40°13'0.9631"N	80°37'39.7047"W	1584.53	86.109	6.59
6267.00	61.240	341.170	5696.37	-464.49	181.36	1558.34	1744327.73	14606021.30	40°13'1.6936"N	80°37'39.9911"W	1568.86	83.362	7.78
6360.00	68.590	340.400	5735.77	-380.60	260.84	1530.62	1744300.03	14606100.75	40°13'2.4801"N	80°37'40.3441"W	1552.69	80.329	7.94
6450.00	74.750	343.950	5764.07	-295.70	342.13	1504.53	1744273.95	14606182.01	40°13'3.2845"N	80°37'40.6760"W	1542.94	77.189	7.80
6541.00	82.250	343.690	5782.20	-207.39	427.71	1479.70	1744249.12	14606267.55	40°13'4.1313"N	80°37'40.9915"W	1540.28	73.878	8.25
6633.00	90.580	338.560	5787.95	-116.02	514.48	1450.02	1744219.45	14606354.29	40°13'4.9899"N	80°37'41.3695"W	1538.58	70.465	10.63
6724.00	90.250	332.360	5787.29	-25.08	597.22	1412.24	1744181.69	14606436.99	40°13'5.8091"N	80°37'41.8520"W	1533.33	67.077	6.82
6815.00	90.150	334.920	5786.98	65.83	678.75	1371.84	1744141.30	14606518.49	40°13'6.6165"N	80°37'42.3684"W	1530.57	63.675	2.82
6905.00	90.650	335.240	5786.35	155.81	760.37	1333.92	1744103.40	14606600.08	40°13'7.4246"N	80°37'42.8528"W	1535.41	60.316	0.66
6996.00	91.200	335.600	5784.88	246.79	843.11	1296.07	1744065.56	14606682.79	40°13'8.2438"N	80°37'43.3362"W	1546.17	56.956	0.72
7087.00	90.830	336.230	5783.27	337.77	926.17	1258.94	1744028.45	14606765.82	40°13'9.0661"N	80°37'43.8104"W	1562.92	53.659	0.80
7178.00	90.860	334.940	5781.93	428.76	1009.02	1221.33	1743990.85	14606848.64	40°13'9.8864"N	80°37'44.2907"W	1584.23	50.438	1.42
7270.00	90.430	335.160	5780.89	520.74	1092.43	1182.53	1743952.06	14606932.02	40°13'10.7123"N	80°37'44.7865"W	1609.90	47.268	0.53
7361.00	90.550	335.400	5780.11	611.72	1175.09	1144.47	1743914.03	14607014.64	40°13'11.5306"N	80°37'45.2726"W	1640.32	44.244	0.29
7452.00	90.400	336.230	5779.36	702.72	1258.10	1107.19	1743876.76	14607097.62	40°13'12.3525"N	80°37'45.7487"W	1675.92	41.349	0.93
7543.00	90.950	336.810	5778.29	793.71	1341.56	1070.94	1743840.52	14607181.05	40°13'13.1787"N	80°37'46.2115"W	1716.59	38.600	0.88
7634.00	90.710	337.100	5776.97	884.69	1425.29	1035.32	1743804.92	14607264.74	40°13'14.0076"N	80°37'46.6662"W	1761.63	35.994	0.41



REFERENCE WELLPATH IDENTIFICATION			
Operator	SWN PRODUCTION COMPANY, LLC	Well	Brian Teslovich BRK 5H
Field	Brooke	API	047-009-00317
Facility	Brian Teslovich BRK Pad	Wellbore	Brian Teslovich BRK 5H AWB
Slot	Slot 5H		

WELLPATH DATA (221 stations)													
MD [ft]	Inclination [°]	Azimuth [°]	TVD [ft]	Vert Sect [ft]	North [ft]	East [ft]	Grid East [US ft]	Grid North [US ft]	Latitude	Longitude	Closure Dist [ft]	Closure Dir [°]	DLS ["/100ft]
7723.00	90.150	335.370	5776.30	973.68	1506.74	999.46	1743769.07	14607346.16	40°13'14.8139"N	80°37'47.1241"W	1808.08	33.557	2.04
7814.00	91.200	336.360	5775.23	1064.67	1589.77	962.25	1743731.88	14607429.16	40°13'15.6360"N	80°37'47.5993"W	1858.31	31.185	1.59
7904.00	90.980	336.940	5773.51	1154.65	1672.39	926.59	1743696.22	14607511.74	40°13'16.4538"N	80°37'48.0546"W	1911.92	28.989	0.69
7995.00	90.580	336.780	5772.28	1245.64	1756.06	890.83	1743660.48	14607595.38	40°13'17.2821"N	80°37'48.5110"W	1969.09	26.898	0.47
8085.00	91.480	337.040	5770.66	1335.61	1838.83	855.54	1743625.21	14607678.13	40°13'18.1016"N	80°37'48.9615"W	2028.12	24.951	1.04
8177.00	91.350	337.320	5768.39	1427.57	1923.61	819.87	1743589.55	14607762.87	40°13'18.9407"N	80°37'49.4168"W	2091.04	23.084	0.34
8269.00	91.080	337.390	5766.44	1519.53	2008.49	784.45	1743554.15	14607847.72	40°13'19.7811"N	80°37'49.8688"W	2156.25	21.334	0.30
8360.00	90.000	336.490	5765.58	1610.51	2092.22	748.81	1743518.52	14607931.41	40°13'20.6099"N	80°37'50.3238"W	2222.18	19.692	1.54
8453.00	91.020	334.750	5764.75	1703.50	2176.92	710.43	1743480.15	14608016.08	40°13'21.4484"N	80°37'50.8141"W	2289.91	18.074	2.17
8544.00	90.580	330.070	5763.48	1794.27	2257.54	668.30	1743438.04	14608096.67	40°13'22.2468"N	80°37'51.3529"W	2354.38	16.490	5.17
8635.00	91.200	334.080	5762.06	1885.01	2337.92	625.69	1743395.45	14608177.01	40°13'23.0429"N	80°37'51.8978"W	2420.19	14.983	4.46
8727.00	90.920	336.530	5760.36	1976.98	2421.48	587.27	1743357.04	14608260.55	40°13'23.8702"N	80°37'52.3887"W	2491.68	13.632	2.68
8819.00	91.050	336.510	5758.78	2068.97	2505.85	550.62	1743320.40	14608344.88	40°13'24.7055"N	80°37'52.8566"W	2565.63	12.393	0.14
8909.00	90.860	336.090	5757.28	2158.95	2588.25	514.45	1743284.25	14608427.25	40°13'25.5212"N	80°37'53.3185"W	2638.88	11.242	0.51
9000.00	90.710	336.090	5756.03	2249.94	2671.43	477.57	1743247.38	14608510.40	40°13'26.3447"N	80°37'53.7895"W	2713.78	10.136	0.16
9092.00	91.080	336.850	5754.60	2341.93	2755.77	440.84	1743210.67	14608594.71	40°13'27.1796"N	80°37'54.2584"W	2790.81	9.089	0.92
9183.00	91.380	336.570	5752.64	2432.90	2839.34	404.87	1743174.71	14608678.24	40°13'28.0069"N	80°37'54.7177"W	2868.06	8.115	0.45
9274.00	91.200	336.400	5750.60	2523.88	2922.76	368.57	1743138.43	14608761.63	40°13'28.8327"N	80°37'55.1812"W	2945.91	7.187	0.27
9364.00	91.290	337.100	5748.64	2613.85	3005.43	333.06	1743102.93	14608844.27	40°13'29.6511"N	80°37'55.6347"W	3023.83	6.324	0.78
9456.00	91.290	337.200	5746.57	2705.82	3090.19	297.34	1743067.22	14608928.99	40°13'30.4902"N	80°37'56.0906"W	3104.46	5.496	0.11
9547.00	90.400	336.730	5745.23	2796.79	3173.92	261.74	1743031.63	14609012.69	40°13'31.3191"N	80°37'56.5451"W	3184.70	4.714	1.11
9638.00	90.460	334.130	5744.54	2887.78	3256.67	223.90	1742993.81	14609095.41	40°13'32.1384"N	80°37'57.0285"W	3264.36	3.933	2.86
9729.00	90.920	336.740	5743.45	2978.76	3339.42	186.08	1742956.00	14609178.13	40°13'32.9576"N	80°37'57.5117"W	3344.60	3.189	2.91
9820.00	91.020	337.020	5741.91	3069.74	3423.10	150.35	1742920.29	14609261.78	40°13'33.7860"N	80°37'57.9678"W	3426.40	2.515	0.33
9911.00	90.860	337.000	5740.41	3160.71	3506.86	114.81	1742884.77	14609345.51	40°13'34.6152"N	80°37'58.4215"W	3508.74	1.875	0.18
10003.00	91.080	336.890	5738.86	3252.69	3591.50	78.79	1742848.76	14609430.11	40°13'35.4530"N	80°37'58.8814"W	3592.37	1.257	0.27
10093.00	90.860	337.230	5737.33	3342.67	3674.37	43.72	1742813.70	14609512.95	40°13'36.2734"N	80°37'59.3292"W	3674.63	0.682	0.45
10185.00	90.650	337.090	5736.12	3434.64	3759.15	8.01	1742778.00	14609597.70	40°13'37.1126"N	80°37'59.7850"W	3759.16	0.122	0.27
10275.00	91.140	337.320	5734.71	3524.62	3842.11	-26.86	1742743.15	14609680.62	40°13'37.9338"N	80°38'0.2301"W	3842.21	359.600	0.60
10366.00	91.020	336.760	5733.00	3615.59	3925.89	-62.35	1742707.68	14609764.37	40°13'38.7632"N	80°38'0.6832"W	3926.38	359.090	0.63

### REFERENCE WELLPATH IDENTIFICATION

Operator	SWN PRODUCTION COMPANY, LLC	Well	Brian Teslovich BRK 5H
Field	Brooke	API	047-009-00317
Facility	Brian Teslovich BRK Pad	Wellbore	Brian Teslovich BRK 5H AWB
Slot	Slot 5H		

### WELLPATH DATA (221 stations)

MD [ft]	Inclination [°]	Azimuth [°]	TVD [ft]	Vert Sect [ft]	North [ft]	East [ft]	Grid East [US ft]	Grid North [US ft]	Latitude	Longitude	Closure Dist [ft]	Closure Dir [°]	DLS [°/100ft]
10457.00	91.080	336.880	5731.33	3706.57	4009.53	-98.16	1742671.88	14609847.97	40°13'39.5911"N	80°38'1.1404"W	4010.73	358.598	0.15
10548.00	90.950	336.780	5729.72	3797.55	4093.17	-133.96	1742636.09	14609931.59	40°13'40.4192"N	80°38'1.5975"W	4095.37	358.125	0.18
10640.00	91.110	337.260	5728.07	3889.52	4177.86	-169.87	1742600.19	14610016.24	40°13'41.2575"N	80°38'2.0560"W	4181.31	357.672	0.55
10731.00	91.260	337.030	5726.18	3980.49	4261.70	-205.21	1742564.87	14610100.05	40°13'42.0874"N	80°38'2.5071"W	4266.63	357.243	0.30
10822.00	90.980	336.880	5724.41	4071.46	4345.42	-240.83	1742529.27	14610183.73	40°13'42.9162"N	80°38'2.9619"W	4352.09	356.828	0.35
10914.00	90.680	337.120	5723.07	4163.44	4430.10	-276.77	1742493.34	14610268.38	40°13'43.7544"N	80°38'3.4208"W	4438.73	356.425	0.42
11005.00	91.020	336.600	5721.72	4254.42	4513.77	-312.53	1742457.60	14610352.02	40°13'44.5827"N	80°38'3.8773"W	4524.57	356.039	0.68
11095.00	90.620	334.430	5720.43	4344.40	4595.66	-349.82	1742420.32	14610433.88	40°13'45.3934"N	80°38'4.3538"W	4608.95	355.647	2.45
11186.00	90.800	334.940	5719.31	4435.36	4677.91	-388.73	1742381.42	14610516.10	40°13'46.2079"N	80°38'4.8511"W	4694.04	355.250	0.59
11277.00	90.830	336.090	5718.01	4526.35	4760.72	-426.44	1742343.73	14610598.87	40°13'47.0277"N	80°38'5.3329"W	4779.78	354.881	1.26
11368.00	90.370	337.190	5717.06	4617.34	4844.25	-462.52	1742307.66	14610682.38	40°13'47.8546"N	80°38'5.7936"W	4866.28	354.546	1.31
11460.00	90.580	335.720	5716.30	4709.33	4928.59	-499.27	1742270.93	14610766.68	40°13'48.6895"N	80°38'6.2629"W	4953.81	354.216	1.61
11551.00	90.770	336.950	5715.22	4800.32	5011.93	-535.79	1742234.42	14610849.99	40°13'49.5145"N	80°38'6.7294"W	5040.49	353.898	1.37
11641.00	90.740	336.910	5714.04	4890.31	5094.73	-571.05	1742199.17	14610932.75	40°13'50.3341"N	80°38'7.1797"W	5126.63	353.605	0.06
11731.00	90.800	336.610	5712.83	4980.29	5177.42	-606.56	1742163.67	14611015.41	40°13'51.1527"N	80°38'7.6331"W	5212.83	353.318	0.34
11823.00	90.430	336.570	5711.84	5072.28	5261.84	-643.11	1742127.14	14611099.80	40°13'51.9884"N	80°38'8.0999"W	5300.99	353.032	0.40
11914.00	90.800	336.940	5710.87	5163.27	5345.45	-679.03	1742091.24	14611183.37	40°13'52.8161"N	80°38'8.5585"W	5388.40	352.761	0.57
12004.00	90.980	337.490	5709.47	5253.25	5428.41	-713.88	1742056.40	14611266.30	40°13'53.6374"N	80°38'9.0034"W	5475.15	352.508	0.64
12096.00	90.400	337.130	5708.36	5345.22	5513.28	-749.36	1742020.93	14611351.14	40°13'54.4775"N	80°38'9.4564"W	5563.98	352.260	0.74
12187.00	90.550	337.240	5707.60	5436.20	5597.16	-784.65	1741985.66	14611434.99	40°13'55.3078"N	80°38'9.9069"W	5651.89	352.020	0.20
12277.00	90.740	337.560	5706.59	5526.17	5680.25	-819.23	1741951.09	14611518.04	40°13'56.1302"N	80°38'10.3485"W	5739.02	351.793	0.41
12369.00	90.860	337.520	5705.31	5618.14	5765.26	-854.38	1741915.96	14611603.02	40°13'56.9717"N	80°38'10.7971"W	5828.22	351.570	0.14
12459.00	90.520	337.570	5704.22	5708.10	5848.43	-888.75	1741881.60	14611686.16	40°13'57.7950"N	80°38'11.2359"W	5915.57	351.359	0.38
12549.00	90.800	337.650	5703.19	5798.07	5931.64	-923.03	1741847.33	14611769.34	40°13'58.6187"N	80°38'11.6735"W	6003.03	351.155	0.32
12640.00	90.830	337.240	5701.89	5889.04	6015.67	-957.93	1741812.44	14611853.33	40°13'59.4505"N	80°38'12.1190"W	6091.46	350.952	0.45
12731.00	91.200	336.160	5700.28	5980.02	6099.23	-993.92	1741776.47	14611936.86	40°14'0.2777"N	80°38'12.5786"W	6179.69	350.745	1.25
12822.00	90.950	336.160	5698.57	6071.00	6182.45	-1030.69	1741739.71	14612020.05	40°14'1.1015"N	80°38'13.0484"W	6267.78	350.535	0.27
12913.00	91.080	335.890	5696.96	6161.98	6265.59	-1067.66	1741702.75	14612103.16	40°14'1.9246"N	80°38'13.5207"W	6355.90	350.330	0.33
13004.00	90.680	335.920	5695.56	6252.97	6348.65	-1104.81	1741665.62	14612186.19	40°14'2.7469"N	80°38'13.9953"W	6444.07	350.128	0.44
13096.00	91.260	336.140	5694.01	6344.96	6432.70	-1142.18	1741628.27	14612270.21	40°14'3.5790"N	80°38'14.4727"W	6533.32	349.932	0.67



REFERENCE WELLPATH IDENTIFICATION				
Operator	SWN PRODUCTION COMPANY, LLC		Well	Brian Teslovich BRK 5H
Field	Brooke		API	047-009-00317
Facility	Brian Teslovich BRK Pad		Wellbore	Brian Teslovich BRK 5H AWB
Slot	Slot 5H			

WELLPATH DATA (221 stations)													
MD [ft]	Inclination [°]	Azimuth [°]	TVD [ft]	Vert Sect [ft]	North [ft]	East [ft]	Grid East [US ft]	Grid North [US ft]	Latitude	Longitude	Closure Dist [ft]	Closure Dir [°]	DLS [°/100ft]
13189.00	91.230	336.090	5691.99	6437.94	6517.72	-1179.83	1741590.63	14612355.19	40°14'4.4206"N	80°38'14.9536"W	6623.64	349.740	0.06
13280.00	91.600	336.250	5689.74	6528.91	6600.94	-1216.58	1741553.89	14612438.37	40°14'5.2444"N	80°38'15.4231"W	6712.11	349.557	0.44
13370.00	91.110	335.210	5687.61	6618.88	6682.96	-1253.56	1741516.92	14612520.36	40°14'6.0564"N	80°38'15.8957"W	6799.51	349.376	1.28
13462.00	90.740	336.080	5686.12	6710.86	6766.76	-1291.50	1741479.00	14612604.13	40°14'6.8861"N	80°38'16.3804"W	6888.90	349.195	1.03
13553.00	90.980	336.380	5684.76	6801.85	6850.03	-1328.17	1741442.34	14612687.37	40°14'7.7104"N	80°38'16.8489"W	6977.60	349.027	0.42
13643.00	90.950	335.790	5683.24	6891.84	6932.29	-1364.65	1741405.88	14612769.60	40°14'8.5248"N	80°38'17.3149"W	7065.33	348.863	0.66
13734.00	90.650	335.790	5681.97	6982.83	7015.28	-1401.97	1741368.58	14612852.55	40°14'9.3464"N	80°38'17.7917"W	7154.00	348.699	0.33
13825.00	90.580	336.390	5681.00	7073.82	7098.46	-1438.85	1741331.71	14612935.71	40°14'10.1699"N	80°38'18.2628"W	7242.82	348.541	0.66
13915.00	90.650	336.940	5680.03	7163.81	7181.10	-1474.49	1741296.08	14613018.31	40°14'10.9879"N	80°38'18.7181"W	7330.91	348.397	0.62
14006.00	90.800	336.260	5678.88	7254.80	7264.61	-1510.63	1741259.96	14613101.78	40°14'11.8146"N	80°38'19.1797"W	7420.01	348.253	0.77
14097.00	91.110	337.510	5677.36	7345.78	7348.29	-1546.35	1741224.25	14613185.43	40°14'12.6429"N	80°38'19.6359"W	7509.23	348.116	1.42
14187.00	90.460	336.020	5676.13	7435.76	7430.98	-1581.85	1741188.77	14613268.09	40°14'13.4615"N	80°38'20.0893"W	7597.48	347.983	1.81
14279.00	90.400	335.980	5675.44	7527.76	7515.02	-1619.27	1741151.36	14613352.10	40°14'14.2935"N	80°38'20.5673"W	7687.49	347.840	0.08
14371.00	91.260	336.690	5674.11	7619.75	7599.27	-1656.19	1741114.45	14613436.32	40°14'15.1276"N	80°38'21.0390"W	7777.66	347.705	1.21
14461.00	90.890	337.190	5672.42	7709.72	7682.07	-1691.44	1741079.22	14613519.08	40°14'15.9471"N	80°38'21.4892"W	7866.08	347.583	0.69
14553.00	90.830	335.840	5671.04	7801.71	7766.44	-1728.10	1741042.58	14613603.42	40°14'16.7823"N	80°38'21.9574"W	7956.37	347.456	1.47
14643.00	90.740	336.190	5669.80	7891.70	7848.66	-1764.68	1741006.01	14613685.61	40°14'17.5963"N	80°38'22.4248"W	8044.59	347.328	0.40
14734.00	90.460	335.910	5668.85	7982.70	7931.82	-1801.62	1740969.09	14613768.73	40°14'18.4195"N	80°38'22.8967"W	8133.85	347.203	0.44
14826.00	90.980	335.010	5667.69	8074.68	8015.50	-1839.82	1740930.89	14613852.38	40°14'19.2480"N	80°38'23.3850"W	8223.94	347.073	1.13
14918.00	90.860	335.700	5666.22	8166.66	8099.11	-1878.18	1740892.55	14613935.96	40°14'20.0757"N	80°38'23.8753"W	8314.03	346.944	0.76
15005.00	90.620	335.270	5665.09	8253.65	8178.26	-1914.28	1740856.47	14614015.08	40°14'20.8593"N	80°38'24.3366"W	8399.31	346.826	0.57
15095.00	90.680	335.410	5664.07	8343.63	8260.04	-1951.83	1740818.94	14614096.83	40°14'21.6690"N	80°38'24.8165"W	8487.52	346.705	0.17
15186.00	90.550	335.720	5663.10	8434.62	8342.89	-1989.47	1740781.31	14614179.64	40°14'22.4892"N	80°38'25.2975"W	8576.82	346.588	0.37
15277.00	90.650	335.370	5662.14	8525.61	8425.72	-2027.14	1740743.65	14614262.44	40°14'23.3092"N	80°38'25.7789"W	8666.14	346.472	0.40
15367.00	90.650	335.240	5661.12	8615.60	8507.48	-2064.74	1740706.07	14614344.18	40°14'24.1187"N	80°38'26.2595"W	8754.45	346.358	0.14
15458.00	90.740	335.070	5660.02	8706.58	8590.06	-2102.97	1740667.85	14614426.72	40°14'24.9362"N	80°38'26.7481"W	8843.73	346.244	0.21
15549.00	90.800	335.290	5658.79	8797.56	8672.64	-2141.16	1740629.67	14614509.27	40°14'25.7538"N	80°38'27.2364"W	8933.05	346.132	0.25
15639.00	90.400	335.880	5657.85	8887.55	8754.59	-2178.36	1740592.49	14614591.18	40°14'26.5651"N	80°38'27.7117"W	9021.53	346.027	0.79
15730.00	90.150	335.760	5657.42	8978.54	8837.60	-2215.64	1740555.23	14614674.17	40°14'27.3869"N	80°38'28.1881"W	9111.11	345.926	0.30
15820.00	90.370	335.250	5657.01	9068.54	8919.50	-2252.95	1740517.93	14614756.03	40°14'28.1977"N	80°38'28.6650"W	9199.64	345.824	0.62



**REFERENCE WELLPATH IDENTIFICATION**

Operator	SWN PRODUCTION COMPANY, LLC	Well	Brian Teslovich BRK 5H
Field	Brooke	API	047-009-00317
Facility	Brian Teslovich BRK Pad	Wellbore	Brian Teslovich BRK 5H AWB
Slot	Slot 5H		

**WELLPATH DATA (221 stations)**

MD [ft]	Inclination [°]	Azimuth [°]	TVD [ft]	Vert Sect [ft]	North [ft]	East [ft]	Grid East [US ft]	Grid North [US ft]	Latitude	Longitude	Closure Dist [ft]	Closure Dir [°]	DLS [°/100ft]
15911.00	90.550	334.840	5656.28	9159.52	9002.00	-2291.34	1740479.55	14614838.50	40°14'29.0145"N	80°38'29.1557"W	9289.04	345.719	0.49
16002.00	90.490	335.530	5655.45	9250.50	9084.60	-2329.53	1740441.38	14614921.06	40°14'29.8322"N	80°38'29.6439"W	9378.52	345.618	0.76
16094.00	90.620	335.770	5654.56	9342.49	9168.41	-2367.46	1740403.46	14615004.84	40°14'30.6620"N	80°38'30.1286"W	9469.14	345.521	0.30
16185.00	90.250	335.800	5653.87	9433.49	9251.40	-2404.79	1740366.15	14615087.80	40°14'31.4836"N	80°38'30.6056"W	9558.84	345.429	0.41
16275.00	90.310	335.050	5653.43	9523.48	9333.25	-2442.22	1740328.74	14615169.62	40°14'32.2939"N	80°38'31.0840"W	9647.48	345.336	0.84
16366.00	90.860	335.330	5652.50	9614.46	9415.84	-2480.40	1740290.57	14615252.18	40°14'33.1116"N	80°38'31.5721"W	9737.07	345.242	0.68
16457.00	90.710	335.460	5651.25	9705.45	9498.57	-2518.28	1740252.70	14615334.88	40°14'33.9306"N	80°38'32.0563"W	9826.73	345.151	0.22
16548.00	90.920	336.050	5649.96	9796.43	9581.54	-2555.65	1740215.35	14615417.81	40°14'34.7519"N	80°38'32.5338"W	9916.51	345.065	0.69
16639.00	90.400	335.940	5648.91	9887.43	9664.66	-2592.66	1740178.35	14615500.90	40°14'35.5748"N	80°38'33.0069"W	10006.38	344.983	0.58
16730.00	90.620	335.750	5648.10	9978.42	9747.69	-2629.90	1740141.12	14615583.90	40°14'36.3968"N	80°38'33.4827"W	10096.23	344.901	0.32
16821.00	90.430	335.690	5647.27	10069.42	9830.64	-2667.32	1740103.72	14615666.81	40°14'37.2179"N	80°38'33.9609"W	10186.07	344.820	0.22
16912.00	90.490	335.770	5646.54	10160.41	9913.59	-2704.72	1740066.33	14615749.73	40°14'38.0392"N	80°38'34.4389"W	10275.93	344.739	0.11
17004.00	90.580	335.380	5645.68	10252.40	9997.35	-2742.76	1740028.31	14615833.46	40°14'38.8684"N	80°38'34.9251"W	10366.77	344.658	0.44
17097.00	90.400	335.870	5644.88	10345.39	10082.06	-2781.14	1739989.94	14615918.14	40°14'39.7070"N	80°38'35.4157"W	10458.62	344.578	0.56
17188.00	90.620	335.090	5644.07	10436.38	10164.85	-2818.91	1739952.19	14616000.90	40°14'40.5266"N	80°38'35.8984"W	10548.48	344.500	0.89
17279.00	90.580	335.260	5643.12	10527.37	10247.44	-2857.11	1739914.00	14616083.45	40°14'41.3442"N	80°38'36.3868"W	10638.28	344.421	0.19
17367.00	90.580	336.290	5642.23	10615.36	10327.68	-2893.22	1739877.91	14616163.66	40°14'42.1386"N	80°38'36.8482"W	10725.28	344.350	1.17
17458.00	90.650	336.780	5641.25	10706.35	10411.15	-2929.45	1739841.69	14616247.10	40°14'42.9649"N	80°38'37.3112"W	10815.44	344.285	0.54
17549.00	90.220	336.490	5640.56	10797.34	10494.69	-2965.54	1739805.62	14616330.60	40°14'43.7918"N	80°38'37.7722"W	10905.63	344.221	0.57
17640.00	90.460	336.250	5640.02	10888.34	10578.06	-3002.01	1739769.16	14616413.94	40°14'44.6171"N	80°38'38.2383"W	10995.79	344.156	0.37
17730.00	91.020	337.200	5638.86	10978.33	10660.72	-3037.57	1739733.61	14616496.57	40°14'45.4354"N	80°38'38.6926"W	11085.03	344.096	1.23
17822.00	90.830	336.460	5637.37	11070.31	10745.29	-3073.77	1739697.43	14616581.11	40°14'46.2725"N	80°38'39.1549"W	11176.28	344.036	0.83
17913.00	90.280	336.790	5636.49	11161.30	10828.82	-3109.87	1739661.35	14616664.60	40°14'47.0994"N	80°38'39.6162"W	11266.52	343.977	0.70
18003.00	90.220	336.380	5636.10	11251.30	10911.40	-3145.63	1739625.60	14616747.16	40°14'47.9169"N	80°38'40.0731"W	11355.78	343.918	0.46
18094.00	90.490	336.370	5635.53	11342.29	10994.78	-3182.10	1739589.14	14616830.50	40°14'48.7422"N	80°38'40.5391"W	11446.00	343.859	0.30
18185.00	90.180	336.360	5635.00	11433.29	11078.14	-3218.58	1739552.67	14616913.83	40°14'49.5675"N	80°38'41.0053"W	11536.22	343.800	0.34
18276.00	90.430	336.460	5634.52	11524.29	11161.54	-3255.00	1739516.27	14616997.19	40°14'50.3930"N	80°38'41.4706"W	11626.47	343.742	0.30
18368.00	90.430	337.360	5633.83	11616.28	11246.16	-3291.08	1739480.21	14617081.79	40°14'51.2307"N	80°38'41.9315"W	11717.82	343.688	0.98
18461.00	89.910	336.470	5633.55	11709.27	11331.71	-3327.54	1739443.76	14617167.30	40°14'52.0775"N	80°38'42.3974"W	11810.18	343.635	1.11
18553.00	90.250	336.370	5633.42	11801.27	11416.03	-3364.34	1739406.97	14617251.59	40°14'52.9122"N	80°38'42.8676"W	11901.45	343.580	0.39

**REFERENCE WELLPATH IDENTIFICATION**

Operator	SWN PRODUCTION COMPANY, LLC	Well	Brian Teslovich BRK 5H
Field	Brooke	API	047-009-00317
Facility	Brian Teslovich BRK Pad	Wellbore	Brian Teslovich BRK 5H AWB
Slot	Slot 5H		

**WELLPATH DATA (221 stations) † = interpolated, ‡ = extrapolated station**

MD [ft]	Inclination [°]	Azimuth [°]	TVD [ft]	Vert Sect [ft]	North [ft]	East [ft]	Grid East [US ft]	Grid North [US ft]	Latitude	Longitude	Closure Dist [ft]	Closure Dir [°]	DLS [°/100ft]
18646.00	90.370	337.000	5632.92	11894.26	11501.44	-3401.15	1739370.18	14617336.96	40°14'53.7576"N	80°38'43.3379"W	11993.78	343.526	0.69
18737.00	90.430	337.070	5632.28	11985.25	11585.22	-3436.66	1739334.68	14617420.71	40°14'54.5870"N	80°38'43.7915"W	12084.20	343.477	0.10
18827.00	90.060	336.830	5631.90	12075.24	11668.04	-3471.89	1739299.46	14617503.49	40°14'55.4067"N	80°38'44.2416"W	12173.62	343.429	0.49
18918.00	91.200	337.310	5630.90	12166.22	11751.84	-3507.34	1739264.02	14617587.26	40°14'56.2362"N	80°38'44.6945"W	12264.06	343.382	1.36
19009.00	90.710	336.690	5629.38	12257.19	11835.59	-3542.90	1739228.49	14617670.99	40°14'57.0653"N	80°38'45.1487"W	12354.49	343.335	0.87
19100.00	90.650	336.390	5628.30	12348.19	11919.06	-3579.12	1739192.27	14617754.42	40°14'57.8916"N	80°38'45.6116"W	12444.85	343.286	0.34
19193.00	90.770	336.330	5627.15	12441.18	12004.25	-3616.41	1739155.00	14617839.58	40°14'58.7348"N	80°38'46.0881"W	12537.16	343.235	0.14
19283.00	90.740	336.450	5625.96	12531.17	12086.71	-3652.45	1739118.97	14617922.01	40°14'59.5511"N	80°38'46.5487"W	12626.52	343.186	0.14
19374.00	90.620	336.580	5624.88	12622.16	12170.17	-3688.71	1739082.72	14618005.43	40°15'0.3772"N	80°38'47.0120"W	12716.90	343.138	0.19
19462.00	91.020	336.610	5623.62	12710.15	12250.92	-3723.67	1739047.79	14618086.15	40°15'1.1766"N	80°38'47.4587"W	12804.32	343.093	0.46
19487.00‡	91.020	336.610	5623.18	12735.14	12273.86	-3733.59	1739037.87	14618109.08	40°15'1.4037"N	80°38'47.5855"W	12829.16	343.081	0.00

**TARGETS**

Name	TVD [ft]	North [ft]	East [ft]	Grid East [US ft]	Grid North [US ft]	Latitude	Longitude	Shape
Brian Teslovich BRK 5H BHL Rev-1	5636.17	12271.08	-3752.05	1739019.41	14618106.30	40°15'1.3769"N	80°38'47.8237"W	point
Brian Teslovich BRK 5H LP Rev 2	5783.00	487.29	1460.24	1744229.67	14606327.11	40°13'4.7208"N	80°37'41.2392"W	point



<b>REFERENCE WELLPATH IDENTIFICATION</b>			
Operator	SWN PRODUCTION COMPANY, LLC	Well	Brian Teslovich BRK 5H
Field	Brooke	API	047-009-00317
Facility	Brian Teslovich BRK Pad	Wellbore	Brian Teslovich BRK 5H AWB
Slot	Slot 5H		

<b>WELLPATH COMPOSITION - Ref Wellbore: Brian Teslovich BRK 5H AWB    Ref Wellpath: Brian Teslovich BRK 5H AWB_awp 100' - 19462' Proj: 19487'</b>					
Start MD [ft]	End MD [ft]	Positional Uncertainty Model	Log Name/Comment	Wellbore	Survey Date
26.00	307.00	BH Generic gyro - continuous (Standard)	1 Gyro 100' - 307'	Brian Teslovich BRK 5H AWB	10/28/2021
307.00	1582.00	OWSG MWD rev2 + HRGM	2 Tally MWD 356' - 1582'	Brian Teslovich BRK 5H AWB	10/28/2021
1582.00	4897.00	OWSG MWD rev2 + HRGM	3 Tally MWD 1709' - 4897'	Brian Teslovich BRK 5H AWB	10/29/2021
4897.00	19487.00	BH AutoTrak Curve/eXpress (2019) (HRGM, Short spacing)	4 BH MWD 4992' - 19462'	Brian Teslovich BRK 5H AWB	11/1/2021