

SWN PRODUCTION COMPANY, LLC

Location: Brooke County, WV
 Field: Brooke
 Facility: John Good Jr BRK Pad

Slot: Slot #3H
 Well: John Good Jr BRK 3H
 Wellbore: John Good Jr BRK 3H PWB

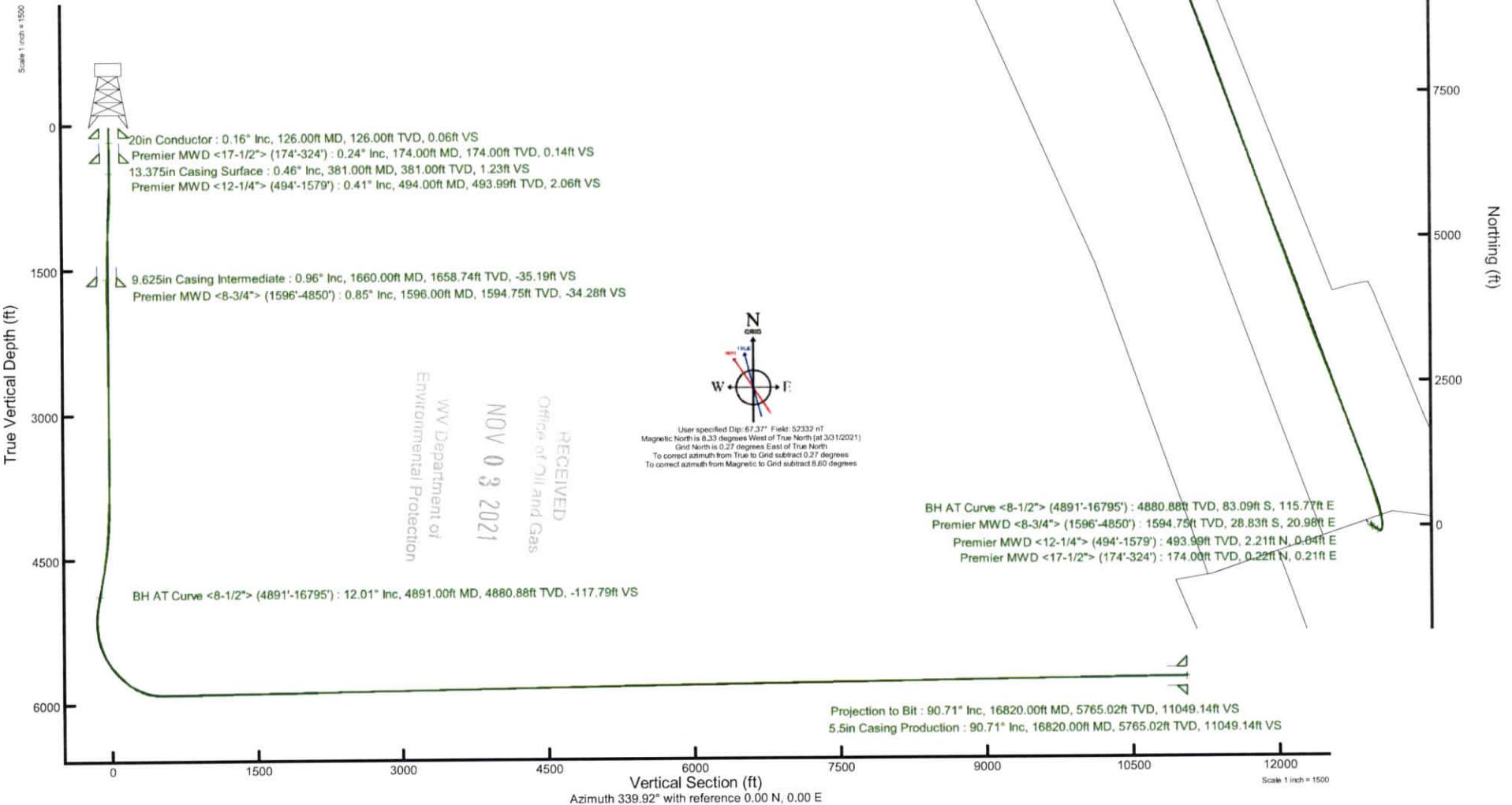


Location Information

Facility Name		Grid East (US ft)	Grid North (US ft)	Latitude	Longitude	
John Good Jr BRK Pad		1757463.232	14608504.851	40°13'25.6660"N	80°34'50.4520"W	
Slot	Local N (ft)	Local E (ft)	Grid East (US ft)	Grid North (US ft)	Latitude	Longitude
Slot #3H	-36.00	72.91	1757536.110	14608468.860	40°13'25.3068"N	80°34'49.5143"W
SDC 40 (KB) to Ground level (At Slot: Slot #3H)				26ft		
Mean Sea Level to Ground level (At Slot: Slot #3H)				-1153.4ft		
SDC 40 (KB) to Mean Sea Level				1179.4ft		

Plot reference wellpath is John Good Jr BRK 3H PWB Rev-A.0	Grid System: NAD83 / UTM Zone 17 North, US feet
True vertical depths are referenced to SDC 40 (KB)	North Reference: Grid north
Reference wellpath measured depths are referenced to SDC 40 (KB)	Scale: True distance
SDC 40 (KB) to Mean Sea Level: 1179.4 feet	Coordinates are in feet referenced to Slot
Mean Sea Level to Ground level (At Slot: Slot #3H): -1153.4 feet	Depths are in feet
Offset wellpath MDs are referenced to each path's default MD datum	Created by: atergen on 2021-04-22; Database: WA_MPL_EASTERNUS_Delhi

API: 47-009-00321-0000
 BH Job #: 110819221
 Rig: SDC 40
 Duration: 04/17/2021 - 04/19/2021



Azimuth 339.92° with reference 0.00 N, 0.00 E

REFERENCE WELLPATH IDENTIFICATION			
Operator	SWN PRODUCTION COMPANY, LLC	Well	John Good Jr BRK 3H
Field	Brooke	API/Legal	
Facility	John Good Jr BRK Pad	Wellbore	John Good Jr BRK 3H AWB
Slot	Slot #3H		

REPORT SETUP INFORMATION			
Projection System	NAD83 / UTM Zone 17 North, US feet	Software System	WellArchitect® 6.0
North Reference	Grid	User	Atenjen
Scale	0.999616	Report Generated	4/22/2021 at 9:22:41 AM
Convergence at slot	0.27° East	Database	WA_MPL_EASTERNUS_Defn

WELLPATH LOCATION						
	Local coordinates		Grid coordinates		Geographic coordinates	
	North[ft]	East[ft]	Easting[US ft]	Northing[US ft]	Latitude	Longitude
Slot Location	-36.00	72.91	1757536.11	14608468.86	40°13'25.3068"N	80°34'49.5143"W
Facility Reference Pt			1757463.23	14608504.85	40°13'25.6660"N	80°34'50.4520"W
Field Reference Pt			0.00	0.00	0°00'0.0000"	85°29'19.4780"W

WELLPATH DATUM			
Calculation method	Minimum curvature	SDC 40 (KB) to Facility Vertical Datum	1179.40ft
Horizontal Reference Pt	Slot	SDC 40 (KB) to Mean Sea Level	1179.40ft
Vertical Reference Pt	SDC 40 (KB)	SDC 40 (KB) to Ground Level at Slot (Slot #3H)	26.00ft
MD Reference Pt	SDC 40 (KB)	Section Origin	N 0.00, E 0.00 ft
Field Vertical Reference	Mean Sea Level	Section Azimuth	339.92°

REFERENCE WELLPATH IDENTIFICATION

Operator	SWN PRODUCTION COMPANY, LLC	Well	John Good Jr BRK 3H
Field	Brooke	API/Legal	
Facility	John Good Jr BRK Pad	Wellbore	John Good Jr BRK 3H AWB
Slot	Slot #3H		

WELLPATH DATA (189 stations) † = interpolated, ‡ = extrapolated station

MD [ft]	Inclination [°]	Azimuth [°]	TVD [ft]	Vert Sect [ft]	North [ft]	East [ft]	Grid East [US ft]	Grid North [US ft]	Latitude	Longitude	Closure Dist [ft]	Closure Dir [°]	DLS [°/100ft]	Build Rate [°/100ft]	Turn Rate [°/100ft]
0.00†	0.000	43.800	0.00	0.00	0.00	0.00	1757536.11	14608468.86	40°13'25.3068"N	80°34'49.5143"W	0.00	0.000	0.00	0.00	0.00
26.00	0.000	43.800	26.00	0.00	0.00	0.00	1757536.11	14608468.86	40°13'25.3068"N	80°34'49.5143"W	0.00	0.000	0.00	0.00	0.00
174.00	0.240	43.800	174.00	0.14	0.22	0.21	1757536.32	14608469.08	40°13'25.3090"N	80°34'49.5115"W	0.31	43.800	0.16	0.16	0.00
222.00	0.380	12.370	222.00	0.32	0.45	0.32	1757536.43	14608469.31	40°13'25.3113"N	80°34'49.5102"W	0.55	35.161	0.45	0.29	-65.48
312.00	0.310	290.310	312.00	0.72	0.83	0.15	1757536.26	14608469.69	40°13'25.3150"N	80°34'49.5123"W	0.84	10.527	0.51	-0.08	-91.18
324.00	0.490	4.250	324.00	0.79	0.89	0.13	1757536.24	14608469.75	40°13'25.3156"N	80°34'49.5126"W	0.90	8.130	4.18	1.50	616.17
494.00	0.410	346.300	493.99	2.06	2.21	0.04	1757536.15	14608471.07	40°13'25.3286"N	80°34'49.5137"W	2.21	0.961	0.09	-0.05	-10.56
584.00	0.770	347.890	583.99	2.98	3.11	-0.17	1757535.94	14608471.97	40°13'25.3375"N	80°34'49.5163"W	3.11	356.942	0.40	0.40	1.77
672.00	0.350	45.430	671.98	3.68	3.88	-0.10	1757536.01	14608472.74	40°13'25.3451"N	80°34'49.5154"W	3.88	358.542	0.74	-0.48	65.39
761.00	1.830	127.170	760.97	2.59	3.21	1.23	1757537.34	14608472.07	40°13'25.3385"N	80°34'49.4983"W	3.44	20.931	2.04	1.66	91.84
852.00	3.340	136.560	851.87	-1.06	0.41	4.21	1757540.32	14608469.27	40°13'25.3106"N	80°34'49.4600"W	4.23	84.485	1.72	1.66	10.32
943.00	4.320	134.700	942.67	-6.60	-3.93	8.47	1757544.57	14608464.93	40°13'25.2676"N	80°34'49.4054"W	9.33	114.895	1.09	1.08	-2.04
1035.00	5.350	136.210	1034.34	-13.66	-9.46	13.90	1757550.00	14608459.40	40°13'25.2126"N	80°34'49.3357"W	16.81	124.250	1.13	1.12	1.64
1126.00	4.130	142.750	1125.03	-20.67	-15.13	18.82	1757554.92	14608453.73	40°13'25.1564"N	80°34'49.2726"W	24.15	128.808	1.46	-1.34	7.19
1216.00	2.420	157.860	1214.88	-25.67	-19.47	21.50	1757557.60	14608449.39	40°13'25.1134"N	80°34'49.2384"W	29.01	132.175	2.11	-1.90	16.79
1307.00	1.440	184.840	1305.83	-28.63	-22.39	22.12	1757558.22	14608446.48	40°13'25.0845"N	80°34'49.2305"W	31.48	135.347	1.44	-1.08	29.65
1398.00	1.440	188.050	1396.80	-30.67	-24.66	21.87	1757557.97	14608444.20	40°13'25.0620"N	80°34'49.2339"W	32.96	138.441	0.09	0.00	3.53
1488.00	1.380	194.280	1486.77	-32.57	-26.83	21.44	1757557.54	14608442.04	40°13'25.0406"N	80°34'49.2395"W	34.35	141.375	0.18	-0.07	6.92
1579.00	0.880	191.720	1577.75	-34.06	-28.58	21.03	1757557.13	14608440.29	40°13'25.0234"N	80°34'49.2450"W	35.48	143.656	0.55	-0.55	-2.81
1596.00	0.850	190.300	1594.75	-34.28	-28.83	20.98	1757557.08	14608440.04	40°13'25.0209"N	80°34'49.2456"W	35.66	143.959	0.22	-0.18	-8.35
1699.00	1.040	177.460	1697.74	-35.83	-30.52	20.88	1757556.99	14608438.35	40°13'25.0042"N	80°34'49.2469"W	36.98	145.615	0.28	0.18	-12.47
1787.00	1.260	327.130	1785.73	-35.65	-30.50	20.39	1757556.50	14608438.37	40°13'25.0044"N	80°34'49.2533"W	36.69	146.233	2.52	0.25	170.08
1880.00	2.000	334.090	1878.69	-33.04	-28.19	19.13	1757555.23	14608440.69	40°13'25.0274"N	80°34'49.2694"W	34.06	145.833	0.82	0.80	7.48
1972.00	1.010	327.400	1970.66	-30.65	-26.06	17.99	1757554.10	14608442.81	40°13'25.0485"N	80°34'49.2840"W	31.67	145.376	1.09	-1.08	-7.27
2060.00	0.300	297.150	2058.65	-29.73	-25.30	17.37	1757553.47	14608443.57	40°13'25.0560"N	80°34'49.2919"W	30.69	145.528	0.87	-0.81	-34.38
2152.00	0.360	324.040	2150.65	-29.27	-24.96	16.99	1757553.09	14608443.91	40°13'25.0594"N	80°34'49.2969"W	30.19	145.759	0.18	0.07	29.23
2243.00	0.460	320.800	2241.65	-28.65	-24.44	16.59	1757552.69	14608444.43	40°13'25.0645"N	80°34'49.3020"W	29.54	145.837	0.11	0.11	-3.56
2333.00	0.610	294.590	2331.65	-27.97	-23.96	15.92	1757552.03	14608444.91	40°13'25.0693"N	80°34'49.3105"W	28.77	146.395	0.31	0.17	-29.12
2424.00	0.560	326.120	2422.64	-27.20	-23.39	15.23	1757551.34	14608445.48	40°13'25.0749"N	80°34'49.3193"W	27.91	146.924	0.35	-0.05	34.65
2513.00	0.620	321.430	2511.64	-26.32	-22.65	14.69	1757550.80	14608446.22	40°13'25.0823"N	80°34'49.3263"W	27.00	147.035	0.09	0.07	-5.27



Actual Wellpath Report

John Good Jr BRK 3H AWP Proj: 16820'
Page 3 of 10



REFERENCE WELLPATH IDENTIFICATION			
Operator	SWN PRODUCTION COMPANY, LLC	Well	John Good Jr BRK 3H
Field	Brooke	API/Legal	
Facility	John Good Jr BRK Pad	Wellbore	John Good Jr BRK 3H AWB
Slot	Slot #3H		

WELLPATH DATA (189 stations)															
MD [ft]	Inclination [°]	Azimuth [°]	TVD [ft]	Vert Sect [ft]	North [ft]	East [ft]	Grid East [US ft]	Grid North [US ft]	Latitude	Longitude	Closure Dist [ft]	Closure Dir [°]	DLS [°/100ft]	Build Rate [°/100ft]	Turn Rate [°/100ft]
2601.00	0.540	312.020	2599.63	-25.50	-22.00	14.09	1757550.19	14608446.86	40°13'25.0887"N	80°34'49.3341"W	26.13	147.372	0.14	-0.09	-10.69
2692.00	0.580	312.010	2690.63	-24.72	-21.41	13.43	1757549.53	14608447.46	40°13'25.0946"N	80°34'49.3425"W	25.27	147.906	0.04	0.04	-0.01
2782.00	0.400	311.410	2780.62	-24.04	-20.90	12.85	1757548.96	14608447.97	40°13'25.0997"N	80°34'49.3499"W	24.53	148.406	0.20	-0.20	-0.67
2874.00	0.500	331.460	2872.62	-23.36	-20.33	12.42	1757548.52	14608448.54	40°13'25.1053"N	80°34'49.3554"W	23.82	148.580	0.20	0.11	21.79
2965.00	0.480	334.670	2963.62	-22.59	-19.64	12.07	1757548.17	14608449.23	40°13'25.1122"N	80°34'49.3600"W	23.05	148.430	0.04	-0.02	3.53
3055.00	0.620	327.520	3053.61	-21.74	-18.89	11.64	1757547.75	14608449.98	40°13'25.1196"N	80°34'49.3654"W	22.19	148.344	0.17	0.16	-7.94
3146.00	0.670	327.320	3144.61	-20.74	-18.02	11.09	1757547.20	14608450.84	40°13'25.1282"N	80°34'49.3724"W	21.16	148.389	0.06	0.05	-0.22
3238.00	0.910	316.200	3236.60	-19.54	-17.04	10.30	1757546.40	14608451.82	40°13'25.1379"N	80°34'49.3826"W	19.91	148.862	0.31	0.26	-12.09
3328.00	0.890	314.030	3326.59	-18.26	-16.04	9.30	1757545.41	14608452.83	40°13'25.1479"N	80°34'49.3954"W	18.54	149.899	0.04	-0.02	-2.41
3419.00	1.070	318.670	3417.58	-16.83	-14.91	8.23	1757544.34	14608453.95	40°13'25.1591"N	80°34'49.4091"W	17.03	151.106	0.22	0.20	5.10
3511.00	0.990	305.570	3509.56	-15.37	-13.80	7.02	1757543.12	14608455.06	40°13'25.1701"N	80°34'49.4247"W	15.48	153.059	0.27	-0.09	-14.24
3602.00	1.250	138.190	3600.55	-15.65	-14.09	7.04	1757543.15	14608454.78	40°13'25.1673"N	80°34'49.4244"W	15.75	153.452	2.45	0.29	-183.93
3692.00	2.220	136.880	3690.51	-18.16	-16.09	8.88	1757544.99	14608452.78	40°13'25.1474"N	80°34'49.4008"W	18.38	151.096	1.08	1.08	-1.46
3784.00	1.970	130.480	3782.45	-21.18	-18.42	11.30	1757547.41	14608450.45	40°13'25.1243"N	80°34'49.3697"W	21.61	148.459	0.37	-0.27	-6.96
3875.00	1.650	124.080	3873.41	-23.60	-20.17	13.58	1757549.68	14608448.70	40°13'25.1069"N	80°34'49.3405"W	24.31	146.046	0.42	-0.35	-7.03
3965.00	3.480	120.480	3963.31	-26.76	-22.28	17.01	1757553.11	14608446.59	40°13'25.0858"N	80°34'49.2964"W	28.03	142.643	2.04	2.03	-4.00
4056.00	3.740	114.500	4054.13	-30.98	-24.91	22.09	1757558.19	14608443.96	40°13'25.0596"N	80°34'49.2311"W	33.29	138.437	0.50	0.29	-6.57
4146.00	3.390	108.930	4143.96	-34.72	-26.99	27.28	1757563.38	14608441.88	40°13'25.0388"N	80°34'49.1643"W	38.37	134.700	0.55	-0.39	-6.19
4237.00	4.470	116.330	4234.74	-38.98	-29.44	33.00	1757569.10	14608439.43	40°13'25.0144"N	80°34'49.0907"W	44.22	131.735	1.31	1.19	8.13
4329.00	6.010	122.880	4326.36	-45.42	-33.64	40.26	1757576.35	14608435.23	40°13'24.9725"N	80°34'48.9974"W	52.46	129.885	1.79	1.67	7.12
4420.00	7.500	123.050	4416.72	-53.97	-39.47	49.24	1757585.33	14608429.41	40°13'24.9145"N	80°34'48.8820"W	63.10	128.715	1.64	1.64	0.19
4511.00	9.070	125.810	4506.77	-64.66	-46.90	60.03	1757596.12	14608421.97	40°13'24.8405"N	80°34'48.7433"W	76.18	128.001	1.78	1.73	3.03
4602.00	9.160	122.020	4596.62	-76.32	-54.94	71.99	1757608.07	14608413.94	40°13'24.7605"N	80°34'48.5896"W	90.56	127.350	0.67	0.10	-4.16
4694.00	10.450	124.860	4687.28	-88.93	-63.59	85.05	1757621.12	14608405.29	40°13'24.6744"N	80°34'48.4218"W	106.19	126.787	1.50	1.40	3.09
4784.00	10.410	122.820	4775.79	-102.09	-72.67	98.58	1757634.65	14608396.22	40°13'24.5841"N	80°34'48.2479"W	122.47	126.396	0.41	-0.04	-2.27
4850.00	10.640	120.280	4840.68	-111.54	-78.97	108.85	1757644.92	14608389.92	40°13'24.5213"N	80°34'48.1159"W	134.48	125.961	0.78	0.35	-3.85
4891.00	12.010	121.230	4880.88	-117.79	-83.09	115.77	1757651.83	14608385.80	40°13'24.4803"N	80°34'48.0270"W	142.50	125.668	3.37	3.34	2.32
4983.00	11.640	126.940	4970.93	-133.04	-93.63	131.37	1757667.43	14608375.27	40°13'24.3754"N	80°34'47.8265"W	161.32	125.479	1.33	-0.40	6.21
5073.00	12.320	102.140	5059.03	-145.79	-101.11	148.02	1757684.08	14608367.79	40°13'24.3007"N	80°34'47.6122"W	179.26	124.336	5.72	0.76	-27.56
5165.00	9.970	61.860	5149.42	-149.91	-99.42	164.67	1757700.72	14608369.48	40°13'24.3167"N	80°34'47.3975"W	192.35	121.121	8.64	-2.55	-43.78

REFERENCE WELLPATH IDENTIFICATION

Operator	SWN PRODUCTION COMPANY, LLC	Well	John Good Jr BRK 3H
Field	Brooke	API/Legal	
Facility	John Good Jr BRK Pad	Wellbore	John Good Jr BRK 3H AWB
Slot	Slot #3H		

WELLPATH DATA (189 stations)

MD [ft]	Inclination [°]	Azimuth [°]	TVD [ft]	Vert Sect [ft]	North [ft]	East [ft]	Grid East [US ft]	Grid North [US ft]	Latitude	Longitude	Closure Dist [ft]	Closure Dir [°]	DLS [°/100ft]	Build Rate [°/100ft]	Turn Rate [°/100ft]
5256.00	10.180	27.090	5239.10	-143.33	-88.53	175.29	1757711.33	14608380.36	40°13'24.4237"N	80°34'47.2600"W	196.38	116.797	6.59	0.23	-38.21
5347.00	16.340	17.880	5327.64	-127.76	-69.17	182.89	1757718.93	14608399.72	40°13'24.6147"N	80°34'47.1608"W	195.53	110.717	7.14	6.77	-10.12
5438.00	21.860	11.040	5413.61	-103.14	-40.33	190.07	1757726.11	14608428.54	40°13'24.8993"N	80°34'47.0665"W	194.30	101.981	6.54	6.07	-7.52
5529.00	28.150	5.230	5496.05	-69.19	-2.28	195.28	1757731.31	14608466.58	40°13'25.2751"N	80°34'46.9970"W	195.29	90.670	7.41	6.91	-6.38
5620.00	34.210	353.760	5573.94	-24.87	44.61	194.45	1757730.49	14608513.45	40°13'25.7385"N	80°34'47.0048"W	199.50	77.080	9.30	6.66	-12.60
5712.00	40.440	342.880	5647.14	30.16	98.95	182.83	1757718.87	14608567.77	40°13'26.2760"N	80°34'47.1513"W	207.89	61.579	9.84	6.77	-11.83
5803.00	45.420	344.030	5713.75	92.00	158.35	165.22	1757701.26	14608627.15	40°13'26.8638"N	80°34'47.3747"W	228.85	46.216	5.54	5.47	1.26
5896.00	48.530	343.930	5777.20	159.81	223.69	146.45	1757682.51	14608692.46	40°13'27.5104"N	80°34'47.6126"W	267.37	33.214	3.35	3.34	-0.11
5986.00	59.050	343.880	5830.29	232.15	293.36	126.35	1757662.41	14608762.11	40°13'28.1998"N	80°34'47.8676"W	319.41	23.301	11.69	11.69	-0.06
6078.00	68.770	343.970	5870.70	314.47	372.66	103.50	1757639.57	14608841.38	40°13'28.9845"N	80°34'48.1573"W	386.77	15.522	10.57	10.57	0.10
6170.00	78.320	344.540	5896.73	402.35	457.49	79.60	1757615.68	14608926.17	40°13'29.8239"N	80°34'48.4603"W	464.36	9.870	10.40	10.38	0.62
6261.00	87.880	344.600	5907.65	492.29	544.47	55.59	1757591.68	14609013.12	40°13'30.6845"N	80°34'48.7645"W	547.30	5.829	10.51	10.51	0.07
6353.00	90.710	341.970	5908.78	584.10	632.56	29.13	1757565.23	14609101.17	40°13'31.5563"N	80°34'49.1002"W	633.23	2.637	4.20	3.08	-2.86
6443.00	90.280	341.910	5908.00	674.05	718.12	1.23	1757537.34	14609186.70	40°13'32.4031"N	80°34'49.4546"W	718.12	0.098	0.48	-0.48	-0.07
6534.00	90.520	342.230	5907.37	764.98	804.70	-26.78	1757509.34	14609273.25	40°13'33.2599"N	80°34'49.8105"W	805.14	358.094	0.44	0.26	0.35
6625.00	90.860	341.330	5906.27	855.92	891.13	-55.23	1757480.90	14609359.64	40°13'34.1154"N	80°34'50.1720"W	892.84	356.453	1.06	0.37	-0.99
6716.00	90.800	342.000	5904.95	946.87	977.50	-83.85	1757452.29	14609445.98	40°13'34.9702"N	80°34'50.5358"W	981.09	355.097	0.74	-0.07	0.74
6807.00	90.950	341.160	5903.56	1037.82	1063.83	-112.60	1757423.55	14609532.28	40°13'35.8246"N	80°34'50.9012"W	1069.77	353.958	0.94	0.16	-0.92
6899.00	90.580	339.440	5902.34	1129.81	1150.43	-143.61	1757392.55	14609618.85	40°13'36.6819"N	80°34'51.2957"W	1159.36	352.884	1.91	-0.40	-1.87
6990.00	91.260	339.940	5900.88	1220.79	1235.76	-175.19	1757360.98	14609704.14	40°13'37.5266"N	80°34'51.6976"W	1248.12	351.931	0.93	0.75	0.55
7081.00	90.800	339.210	5899.24	1311.78	1321.03	-206.95	1757329.24	14609789.38	40°13'38.3706"N	80°34'52.1018"W	1337.14	351.097	0.95	-0.51	-0.80
7171.00	91.020	339.340	5897.81	1401.76	1405.19	-238.79	1757297.41	14609873.51	40°13'39.2038"N	80°34'52.5072"W	1425.34	350.356	0.28	0.24	0.14
7262.00	91.020	341.130	5896.19	1492.74	1490.81	-269.56	1757266.66	14609959.10	40°13'40.0513"N	80°34'52.8987"W	1514.99	349.751	1.97	0.00	1.97
7353.00	90.950	339.170	5894.63	1583.72	1576.39	-300.45	1757235.77	14610044.64	40°13'40.8984"N	80°34'53.2918"W	1604.77	349.209	2.15	-0.08	-2.15
7444.00	90.460	339.130	5893.51	1674.71	1661.42	-332.84	1757203.40	14610129.64	40°13'41.7402"N	80°34'53.7041"W	1694.43	348.672	0.54	-0.54	-0.04
7535.00	91.170	339.680	5892.21	1765.69	1746.60	-364.85	1757171.41	14610214.78	40°13'42.5834"N	80°34'54.1116"W	1784.30	348.201	0.99	0.78	0.60
7627.00	90.550	339.250	5890.83	1857.68	1832.74	-397.11	1757139.15	14610300.89	40°13'43.4362"N	80°34'54.5224"W	1875.27	347.774	0.82	-0.67	-0.47
7718.00	91.600	339.500	5889.12	1948.66	1917.89	-429.16	1757107.11	14610386.01	40°13'44.2791"N	80°34'54.9304"W	1965.32	347.387	1.19	1.15	0.27
7810.00	91.140	337.850	5886.92	2040.61	2003.57	-462.61	1757073.68	14610471.65	40°13'45.1273"N	80°34'55.3564"W	2056.28	346.999	1.86	-0.50	-1.79
7901.00	91.200	338.930	5885.07	2131.55	2088.15	-496.11	1757040.19	14610556.20	40°13'45.9647"N	80°34'55.7833"W	2146.28	346.635	1.19	0.07	1.19



Actual Wellpath Report

John Good Jr BRK 3H AWP Proj: 16820'
Page 5 of 10



REFERENCE WELLPATH IDENTIFICATION

Operator	SWN PRODUCTION COMPANY, LLC	Well	John Good Jr BRK 3H
Field	Brooke	API/Legal	
Facility	John Good Jr BRK Pad	Wellbore	John Good Jr BRK 3H AWB
Slot	Slot #3H		

WELLPATH DATA (189 stations)

MD [ft]	Inclination [°]	Azimuth [°]	TVD [ft]	Vert Sect [ft]	North [ft]	East [ft]	Grid East [US ft]	Grid North [US ft]	Latitude	Longitude	Closure Dist [ft]	Closure Dir [°]	DLS [°/100ft]	Build Rate [°/100ft]	Turn Rate [°/100ft]
7992.00	91.140	339.220	5883.21	2222.52	2173.13	-528.61	1757007.71	14610641.15	40°13'46.8060"N	80°34'56.1970"W	2236.50	346.328	0.33	-0.07	0.32
8083.00	91.230	339.340	5881.33	2313.50	2258.23	-560.80	1756975.53	14610726.22	40°13'47.6484"N	80°34'56.6069"W	2326.82	346.054	0.16	0.10	0.13
8173.00	91.050	339.200	5879.53	2403.48	2342.38	-592.65	1756943.69	14610810.34	40°13'48.4815"N	80°34'57.0124"W	2416.19	345.802	0.25	-0.20	-0.16
8265.00	91.260	339.520	5877.68	2495.45	2428.46	-625.07	1756911.28	14610896.38	40°13'49.3336"N	80°34'57.4252"W	2507.62	345.566	0.42	0.23	0.35
8356.00	90.800	339.340	5876.04	2586.43	2513.65	-657.04	1756879.33	14610981.53	40°13'50.1768"N	80°34'57.8322"W	2598.10	345.351	0.54	-0.51	-0.20
8447.00	90.490	338.990	5875.02	2677.42	2598.69	-689.40	1756846.97	14611066.55	40°13'51.0187"N	80°34'58.2443"W	2688.58	345.142	0.51	-0.34	-0.38
8537.00	90.920	339.120	5873.91	2767.40	2682.74	-721.57	1756814.82	14611150.56	40°13'51.8507"N	80°34'58.6540"W	2778.08	344.946	0.50	0.48	0.14
8628.00	90.620	338.920	5872.69	2858.38	2767.70	-754.15	1756782.25	14611235.49	40°13'52.6918"N	80°34'59.0689"W	2868.60	344.758	0.40	-0.33	-0.22
8719.00	91.110	339.650	5871.32	2949.37	2852.80	-786.34	1756750.08	14611320.56	40°13'53.5343"N	80°34'59.4787"W	2959.19	344.590	0.97	0.54	0.80
8809.00	90.710	338.510	5869.89	3039.34	2936.86	-818.47	1756717.96	14611404.58	40°13'54.3664"N	80°34'59.8879"W	3048.77	344.427	1.34	-0.44	-1.27
8900.00	91.200	339.450	5868.37	3130.32	3021.79	-851.10	1756685.34	14611489.48	40°13'55.2072"N	80°35'0.3035"W	3139.36	344.270	1.16	0.54	1.03
8991.00	90.620	338.460	5866.92	3221.29	3106.71	-883.78	1756652.67	14611574.37	40°13'56.0479"N	80°35'0.7196"W	3229.97	344.120	1.26	-0.64	-1.09
9082.00	90.680	339.040	5865.89	3312.27	3191.51	-916.76	1756619.71	14611659.14	40°13'56.8875"N	80°35'1.1397"W	3320.57	343.973	0.64	0.07	0.64
9173.00	90.400	338.670	5865.03	3403.25	3276.38	-949.58	1756586.90	14611743.98	40°13'57.7276"N	80°35'1.5578"W	3411.21	343.837	0.51	-0.31	-0.41
9265.00	91.020	340.590	5863.89	3495.23	3362.62	-981.60	1756554.89	14611830.18	40°13'58.5813"N	80°35'1.9654"W	3502.96	343.727	2.19	0.67	2.09
9355.00	90.550	339.580	5862.66	3585.22	3447.23	-1012.25	1756524.25	14611914.75	40°13'59.4188"N	80°35'2.3555"W	3592.77	343.636	1.24	-0.52	-1.12
9446.00	90.770	339.710	5861.61	3676.22	3532.54	-1043.90	1756492.61	14612000.03	40°14'0.2633"N	80°35'2.7585"W	3683.55	343.537	0.28	0.24	0.14
9537.00	90.830	340.510	5860.34	3767.21	3618.10	-1074.86	1756461.66	14612085.56	40°14'1.1102"N	80°35'3.1524"W	3774.38	343.454	0.88	0.07	0.88
9628.00	90.860	340.810	5859.00	3858.19	3703.96	-1104.99	1756431.54	14612171.39	40°14'1.9600"N	80°35'3.5358"W	3865.27	343.389	0.33	0.03	0.33
9718.00	91.050	340.540	5857.50	3948.17	3788.87	-1134.77	1756401.78	14612256.27	40°14'2.8006"N	80°35'3.9146"W	3955.16	343.327	0.37	0.21	-0.30
9809.00	90.890	340.670	5855.96	4039.15	3874.70	-1164.99	1756371.57	14612342.06	40°14'3.6500"N	80°35'4.2990"W	4046.04	343.266	0.23	-0.18	0.14
9900.00	90.980	340.700	5854.48	4130.13	3960.56	-1195.08	1756341.49	14612427.89	40°14'4.5000"N	80°35'4.6819"W	4136.94	343.209	0.10	0.10	0.03
9991.00	91.020	340.310	5852.89	4221.11	4046.33	-1225.45	1756311.14	14612513.63	40°14'5.3489"N	80°35'5.0682"W	4227.83	343.151	0.43	0.04	-0.43
10080.00	90.950	340.580	5851.36	4310.09	4130.19	-1255.23	1756281.36	14612597.45	40°14'6.1789"N	80°35'5.4472"W	4316.72	343.095	0.31	-0.08	0.30
10171.00	90.680	340.020	5850.06	4401.08	4215.85	-1285.90	1756250.70	14612683.08	40°14'7.0269"N	80°35'5.8375"W	4407.60	343.037	0.68	-0.30	-0.62
10261.00	91.080	339.430	5848.68	4491.07	4300.27	-1317.09	1756219.53	14612767.46	40°14'7.8625"N	80°35'6.2345"W	4497.44	342.971	0.79	0.44	-0.66
10354.00	91.110	340.510	5846.90	4584.05	4387.62	-1348.94	1756187.70	14612854.79	40°14'8.7272"N	80°35'6.6398"W	4590.30	342.910	1.16	0.03	1.16
10445.00	90.460	339.970	5845.66	4675.04	4473.26	-1379.70	1756156.94	14612940.39	40°14'9.5748"N	80°35'7.0313"W	4681.19	342.859	0.93	-0.71	-0.59
10536.00	91.110	340.990	5844.41	4766.02	4559.02	-1410.10	1756126.55	14613026.11	40°14'10.4237"N	80°35'7.4182"W	4772.11	342.813	1.33	0.71	1.12
10627.00	91.020	340.460	5842.72	4857.00	4644.90	-1440.14	1756096.53	14613111.97	40°14'11.2738"N	80°35'7.8003"W	4863.03	342.774	0.59	-0.10	-0.58



Actual Wellpath Report

John Good Jr BRK 3H AWP Proj: 16820'
Page 6 of 10



REFERENCE WELLPATH IDENTIFICATION			
Operator	SWN PRODUCTION COMPANY, LLC	Well	John Good Jr BRK 3H
Field	Brooke	API/Legal	
Facility	John Good Jr BRK Pad	Wellbore	John Good Jr BRK 3H AWB
Slot	Slot #3H		

WELLPATH DATA (189 stations)															
MD [ft]	Inclination [°]	Azimuth [°]	TVD [ft]	Vert Sect [ft]	North [ft]	East [ft]	Grid East [US ft]	Grid North [US ft]	Latitude	Longitude	Closure Dist [ft]	Closure Dir [°]	DLS [°/100ft]	Build Rate [°/100ft]	Turn Rate [°/100ft]
10718.00	90.800	340.630	5841.27	4947.98	4730.69	-1470.44	1756066.24	14613197.73	40°14'12.1230"N	80°35'8.1859"W	4953.95	342.733	0.31	-0.24	0.19
10809.00	91.050	340.710	5839.80	5038.96	4816.55	-1500.56	1756036.13	14613283.55	40°14'12.9728"N	80°35'8.5690"W	5044.88	342.696	0.29	0.27	0.09
10899.00	91.140	340.340	5838.08	5128.94	4901.39	-1530.56	1756006.14	14613368.35	40°14'13.8125"N	80°35'8.9507"W	5134.80	342.658	0.42	0.10	-0.41
10990.00	91.080	340.660	5836.32	5219.92	4987.15	-1560.93	1755975.78	14613454.08	40°14'14.6614"N	80°35'9.3372"W	5225.72	342.620	0.36	-0.07	0.35
11081.00	91.050	340.260	5834.63	5310.90	5072.90	-1591.36	1755945.36	14613539.80	40°14'15.5101"N	80°35'9.7244"W	5316.64	342.583	0.44	-0.03	-0.44
11172.00	91.170	340.380	5832.87	5401.88	5158.56	-1622.00	1755914.74	14613625.43	40°14'16.3581"N	80°35'10.1143"W	5407.56	342.545	0.19	0.13	0.13
11263.00	90.990	340.230	5831.15	5492.86	5244.22	-1652.66	1755884.09	14613711.06	40°14'17.2060"N	80°35'10.5046"W	5498.47	342.508	0.26	-0.20	-0.16
11353.00	90.920	340.730	5829.65	5582.84	5329.04	-1682.73	1755854.03	14613795.84	40°14'18.0455"N	80°35'10.8872"W	5588.40	342.476	0.56	-0.08	0.56
11444.00	91.110	340.120	5828.04	5673.83	5414.77	-1713.21	1755823.56	14613881.53	40°14'18.8940"N	80°35'11.2751"W	5679.33	342.443	0.70	0.21	-0.67
11535.00	90.800	340.890	5826.52	5764.81	5500.54	-1743.58	1755793.20	14613967.27	40°14'19.7430"N	80°35'11.6615"W	5770.27	342.412	0.91	-0.34	0.85
11625.00	90.740	340.550	5825.31	5854.79	5585.48	-1773.29	1755763.50	14614052.18	40°14'20.5838"N	80°35'12.0395"W	5860.22	342.386	0.38	-0.07	-0.38
11716.00	90.740	340.290	5824.14	5945.78	5671.21	-1803.79	1755733.02	14614137.88	40°14'21.4324"N	80°35'12.4276"W	5951.16	342.356	0.29	0.00	-0.29
11808.00	90.770	340.350	5822.93	6037.77	5757.83	-1834.77	1755702.05	14614224.47	40°14'22.2897"N	80°35'12.8218"W	6043.09	342.325	0.07	0.03	0.07
11898.00	90.890	340.550	5821.62	6127.76	5842.63	-1864.88	1755671.95	14614309.24	40°14'23.1291"N	80°35'13.2050"W	6133.04	342.298	0.26	0.13	0.22
11989.00	90.890	340.390	5820.21	6218.74	5928.39	-1895.30	1755641.55	14614394.96	40°14'23.9779"N	80°35'13.5921"W	6223.98	342.271	0.18	0.00	-0.18
12080.00	90.740	340.460	5818.91	6309.73	6014.12	-1925.78	1755611.07	14614480.66	40°14'24.8265"N	80°35'13.9801"W	6314.92	342.244	0.18	-0.16	0.08
12170.00	90.650	340.200	5817.82	6399.72	6098.86	-1956.07	1755580.79	14614565.37	40°14'25.6653"N	80°35'14.3656"W	6404.87	342.218	0.31	-0.10	-0.29
12261.00	90.860	340.560	5816.62	6490.71	6184.57	-1986.63	1755550.25	14614651.04	40°14'26.5137"N	80°35'14.7544"W	6495.81	342.192	0.46	0.23	0.40
12352.00	90.740	340.240	5815.35	6581.70	6270.29	-2017.15	1755519.74	14614736.73	40°14'27.3621"N	80°35'15.1429"W	6586.76	342.167	0.38	-0.13	-0.35
12442.00	90.830	340.180	5814.12	6671.69	6354.97	-2047.62	1755489.28	14614821.37	40°14'28.2003"N	80°35'15.5307"W	6676.70	342.141	0.12	0.10	-0.07
12533.00	90.620	340.380	5812.97	6762.68	6440.62	-2078.32	1755458.59	14614906.99	40°14'29.0481"N	80°35'15.9215"W	6767.65	342.116	0.32	-0.23	0.22
12624.00	90.740	340.130	5811.89	6853.67	6526.27	-2109.06	1755427.86	14614992.60	40°14'29.8959"N	80°35'16.3128"W	6858.59	342.091	0.30	0.13	-0.27
12714.00	90.650	340.240	5810.80	6943.66	6610.93	-2139.57	1755397.37	14615077.24	40°14'30.7339"N	80°35'16.7011"W	6948.54	342.066	0.16	-0.10	0.12
12805.00	90.680	340.010	5809.74	7034.66	6696.50	-2170.51	1755366.44	14615162.78	40°14'31.5810"N	80°35'17.0949"W	7039.48	342.041	0.25	0.03	-0.25
12896.00	90.770	340.350	5808.59	7125.65	6782.11	-2201.36	1755335.60	14615248.35	40°14'32.4283"N	80°35'17.4876"W	7130.42	342.017	0.39	0.10	0.37
12986.00	90.800	340.650	5807.36	7215.63	6866.94	-2231.40	1755305.57	14615333.14	40°14'33.2679"N	80°35'17.8699"W	7220.38	341.999	0.33	0.03	0.33
13077.00	90.430	339.700	5806.38	7306.63	6952.54	-2262.26	1755274.73	14615418.71	40°14'34.1152"N	80°35'18.2627"W	7311.33	341.976	1.12	-0.41	-1.04
13168.00	90.740	340.120	5805.45	7397.62	7038.00	-2293.51	1755243.48	14615504.14	40°14'34.9612"N	80°35'18.6607"W	7402.27	341.950	0.57	0.34	0.46
13258.00	90.280	340.080	5804.65	7487.62	7122.62	-2324.15	1755212.86	14615588.73	40°14'35.7988"N	80°35'19.0506"W	7492.22	341.928	0.51	-0.51	-0.04
13349.00	90.460	340.030	5804.06	7578.61	7208.16	-2355.19	1755181.83	14615674.23	40°14'36.6455"N	80°35'19.4458"W	7583.17	341.906	0.21	0.20	-0.05

REFERENCE WELLPATH IDENTIFICATION

Operator	SWN PRODUCTION COMPANY, LLC	Well	John Good Jr BRK 3H
Field	Brooke	API/Legal	
Facility	John Good Jr BRK Pad	Wellbore	John Good Jr BRK 3H AWB
Slot	Slot #3H		

WELLPATH DATA (189 stations)

MD [ft]	Inclination [°]	Azimuth [°]	TVD [ft]	Vert Sect [ft]	North [ft]	East [ft]	Grid East [US ft]	Grid North [US ft]	Latitude	Longitude	Closure Dist [ft]	Closure Dir [°]	DLS [°/100ft]	Build Rate [°/100ft]	Turn Rate [°/100ft]
13439.00	90.680	340.570	5803.17	7668.61	7292.89	-2385.52	1755151.51	14615758.93	40°14'37.4841"N	80°35'19.8319"W	7673.13	341.887	0.65	0.24	0.60
13530.00	90.740	340.470	5802.04	7759.60	7378.67	-2415.87	1755121.17	14615844.68	40°14'38.3332"N	80°35'20.2181"W	7764.10	341.871	0.13	0.07	-0.11
13621.00	90.950	340.560	5800.70	7850.58	7464.45	-2446.22	1755090.84	14615930.43	40°14'39.1823"N	80°35'20.6044"W	7855.06	341.855	0.25	0.23	0.10
13712.00	90.650	340.410	5799.43	7941.57	7550.21	-2476.62	1755060.45	14616016.16	40°14'40.0312"N	80°35'20.9912"W	7946.03	341.840	0.37	-0.33	-0.16
13805.00	90.650	340.720	5798.37	8034.56	7637.91	-2507.56	1755029.52	14616103.82	40°14'40.8992"N	80°35'21.3850"W	8039.00	341.825	0.33	0.00	0.33
13898.00	90.250	339.700	5797.64	8127.55	7725.41	-2539.04	1754998.05	14616191.29	40°14'41.7653"N	80°35'21.7858"W	8131.96	341.806	1.18	-0.43	-1.10
13989.00	90.710	340.030	5796.88	8218.55	7810.85	-2570.37	1754966.73	14616276.69	40°14'42.6110"N	80°35'22.1846"W	8222.90	341.785	0.62	0.51	0.36
14080.00	90.770	340.590	5795.70	8309.54	7896.52	-2601.03	1754936.09	14616362.33	40°14'43.4590"N	80°35'22.5749"W	8313.86	341.769	0.62	0.07	0.62
14171.00	90.860	340.620	5794.41	8400.52	7982.35	-2631.24	1754905.88	14616448.12	40°14'44.3085"N	80°35'22.9594"W	8404.84	341.756	0.10	0.10	0.03
14262.00	90.830	340.710	5793.07	8491.50	8068.20	-2661.37	1754875.77	14616533.95	40°14'45.1583"N	80°35'23.3428"W	8495.81	341.744	0.10	-0.03	0.10
14353.00	90.770	340.580	5791.80	8582.49	8154.05	-2691.52	1754845.63	14616619.76	40°14'46.0080"N	80°35'23.7266"W	8586.78	341.733	0.16	-0.07	-0.14
14446.00	90.920	340.660	5790.42	8675.47	8241.77	-2722.38	1754814.78	14616707.45	40°14'46.8763"N	80°35'24.1193"W	8679.76	341.721	0.18	0.16	0.09
14538.00	90.770	340.680	5789.07	8767.45	8328.58	-2752.83	1754784.34	14616794.22	40°14'47.7354"N	80°35'24.5068"W	8771.73	341.710	0.16	-0.16	0.02
14631.00	90.550	338.600	5788.00	8860.44	8415.76	-2785.18	1754752.00	14616881.37	40°14'48.5984"N	80°35'24.9188"W	8864.66	341.688	2.25	-0.24	-2.24
14724.00	90.520	338.970	5787.13	8953.42	8502.45	-2818.84	1754718.36	14616968.03	40°14'49.4566"N	80°35'25.3476"W	8957.54	341.658	0.40	-0.03	0.40
14816.00	90.740	339.320	5786.12	9045.40	8588.42	-2851.59	1754685.63	14617053.96	40°14'50.3076"N	80°35'25.7649"W	9049.44	341.632	0.45	0.24	0.38
14909.00	90.710	339.050	5784.94	9138.39	8675.34	-2884.63	1754652.59	14617140.85	40°14'51.1681"N	80°35'26.1858"W	9142.35	341.608	0.29	-0.03	-0.29
15002.00	90.680	339.080	5783.81	9231.37	8762.19	-2917.86	1754619.38	14617227.67	40°14'52.0279"N	80°35'26.6092"W	9235.26	341.582	0.05	-0.03	0.03
15094.00	90.550	339.060	5782.82	9323.36	8848.12	-2950.72	1754586.53	14617313.56	40°14'52.8785"N	80°35'27.0279"W	9327.16	341.557	0.14	-0.14	-0.02
15186.00	90.890	339.660	5781.67	9415.34	8934.21	-2983.15	1754554.11	14617399.62	40°14'53.7307"N	80°35'27.4409"W	9419.09	341.536	0.75	0.37	0.65
15279.00	90.550	339.110	5780.50	9508.33	9021.24	-3015.89	1754521.39	14617486.62	40°14'54.5922"N	80°35'27.8580"W	9512.02	341.515	0.70	-0.37	-0.59
15369.00	90.770	338.800	5779.46	9598.31	9105.24	-3048.21	1754489.08	14617570.58	40°14'55.4237"N	80°35'28.2698"W	9601.92	341.491	0.42	0.24	-0.34
15460.00	90.740	339.370	5778.26	9689.29	9190.23	-3080.69	1754456.61	14617655.54	40°14'56.2651"N	80°35'28.6836"W	9692.83	341.468	0.63	-0.03	0.63
15553.00	90.180	339.220	5777.52	9782.29	9277.22	-3113.57	1754423.74	14617742.50	40°14'57.1262"N	80°35'29.1025"W	9785.76	341.448	0.62	-0.60	-0.16
15645.00	90.150	339.430	5777.25	9874.28	9363.30	-3146.05	1754391.28	14617828.54	40°14'57.9783"N	80°35'29.5163"W	9877.70	341.428	0.23	-0.03	0.23
15737.00	90.340	339.620	5776.86	9966.28	9449.48	-3178.23	1754359.11	14617914.69	40°14'58.8314"N	80°35'29.9262"W	9969.65	341.410	0.29	0.21	0.21
15828.00	90.650	340.180	5776.07	10057.27	9534.94	-3209.50	1754327.85	14618000.11	40°14'59.6773"N	80°35'30.3244"W	10060.61	341.397	0.70	0.34	0.62
15920.00	90.150	339.370	5775.43	10149.27	9621.26	-3241.31	1754296.06	14618086.40	40°15'0.5318"N	80°35'30.7295"W	10152.57	341.382	1.03	-0.54	-0.88
16012.00	90.090	339.370	5775.24	10241.26	9707.36	-3273.72	1754263.65	14618172.47	40°15'1.3841"N	80°35'31.1424"W	10244.52	341.364	0.07	-0.07	0.00
16104.00	90.370	340.580	5774.87	10333.26	9793.80	-3305.22	1754232.16	14618258.87	40°15'2.2396"N	80°35'31.5435"W	10336.49	341.351	1.35	0.30	1.32

REFERENCE WELLPATH IDENTIFICATION			
Operator	SWN PRODUCTION COMPANY, LLC	Well	John Good Jr BRK 3H
Field	Brooke	API/Legal	
Facility	John Good Jr BRK Pad	Wellbore	John Good Jr BRK 3H AWB
Slot	Slot #3H		

WELLPATH DATA (189 stations) † = interpolated, ‡ = extrapolated station															
MD [ft]	Inclination [°]	Azimuth [°]	TVD [ft]	Vert Sect [ft]	North [ft]	East [ft]	Grid East [US ft]	Grid North [US ft]	Latitude	Longitude	Closure Dist [ft]	Closure Dir [°]	DLS [°/100ft]	Build Rate [°/100ft]	Turn Rate [°/100ft]
16195.00	91.290	340.640	5773.55	10424.25	9879.63	-3335.43	1754201.97	14618344.67	40°15'3.0891"N	80°35'31.9280"W	10427.47	341.345	1.01	1.01	0.07
16288.00	90.860	340.730	5771.80	10517.22	9967.38	-3366.19	1754171.22	14618432.39	40°15'3.9577"N	80°35'32.3195"W	10520.45	341.339	0.47	-0.46	0.10
16381.00	90.650	340.760	5770.58	10610.20	10055.17	-3396.85	1754140.57	14618520.14	40°15'4.8266"N	80°35'32.7098"W	10613.43	341.334	0.23	-0.23	0.03
16473.00	90.770	340.690	5769.44	10702.19	10142.00	-3427.22	1754110.21	14618606.94	40°15'5.6861"N	80°35'33.0963"W	10705.42	341.329	0.15	0.13	-0.08
16564.00	90.710	340.430	5768.26	10793.17	10227.81	-3457.51	1754079.94	14618692.72	40°15'6.5353"N	80°35'33.4818"W	10796.41	341.322	0.29	-0.07	-0.29
16655.00	90.710	340.550	5767.14	10884.16	10313.58	-3487.89	1754049.56	14618778.45	40°15'7.3843"N	80°35'33.8686"W	10887.39	341.315	0.13	0.00	0.13
16745.00	90.770	340.530	5765.97	10974.15	10398.43	-3517.88	1754019.59	14618863.27	40°15'8.2241"N	80°35'34.2503"W	10977.37	341.309	0.07	0.07	-0.02
16795.00	90.710	340.660	5765.33	11024.14	10445.58	-3534.49	1754002.99	14618910.41	40°15'8.6909"N	80°35'34.4617"W	11027.37	341.306	0.29	-0.12	0.26
16820.00‡	90.710	340.660	5765.02	11049.14	10469.17	-3542.76	1753994.71	14618933.99	40°15'8.9243"N	80°35'34.5671"W	11052.36	341.304	0.00	0.00	0.00

HOLE & CASING SECTIONS - Ref Wellbore: John Good Jr BRK 3H AWB Ref Wellpath: John Good Jr BRK 3H AWP Proj: 16820'									
String/Diameter	Start MD [ft]	End MD [ft]	Interval [ft]	Start TVD [ft]	End TVD [ft]	Start N/S [ft]	Start E/W [ft]	End N/S [ft]	End E/W [ft]
20in Conductor	26.00	126.00	100.00	26.00	126.00	0.00	0.00	0.10	0.10
17.5in Open Hole	126.00	381.00	255.00	126.00	381.00	0.10	0.10	1.36	0.14
13.375in Casing Surface	26.00	381.00	355.00	26.00	381.00	0.00	0.00	1.36	0.14
12.25in Open Hole	381.00	1660.00	1279.00	381.00	1658.74	1.36	0.14	-29.84	20.88
9.625in Casing Intermediate	26.00	1660.00	1634.00	26.00	1658.74	0.00	0.00	-29.84	20.88
8.75in Open Hole	1660.00	4914.00	3254.00	1658.74	4903.38	-29.84	20.88	-85.61	119.81
8.5in Open Hole	4914.00	16820.00	11906.00	4903.38	5765.02	-85.61	119.81	10469.17	-3542.76
5.5in Casing Production	26.00	16820.00	16794.00	26.00	5765.02	0.00	0.00	10469.17	-3542.76



Actual Wellpath Report

John Good Jr BRK 3H AWP Proj: 16820'
Page 9 of 10



REFERENCE WELLPATH IDENTIFICATION			
Operator	SWN PRODUCTION COMPANY, LLC	Well	John Good Jr BRK 3H
Field	Brooke	API/Legal	
Facility	John Good Jr BRK Pad	Wellbore	John Good Jr BRK 3H AWB
Slot	Slot #3H		

TARGETS								
Name	TVD [ft]	North [ft]	East [ft]	Grid East [US ft]	Grid North [US ft]	Latitude	Longitude	Shape
John Good BRK 3H BHL Rev-3	5760.00	10465.21	-3554.22	1753983.27	14618930.03	40°15'8.8857"N	80°35'34.7150"W	point
John Good BRK 3H LP Rev-3	5905.00	604.68	50.00	1757586.09	14609073.31	40°13'31.2798"N	80°34'48.8329"W	point

WELLPATH COMPOSITION - Ref Wellbore: John Good Jr BRK 3H AWB Ref Wellpath: John Good Jr BRK 3H AWP Proj: 16820'					
Start MD [ft]	End MD [ft]	Positional Uncertainty Model	Log Name/Comment	Wellbore	Survey Date
26.00	324.00	OWSG MWD rev2 + HRGM	01_Premier MWD <17-1/2"> (174'-324')	John Good Jr BRK 3H AWB	4/15/2021
324.00	1579.00	OWSG MWD rev2 + HRGM	02_Premier MWD <12-1/4"> (494'-1579')	John Good Jr BRK 3H AWB	4/15/2021
1579.00	4850.00	OWSG MWD rev2 + HRGM	03_Premier MWD <8-3/4"> (1596'-4850')	John Good Jr BRK 3H AWB	4/15/2021
4850.00	16820.00	BH AutoTrak Curve/eXpress (2019) (HRGM, Short spacing)	04_BH AT Curve <8-1/2"> (4891'-16795')	John Good Jr BRK 3H AWB	4/15/2021

REFERENCE WELLPATH IDENTIFICATION			
Operator	SWN PRODUCTION COMPANY, LLC	Well	John Good Jr BRK 3H
Field	Brooke	API/Legal	
Facility	John Good Jr BRK Pad	Wellbore	John Good Jr BRK 3H AWB
Slot	Slot #3H		

COMMENTS
<p>Wellpath general comments API: 47-009-00321-0000 BH Job #: 110819221 Rig: SDC 40 Duration: 04/17/2021 - 04/19/2021</p>