

Location: Brooke County, WV
Field: Brooke
Facility: Brian Teslovich BRK Pad

Slot: Slot 201H
Well: Brian Teslovich BRK 201H
Wellbore: Brian Teslovich BRK 201H AWB

Location Information

Facility Name		Grid East (US ft)	Grid North (US ft)	Latitude	Longitude
Brian Teslovich BRK Pad		1742753.670	14605851.360	40°13'0.0784"N	80°38'0.2985"W
Slot	Local N (ft)	Local E (ft)	Grid East (US ft)	Grid North (US ft)	Latitude
Slot 201H	-29.06	40.95	1742794.600	14605822.310	40°12'59.7896"N
SDC40 (KB) to Ground level (At Slot: Slot 201H)				26ft	
Mean Sea Level to Ground level (At Slot: Slot 201H)				-1149.6ft	
SDC40 (KB) to Mean Sea Level				1175.6ft	

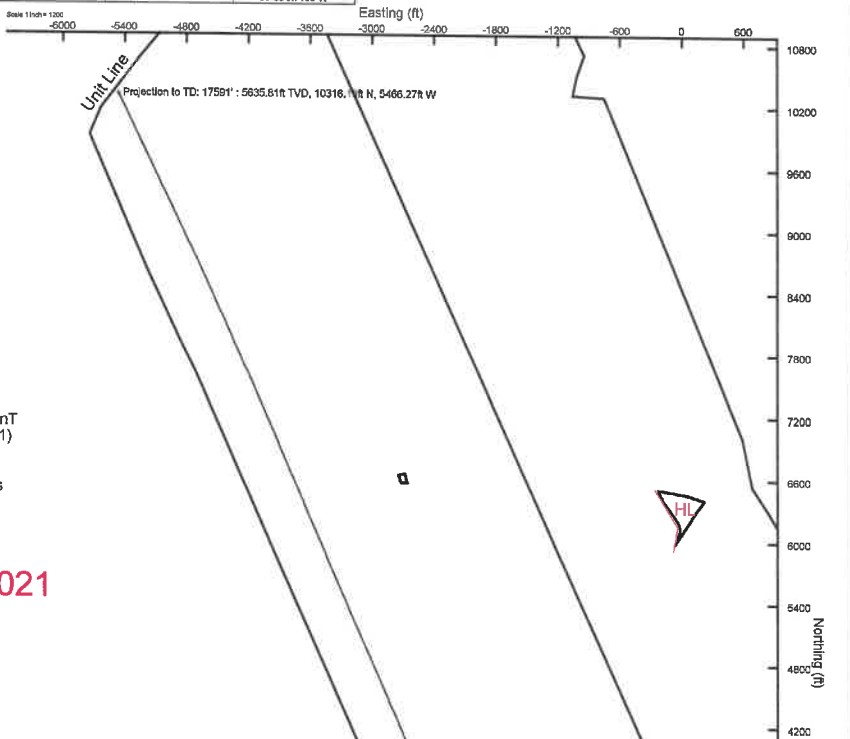
Plot reference well path is Brian Teslovich BRK 201H @ 164° - 285° Proj: 17591'
True vertical depth are referenced to SDC40 (KB)
Reference well path measured depth are referenced to SDC40 (KB)
SDC40 (KB) to Mean Sea Level: 1175.6 feet
Mean Sea Level to Ground level (At Slot: Slot 201H): -1149.6 feet
Offset well path MDs are referenced to each path's default MD datum

Wellpath Composition

Start MD (ft)	End MD (ft)	Tool	Model	Log Name/Comment	Wellbore	Survey Date
26.00	295.00	OWSG EMS rev2	OWSG EMS rev2 + HRGM	1 Tally MWD 164° - 285°	Brian Teslovich BRK 201H AWB	9/28/2021
295.00	1576.00	OWSG MWD rev2	OWSG MWD rev2 + HRGM	2 Tally MWD 435° - 1575°	Brian Teslovich BRK 201H AWB	8/26/2021
1576.00	3347.00	OWSG MWD rev2	OWSG MWD rev2 + HRGM	3 Tally MWD 1713° - 3347°	Brian Teslovich BRK 201H AWB	8/26/2021
3347.00	17591.00	BH AutoTrack CurvesXpress (2019)	BH AutoTrack CurvesXpress (2019) - HRGM, Short spacing	4 BH MWD 3451° - 17563°	Brian Teslovich BRK 201H AWB	10/1/2021

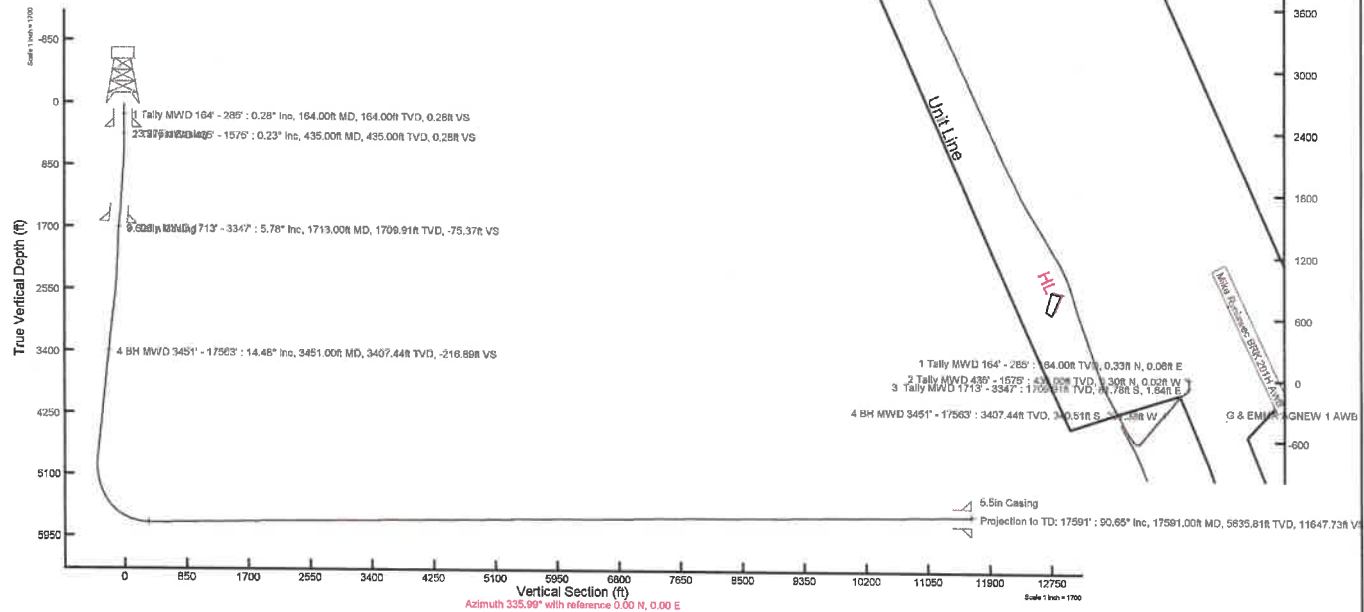
Bottom Hole Location

MD (ft)	Inc (ft)	Az (°)	TVD (ft)	Local N (ft)	Local E (ft)	Grid East (US ft)	Grid North (US ft)	Latitude	Longitude
17591.00	90.650	334.160	5635.81	10316.13	-5466.27	1737330.46	14616134.42	40°14'41.9494"N	80°39'9.7139"W



HDGM2021v1.0 (1900.0 to 2022.0) Dip: 67.30° Field: 52232.3 nT
Magnetic North is 8.14 degrees West of True North (at 9/29/2021)
Grid North is 0.24 degrees East of True North
To correct azimuth from True to Grid subtract 0.24 degrees
To correct azimuth from Magnetic to Grid subtract 8.38 degrees

Duration: 9.29.2021 - 10.3.2021
Rig: SDC 40
BH Job: 111048062
API: 47051023900000





Actual Wellpath Report

Brian Teslovich BRK 201H awp 164' -17563' Proj: 17591'
Page 1 of 9



REFERENCE WELLPATH IDENTIFICATION			
Operator	SWN PRODUCTION COMPANY, LLC	Well	Brian Teslovich BRK 201H
Field	Brooke	API	47051023900000
Facility	Brian Teslovich BRK Pad	Wellbore	Brian Teslovich BRK 201H AWB
Slot	Slot 201H		

REPORT SETUP INFORMATION			
Projection System	NAD83 / UTM Zone 17 North, US feet	Software System	WellArchitect® 6.0
North Reference	Grid	User	Tranlam
Scale	0.999612	Report Generated	10/13/2021 at 4:39:45 PM
Convergence at slot	0.24° East	Database	WA_MPL_EASTERNUS_Defn

WELLPATH LOCATION						
	Local coordinates		Grid coordinates		Geographic coordinates	
	North [ft]	East [ft]	Easting [US ft]	Northing [US ft]	Latitude	Longitude
Slot Location	-29.06	40.95	1742794.60	14605822.31	40°12'59.7896"N	80°37'59.7722"W
Facility Reference Pt			1742753.67	14605851.36	40°13'0.0784"N	80°38'0.2985"W
Field Reference Pt			0.00	0.00	0°00'0.0000"	85°29'19.4780"W

WELLPATH DATUM			
Calculation method	Minimum curvature	SDC40 (KB) to Facility Vertical Datum	1175.60ft
Horizontal Reference Pt	Slot	SDC40 (KB) to Mean Sea Level	1175.60ft
Vertical Reference Pt	SDC40 (KB)	SDC40 (KB) to Ground Level at Slot (Slot 201H)	26.00ft
MD Reference Pt	SDC40 (KB)	Section Origin	N 0.00, E 0.00 ft
Field Vertical Reference	Mean Sea Level	Section Azimuth	335.99°



Actual Wellpath Report

Brian Teslovich BRK 201H awp 164' -17563' Proj: 17591'
Page 2 of 9



REFERENCE WELLPATH IDENTIFICATION

Operator	SWN PRODUCTION COMPANY, LLC	Well	Brian Teslovich BRK 201H
Field	Brooke	API	47051023900000
Facility	Brian Teslovich BRK Pad	Wellbore	Brian Teslovich BRK 201H AWB
Slot	Slot 201H		

WELLPATH DATA (196 stations) † = interpolated, ‡ = extrapolated station

MD [ft]	Course Length [ft]	Inclination [°]	Azimuth [°]	TVD [ft]	Vert Sect [ft]	North [ft]	East [ft]	Grid East [US ft]	Grid North [US ft]	Latitude	Longitude	Closure Dist [ft]	Closure Dir [°]	DLS [°/100ft]
0.00†	0.00	0.000	9.940	0.00	0.00	0.00	0.00	1742794.60	14605822.31	40°12'59.7896"N	80°37'59.7722"W	0.00	0.000	0.00
26.00	26.00	0.000	9.940	26.00	0.00	0.00	0.00	1742794.60	14605822.31	40°12'59.7896"N	80°37'59.7722"W	0.00	0.000	0.00
164.00	138.00	0.280	9.940	164.00	0.28	0.33	0.06	1742794.66	14605822.64	40°12'59.7928"N	80°37'59.7714"W	0.34	9.940	0.20
192.00	28.00	0.090	14.970	192.00	0.35	0.42	0.08	1742794.68	14605822.73	40°12'59.7937"N	80°37'59.7712"W	0.43	10.198	0.68
222.00	30.00	0.110	17.730	222.00	0.39	0.47	0.09	1742794.69	14605822.78	40°12'59.7942"N	80°37'59.7710"W	0.48	10.884	0.07
285.00	63.00	0.210	159.380	285.00	0.32	0.42	0.15	1742794.75	14605822.73	40°12'59.7937"N	80°37'59.7703"W	0.45	19.587	0.48
435.00	150.00	0.230	297.410	435.00	0.28	0.30	-0.02	1742794.58	14605822.61	40°12'59.7925"N	80°37'59.7725"W	0.30	356.051	0.27
526.00	91.00	0.970	179.680	525.99	-0.28	-0.38	-0.18	1742794.42	14605821.93	40°12'59.7858"N	80°37'59.7745"W	0.42	204.933	1.20
617.00	91.00	1.720	182.620	616.97	-2.20	-2.52	-0.24	1742794.36	14605819.79	40°12'59.7647"N	80°37'59.7754"W	2.53	185.371	0.83
708.00	91.00	2.680	185.160	707.90	-5.28	-6.00	-0.49	1742794.11	14605816.31	40°12'59.7303"N	80°37'59.7789"W	6.02	184.673	1.06
799.00	91.00	3.180	184.960	798.78	-9.35	-10.64	-0.90	1742793.70	14605811.68	40°12'59.6845"N	80°37'59.7844"W	10.67	184.838	0.55
891.00	92.00	3.980	181.160	890.60	-14.47	-16.37	-1.19	1742793.42	14605805.95	40°12'59.6278"N	80°37'59.7884"W	16.41	184.142	0.91
982.00	91.00	4.180	180.950	981.37	-20.34	-22.84	-1.30	1742793.30	14605799.48	40°12'59.5639"N	80°37'59.7902"W	22.88	183.268	0.22
1073.00	91.00	4.740	178.050	1072.09	-26.83	-29.92	-1.23	1742793.37	14605792.40	40°12'59.4940"N	80°37'59.7897"W	29.94	182.357	0.66
1164.00	91.00	4.890	177.550	1162.77	-33.92	-37.55	-0.94	1742793.66	14605784.77	40°12'59.4185"N	80°37'59.7863"W	37.56	181.430	0.17
1254.00	90.00	3.490	183.970	1252.53	-39.91	-44.12	-0.96	1742793.64	14605778.21	40°12'59.3537"N	80°37'59.7870"W	44.13	181.251	1.64
1345.00	91.00	3.830	186.200	1343.35	-44.98	-49.90	-1.48	1742793.12	14605772.43	40°12'59.2965"N	80°37'59.7940"W	49.92	181.703	0.40
1441.00	96.00	4.490	181.310	1439.09	-51.15	-56.84	-1.92	1742792.69	14605765.49	40°12'59.2279"N	80°37'59.7999"W	56.88	181.930	0.78
1528.00	87.00	5.230	174.490	1525.78	-57.99	-64.20	-1.61	1742792.99	14605758.14	40°12'59.1552"N	80°37'59.7964"W	64.22	181.439	1.08
1575.00	47.00	5.460	169.300	1572.58	-62.19	-68.53	-0.99	1742793.61	14605753.81	40°12'59.1124"N	80°37'59.7887"W	68.53	180.829	1.14
1713.00	138.00	5.780	168.300	1709.91	-75.37	-81.78	1.64	1742796.24	14605740.56	40°12'58.9813"N	80°37'59.7555"W	81.80	178.854	0.24
1804.00	91.00	4.630	185.600	1800.54	-83.04	-89.92	2.21	1742796.81	14605732.42	40°12'58.9008"N	80°37'59.7486"W	89.95	178.594	2.12
1895.00	91.00	4.860	222.700	1891.25	-87.76	-96.41	-0.77	1742793.83	14605725.93	40°12'58.8368"N	80°37'59.7872"W	96.42	180.455	3.32
1986.00	91.00	5.770	230.220	1981.86	-90.53	-102.17	-6.90	1742787.71	14605720.18	40°12'58.7802"N	80°37'59.8665"W	102.41	183.861	1.26
2077.00	91.00	5.850	225.200	2072.39	-93.42	-108.37	-13.70	1742780.90	14605713.98	40°12'58.7192"N	80°37'59.9546"W	109.23	187.206	0.57
2169.00	92.00	7.310	226.540	2163.78	-97.03	-115.70	-21.28	1742773.33	14605706.66	40°12'58.6471"N	80°38'0.0527"W	117.64	190.421	1.60
2256.00	87.00	10.100	228.890	2249.77	-101.12	-124.52	-31.04	1742763.57	14605697.84	40°12'58.5603"N	80°38'0.1790"W	128.33	193.999	3.23
2347.00	91.00	12.810	233.220	2338.95	-105.69	-135.81	-45.14	1742749.48	14605686.55	40°12'58.4493"N	80°38'0.3613"W	143.12	198.385	3.12
2438.00	91.00	14.370	231.280	2427.40	-110.79	-148.92	-62.03	1742732.59	14605673.45	40°12'58.3205"N	80°38'0.5797"W	161.32	202.614	1.79
2528.00	90.00	14.840	226.450	2514.50	-117.48	-163.84	-79.10	1742715.53	14605658.53	40°12'58.1737"N	80°38'0.8005"W	181.94	205.770	1.45



Actual Wellpath Report

Brian Teslovich BRK 201H awp 164' -17563' Proj: 17591'
Page 3 of 9



REFERENCE WELLPATH IDENTIFICATION

Operator	SWN PRODUCTION COMPANY, LLC	Well	Brian Teslovich BRK 201H
Field	Brooke	API	4705102390000
Facility	Brian Teslovich BRK Pad	Wellbore	Brian Teslovich BRK 201H AWB
Slot	Slot 201H		

WELLPATH DATA (196 stations)

MD [ft]	Course Length [ft]	Inclination [°]	Azimuth [°]	TVD [ft]	Vert Sect [ft]	North [ft]	East [ft]	Grid East [US ft]	Grid North [US ft]	Latitude	Longitude	Closure Dist [ft]	Closure Dir [°]	DLS [°/100ft]
2620.00	92.00	14.380	222.830	2603.53	-125.92	-180.34	-95.40	1742699.23	14605642.04	40°12'58.0114"N	80°38'1.0116"W	204.02	207.880	1.11
2712.00	92.00	14.990	220.760	2692.52	-135.48	-197.73	-110.94	1742683.70	14605624.66	40°12'57.8401"N	80°38'1.2128"W	226.73	209.295	0.87
2803.00	91.00	15.940	220.020	2780.22	-145.97	-216.22	-126.66	1742667.99	14605606.18	40°12'57.6581"N	80°38'1.4164"W	250.58	210.362	1.07
2894.00	91.00	15.250	216.670	2867.88	-157.30	-235.38	-141.84	1742652.81	14605587.02	40°12'57.4693"N	80°38'1.6131"W	274.82	211.073	1.25
2984.00	90.00	15.050	216.950	2954.75	-168.77	-254.22	-155.93	1742638.73	14605568.19	40°12'57.2838"N	80°38'1.7958"W	298.23	211.525	0.24
3075.00	91.00	14.400	219.720	3042.76	-179.51	-272.36	-170.27	1742624.40	14605550.05	40°12'57.1051"N	80°38'1.9815"W	321.20	212.012	1.05
3166.00	91.00	13.740	220.820	3131.03	-189.12	-289.24	-184.56	1742610.11	14605533.18	40°12'56.9388"N	80°38'2.1667"W	343.11	212.541	0.78
3256.00	90.00	13.720	220.900	3218.46	-198.19	-305.40	-198.54	1742596.14	14605517.03	40°12'56.7797"N	80°38'2.3477"W	364.26	213.028	0.03
3347.00	91.00	14.430	224.430	3306.73	-206.93	-321.65	-213.54	1742581.14	14605500.78	40°12'56.6197"N	80°38'2.5419"W	386.08	213.580	1.22
3451.00	104.00	14.480	222.420	3407.44	-216.89	-340.51	-231.38	1742563.31	14605481.94	40°12'56.4342"N	80°38'2.7729"W	411.68	214.197	0.48
3542.00	91.00	14.630	220.160	3495.52	-226.45	-357.69	-246.47	1742548.23	14605464.76	40°12'56.2650"N	80°38'2.9683"W	434.38	214.569	0.65
3632.00	90.00	14.390	220.260	3582.64	-236.26	-374.91	-261.03	1742533.67	14605447.55	40°12'56.0954"N	80°38'3.1569"W	456.83	214.847	0.27
3723.00	91.00	14.160	220.940	3670.84	-245.88	-391.95	-275.63	1742519.08	14605430.52	40°12'55.9276"N	80°38'3.3460"W	479.16	215.116	0.31
3814.00	91.00	13.800	220.340	3759.14	-255.29	-408.63	-289.95	1742504.76	14605413.84	40°12'55.7634"N	80°38'3.5315"W	501.04	215.358	0.43
3904.00	90.00	13.630	220.700	3846.57	-264.47	-424.85	-303.81	1742490.91	14605397.63	40°12'55.6037"N	80°38'3.7110"W	522.30	215.569	0.21
3995.00	91.00	14.360	220.960	3934.87	-273.82	-441.50	-318.20	1742476.52	14605380.98	40°12'55.4397"N	80°38'3.8974"W	544.22	215.781	0.81
4086.00	91.00	13.790	219.350	4023.14	-283.46	-458.41	-332.48	1742462.25	14605364.08	40°12'55.2732"N	80°38'4.0823"W	566.28	215.953	0.76
4177.00	91.00	13.330	219.610	4111.60	-292.98	-474.88	-346.04	1742448.69	14605347.62	40°12'55.1110"N	80°38'4.2580"W	587.58	216.081	0.51
4269.00	92.00	13.050	219.930	4201.18	-302.26	-491.01	-359.47	1742435.27	14605331.49	40°12'54.9521"N	80°38'4.4320"W	608.53	216.208	0.31
4361.00	92.00	13.160	218.980	4290.78	-311.58	-507.12	-372.72	1742422.02	14605315.39	40°12'54.7935"N	80°38'4.6037"W	629.36	216.315	0.26
4454.00	93.00	13.330	219.230	4381.31	-321.21	-523.65	-386.16	1742408.59	14605298.86	40°12'54.6306"N	80°38'4.7778"W	650.64	216.407	0.19
4544.00	90.00	14.010	219.300	4468.76	-330.78	-540.12	-399.63	1742395.13	14605282.40	40°12'54.4685"N	80°38'4.9522"W	671.89	216.497	0.76
4635.00	91.00	14.070	219.470	4557.04	-340.67	-557.18	-413.63	1742381.13	14605265.35	40°12'54.3004"N	80°38'5.1337"W	693.93	216.589	0.08
4727.00	92.00	13.750	220.450	4646.34	-350.37	-574.14	-427.84	1742366.93	14605248.40	40°12'54.1335"N	80°38'5.3176"W	716.01	216.693	0.43
4817.00	90.00	14.410	219.720	4733.64	-359.94	-590.89	-441.93	1742352.84	14605231.65	40°12'53.9685"N	80°38'5.5002"W	737.87	216.793	0.76
4908.00	91.00	13.130	219.130	4822.02	-369.62	-607.62	-455.69	1742339.09	14605214.93	40°12'53.8037"N	80°38'5.6785"W	759.51	216.869	1.42
5000.00	92.00	12.710	224.180	4911.69	-378.10	-622.98	-469.34	1742325.44	14605199.57	40°12'53.6525"N	80°38'5.8552"W	779.99	216.994	1.31
5090.00	90.00	13.500	251.460	4999.43	-380.78	-633.43	-486.22	1742308.57	14605189.13	40°12'53.5499"N	80°38'6.0733"W	798.52	217.509	6.86
5182.00	92.00	11.390	284.300	5089.37	-374.12	-634.60	-505.23	1742289.57	14605187.95	40°12'53.5391"N	80°38'6.3184"W	811.16	218.524	7.91
5272.00	90.00	14.420	308.440	5177.15	-358.66	-625.43	-522.63	1742272.17	14605197.12	40°12'53.6304"N	80°38'6.5423"W	815.05	219.883	6.80

REFERENCE WELLPATH IDENTIFICATION			
Operator	SWN PRODUCTION COMPANY, LLC	Well	Brian Teslovich BRK 201H
Field	Brooke	API	4705102390000
Facility	Brian Teslovich BRK Pad	Wellbore	Brian Teslovich BRK 201H AWB
Slot	Slot 201H		

WELLPATH DATA (196 stations)														
MD [ft]	Course Length [ft]	Inclination [°]	Azimuth [°]	TVD [ft]	Vert Sect [ft]	North [ft]	East [ft]	Grid East [US ft]	Grid North [US ft]	Latitude	Longitude	Closure Dist [ft]	Closure Dir [°]	DLS [°/100ft]
5363.00	91.00	18.570	320.410	5264.41	-334.64	-607.21	-540.75	1742254.06	14605215.34	40°12'53.8112"N	80°38'6.7749"W	813.09	221.687	5.87
5454.00	91.00	24.070	325.900	5349.16	-302.38	-580.65	-560.41	1742234.41	14605241.88	40°12'54.0744"N	80°38'7.0268"W	806.98	223.984	6.42
5545.00	91.00	28.960	327.990	5430.57	-262.27	-546.58	-582.50	1742212.32	14605275.94	40°12'54.4120"N	80°38'7.3099"W	798.79	226.822	5.47
5636.00	91.00	37.030	330.720	5506.83	-213.09	-503.93	-607.63	1742187.21	14605318.58	40°12'54.8345"N	80°38'7.6314"W	789.40	230.330	9.02
5728.00	92.00	45.820	332.600	5575.75	-152.45	-450.37	-636.41	1742158.43	14605372.12	40°12'55.3650"N	80°38'7.9997"W	779.65	234.714	9.65
5820.00	92.00	54.030	332.620	5634.93	-82.23	-387.92	-668.77	1742126.09	14605434.54	40°12'55.9834"N	80°38'8.4135"W	773.13	239.884	8.92
5913.00	93.00	62.730	330.340	5683.65	-3.37	-318.44	-706.61	1742088.27	14605503.99	40°12'56.6715"N	80°38'8.8975"W	775.05	245.741	9.58
6005.00	92.00	68.840	332.160	5721.37	80.20	-244.90	-746.92	1742047.97	14605577.50	40°12'57.3998"N	80°38'9.4132"W	786.04	251.846	6.88
6096.00	91.00	76.050	333.400	5748.80	166.77	-167.79	-786.56	1742008.35	14605654.58	40°12'58.1634"N	80°38'9.9201"W	804.26	257.958	8.03
6188.00	92.00	84.390	338.190	5764.42	257.33	-85.18	-823.64	1741971.28	14605737.16	40°12'58.9813"N	80°38'10.3938"W	828.04	264.095	10.41
6280.00	92.00	90.220	339.590	5768.74	349.07	0.51	-856.72	1741938.21	14605822.82	40°12'59.8295"N	80°38'10.8157"W	856.72	270.034	6.52
6370.00	90.00	90.430	340.320	5768.23	438.85	85.06	-887.57	1741907.37	14605907.33	40°13'0.6662"N	80°38'11.2088"W	891.64	275.474	0.84
6463.00	93.00	91.230	341.760	5766.89	531.47	173.00	-917.78	1741877.17	14605995.24	40°13'1.5364"N	80°38'11.5936"W	933.95	280.675	1.77
6554.00	91.00	91.320	341.770	5764.86	621.99	259.41	-946.25	1741848.72	14606081.62	40°13'2.3915"N	80°38'11.9560"W	981.17	285.331	0.10
6644.00	90.00	90.490	341.090	5763.44	711.57	344.71	-974.91	1741820.07	14606166.89	40°13'3.2356"N	80°38'12.3210"W	1034.06	289.473	1.19
6735.00	91.00	91.630	340.400	5761.76	802.24	430.60	-1004.91	1741790.08	14606252.75	40°13'4.0856"N	80°38'12.7032"W	1093.28	293.195	1.46
6826.00	91.00	90.680	340.770	5759.92	892.93	516.41	-1035.16	1741759.85	14606338.52	40°13'4.9347"N	80°38'13.0885"W	1156.82	296.513	1.12
6917.00	91.00	90.430	340.380	5759.04	983.63	602.23	-1065.42	1741729.60	14606424.30	40°13'5.7840"N	80°38'13.4741"W	1223.84	299.477	0.51
7007.00	90.00	91.020	344.530	5757.90	1073.03	688.01	-1092.54	1741702.48	14606510.06	40°13'6.6328"N	80°38'13.8192"W	1291.13	302.200	4.66
7098.00	91.00	90.830	343.620	5756.43	1163.12	775.51	-1117.51	1741677.53	14606597.52	40°13'7.4984"N	80°38'14.1364"W	1360.23	304.759	1.02
7189.00	91.00	89.380	341.410	5756.26	1253.52	862.30	-1144.85	1741650.20	14606684.27	40°13'8.3572"N	80°38'14.4843"W	1433.26	306.987	2.90
7280.00	91.00	92.180	339.930	5755.03	1344.20	948.15	-1174.96	1741620.10	14606770.09	40°13'9.2067"N	80°38'14.8679"W	1509.81	308.902	3.48
7371.00	91.00	91.450	335.070	5752.14	1435.09	1032.15	-1209.76	1741585.31	14606854.06	40°13'10.0383"N	80°38'15.3121"W	1590.24	310.470	5.40
7461.00	90.00	91.820	331.550	5749.57	1524.94	1112.52	-1250.16	1741544.93	14606934.39	40°13'10.8341"N	80°38'15.8287"W	1673.50	311.666	3.93
7553.00	92.00	92.740	328.900	5745.91	1616.39	1192.30	-1295.80	1741499.30	14607014.15	40°13'11.6243"N	80°38'16.4129"W	1760.88	312.618	3.05
7644.00	91.00	90.580	329.250	5743.28	1706.69	1270.33	-1342.55	1741452.58	14607092.14	40°13'12.3972"N	80°38'17.0113"W	1848.29	313.417	2.40
7735.00	91.00	90.370	329.690	5742.52	1797.10	1348.71	-1388.77	1741406.37	14607170.49	40°13'13.1737"N	80°38'17.6031"W	1935.90	314.161	0.54
7826.00	91.00	90.580	328.970	5741.77	1887.48	1426.98	-1435.19	1741359.97	14607248.73	40°13'13.9490"N	80°38'18.1974"W	2023.87	314.836	0.82
7917.00	91.00	90.460	329.070	5740.94	1977.80	1504.99	-1482.03	1741313.15	14607326.71	40°13'14.7218"N	80°38'18.7971"W	2112.20	315.440	0.17
8007.00	90.00	90.920	328.540	5739.86	2067.09	1581.97	-1528.64	1741266.56	14607403.67	40°13'15.4844"N	80°38'19.3939"W	2199.86	315.982	0.78



Actual Wellpath Report

Brian Teslovich BRK 201H awp 164' -17563' Proj: 17591'
Page 5 of 9



REFERENCE WELLPATH IDENTIFICATION			
Operator	SWN PRODUCTION COMPANY, LLC	Well	Brian Teslovich BRK 201H
Field	Brooke	API	4705102390000
Facility	Brian Teslovich BRK Pad	Wellbore	Brian Teslovich BRK 201H AWB
Slot	Slot 201H		

WELLPATH DATA (196 stations)														
MD [ft]	Course Length [ft]	Inclination [°]	Azimuth [°]	TVD [ft]	Vert Sect [ft]	North [ft]	East [ft]	Grid East [US ft]	Grid North [US ft]	Latitude	Longitude	Closure Dist [ft]	Closure Dir [°]	DLS [°/100ft]
8099.00	92.00	91.390	329.020	5738.00	2158.34	1660.63	-1576.32	1741218.90	14607482.29	40°13'16.2636"N	80°38'20.0044"W	2289.65	316.492	0.73
8190.00	91.00	90.490	332.270	5736.51	2248.92	1739.93	-1620.91	1741174.32	14607561.56	40°13'17.0490"N	80°38'20.5751"W	2377.96	317.028	3.71
8278.00	88.00	89.780	334.880	5736.30	2336.84	1818.72	-1660.07	1741135.17	14607640.32	40°13'17.8292"N	80°38'21.0758"W	2462.44	317.611	3.07
8367.00	89.00	90.580	333.540	5736.02	2425.79	1898.86	-1698.79	1741096.47	14607720.43	40°13'18.6226"N	80°38'21.5708"W	2547.85	318.183	1.75
8458.00	91.00	90.770	333.490	5734.95	2516.70	1980.30	-1739.37	1741055.91	14607801.84	40°13'19.4291"N	80°38'22.0896"W	2635.72	318.706	0.22
8548.00	90.00	90.740	333.650	5733.77	2606.61	2060.89	-1779.43	1741015.87	14607882.39	40°13'20.2270"N	80°38'22.6018"W	2722.80	319.192	0.18
8639.00	91.00	91.290	335.930	5732.15	2697.57	2143.20	-1818.18	1740977.13	14607964.67	40°13'21.0420"N	80°38'23.0970"W	2810.53	319.690	2.58
8730.00	91.00	89.420	335.990	5731.59	2788.56	2226.30	-1855.25	1740940.07	14608047.74	40°13'21.8647"N	80°38'23.5706"W	2897.99	320.194	2.06
8821.00	91.00	90.580	334.650	5731.59	2879.55	2308.99	-1893.24	1740902.09	14608130.40	40°13'22.6833"N	80°38'24.0561"W	2985.93	320.650	1.95
8912.00	91.00	91.630	334.620	5729.83	2970.51	2391.20	-1932.22	1740863.13	14608212.57	40°13'23.4972"N	80°38'24.5542"W	3074.30	321.060	1.15
9002.00	90.00	92.090	336.410	5726.91	3060.46	2473.06	-1969.50	1740825.87	14608294.40	40°13'24.3076"N	80°38'25.0305"W	3161.48	321.467	2.05
9093.00	91.00	89.600	335.860	5725.57	3151.44	2556.26	-2006.31	1740789.07	14608377.57	40°13'25.1313"N	80°38'25.5007"W	3249.58	321.873	2.80
9184.00	91.00	90.400	334.520	5725.57	3242.43	2638.86	-2044.49	1740750.90	14608460.14	40°13'25.9491"N	80°38'25.9887"W	3338.19	322.233	1.71
9274.00	90.00	88.620	335.510	5726.34	3332.40	2720.43	-2082.50	1740712.91	14608541.68	40°13'26.7567"N	80°38'26.4744"W	3426.01	322.566	2.26
9365.00	91.00	91.080	335.630	5726.58	3423.40	2803.27	-2120.14	1740675.29	14608624.49	40°13'27.5768"N	80°38'26.9553"W	3514.73	322.900	2.71
9456.00	91.00	91.140	335.630	5724.82	3514.38	2886.15	-2157.68	1740637.76	14608707.34	40°13'28.3973"N	80°38'27.4349"W	3603.53	323.218	0.07
9546.00	90.00	90.890	335.340	5723.22	3604.36	2968.02	-2195.02	1740600.44	14608789.18	40°13'29.2079"N	80°38'27.9120"W	3691.51	323.515	0.43
9638.00	92.00	90.550	335.530	5722.07	3696.35	3051.69	-2233.26	1740562.21	14608872.81	40°13'30.0362"N	80°38'28.4007"W	3781.57	323.803	0.42
9728.00	90.00	90.090	335.250	5721.56	3786.34	3133.51	-2270.74	1740524.75	14608954.60	40°13'30.8462"N	80°38'28.8796"W	3869.78	324.071	0.60
9820.00	92.00	90.370	335.070	5721.19	3878.33	3217.00	-2309.39	1740486.11	14609038.06	40°13'31.6728"N	80°38'29.3735"W	3960.10	324.327	0.36
9911.00	91.00	90.520	334.850	5720.49	3969.31	3299.45	-2347.90	1740447.61	14609120.47	40°13'32.4890"N	80°38'29.8657"W	4049.57	324.564	0.29
10002.00	91.00	90.460	335.240	5719.71	4060.30	3381.95	-2386.29	1740409.24	14609202.94	40°13'33.3058"N	80°38'30.3564"W	4139.08	324.793	0.43
10092.00	90.00	90.550	335.570	5718.92	4150.29	3463.78	-2423.75	1740371.80	14609284.74	40°13'34.1160"N	80°38'30.8350"W	4227.57	325.018	0.38
10183.00	91.00	90.740	336.760	5717.89	4241.28	3547.01	-2460.52	1740335.04	14609367.94	40°13'34.9399"N	80°38'31.3047"W	4316.88	325.251	1.32
10276.00	93.00	90.860	337.220	5716.59	4334.26	3632.60	-2496.87	1740298.70	14609453.50	40°13'35.7872"N	80°38'31.7689"W	4407.97	325.497	0.51
10366.00	90.00	91.020	336.640	5715.12	4424.23	3715.39	-2532.13	1740263.46	14609536.25	40°13'36.6067"N	80°38'32.2192"W	4496.20	325.725	0.67
10457.00	91.00	90.280	336.480	5714.08	4515.22	3798.88	-2568.33	1740227.27	14609619.71	40°13'37.4331"N	80°38'32.6815"W	4585.61	325.938	0.83
10548.00	91.00	90.980	334.950	5713.08	4606.21	3881.82	-2605.75	1740189.87	14609702.61	40°13'38.2542"N	80°38'33.1597"W	4675.30	326.128	1.85
10639.00	91.00	90.710	337.230	5711.74	4697.19	3964.99	-2642.63	1740153.00	14609785.76	40°13'39.0776"N	80°38'33.6308"W	4764.94	326.317	2.52
10731.00	92.00	90.950	337.340	5710.41	4789.16	4049.85	-2678.15	1740117.50	14609870.58	40°13'39.9176"N	80°38'34.0843"W	4855.28	326.524	0.29



Actual Wellpath Report

Brian Teslovich BRK 201H awp 164' -17563' Proj: 17591'
Page 6 of 9



REFERENCE WELLPATH IDENTIFICATION			
Operator	SWN PRODUCTION COMPANY, LLC	Well	Brian Teslovich BRK 201H
Field	Brooke	API	4705102390000
Facility	Brian Teslovich BRK Pad	Wellbore	Brian Teslovich BRK 201H AWB
Slot	Slot 201H		

WELLPATH DATA (196 stations)														
MD [ft]	Course Length [ft]	Inclination [°]	Azimuth [°]	TVD [ft]	Vert Sect [ft]	North [ft]	East [ft]	Grid East [US ft]	Grid North [US ft]	Latitude	Longitude	Closure Dist [ft]	Closure Dir [°]	DLS ["/100ft]
10824.00	93.00	90.550	336.750	5709.19	4882.14	4135.48	-2714.42	1740081.24	14609956.17	40°13'40.7652"N	80°38'34.5475"W	4946.74	326.720	0.77
10915.00	91.00	91.170	336.590	5707.82	4973.12	4219.03	-2750.45	1740045.22	14610039.69	40°13'41.5922"N	80°38'35.0077"W	5036.38	326.899	0.70
11005.00	90.00	91.230	336.370	5705.94	5063.10	4301.53	-2786.36	1740009.33	14610122.16	40°13'42.4090"N	80°38'35.4664"W	5125.13	327.066	0.25
11097.00	92.00	90.120	336.040	5704.86	5155.09	4385.70	-2823.47	1739972.23	14610206.30	40°13'43.2422"N	80°38'35.9405"W	5215.98	327.227	1.26
11188.00	91.00	90.800	337.540	5704.13	5246.07	4469.33	-2859.33	1739936.38	14610289.90	40°13'44.0701"N	80°38'36.3985"W	5305.73	327.390	1.81
11278.00	90.00	91.020	337.100	5702.70	5336.04	4552.36	-2894.03	1739901.70	14610372.90	40°13'44.8919"N	80°38'36.8416"W	5394.39	327.555	0.55
11370.00	92.00	91.450	334.910	5700.71	5428.01	4636.39	-2931.43	1739864.31	14610456.89	40°13'45.7237"N	80°38'37.3194"W	5485.38	327.696	2.43
11460.00	90.00	90.620	337.580	5699.09	5517.99	4718.74	-2967.68	1739828.08	14610539.21	40°13'46.5390"N	80°38'37.7825"W	5574.37	327.834	3.11
11551.00	91.00	90.280	337.540	5698.37	5608.95	4802.85	-3002.41	1739793.36	14610623.28	40°13'47.3715"N	80°38'38.2260"W	5664.08	327.989	0.38
11641.00	90.00	90.770	336.690	5697.55	5698.93	4885.76	-3037.41	1739758.37	14610706.16	40°13'48.1922"N	80°38'38.6729"W	5752.96	328.131	1.09
11733.00	92.00	89.910	336.270	5697.00	5790.92	4970.11	-3074.12	1739721.67	14610790.48	40°13'49.0272"N	80°38'39.1419"W	5843.99	328.262	1.04
11825.00	92.00	90.400	336.000	5696.75	5882.92	5054.25	-3111.35	1739684.47	14610874.59	40°13'49.8601"N	80°38'39.6174"W	5935.14	328.384	0.61
11916.00	91.00	90.550	336.530	5696.00	5973.92	5137.55	-3147.97	1739647.86	14610957.85	40°13'50.6847"N	80°38'40.0853"W	6025.29	328.503	0.61
12007.00	91.00	90.490	336.760	5695.17	6064.91	5221.09	-3184.05	1739611.80	14611041.36	40°13'51.5117"N	80°38'40.5461"W	6115.38	328.623	0.26
12098.00	91.00	90.030	336.750	5694.76	6155.90	5304.70	-3219.96	1739575.90	14611124.94	40°13'52.3393"N	80°38'41.0048"W	6205.48	328.742	0.51
12189.00	91.00	90.280	336.460	5694.51	6246.89	5388.22	-3256.09	1739539.78	14611208.43	40°13'53.1661"N	80°38'41.4664"W	6295.64	328.855	0.42
12280.00	91.00	90.370	336.550	5694.00	6337.89	5471.67	-3292.37	1739503.51	14611291.85	40°13'53.9922"N	80°38'41.9298"W	6385.84	328.964	0.14
12371.00	91.00	90.490	336.830	5693.31	6428.88	5555.24	-3328.38	1739467.52	14611375.38	40°13'54.8194"N	80°38'42.3898"W	6476.02	329.072	0.33
12462.00	91.00	90.770	336.820	5692.31	6519.86	5638.89	-3364.19	1739431.72	14611459.00	40°13'55.6475"N	80°38'42.8472"W	6566.19	329.180	0.31
12553.00	91.00	90.990	337.170	5690.92	6610.84	5722.65	-3399.75	1739396.18	14611542.72	40°13'56.4765"N	80°38'43.3013"W	6656.35	329.286	0.45
12644.00	91.00	90.800	337.560	5689.49	6701.80	5806.63	-3434.77	1739361.17	14611626.67	40°13'57.3078"N	80°38'43.7485"W	6746.45	329.395	0.48
12737.00	93.00	90.430	336.630	5688.50	6794.77	5892.29	-3470.96	1739324.99	14611712.30	40°13'58.1557"N	80°38'44.2108"W	6838.61	329.499	1.08
12828.00	91.00	91.110	336.670	5687.27	6885.76	5975.83	-3507.02	1739288.94	14611795.81	40°13'58.9827"N	80°38'44.6714"W	6928.90	329.593	0.75
12918.00	90.00	90.920	336.810	5685.68	6975.74	6058.50	-3542.56	1739253.42	14611878.45	40°13'59.8010"N	80°38'45.1254"W	7018.20	329.684	0.26
13010.00	92.00	90.920	336.760	5684.20	7067.72	6143.04	-3578.82	1739217.18	14611962.95	40°14'0.6379"N	80°38'45.5885"W	7109.49	329.776	0.05
13101.00	91.00	91.820	337.210	5682.03	7158.68	6226.77	-3614.39	1739181.62	14612046.65	40°14'1.4667"N	80°38'46.0428"W	7199.75	329.867	1.11
13192.00	91.00	90.890	336.940	5679.87	7249.63	6310.56	-3649.82	1739146.20	14612130.41	40°14'2.2961"N	80°38'46.4954"W	7290.02	329.956	1.06
13283.00	91.00	90.490	336.860	5678.78	7340.61	6394.26	-3685.52	1739110.51	14612214.07	40°14'3.1245"N	80°38'46.9514"W	7380.35	330.042	0.45
13373.00	90.00	90.680	336.620	5677.86	7430.60	6476.94	-3721.06	1739074.99	14612296.72	40°14'3.9430"N	80°38'47.4054"W	7469.74	330.122	0.34
13464.00	91.00	91.080	337.050	5676.46	7521.58	6560.59	-3756.86	1739039.21	14612380.34	40°14'4.7710"N	80°38'47.8626"W	7560.11	330.203	0.65

REFERENCE WELLPATH IDENTIFICATION			
Operator	SWN PRODUCTION COMPANY, LLC	Well	Brian Teslovich BRK 201H
Field	Brooke	API	4705102390000
Facility	Brian Teslovich BRK Pad	Wellbore	Brian Teslovich BRK 201H AWB
Slot	Slot 201H		

WELLPATH DATA (196 stations)														
MD (ft)	Course Length (ft)	Inclination [°]	Azimuth [°]	TVD (ft)	Vert Sect (ft)	North (ft)	East (ft)	Grid East [US ft]	Grid North [US ft]	Latitude	Longitude	Closure Dist (ft)	Closure Dir [°]	DLS [°/100ft]
13555.00	91.00	90.830	336.780	5674.95	7612.56	6644.29	-3792.53	1739003.55	14612464.01	40°14'5.5996"N	80°38'48.3183"W	7650.48	330.282	0.40
13647.00	92.00	90.550	336.670	5673.84	7704.54	6728.80	-3828.88	1738967.21	14612548.48	40°14'6.4361"N	80°38'48.7827"W	7741.90	330.359	0.33
13739.00	92.00	90.710	337.000	5672.83	7796.53	6813.37	-3865.07	1738931.03	14612633.03	40°14'7.2733"N	80°38'49.2450"W	7833.32	330.435	0.40
13829.00	90.00	90.680	336.610	5671.73	7886.51	6896.09	-3900.52	1738895.60	14612715.71	40°14'8.0921"N	80°38'49.6977"W	7922.76	330.507	0.43
13920.00	91.00	90.280	337.050	5670.97	7977.50	6979.75	-3936.32	1738859.81	14612799.34	40°14'8.9202"N	80°38'50.1551"W	8013.21	330.579	0.65
14011.00	91.00	90.550	336.780	5670.31	8068.48	7063.46	-3972.00	1738824.15	14612883.02	40°14'9.7488"N	80°38'50.6109"W	8103.66	330.650	0.42
14100.00	89.00	90.370	336.360	5669.60	8157.48	7145.12	-4007.39	1738788.77	14612964.64	40°14'10.5571"N	80°38'51.0630"W	8192.19	330.714	0.51
14191.00	91.00	90.060	337.190	5669.26	8248.46	7228.74	-4043.27	1738752.90	14613048.23	40°14'11.3849"N	80°38'51.5214"W	8282.68	330.780	0.97
14281.00	90.00	90.280	337.050	5668.99	8338.45	7311.66	-4078.26	1738717.93	14613131.12	40°14'12.2057"N	80°38'51.9683"W	8372.14	330.848	0.29
14372.00	91.00	90.310	335.920	5668.52	8429.44	7395.10	-4114.57	1738681.63	14613214.53	40°14'13.0316"N	80°38'52.4322"W	8462.70	330.909	1.24
14463.00	91.00	90.250	335.640	5668.08	8520.44	7478.09	-4151.90	1738644.32	14613297.49	40°14'13.8532"N	80°38'52.9093"W	8553.37	330.961	0.31
14554.00	91.00	90.520	335.680	5667.47	8611.44	7561.00	-4189.41	1738606.83	14613380.36	40°14'14.6740"N	80°38'53.3887"W	8644.07	331.010	0.30
14647.00	93.00	90.370	335.720	5666.74	8704.43	7645.76	-4227.68	1738568.57	14613465.09	40°14'15.5130"N	80°38'53.8778"W	8736.76	331.060	0.17
14737.00	90.00	90.430	335.640	5666.11	8794.43	7727.77	-4264.74	1738531.52	14613547.07	40°14'16.3249"N	80°38'54.3515"W	8826.46	331.107	0.11
14830.00	93.00	90.460	335.890	5665.39	8887.42	7812.57	-4302.92	1738493.36	14613631.84	40°14'17.1644"N	80°38'54.8394"W	8919.16	331.155	0.27
14921.00	91.00	90.890	335.870	5664.32	8978.42	7895.62	-4340.10	1738456.19	14613714.85	40°14'17.9865"N	80°38'55.3147"W	9009.84	331.203	0.47
15013.00	92.00	90.430	336.040	5663.26	9070.41	7979.63	-4377.58	1738418.72	14613798.83	40°14'18.8182"N	80°38'55.7937"W	9101.53	331.251	0.53
15104.00	91.00	90.430	336.470	5662.58	9161.41	8062.93	-4414.22	1738382.10	14613882.09	40°14'19.6427"N	80°38'56.2619"W	9192.18	331.301	0.47
15196.00	92.00	90.400	336.170	5661.91	9253.40	8147.18	-4451.17	1738345.16	14613966.31	40°14'20.4767"N	80°38'56.7341"W	9283.83	331.350	0.33
15286.00	90.00	91.570	336.090	5660.36	9343.39	8229.47	-4487.59	1738308.76	14614048.57	40°14'21.2913"N	80°38'57.1994"W	9373.50	331.396	1.30
15377.00	91.00	90.430	335.890	5658.78	9434.37	8312.58	-4524.61	1738271.76	14614131.65	40°14'22.1140"N	80°38'57.6725"W	9464.20	331.440	1.27
15470.00	93.00	90.680	336.150	5657.88	9527.37	8397.55	-4562.40	1738233.98	14614216.58	40°14'22.9552"N	80°38'58.1556"W	9556.90	331.485	0.39
15560.00	90.00	90.550	335.960	5656.91	9617.36	8479.80	-4598.93	1738197.47	14614298.80	40°14'23.7694"N	80°38'58.6224"W	9646.61	331.527	0.26
15651.00	91.00	90.490	334.680	5656.08	9708.35	8562.48	-4636.92	1738159.49	14614381.45	40°14'24.5879"N	80°38'59.1081"W	9737.41	331.563	1.41
15741.00	90.00	90.890	335.040	5655.00	9798.33	8643.95	-4675.15	1738121.27	14614462.89	40°14'25.3944"N	80°38'59.5969"W	9827.25	331.593	0.60
15833.00	92.00	90.680	334.680	5653.74	9890.30	8727.22	-4714.24	1738082.20	14614546.13	40°14'26.2189"N	80°39'0.0966"W	9919.10	331.623	0.45
15924.00	91.00	90.580	334.790	5652.74	9981.27	8809.51	-4753.07	1738043.38	14614628.39	40°14'27.0336"N	80°39'0.5933"W	10009.96	331.651	0.16
16015.00	91.00	90.490	334.690	5651.89	10072.25	8891.81	-4791.90	1738004.57	14614710.65	40°14'27.8483"N	80°39'1.0898"W	10100.82	331.679	0.15
16106.00	91.00	90.770	334.890	5650.89	10163.22	8974.14	-4830.66	1737965.82	14614792.95	40°14'28.6634"N	80°39'1.5854"W	10191.68	331.707	0.38
16197.00	91.00	90.650	334.790	5649.76	10254.20	9056.50	-4869.35	1737927.15	14614875.27	40°14'29.4788"N	80°39'2.0801"W	10282.54	331.735	0.17

REFERENCE WELLPATH IDENTIFICATION			
Operator	SWN PRODUCTION COMPANY, LLC	Well	Brian Teslovich BRK 201H
Field	Brooke	API	47051023900000
Facility	Brian Teslovich BRK Pad	Wellbore	Brian Teslovich BRK 201H AWB
Slot	Slot 201H		

WELLPATH DATA (196 stations) † = interpolated, ‡ = extrapolated station														
MD [ft]	Course Length [ft]	Inclination [°]	Azimuth [°]	TVD [ft]	Vert Sect [ft]	North [ft]	East [ft]	Grid East [US ft]	Grid North [US ft]	Latitude	Longitude	Closure Dist [ft]	Closure Dir [°]	DLS [°/100ft]
16288.00	91.00	90.430	334.900	5648.90	10345.17	9138.86	-4908.03	1737888.49	14614957.61	40°14'30.2942"N	80°39'2.5746"W	10373.40	331.762	0.27
16380.00	92.00	90.520	334.400	5648.14	10437.15	9222.00	-4947.41	1737849.12	14615040.71	40°14'31.1173"N	80°39'3.0783"W	10465.29	331.787	0.55
16470.00	90.00	90.250	334.200	5647.54	10527.10	9303.10	-4986.44	1737810.10	14615121.78	40°14'31.9202"N	80°39'3.5775"W	10555.20	331.809	0.37
16562.00	92.00	90.460	334.580	5646.97	10619.07	9386.06	-5026.21	1737770.35	14615204.70	40°14'32.7415"N	80°39'4.0861"W	10647.10	331.831	0.47
16653.00	91.00	90.490	334.870	5646.21	10710.04	9468.34	-5065.06	1737731.52	14615286.96	40°14'33.5562"N	80°39'4.5829"W	10737.98	331.856	0.32
16743.00	90.00	90.980	335.000	5645.06	10800.02	9549.86	-5103.18	1737693.41	14615368.44	40°14'34.3632"N	80°39'5.0704"W	10827.85	331.881	0.56
16834.00	91.00	90.920	335.050	5643.55	10890.99	9632.34	-5141.60	1737655.00	14615450.89	40°14'35.1797"N	80°39'5.5616"W	10918.70	331.907	0.09
16926.00	92.00	90.620	334.510	5642.31	10982.96	9715.56	-5180.80	1737615.82	14615534.08	40°14'36.0036"N	80°39'6.0629"W	11010.58	331.931	0.67
17017.00	91.00	90.680	334.780	5641.28	11073.93	9797.79	-5219.76	1737576.87	14615616.28	40°14'36.8177"N	80°39'6.5612"W	11101.47	331.954	0.30
17108.00	91.00	90.740	334.390	5640.15	11164.90	9879.98	-5258.82	1737537.83	14615698.43	40°14'37.6314"N	80°39'7.0606"W	11192.37	331.975	0.43
17200.00	92.00	90.370	334.640	5639.26	11256.86	9963.02	-5298.40	1737498.27	14615781.44	40°14'38.4536"N	80°39'7.5669"W	11284.27	331.996	0.49
17291.00	91.00	90.520	334.710	5638.55	11347.84	10045.27	-5337.32	1737459.36	14615863.66	40°14'39.2679"N	80°39'8.0647"W	11375.17	332.017	0.18
17382.00	91.00	90.550	334.660	5637.70	11438.81	10127.53	-5376.23	1737420.46	14615945.89	40°14'40.0822"N	80°39'8.5623"W	11466.07	332.038	0.06
17473.00	91.00	90.400	334.650	5636.95	11529.78	10209.77	-5415.19	1737381.53	14616028.10	40°14'40.8964"N	80°39'9.0604"W	11556.97	332.059	0.17
17563.00	90.00	90.650	334.160	5636.12	11619.74	10290.93	-5454.07	1737342.66	14616109.23	40°14'41.7000"N	80°39'9.5577"W	11646.89	332.077	0.61
17591.00‡	28.00	90.650	334.160	5635.81	11647.73	10316.13	-5466.27	1737330.46	14616134.42	40°14'41.9494"N	80°39'9.7138"W	11674.87	332.082	0.00

HOLE & CASING SECTIONS									
- Ref Wellbore: Brian Teslovich BRK 201H AWB Ref Wellpath: Brian Teslovich BRK 201H awp 164' -17563' Proj: 17591'									
String/Diameter	Start MD [ft]	End MD [ft]	Interval [ft]	Start TVD [ft]	End TVD [ft]	Start N/S [ft]	Start E/W [ft]	End N/S [ft]	End E/W [ft]
13.375in Casing	26.00	348.00	322.00	26.00	348.00	0.00	0.00	0.27	0.17
9.625in Casing	26.00	1649.00	1623.00	26.00	1646.23	0.00	0.00	-75.55	0.37
5.5in Casing	26.00	17591.00	17565.00	26.00	5635.81	0.00	0.00	10316.13	-5466.27

REFERENCE WELLPATH IDENTIFICATION

Operator	SWN PRODUCTION COMPANY, LLC	Well	Brian Teslovich BRK 201H
Field	Brooke	API	47051023900000
Facility	Brian Teslovich BRK Pad	Wellbore	Brian Teslovich BRK 201H AWB
Slot	Slot 201H		

TARGETS

Name	TVD [ft]	North [ft]	East [ft]	Grid East [US ft]	Grid North [US ft]	Latitude	Longitude	Shape
Brian Teslovich BRK 201H BHL Rev 3	5625.17	10323.45	-5451.07	1737345.65	14616141.74	40°14'42.0212"N	80°39'9.5175"W	point
Brian Teslovich BRK 201H LP Rev 4	5764.00	-19.53	-843.27	1741951.66	14605802.79	40°12'59.6309"N	80°38'10.6433"W	point
201H Hardline	5800.00	843.98	-1312.77	1741482.34	14606665.96	40°13'8.1829"N	80°38'16.6499"W	polygon
2D Polygon: dimensions not calculated								
Brian Teslovich TP1	5800.00	244.58	-950.41	1741844.56	14606066.79	40°13'2.2451"N	80°38'12.0104"W	point
Brian Teslovich TP2	5800.00	816.44	-1130.82	1741664.22	14606638.43	40°13'7.9034"N	80°38'14.3059"W	circle
2D Circle radius 0.								
Brian Teslovich TP3	5800.00	1779.01	-1659.53	1741135.72	14607600.63	40°13'17.4368"N	80°38'21.0709"W	point

WELLPATH COMPOSITION - Ref Wellbore: Brian Teslovich BRK 201H AWB Ref Wellpath: Brian Teslovich BRK 201H awp 164' -17563' Proj: 17591'

Start MD [ft]	End MD [ft]	Positional Uncertainty Model	Log Name/Comment	Wellbore	Survey Date
26.00	285.00	OWSG EMS rev2 + HRGM	1 Tally MWD 164' - 285'	Brian Teslovich BRK 201H AWB	9/28/2021
285.00	1575.00	OWSG MWD rev2 + HRGM	2 Tally MWD 435' - 1575'	Brian Teslovich BRK 201H AWB	9/28/2021
1575.00	3347.00	OWSG MWD rev2 + HRGM	3 Tally MWD 1713' - 3347'	Brian Teslovich BRK 201H AWB	9/28/2021
3347.00	17591.00	BH AutoTrak Curve/eXpress (2019) (HRGM, Short spacing)	4 BH MWD 3451' - 17563'	Brian Teslovich BRK 201H AWB	10/1/2021