



SWN PRODUCTION COMPANY, LLC



Location: Brooke County, WV
 Field: Brooke
 Facility: Worthley BRK Pad

Slot: 206H
 Well: Worthley BRK 206H
 Wellbore: Worthley BRK 206H AWB

Plot reference wellpath is Worthley BRK 206H awp Proj: 19980	Grid System: NAD83 / UTM Zone 17 North, US feet
True vertical depths are referenced to SDC 501 (KB)	North Reference: Grid north
Reference wellpath measured depths are referenced to SDC 501 (KB)	Scale: True distance
SDC 501 (KB) to Mean Sea Level: 1183.2 feet	Coordinates are in feet referenced to Slot
Mean Sea Level to Ground level (At Slot: 206H): -1157.2 feet	Depths are in feet
Offset wellpath MDs are referenced to each path's default MD datum	Created by: tranlam on 2024-05-28; Database: WA_MPL_EASTERNUS_Defn

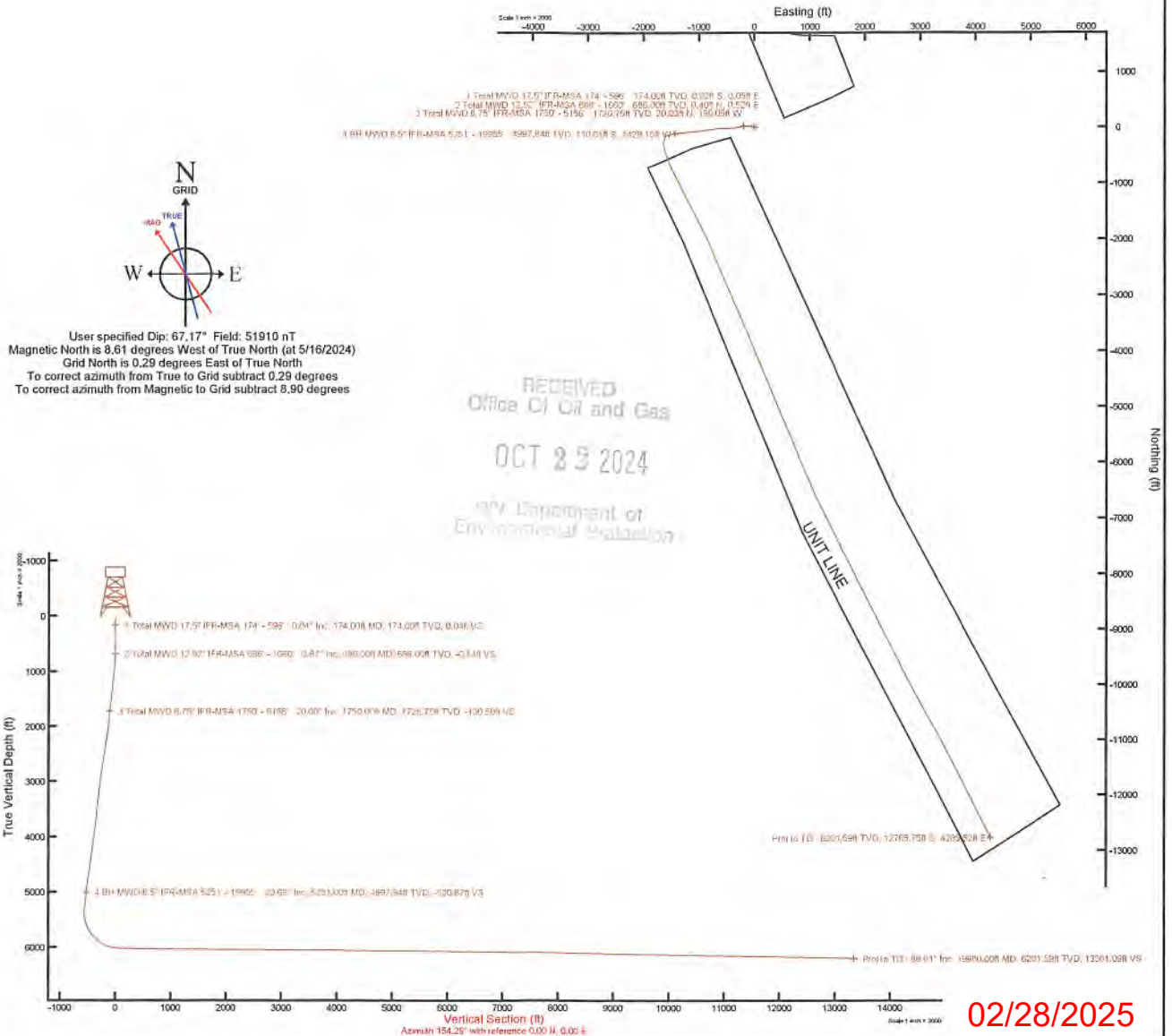
Location Information

Facility Name			Grid East (US ft)	Grid North (US ft)	Latitude	Longitude
Worthley BRK Pad			1764646.294	14605439.176	40°12'55.0140"N	80°33'18.0130"W
Slot	Local N (ft)	Local E (ft)	Grid East (US ft)	Grid North (US ft)	Latitude	Longitude
206H	66.72	-51.49	1764594.820	14605505.870	40°12'55.6759"N	80°33'18.6724"W
SDC 501 (KB) to Ground level (At Slot: 206H)					26ft	
Mean Sea Level to Ground level (At Slot: 206H)					-1157.2ft	
SDC 501 (KB) to Mean Sea Level					1183.2ft	

Bottom Hole Location

MD (ft)	Inc (°)	Az (°)	TVD (ft)	Local N (ft)	Local E (ft)	Grid East (US ft)	Grid North (US ft)	Latitude	Longitude
19980.00	88.610	152.310	6201.59	-12765.75	4285.52	1768878.70	14592745.03	40°10'49.3109"N	80°32'24.2843"W

API: 47009003380000
 BH JOB: 112262719
 DURATION: 05.21.2024 to 05.24.2024
 RIG: SDC 501



02/28/2025

REFERENCE WELLPATH IDENTIFICATION			
Operator	SWN PRODUCTION COMPANY, LLC	Well	Worthley BRK 206H
Field	Brooke	API	47009003380000
Facility	Worthley BRK Pad	Wellbore	Worthley BRK 206H AWB
Slot	206H		

REPORT SETUP INFORMATION			
Projection System	NAD83 / UTM Zone 17 North, US feet	Software System	WellArchitect® 6.0
North Reference	Grid	User	Tranlam
Scale	0.999618	Report Generated	5/28/2024 at 2:48:04 PM
Convergence at slot	0.29° East	Database	WA_MPL_EASTERNUS_Defn

WELLPATH LOCATION						
	Local coordinates		Grid coordinates		Geographic coordinates	
	North[ft]	East[ft]	Easting[US ft]	Northing[US ft]	Latitude	Longitude
Slot Location	66.72	-51.49	1764594.82	14605505.87	40°12'55.6759"N	80°33'18.6724"W
Facility Reference Pt			1764646.29	14605439.18	40°12'55.0140"N	80°33'18.0130"W
Field Reference Pt			0.00	0.00	0°00'0.0000"	85°29'19.4780"W

WELLPATH DATUM			
Calculation method	Minimum curvature	SDC 501 (KB) to Facility Vertical Datum	1183.20ft
Horizontal Reference Pt	Slot	SDC 501 (KB) to Mean Sea Level	1183.20ft
Vertical Reference Pt	SDC 501 (KB)	SDC 501 (KB) to Ground Level at Slot (206H)	26.00ft
MD Reference Pt	SDC 501 (KB)	Section Origin	N 0.00, E 0.00 ft
Field Vertical Reference	Mean Sea Level	Section Azimuth	154.29°

RECEIVED
 Office of Oil and Gas
 May 29 2024
 Department of
 Natural Resources

REFERENCE WELLPATH IDENTIFICATION				
Operator	SWN PRODUCTION COMPANY, LLC		Well	Worthley BRK 206H
Field	Brooke		API	47009003380000
Facility	Worthley BRK Pad		Wellbore	Worthley BRK 206H AWB
Slot	206H			

WELLPATH DATA (223 stations) † = interpolated, ‡ = extrapolated station													
MD [ft]	Inclination [°]	Azimuth [°]	TVD [ft]	Vert Sect [ft]	North [ft]	East [ft]	Grid East [US ft]	Grid North [US ft]	Latitude	Longitude	Closure Dist [ft]	Closure Dir [°]	DLS [°/100ft]
0.00†	0.000	107.770	0.00	0.00	0.00	0.00	1764594.82	14605505.87	40°12'55.6759"N	80°33'18.6724"W	0.00	0.000	0.00
26.00	0.000	107.770	26.00	0.00	0.00	0.00	1764594.82	14605505.87	40°12'55.6759"N	80°33'18.6724"W	0.00	0.000	0.00
174.00	0.040	107.770	174.00	0.04	-0.02	0.05	1764594.87	14605505.85	40°12'55.6757"N	80°33'18.6718"W	0.05	107.770	0.03
234.00	0.020	108.570	234.00	0.06	-0.03	0.08	1764594.90	14605505.84	40°12'55.6756"N	80°33'18.6714"W	0.08	107.871	0.03
324.00	0.090	82.880	324.00	0.07	0.00	0.16	1764594.98	14605505.87	40°12'55.6759"N	80°33'18.6704"W	0.16	89.370	0.09
415.00	0.170	33.530	415.00	0.00	0.15	0.30	1764595.11	14605506.02	40°12'55.6773"N	80°33'18.6686"W	0.33	63.542	0.11
506.00	0.150	99.620	506.00	0.00	0.24	0.49	1764595.31	14605506.11	40°12'55.6782"N	80°33'18.6662"W	0.54	63.819	0.19
543.00	0.250	119.380	543.00	0.09	0.19	0.61	1764595.42	14605506.06	40°12'55.6777"N	80°33'18.6646"W	0.63	72.416	0.32
596.00	0.300	119.940	596.00	0.30	0.07	0.83	1764595.65	14605505.94	40°12'55.6765"N	80°33'18.6618"W	0.83	85.446	0.09
686.00	0.870	311.350	686.00	-0.14	0.40	0.52	1764595.34	14605506.27	40°12'55.6798"N	80°33'18.6658"W	0.65	52.318	1.30
776.00	3.270	309.590	775.93	-3.10	2.49	-1.97	1764592.85	14605508.36	40°12'55.7005"N	80°33'18.6977"W	3.18	321.562	2.67
867.00	5.450	307.060	866.66	-9.30	6.75	-7.42	1764587.40	14605512.61	40°12'55.7429"N	80°33'18.7677"W	10.03	312.264	2.40
959.00	7.090	304.460	958.11	-18.11	12.59	-15.59	1764579.23	14605518.46	40°12'55.8011"N	80°33'18.8726"W	20.04	308.925	1.81
1049.00	8.260	295.800	1047.30	-27.99	18.55	-25.99	1764568.84	14605524.41	40°12'55.8604"N	80°33'19.0063"W	31.93	305.513	1.82
1140.00	8.650	282.990	1137.32	-37.38	22.93	-38.55	1764556.29	14605528.79	40°12'55.9044"N	80°33'19.1678"W	44.85	300.750	2.11
1233.00	9.840	272.050	1229.12	-45.46	24.79	-53.30	1764541.54	14605530.65	40°12'55.9235"N	80°33'19.3579"W	58.79	294.941	2.28
1324.00	11.590	270.080	1318.53	-53.06	25.08	-70.22	1764524.63	14605530.94	40°12'55.9272"N	80°33'19.5759"W	74.56	289.655	1.96
1414.00	13.720	272.740	1406.34	-62.08	25.60	-89.92	1764504.93	14605531.46	40°12'55.9333"N	80°33'19.8299"W	93.50	285.893	2.45
1504.00	16.540	272.460	1493.21	-73.21	26.66	-113.39	1764481.48	14605532.52	40°12'55.9450"N	80°33'20.1323"W	116.48	283.233	3.13
1595.00	17.900	267.800	1580.13	-84.91	26.68	-140.30	1764454.57	14605532.54	40°12'55.9465"N	80°33'20.4793"W	142.82	280.768	2.13
1660.00	18.740	262.780	1641.84	-92.20	24.99	-160.65	1764434.23	14605530.85	40°12'55.9307"N	80°33'20.7416"W	162.58	278.841	2.75
1750.00	20.000	258.240	1726.75	-100.50	20.03	-190.06	1764404.83	14605525.89	40°12'55.8832"N	80°33'21.1210"W	191.11	276.017	2.18
1795.00	20.430	257.150	1768.98	-104.10	16.72	-205.25	1764389.65	14605522.58	40°12'55.8512"N	80°33'21.3171"W	205.93	274.656	1.27
1885.00	20.310	257.770	1853.35	-111.24	9.91	-235.83	1764359.08	14605515.78	40°12'55.7855"N	80°33'21.7117"W	236.04	272.407	0.27
1978.00	21.100	261.760	1940.35	-120.03	4.10	-268.17	1764326.75	14605509.96	40°12'55.7296"N	80°33'22.1290"W	268.21	270.875	1.74
2067.00	22.050	259.880	2023.11	-129.33	-1.14	-300.48	1764294.46	14605504.73	40°12'55.6795"N	80°33'22.5457"W	300.48	269.783	1.32
2158.00	21.890	262.740	2107.51	-139.29	-6.28	-334.12	1764260.83	14605499.59	40°12'55.6303"N	80°33'22.9797"W	334.18	268.923	1.19
2249.00	20.660	266.660	2192.31	-150.77	-9.36	-366.98	1764227.98	14605496.51	40°12'55.6015"N	80°33'23.4034"W	367.10	268.539	2.07
2339.00	20.760	267.030	2276.49	-162.98	-11.11	-398.76	1764196.22	14605494.76	40°12'55.5858"N	80°33'23.8132"W	398.91	268.404	0.18
2430.00	21.400	265.350	2361.40	-175.18	-13.29	-431.41	1764163.58	14605492.58	40°12'55.5658"N	80°33'24.2342"W	431.61	268.235	0.97

REFERENCE WELLPATH IDENTIFICATION			
Operator	SWN PRODUCTION COMPANY, LLC	Well	Worthley BRK 206H
Field	Brooke	API	47009003380000
Facility	Worthley BRK Pad	Wellbore	Worthley BRK 206H AWB
Slot	206H		

WELLPATH DATA (223 stations)													
MD [ft]	Inclination [°]	Azimuth [°]	TVD [ft]	Vert Sect [ft]	North [ft]	East [ft]	Grid East [US ft]	Grid North [US ft]	Latitude	Longitude	Closure Dist [ft]	Closure Dir [°]	DLS ["/100ft]
2521.00	20.600	268.730	2446.36	-187.77	-14.99	-463.96	1764131.03	14605490.88	40°12'55.5506"N	80°33'24.6539"W	464.21	268.149	1.59
2611.00	20.430	268.950	2530.65	-200.87	-15.63	-495.50	1764099.51	14605490.24	40°12'55.5459"N	80°33'25.0605"W	495.74	268.193	0.21
2702.00	20.800	267.400	2615.83	-213.84	-16.66	-527.52	1764067.50	14605489.22	40°12'55.5373"N	80°33'25.4733"W	527.78	268.191	0.72
2793.00	20.010	269.460	2701.12	-226.80	-17.54	-559.23	1764035.81	14605488.34	40°12'55.5302"N	80°33'25.8821"W	559.50	268.204	1.17
2885.00	19.970	268.950	2787.58	-240.05	-17.97	-590.68	1764004.37	14605487.90	40°12'55.5274"N	80°33'26.2875"W	590.95	268.257	0.19
2975.00	20.580	266.400	2872.00	-252.42	-19.25	-621.83	1763973.23	14605486.63	40°12'55.5164"N	80°33'26.6891"W	622.13	268.227	1.19
3068.00	21.200	263.880	2958.89	-264.21	-22.07	-654.86	1763940.21	14605483.81	40°12'55.4902"N	80°33'27.1151"W	655.24	268.070	1.17
3159.00	21.570	261.210	3043.62	-274.59	-26.38	-687.76	1763907.33	14605479.50	40°12'55.4492"N	80°33'27.5394"W	688.26	267.804	1.14
3251.00	20.110	262.130	3129.60	-284.36	-31.13	-720.14	1763874.96	14605474.75	40°12'55.4038"N	80°33'27.9571"W	720.81	267.525	1.63
3342.00	19.680	260.910	3215.17	-293.54	-35.69	-750.77	1763844.34	14605470.19	40°12'55.3603"N	80°33'28.3522"W	751.61	267.278	0.66
3433.00	19.890	263.770	3300.80	-303.08	-39.79	-781.28	1763813.84	14605466.09	40°12'55.3212"N	80°33'28.7458"W	782.30	267.084	1.09
3523.00	20.350	264.380	3385.31	-313.56	-42.98	-812.08	1763783.05	14605462.90	40°12'55.2912"N	80°33'29.1430"W	813.21	266.970	0.56
3614.00	20.760	262.890	3470.52	-324.14	-46.53	-843.83	1763751.32	14605459.36	40°12'55.2577"N	80°33'29.5525"W	845.11	266.844	0.73
3704.00	20.650	262.960	3554.70	-334.31	-50.45	-875.41	1763719.75	14605455.44	40°12'55.2205"N	80°33'29.9597"W	876.86	266.702	0.13
3795.00	20.410	261.840	3639.93	-344.23	-54.67	-907.04	1763688.13	14605451.22	40°12'55.1804"N	80°33'30.3678"W	908.68	266.551	0.51
3885.00	20.630	263.610	3724.22	-354.21	-58.66	-938.33	1763656.85	14605447.23	40°12'55.1425"N	80°33'30.7714"W	940.16	266.423	0.73
3978.00	20.400	263.070	3811.32	-364.85	-62.44	-970.70	1763624.49	14605443.45	40°12'55.1067"N	80°33'31.1889"W	972.71	266.320	0.32
4069.00	20.890	261.870	3896.47	-374.85	-66.65	-1002.51	1763592.70	14605439.25	40°12'55.0667"N	80°33'31.5991"W	1004.72	266.197	0.71
4159.00	21.070	263.750	3980.51	-385.09	-70.68	-1034.47	1763560.74	14605435.22	40°12'55.0285"N	80°33'32.0114"W	1036.89	266.091	0.77
4252.00	21.410	266.120	4067.19	-396.97	-73.65	-1068.03	1763527.20	14605432.25	40°12'55.0008"N	80°33'32.4441"W	1070.56	266.055	0.99
4342.00	21.280	264.370	4151.02	-408.69	-76.36	-1100.67	1763494.57	14605429.54	40°12'54.9756"N	80°33'32.8651"W	1103.32	266.031	0.72
4434.00	21.210	263.820	4236.77	-419.98	-79.79	-1133.83	1763461.43	14605426.11	40°12'54.9433"N	80°33'33.2927"W	1136.63	265.975	0.23
4525.00	21.270	264.620	4321.59	-431.22	-83.11	-1166.63	1763428.64	14605422.79	40°12'54.9121"N	80°33'33.7157"W	1169.58	265.925	0.33
4615.00	20.460	263.060	4405.68	-441.95	-86.54	-1198.50	1763396.78	14605419.36	40°12'54.8798"N	80°33'34.1267"W	1201.62	265.870	1.09
4705.00	20.560	261.610	4489.98	-451.72	-90.75	-1229.75	1763365.55	14605415.16	40°12'54.8397"N	80°33'34.5298"W	1233.09	265.780	0.58
4797.00	21.440	263.920	4575.87	-462.18	-94.89	-1262.45	1763332.86	14605411.02	40°12'54.8004"N	80°33'34.9516"W	1266.01	265.702	1.31
4887.00	21.550	266.480	4659.61	-473.95	-97.64	-1295.30	1763300.02	14605408.26	40°12'54.7748"N	80°33'35.3753"W	1298.98	265.689	1.05
4974.00	21.900	266.670	4740.43	-486.16	-99.57	-1327.45	1763267.88	14605406.34	40°12'54.7574"N	80°33'35.7897"W	1331.18	265.711	0.41
5067.00	22.040	265.760	4826.68	-499.15	-101.86	-1362.16	1763233.18	14605404.05	40°12'54.7364"N	80°33'36.2374"W	1365.97	265.723	0.40
5158.00	21.720	263.880	4911.13	-511.04	-104.92	-1395.93	1763199.42	14605400.99	40°12'54.7078"N	80°33'36.6729"W	1399.87	265.702	0.85

REFERENCE WELLPATH IDENTIFICATION			
Operator	SWN PRODUCTION COMPANY, LLC	Well	Worthley BRK 206H
Field	Brooke	API	47009003380000
Facility	Worthley BRK Pad	Wellbore	Worthley BRK 206H AWB
Slot	206H		

WELLPATH DATA (223 stations)													
MD [ft]	Inclination [°]	Azimuth [°]	TVD [ft]	Vert Sect [ft]	North [ft]	East [ft]	Grid East [US ft]	Grid North [US ft]	Latitude	Longitude	Closure Dist [ft]	Closure Dir [°]	DLS ["/100ft]
5251.00	20.680	258.580	4997.84	-520.87	-110.01	-1429.15	1763166.22	14605395.90	40°12'54.6592"N	80°33'37.1013"W	1433.37	265.598	2.34
5342.00	20.730	259.450	5082.96	-529.05	-116.14	-1460.73	1763134.65	14605389.78	40°12'54.6001"N	80°33'37.5088"W	1465.34	265.454	0.34
5433.00	20.010	260.330	5168.27	-537.56	-121.70	-1491.91	1763103.48	14605384.21	40°12'54.5467"N	80°33'37.9111"W	1496.87	265.336	0.86
5524.00	19.970	259.030	5253.79	-545.82	-127.28	-1522.51	1763072.89	14605378.64	40°12'54.4931"N	80°33'38.3059"W	1527.82	265.221	0.49
5614.00	20.810	255.660	5338.15	-552.88	-134.16	-1553.09	1763042.32	14605371.76	40°12'54.4266"N	80°33'38.7005"W	1558.88	265.063	1.60
5705.00	21.050	235.110	5423.26	-553.46	-147.53	-1582.20	1763013.23	14605358.40	40°12'54.2959"N	80°33'39.0765"W	1589.06	264.673	8.03
5795.00	22.470	215.230	5506.96	-542.51	-170.86	-1605.41	1762990.03	14605335.08	40°12'54.0665"N	80°33'39.3772"W	1614.48	263.925	8.30
5887.00	26.650	202.480	5590.68	-520.19	-204.32	-1623.46	1762971.98	14605301.63	40°12'53.7367"N	80°33'39.6121"W	1636.27	262.827	7.31
5980.00	31.710	191.340	5671.91	-486.73	-247.62	-1636.26	1762959.19	14605258.35	40°12'53.3095"N	80°33'39.7798"W	1654.89	261.395	7.96
6071.00	37.300	178.220	5746.98	-442.35	-298.74	-1640.12	1762955.33	14605207.25	40°12'52.8045"N	80°33'39.8327"W	1667.10	259.677	10.19
6163.00	44.310	167.590	5816.65	-385.46	-358.13	-1632.33	1762963.12	14605147.88	40°12'52.2172"N	80°33'39.7361"W	1671.15	257.626	10.71
6255.00	50.150	163.300	5879.12	-319.23	-423.41	-1615.25	1762980.19	14605082.62	40°12'51.5713"N	80°33'39.5202"W	1669.83	255.311	7.21
6347.00	59.530	161.400	5932.04	-244.84	-494.98	-1592.41	1763003.03	14605011.08	40°12'50.8630"N	80°33'39.2303"W	1667.56	252.733	10.33
6438.00	69.130	160.140	5971.42	-163.44	-572.31	-1565.39	1763030.03	14604933.78	40°12'50.0974"N	80°33'38.8870"W	1666.73	249.917	10.62
6530.00	76.260	157.050	5998.77	-75.91	-654.01	-1533.32	1763062.09	14604852.11	40°12'49.2885"N	80°33'38.4788"W	1666.97	246.900	8.39
6622.00	83.270	154.130	6015.11	14.53	-736.38	-1495.91	1763099.49	14604769.77	40°12'48.4727"N	80°33'38.0018"W	1667.33	243.791	8.23
6713.00	88.920	153.300	6021.31	105.28	-817.75	-1455.72	1763139.66	14604688.44	40°12'47.6667"N	80°33'37.4890"W	1669.68	240.675	6.28
6805.00	89.230	153.590	6022.79	197.26	-900.03	-1414.59	1763180.77	14604606.19	40°12'46.8516"N	80°33'36.9641"W	1676.64	237.534	0.46
6896.00	88.240	151.620	6024.80	288.19	-980.80	-1372.73	1763222.61	14604525.45	40°12'46.0514"N	80°33'36.4298"W	1687.12	234.455	2.42
6988.00	89.420	153.430	6026.68	380.12	-1062.40	-1330.30	1763265.03	14604443.88	40°12'45.2429"N	80°33'35.8880"W	1702.47	231.388	2.35
7080.00	89.050	152.860	6027.91	472.09	-1144.47	-1288.74	1763306.57	14604361.84	40°12'44.4299"N	80°33'35.3577"W	1723.57	228.393	0.74
7172.00	89.200	153.290	6029.31	564.06	-1226.49	-1247.09	1763348.21	14604279.85	40°12'43.6173"N	80°33'34.8260"W	1749.15	225.477	0.49
7264.00	88.860	152.240	6030.87	656.01	-1308.28	-1204.99	1763390.29	14604198.09	40°12'42.8071"N	80°33'34.2886"W	1778.65	222.647	1.20
7356.00	88.520	152.450	6032.97	747.94	-1389.75	-1162.30	1763432.96	14604116.66	40°12'41.9999"N	80°33'33.7436"W	1811.72	219.907	0.43
7447.00	89.630	152.410	6034.44	838.88	-1470.40	-1120.19	1763475.06	14604036.03	40°12'41.2008"N	80°33'33.2060"W	1848.49	217.301	1.22
7539.00	90.800	153.000	6034.10	930.84	-1552.16	-1078.00	1763517.23	14603954.31	40°12'40.3909"N	80°33'32.6674"W	1889.78	214.781	1.42
7631.00	89.600	153.400	6033.78	1022.82	-1634.27	-1036.52	1763558.69	14603872.23	40°12'39.5774"N	80°33'32.1380"W	1935.26	212.385	1.37
7723.00	89.320	152.630	6034.64	1114.79	-1716.25	-994.78	1763600.42	14603790.28	40°12'38.7652"N	80°33'31.6053"W	1983.71	210.098	0.89
7814.00	90.000	153.020	6035.18	1205.76	-1797.20	-953.22	1763641.96	14603709.36	40°12'37.9632"N	80°33'31.0748"W	2034.35	207.941	0.86
7906.00	89.720	153.380	6035.41	1297.74	-1879.32	-911.74	1763683.43	14603627.27	40°12'37.1497"N	80°33'30.5454"W	2088.81	205.880	0.50

REFERENCE WELLPATH IDENTIFICATION			
Operator	SWN PRODUCTION COMPANY, LLC	Well	Worthley BRK 206H
Field	Brooke	API	47009003380000
Facility	Worthley BRK Pad	Wellbore	Worthley BRK 206H AWB
Slot	206H		

WELLPATH DATA (223 stations)													
MD [ft]	Inclination [°]	Azimuth [°]	TVD [ft]	Vert Sect [ft]	North [ft]	East [ft]	Grid East [US ft]	Grid North [US ft]	Latitude	Longitude	Closure Dist [ft]	Closure Dir [°]	DLS ["/100ft]
7998.00	89.420	152.900	6036.10	1389.72	-1961.39	-870.18	1763724.98	14603545.23	40°12'36.3367"N	80°33'30.0149"W	2145.76	203.925	0.62
8089.00	89.110	154.810	6037.26	1480.71	-2043.07	-830.08	1763765.06	14603463.58	40°12'35.5275"N	80°33'29.5034"W	2205.26	202.111	2.13
8181.00	88.490	157.030	6039.19	1572.64	-2127.04	-792.56	1763802.57	14603379.65	40°12'34.6959"N	80°33'29.0251"W	2269.90	200.436	2.50
8273.00	89.630	156.660	6040.70	1664.54	-2211.62	-756.39	1763838.73	14603295.10	40°12'33.8584"N	80°33'28.5643"W	2337.38	198.881	1.30
8364.00	89.350	156.310	6041.51	1755.47	-2295.06	-720.08	1763875.02	14603211.70	40°12'33.0321"N	80°33'28.1017"W	2405.37	197.419	0.49
8456.00	89.450	154.850	6042.47	1847.44	-2378.82	-682.05	1763913.04	14603127.97	40°12'32.2025"N	80°33'27.6169"W	2474.67	195.998	1.59
8548.00	90.430	157.370	6042.57	1939.38	-2462.93	-644.79	1763950.28	14603043.89	40°12'31.3695"N	80°33'27.1422"W	2545.93	194.671	2.94
8639.00	89.690	157.160	6042.48	2030.26	-2546.86	-609.62	1763985.43	14602959.99	40°12'30.5383"N	80°33'26.8943"W	2618.80	193.461	0.85
8731.00	89.260	156.100	6043.32	2122.18	-2631.31	-573.13	1764021.91	14602875.58	40°12'29.7021"N	80°33'26.2294"W	2693.00	192.288	1.24
8823.00	89.850	156.420	6044.03	2214.12	-2715.52	-536.10	1764058.93	14602791.40	40°12'28.8681"N	80°33'25.7574"W	2767.93	191.168	0.73
8914.00	89.970	157.240	6044.18	2305.03	-2799.18	-500.29	1764094.72	14602707.77	40°12'28.0396"N	80°33'25.3013"W	2843.53	190.133	0.91
9006.00	89.880	156.610	6044.30	2398.93	-2883.82	-464.23	1764130.77	14602623.16	40°12'27.2014"N	80°33'24.8421"W	2920.94	189.145	0.69
9098.00	89.820	156.780	6044.54	2488.85	-2968.31	-427.84	1764167.15	14602538.70	40°12'26.3647"N	80°33'24.3784"W	2998.98	188.202	0.20
9189.00	89.480	157.230	6045.09	2579.74	-3052.08	-392.29	1764202.68	14602454.97	40°12'25.5351"N	80°33'23.9256"W	3077.18	187.324	0.62
9281.00	88.650	157.090	6046.59	2671.62	-3136.85	-356.58	1764238.38	14602370.22	40°12'24.6956"N	80°33'23.4709"W	3157.05	186.485	0.91
9373.00	88.770	156.230	6048.67	2763.51	-3221.30	-320.14	1764274.80	14602285.81	40°12'23.8593"N	80°33'23.0067"W	3237.17	185.676	0.94
9464.00	89.570	155.270	6049.98	2854.47	-3304.26	-282.77	1764312.16	14602202.88	40°12'23.0377"N	80°33'22.5304"W	3316.34	184.891	1.37
9556.00	91.320	157.530	6049.27	2946.40	-3388.55	-245.94	1764348.97	14602118.62	40°12'22.2029"N	80°33'22.0611"W	3397.47	184.151	3.11
9648.00	89.260	156.000	6048.80	3038.30	-3473.08	-209.65	1764385.25	14602034.12	40°12'21.3658"N	80°33'21.5989"W	3479.41	183.454	2.79
9739.00	89.450	156.100	6049.83	3129.25	-3556.24	-172.72	1764422.17	14601950.99	40°12'20.5422"N	80°33'21.1282"W	3560.44	182.780	0.24
9831.00	89.350	156.530	6050.79	3221.19	-3640.49	-135.76	1764459.11	14601866.78	40°12'19.7079"N	80°33'20.6573"W	3643.02	182.136	0.48
9923.00	89.540	157.550	6051.68	3313.08	-3725.20	-99.87	1764494.98	14601782.11	40°12'18.8690"N	80°33'20.2003"W	3726.53	181.536	1.13
10015.00	89.750	157.510	6052.25	3404.93	-3810.21	-64.71	1764530.13	14601697.12	40°12'18.0272"N	80°33'19.7526"W	3810.76	180.973	0.23
10107.00	89.480	157.160	6052.87	3496.80	-3895.10	-29.26	1764565.57	14601612.26	40°12'17.1865"N	80°33'19.3012"W	3895.21	180.430	0.48
10198.00	89.660	157.270	6053.55	3587.68	-3979.00	5.98	1764600.80	14601528.40	40°12'16.3557"N	80°33'18.8524"W	3979.00	179.914	0.23
10290.00	89.540	156.940	6054.20	3679.56	-4063.75	41.77	1764636.57	14601443.68	40°12'15.5165"N	80°33'18.3966"W	4063.96	179.411	0.38
10382.00	89.970	157.600	6054.59	3771.44	-4148.60	77.32	1764672.11	14601358.86	40°12'14.6762"N	80°33'17.9440"W	4149.32	178.932	0.86
10474.00	89.570	157.270	6054.96	3863.30	-4233.56	112.62	1764707.40	14601273.94	40°12'13.8349"N	80°33'17.4945"W	4235.06	178.476	0.56
10565.00	89.420	157.660	6055.76	3954.15	-4317.61	147.49	1764742.26	14601189.92	40°12'13.0027"N	80°33'17.0505"W	4320.13	178.043	0.46
10657.00	89.660	157.630	6056.50	4045.99	-4402.69	182.48	1764777.23	14601104.87	40°12'12.1601"N	80°33'16.6050"W	4406.47	177.627	0.26

REFERENCE WELLPATH IDENTIFICATION			
Operator	SWN PRODUCTION COMPANY, LLC	Well	Worthley BRK 206H
Field	Brooke	API	47009003380000
Facility	Worthley BRK Pad	Wellbore	Worthley BRK 206H AWB
Slot	206H		

WELLPATH DATA (223 stations)													
MD [ft]	Inclination [°]	Azimuth [°]	TVD [ft]	Vart Sect [ft]	North [ft]	East [ft]	Grid East [US ft]	Grid North [US ft]	Latitude	Longitude	Closure Dist [ft]	Closure Dir [°]	DLS [°/100ft]
10749.00	89.420	157.150	6057.24	4137.86	-4487.62	217.85	1764812.59	14601019.98	40°12'11.3192"N	80°33'16.1547"W	4492.90	177.221	0.58
10841.00	89.480	157.180	6058.12	4229.74	-4572.40	253.56	1764848.28	14600935.23	40°12'10.4796"N	80°33'15.7001"W	4579.43	176.826	0.07
10932.00	87.750	158.270	6060.32	4320.54	-4656.58	288.04	1764882.75	14600851.08	40°12'9.6460"N	80°33'15.2611"W	4665.48	176.460	2.25
11024.00	91.170	157.550	6061.19	4412.34	-4741.81	322.63	1764917.32	14600765.88	40°12'8.8020"N	80°33'14.8208"W	4752.77	176.108	3.80
11116.00	89.720	157.350	6060.47	4504.19	-4826.77	357.91	1764952.59	14600680.95	40°12'7.9607"N	80°33'14.3717"W	4840.02	175.759	1.59
11208.00	89.420	157.240	6061.16	4596.07	-4911.64	393.42	1764988.09	14600596.12	40°12'7.1203"N	80°33'13.9195"W	4927.37	175.420	0.35
11299.00	89.260	157.250	6062.21	4686.94	-4995.55	428.61	1765023.27	14600512.24	40°12'6.2894"N	80°33'13.4714"W	5013.91	175.096	0.18
11391.00	89.380	157.450	6063.30	4778.80	-5080.45	464.04	1765058.68	14600427.37	40°12'5.4486"N	80°33'13.0203"W	5101.60	174.781	0.25
11483.00	89.880	156.890	6063.90	4870.68	-5165.24	499.73	1765094.36	14600342.61	40°12'4.6090"N	80°33'12.5658"W	5189.36	174.474	0.82
11575.00	89.690	157.550	6064.24	4962.56	-5250.06	535.36	1765129.97	14600257.82	40°12'3.7690"N	80°33'12.1122"W	5277.29	174.178	0.75
11666.00	89.260	156.940	6065.08	5053.43	-5333.98	570.55	1765165.15	14600173.94	40°12'2.9380"N	80°33'11.6641"W	5364.40	173.895	0.82
11758.00	89.880	156.800	6065.77	5145.34	-5418.58	606.69	1765201.28	14600089.37	40°12'2.1002"N	80°33'11.2039"W	5452.44	173.611	0.69
11850.00	90.090	156.640	6065.79	5237.26	-5503.09	643.05	1765237.62	14600004.90	40°12'1.2633"N	80°33'10.7408"W	5540.53	173.335	0.29
11941.00	89.690	158.020	6065.97	5328.12	-5587.05	678.12	1765272.68	14599920.96	40°12'0.4318"N	80°33'10.2942"W	5628.06	173.080	1.58
12033.00	88.980	157.620	6067.03	5419.94	-5672.24	712.85	1765307.40	14599835.81	40°11'59.5883"N	80°33'9.8522"W	5716.86	172.837	0.89
12125.00	89.110	157.930	6068.57	5511.76	-5757.39	747.65	1765342.18	14599750.69	40°11'58.7451"N	80°33'9.4093"W	5805.73	172.601	0.37
12216.00	89.200	157.590	6069.91	5602.58	-5841.61	782.08	1765376.60	14599666.50	40°11'57.9111"N	80°33'8.9710"W	5893.74	172.374	0.39
12308.00	89.110	157.200	6071.27	5694.44	-5926.54	817.44	1765411.95	14599581.61	40°11'57.0701"N	80°33'8.5208"W	5982.65	172.147	0.44
12400.00	88.920	157.870	6072.85	5786.28	-6011.54	852.59	1765447.08	14599496.64	40°11'56.2284"N	80°33'8.0734"W	6071.70	171.928	0.76
12491.00	89.230	156.030	6074.32	5877.13	-6094.94	888.94	1765483.42	14599413.27	40°11'55.4024"N	80°33'7.6104"W	6159.43	171.702	3.14
12583.00	90.120	157.530	6074.84	5969.19	-6179.16	925.95	1765520.41	14599329.08	40°11'54.5683"N	80°33'7.1390"W	6248.15	171.478	2.88
12675.00	87.780	156.390	6076.52	6061.00	-6263.80	961.94	1765556.39	14599244.47	40°11'53.7301"N	80°33'6.6806"W	6337.24	171.269	2.83
12766.00	90.620	156.050	6077.80	6151.93	-6347.06	998.63	1765593.07	14599161.25	40°11'52.9056"N	80°33'6.2132"W	6425.14	171.059	3.14
12858.00	89.690	158.030	6077.55	6243.82	-6431.77	1034.52	1765628.94	14599076.58	40°11'52.0667"N	80°33'5.7563"W	6514.43	170.863	2.38
12950.00	89.570	156.460	6078.14	6335.69	-6516.60	1070.10	1765664.51	14598991.77	40°11'51.2266"N	80°33'5.3033"W	6603.88	170.675	1.71
13042.00	88.890	155.870	6079.38	6427.63	-6600.75	1107.27	1765701.67	14598907.66	40°11'50.3932"N	80°33'4.8297"W	6692.97	170.477	0.98
13133.00	89.140	152.640	6080.94	6518.61	-6682.89	1146.79	1765741.17	14598825.75	40°11'49.5815"N	80°33'4.3258"W	6780.37	170.263	3.56
13225.00	89.320	153.310	6082.18	6610.58	-6764.64	1188.59	1765782.95	14598743.83	40°11'48.7696"N	80°33'3.7925"W	6868.26	170.034	0.75
13317.00	89.050	154.050	6083.49	6702.56	-6847.09	1229.38	1765823.72	14598661.41	40°11'47.9528"N	80°33'3.2723"W	6956.58	169.821	0.86
13409.00	88.710	152.770	6085.28	6794.53	-6929.34	1270.55	1765864.88	14598579.19	40°11'47.1380"N	80°33'2.7471"W	7044.86	169.610	1.44

REFERENCE WELLPATH IDENTIFICATION			
Operator	SWN PRODUCTION COMPANY, LLC	Well	Worthley BRK 206H
Field	Brooke	API	47009003380000
Facility	Worthley BRK Pad	Wellbore	Worthley BRK 206H AWB
Slot	206H		

WELLPATH DATA (223 stations)													
MD [ft]	Inclination [°]	Azimuth [°]	TVD [ft]	Vert Sect [ft]	North [ft]	East [ft]	Grid East [US ft]	Grid North [US ft]	Latitude	Longitude	Closure Dist [ft]	Closure Dir [°]	DLS [°/100ft]
13500.00	89.540	152.730	6086.67	6885.49	-7010.23	1312.21	1765906.52	14598498.33	40°11'46.3365"N	80°33'2.2155"W	7131.99	169.398	0.91
13592.00	89.080	153.570	6087.78	6977.46	-7092.31	1353.76	1765948.06	14598416.29	40°11'45.5234"N	80°33'1.6855"W	7220.35	169.194	1.04
13684.00	88.550	152.200	6089.69	7069.41	-7174.18	1395.68	1765989.96	14598334.45	40°11'44.7123"N	80°33'1.1506"W	7308.67	168.991	1.60
13775.00	89.420	153.500	6091.30	7160.36	-7255.13	1437.20	1766031.46	14598253.52	40°11'43.9102"N	80°33'0.6209"W	7396.11	168.795	1.72
13867.00	89.080	153.000	6092.50	7252.34	-7337.28	1478.60	1766072.85	14598171.41	40°11'43.0963"N	80°33'0.0927"W	7484.78	168.606	0.66
13959.00	90.250	153.400	6093.04	7344.32	-7419.40	1520.08	1766114.32	14598089.33	40°11'42.2828"N	80°32'59.5635"W	7573.51	168.422	1.34
14051.00	88.770	153.240	6093.83	7436.30	-7501.60	1561.39	1766155.61	14598007.16	40°11'41.4685"N	80°32'59.0366"W	7662.37	168.242	1.62
14142.00	89.660	153.030	6095.07	7527.27	-7582.77	1602.50	1766196.71	14597926.02	40°11'40.6643"N	80°32'58.5121"W	7750.25	168.067	1.00
14234.00	90.090	151.600	6095.27	7619.22	-7664.23	1645.25	1766239.43	14597844.59	40°11'39.8571"N	80°32'57.9666"W	7838.83	167.884	1.62
14326.00	88.250	153.140	6096.61	7711.15	-7745.72	1687.90	1766282.08	14597763.12	40°11'39.0497"N	80°32'57.4222"W	7927.50	167.707	2.61
14418.00	89.230	153.430	6098.63	7803.11	-7827.88	1729.25	1766323.41	14597681.00	40°11'38.2357"N	80°32'56.8948"W	8016.61	167.543	1.11
14509.00	89.050	153.550	6100.00	7894.09	-7909.31	1769.87	1766364.01	14597599.60	40°11'37.4291"N	80°32'56.3768"W	8104.91	167.387	0.24
14601.00	89.290	152.770	6101.33	7986.06	-7991.38	1811.40	1766405.52	14597517.56	40°11'36.6159"N	80°32'55.8470"W	8194.11	167.229	0.89
14692.00	89.350	152.970	6102.41	8077.03	-8072.37	1852.89	1766447.00	14597436.61	40°11'35.8136"N	80°32'55.3176"W	8282.29	167.073	0.23
14784.00	89.020	153.510	6103.72	8169.00	-8154.50	1894.31	1766488.40	14597354.50	40°11'34.9998"N	80°32'54.7892"W	8371.64	166.922	0.69
14876.00	90.220	152.670	6104.33	8260.98	-8236.54	1935.95	1766530.03	14597272.50	40°11'34.1871"N	80°32'54.2581"W	8461.00	166.773	1.59
14967.00	87.600	154.370	6106.06	8351.94	-8317.97	1976.51	1766570.57	14597191.10	40°11'33.3804"N	80°32'53.7407"W	8549.57	166.633	3.43
15059.00	91.660	152.550	6106.65	8443.91	-8400.25	2017.61	1766611.65	14597108.85	40°11'32.5652"N	80°32'53.2166"W	8639.15	166.494	4.84
15150.00	89.140	153.580	6106.02	8534.88	-8481.37	2058.83	1766652.85	14597027.76	40°11'31.7615"N	80°32'52.6908"W	8727.68	166.356	2.99
15242.00	88.400	153.330	6107.99	8626.85	-8563.65	2099.93	1766693.94	14596945.51	40°11'30.9463"N	80°32'52.1665"W	8817.36	166.222	0.85
15333.00	88.280	153.840	6110.63	8717.80	-8645.12	2140.40	1766734.39	14596864.08	40°11'30.1393"N	80°32'51.6505"W	8906.14	166.094	0.58
15425.00	88.460	153.700	6113.24	8809.76	-8727.61	2181.04	1766775.02	14596781.62	40°11'29.3221"N	80°32'51.1321"W	8996.00	165.969	0.25
15517.00	88.310	152.420	6115.84	8901.70	-8809.59	2222.71	1766816.67	14596699.67	40°11'28.5098"N	80°32'50.6007"W	9085.66	165.840	1.40
15608.00	88.490	153.470	6118.38	8992.64	-8890.60	2264.08	1766858.03	14596618.69	40°11'27.7072"N	80°32'50.0729"W	9174.36	165.713	1.17
15700.00	88.950	152.990	6120.43	9084.60	-8972.72	2305.51	1766899.44	14596536.60	40°11'26.8936"N	80°32'49.5444"W	9264.18	165.590	0.72
15792.00	88.920	153.630	6122.14	9176.57	-9054.90	2346.82	1766940.74	14596454.45	40°11'26.0794"N	80°32'49.0175"W	9354.08	165.470	0.70
15884.00	88.610	153.250	6124.13	9268.54	-9137.17	2387.95	1766981.85	14596372.21	40°11'25.2644"N	80°32'48.4930"W	9444.06	165.354	0.53
15975.00	89.260	153.400	6125.82	9359.51	-9218.47	2428.80	1767022.68	14596290.94	40°11'24.4589"N	80°32'47.9720"W	9533.06	165.240	0.73
16067.00	89.510	152.000	6126.81	9451.46	-9300.22	2470.99	1767064.86	14596209.23	40°11'23.6490"N	80°32'47.4337"W	9622.88	165.121	1.55
16158.00	89.020	153.700	6127.97	9542.42	-9381.18	2512.51	1767106.36	14596128.29	40°11'22.8468"N	80°32'46.9041"W	9711.81	165.007	1.94

REFERENCE WELLPATH IDENTIFICATION			
Operator	SWN PRODUCTION COMPANY, LLC	Well	Worthley BRK 206H
Field	Brooke	API	47009003380000
Facility	Worthley BRK Pad	Wellbore	Worthley BRK 206H AWB
Slot	206H		

WELLPATH DATA (223 stations)													
MD [ft]	Inclination [°]	Azimuth [°]	TVD [ft]	Vert Sect [ft]	North [ft]	East [ft]	Grid East [US ft]	Grid North [US ft]	Latitude	Longitude	Closure Dist [ft]	Closure Dir [°]	DLS ["/100ft]
16250.00	89.880	153.150	6128.86	9634.41	-9463.46	2553.66	1767147.50	14596046.05	40°11'22.0317"N	80°32'46.3792"W	9801.95	164.899	1.11
16342.00	89.080	153.650	6129.69	9726.39	-9545.72	2594.85	1767188.68	14595963.82	40°11'21.2168"N	80°32'45.8538"W	9892.12	164.793	1.03
16433.00	89.350	153.820	6130.94	9817.38	-9627.31	2635.12	1767228.93	14595882.26	40°11'20.4084"N	80°32'45.3404"W	9981.43	164.692	0.35
16525.00	89.110	153.470	6132.17	9909.37	-9709.74	2675.96	1767269.75	14595799.86	40°11'19.5918"N	80°32'44.8196"W	10071.74	164.592	0.46
16617.00	89.170	154.250	6133.55	10001.35	-9792.32	2716.49	1767310.26	14595717.31	40°11'18.7737"N	80°32'44.3029"W	10162.13	164.495	0.85
16708.00	88.580	152.960	6135.34	10092.33	-9873.82	2756.93	1767350.69	14595635.85	40°11'17.9663"N	80°32'43.7871"W	10251.49	164.399	1.56
16800.00	88.860	152.750	6137.40	10184.27	-9955.66	2798.90	1767392.64	14595554.03	40°11'17.1554"N	80°32'43.2518"W	10341.62	164.297	0.38
16892.00	88.710	151.490	6139.35	10276.18	-10036.97	2841.91	1767435.63	14595472.76	40°11'16.3498"N	80°32'42.7030"W	10431.54	164.191	1.38
16984.00	88.890	151.440	6141.27	10368.05	-10117.77	2885.84	1767479.56	14595391.99	40°11'15.5491"N	80°32'42.1422"W	10521.28	164.081	0.20
17076.00	88.890	151.890	6143.06	10459.94	-10198.73	2929.50	1767523.20	14595311.06	40°11'14.7468"N	80°32'41.5850"W	10611.13	163.974	0.49
17167.00	88.830	151.500	6144.87	10550.83	-10278.84	2972.64	1767566.32	14595230.98	40°11'13.9530"N	80°32'41.0345"W	10700.05	163.870	0.43
17259.00	88.770	150.870	6146.79	10642.67	-10359.43	3016.97	1767610.63	14595150.42	40°11'13.1544"N	80°32'40.4686"W	10789.80	163.763	0.69
17351.00	89.050	151.550	6148.54	10734.52	-10440.04	3061.27	1767654.92	14595069.84	40°11'12.3555"N	80°32'39.9031"W	10879.61	163.658	0.80
17442.00	88.710	150.630	6150.32	10825.36	-10519.68	3105.26	1767698.88	14594990.23	40°11'11.5663"N	80°32'39.3417"W	10968.43	163.554	1.08
17534.00	88.980	151.440	6152.18	10917.19	-10600.18	3149.80	1767743.41	14594909.78	40°11'10.7688"N	80°32'38.7731"W	11058.24	163.451	0.93
17626.00	88.770	150.550	6153.98	11009.02	-10680.60	3194.40	1767787.99	14594829.37	40°11'9.9716"N	80°32'38.2037"W	11148.07	163.349	0.99
17718.00	88.830	150.910	6155.91	11100.82	-10760.84	3239.37	1767832.95	14594749.17	40°11'9.1764"N	80°32'37.6296"W	11237.85	163.246	0.40
17809.00	88.740	150.940	6157.84	11191.65	-10840.36	3283.58	1767877.14	14594669.68	40°11'8.3884"N	80°32'37.0652"W	11326.75	163.148	0.10
17901.00	89.230	151.790	6159.47	11283.51	-10921.09	3327.67	1767921.21	14594588.98	40°11'7.5884"N	80°32'36.5026"W	11416.81	163.054	1.07
17993.00	89.110	151.800	6160.80	11375.41	-11002.16	3371.14	1767964.67	14594507.94	40°11'6.7851"N	80°32'35.9478"W	11507.04	162.965	0.13
18085.00	89.110	152.480	6162.23	11467.34	-11083.48	3414.13	1768007.64	14594426.65	40°11'5.9792"N	80°32'35.3993"W	11597.41	162.879	0.74
18177.00	89.260	152.750	6163.54	11559.29	-11165.16	3456.44	1768049.93	14594345.00	40°11'5.1699"N	80°32'34.8596"W	11687.94	162.799	0.34
18268.00	88.740	152.450	6165.13	11650.24	-11245.94	3498.31	1768091.79	14594264.25	40°11'4.3695"N	80°32'34.3255"W	11777.50	162.720	0.66
18360.00	88.890	151.920	6167.03	11742.15	-11327.30	3541.23	1768134.69	14594182.93	40°11'3.5634"N	80°32'33.7779"W	11867.94	162.639	0.60
18452.00	88.830	152.100	6168.86	11834.06	-11408.52	3584.40	1768177.85	14594101.74	40°11'2.7586"N	80°32'33.2271"W	11958.35	162.558	0.21
18543.00	88.860	152.370	6170.69	11924.99	-11489.02	3626.79	1768220.21	14594021.26	40°11'1.9609"N	80°32'32.6864"W	12047.87	162.480	0.30
18635.00	88.800	152.500	6172.57	12016.92	-11570.56	3669.35	1768262.76	14593939.75	40°11'1.1530"N	80°32'32.1434"W	12138.46	162.405	0.16
18727.00	88.950	152.440	6174.38	12108.85	-11652.13	3711.87	1768305.26	14593858.22	40°11'0.3448"N	80°32'31.6010"W	12229.07	162.330	0.18
18818.00	89.110	152.600	6175.92	12199.80	-11732.85	3753.85	1768347.23	14593777.53	40°10'59.5450"N	80°32'31.0654"W	12318.73	162.258	0.25
18910.00	88.890	152.570	6177.53	12291.74	-11814.51	3796.20	1768389.57	14593695.90	40°10'58.7359"N	80°32'30.5252"W	12409.42	162.187	0.24

RECEIVED
Office of Oil and Gas
OCT 23 2024
WV Department of Environmental Protection

Actual Wellpath Report
Worthley BRK 206H awp Proj: 19980'
Page 9 of 10

REFERENCE WELLPATH IDENTIFICATION

Operator	SWN PRODUCTION COMPANY, LLC	Well	Worthley BRK 206H
Field	Brooke	API	47009003380000
Facility	Worthley BRK Pad	Wellbore	Worthley BRK 206H AWB
Slot	206H		

WELLPATH DATA (223 stations) † = interpolated, ‡ = extrapolated station

MD [ft]	Inclination [°]	Azimuth [°]	TVD [ft]	Vert Sect [ft]	North [ft]	East [ft]	Grid East [US ft]	Grid North [US ft]	Latitude	Longitude	Closure Dist [ft]	Closure Dir [°]	DLS ["/100ft]
19002.00	88.980	152.860	6179.24	12383.69	-11896.26	3838.37	1768431.72	14593614.18	40°10'57.9259"N	80°32'29.9874"W	12500.16	162.118	0.33
19093.00	88.710	152.420	6181.07	12474.64	-11977.06	3880.18	1768473.51	14593533.41	40°10'57.1253"N	80°32'29.4540"W	12589.91	162.049	0.57
19185.00	88.740	152.980	6183.12	12566.58	-12058.79	3922.37	1768515.68	14593451.71	40°10'56.3155"N	80°32'28.9160"W	12680.67	161.982	0.61
19277.00	88.770	153.100	6185.12	12658.53	-12140.78	3964.07	1768557.37	14593369.76	40°10'55.5032"N	80°32'28.3842"W	12771.54	161.918	0.13
19369.00	88.710	152.820	6187.14	12750.49	-12222.70	4005.88	1768599.16	14593287.87	40°10'54.6915"N	80°32'27.8509"W	12862.41	161.854	0.31
19460.00	88.490	152.990	6189.36	12841.43	-12303.69	4047.32	1768640.58	14593206.91	40°10'53.8891"N	80°32'27.3224"W	12952.28	161.791	0.31
19552.00	88.740	153.060	6191.59	12933.38	-12385.65	4089.04	1768682.29	14593124.98	40°10'53.0769"N	80°32'26.7904"W	13043.19	161.730	0.28
19644.00	88.650	153.010	6193.68	13025.34	-12467.63	4130.74	1768723.98	14593043.03	40°10'52.2647"N	80°32'26.2586"W	13134.11	161.669	0.11
19736.00	88.740	152.910	6195.78	13117.29	-12549.55	4172.56	1768765.77	14592961.14	40°10'51.4530"N	80°32'25.7253"W	13225.03	161.609	0.15
19827.00	88.610	152.410	6197.88	13208.23	-12630.37	4214.34	1768807.54	14592880.36	40°10'50.6523"N	80°32'25.1924"W	13314.91	161.548	0.57
19919.00	88.610	152.130	6200.11	13300.14	-12711.78	4257.14	1768850.32	14592798.98	40°10'49.8456"N	80°32'24.6465"W	13405.69	161.484	0.30
19955.00	88.610	152.310	6200.99	13336.11	-12743.62	4273.91	1768867.09	14592767.15	40°10'49.5301"N	80°32'24.4325"W	13441.21	161.460	0.50
19980.00‡	88.610	152.310	6201.59	13361.09	-12765.75	4285.52	1768878.70	14592745.03	40°10'49.3109"N	80°32'24.2843"W	13465.88	161.443	0.00

HOLE & CASING SECTIONS - Ref Wellbore: Worthley BRK 206H AWB Ref Wellpath: Worthley BRK 206H awp Proj: 19980'

String/Diameter	Start MD [ft]	End MD [ft]	Interval [ft]	Start TVD [ft]	End TVD [ft]	Start N/S [ft]	Start E/W [ft]	End N/S [ft]	End E/W [ft]
13.375in Casing	26.00	600.00	574.00	26.00	600.00	0.00	0.00	0.06	0.84
9.625in Casing	26.00	1732.00	1706.00	26.00	1709.82	0.00	0.00	21.23	-184.06
5.5in Casing	26.00	19980.00	19954.00	26.00	6201.59	0.00	0.00	-12765.75	4285.52

REFERENCE WELLPATH IDENTIFICATION			
Operator	SWN PRODUCTION COMPANY, LLC	Well	Worthley BRK 206H
Field	Brooke	API	47009003380000
Facility	Worthley BRK Pad	Wellbore	Worthley BRK 206H AWB
Slot	206H		

TARGETS								
Name	TVD [ft]	North [ft]	East [ft]	Grid East [US ft]	Grid North [US ft]	Latitude	Longitude	Shape
Worthley BRK 206H LP rev 2	6026.00	-781.49	-1484.27	1763111.12	14604724.68	40°12'48.0264"N	80°33'37.8547"W	point
Worthley BRK 206H wp1	6031.20	-1968.59	-847.20	1763747.95	14603538.04	40°12'36.2644"N	80°33'29.7192"W	point
Worthley BRK 206H wp2	6074.42	-3694.99	-120.20	1764474.67	14601812.30	40°12'19.1685"N	80°33'20.4602"W	point
Worthley BRK 206H wp3	6101.40	-5541.12	639.48	1765234.05	14599966.88	40°12'0.8876"N	80°33'10.7893"W	point
Worthley BRK 206H wp4	6117.09	-6603.26	1105.32	1765699.72	14598905.15	40°11'50.3685"N	80°33'4.8550"W	point
Worthley BRK 206H BHL rev 1	6210.90	-12765.64	4285.73	1768878.90	14592745.14	40°10'49.3119"N	80°32'24.2817"W	point

WELLPATH COMPOSITION - Ref Wellbore: Worthley BRK 206H AWB Ref Wellpath: Worthley BRK 206H awp Proj: 19980'					
Start MD [ft]	End MD [ft]	Positional Uncertainty Model	Log Name/Comment	Wellbore	Survey Date
26.00	596.00	OWSG MWD rev2 + IFR1 + Multi-Station Correction	1 Total MWD 17.5" IFR-MSA 174' - 596'	Worthley BRK 206H AWB	5/21/2024
596.00	1660.00	OWSG MWD rev2 + IFR1 + Multi-Station Correction	2 Total MWD 12.52" IFR-MSA 686' - 1660'	Worthley BRK 206H AWB	5/21/2024
1660.00	5158.00	OWSG MWD rev2 + IFR1 + Multi-Station Correction	3 Total MWD 8.75" IFR-MSA 1750' - 5158'	Worthley BRK 206H AWB	5/21/2024
5158.00	19980.00	OWSG MWD rev2 + IFR1 + Multi-Station Correction	4 BH MWD 8.5" IFR-MSA 5251' - 19955'	Worthley BRK 206H AWB	5/21/2024