



# SWN PRODUCTION COMPANY, LLC



Location: Brooke County, WV  
Field: Brooke  
Facility: Worthley BRK Pad

Slot: 6H  
Well: Worthley BRK 6H  
Wellbore: Worthley BRK 6H AWB

Plot reference wellpath is Worthley BRK 6H awp Proj: 19482'	Grid System: NAD83 / UTM Zone 17 North, US feet
True vertical depths are referenced to SDC 501 (KB)	North Reference: Grid north
Reference wellpath measured depths are referenced to SDC 501 (KB)	Scale: True distance
SDC 501 (KB) to Mean Sea Level: 1183.3 feet	Coordinates are in feet referenced to Slot
Mean Sea Level to Ground level (At Slot: 6H): -1157.3 feet	Depths are in feet
Offset wellpath MDs are referenced to each path's default MD datum	Created by: tranlam on 2024-06-05; Database: WA_MPL_EASTERNUS_Defn

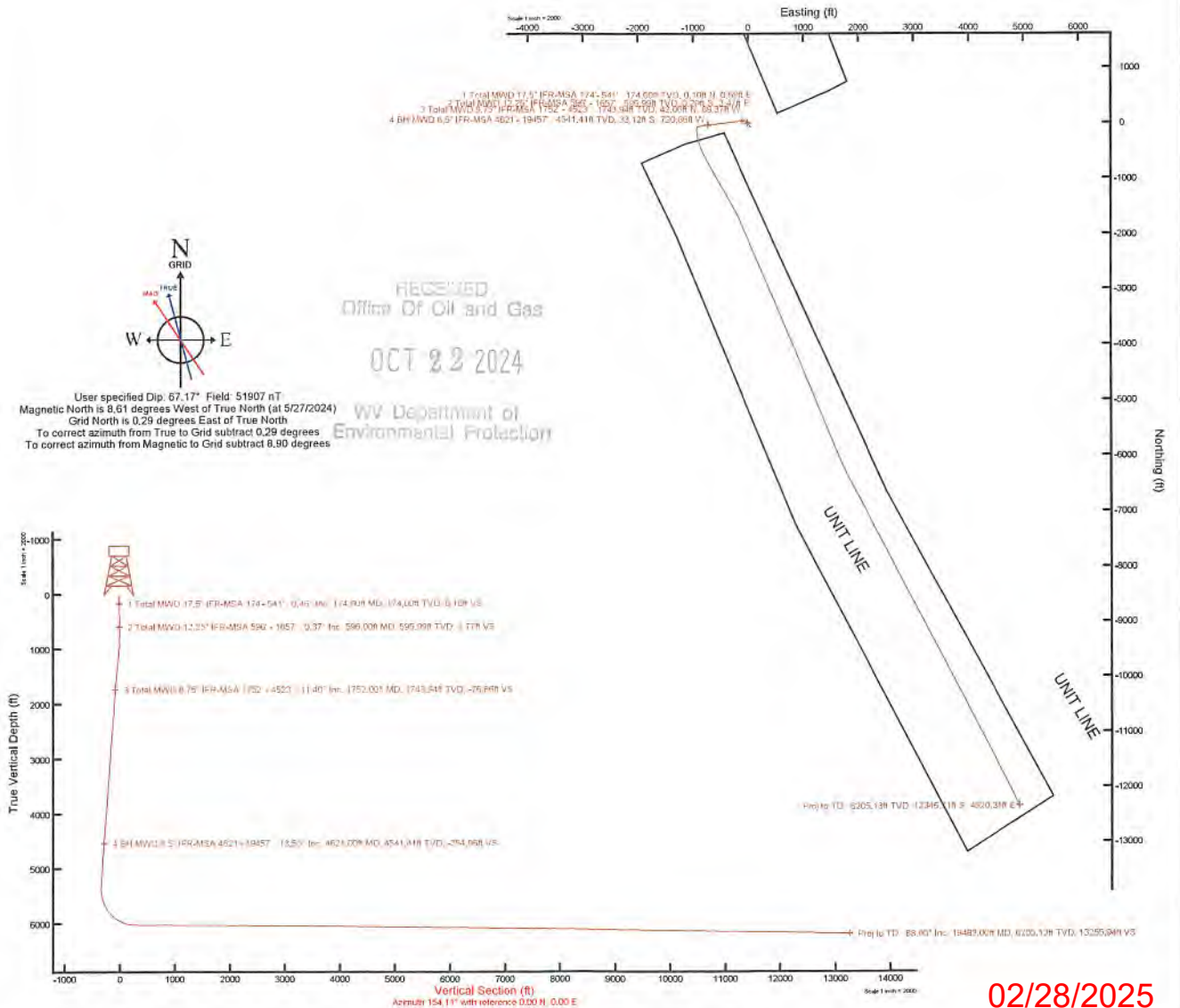
### Location Information

Facility Name			Grid East (US ft)	Grid North (US ft)	Latitude	Longitude
Worthley BRK Pad			1764646.294	14605439.176	40°12'55.0140"N	80°33'18.0130"W
Slot	Local N (ft)	Local E (ft)	Grid East (US ft)	Grid North (US ft)	Latitude	Longitude
6H	56.12	-42.35	1764603.960	14605495.270	40°12'55.5706"N	80°33'18.5553"W
SDC 501 (KB) to Ground level (At Slot: 6H)					26ft	
Mean Sea Level to Ground level (At Slot: 6H)					-1157.3ft	
SDC 501 (KB) to Mean Sea Level					1183.3ft	

### Bottom Hole Location

MD (ft)	Inc (°)	Az (°)	TVD (ft)	Local N (ft)	Local E (ft)	Grid East (US ft)	Grid North (US ft)	Latitude	Longitude
19482.00	88.950	153.300	6205.13	-12346.71	4920.31	1769522.38	14593153.31	40°10'53.3139"N	80°32'15.9609"W

API: 47009003390000  
 BH JOB: 112262722  
 DURATION: 05.31.2024 to 06.04.2024  
 RIG: SDC 501



REFERENCE WELLPATH IDENTIFICATION			
Operator	SWN PRODUCTION COMPANY, LLC	Well	Worthley BRK 6H
Field	Brooke	API	47009003390000
Facility	Worthley BRK Pad	Wellbore	Worthley BRK 6H AWB
Slot	6H		

REPORT SETUP INFORMATION			
Projection System	NAD83 / UTM Zone 17 North, US feet	Software System	WellArchitect® 6.0
North Reference	Grid	User	Tranlam
Scale	0.999618	Report Generated	6/5/2024 at 4:13:35 PM
Convergence at slot	0.29° East	Database	WA_MPL_EASTERNUS_Defn

WELLPATH LOCATION						
	Local coordinates		Grid coordinates		Geographic coordinates	
	North[ft]	East[ft]	Easting[US ft]	Northing[US ft]	Latitude	Longitude
Slot Location	56.12	-42.35	1764603.96	14605495.27	40°12'55.5706"N	80°33'18.5553"W
Facility Reference Pt			1764646.29	14605439.18	40°12'55.0140"N	80°33'18.0130"W
Field Reference Pt			0.00	0.00	0°00'0.0000"	85°29'19.4780"W

WELLPATH DATUM			
Calculation method	Minimum curvature	SDC 501 (KB) to Facility Vertical Datum	1183.30ft
Horizontal Reference Pt	Slot	SDC 501 (KB) to Mean Sea Level	1183.30ft
Vertical Reference Pt	SDC 501 (KB)	SDC 501 (KB) to Ground Level at Slot (6H)	26.00ft
MD Reference Pt	SDC 501 (KB)	Section Origin	N 0.00, E 0.00 ft
Field Vertical Reference	Mean Sea Level	Section Azimuth	154.11°

RECEIVED  
 Office of Oil and Gas  
 OCT 22 2024  
 MW Department of  
 Environmental Protection

REFERENCE WELLPATH IDENTIFICATION			
Operator	SWN PRODUCTION COMPANY, LLC	Well	Worthley BRK 6H
Field	Brooke	API	47009003390000
Facility	Worthley BRK Pad	Wellbore	Worthley BRK 6H AWB
Slot	6H		

WELLPATH DATA (216 stations) † = interpolated, ‡ = extrapolated station													
MD [ft]	Inclination [°]	Azimuth [°]	TVD [ft]	Vert Sect [ft]	North [ft]	East [ft]	Grid East [US ft]	Grid North [US ft]	Latitude	Longitude	Closure Dist [ft]	Closure Dir [°]	DLS [°/100ft]
0.00†	0.000	80.100	0.00	0.00	0.00	0.00	1764603.96	14605495.27	40°12'55.5706"N	80°33'18.5553"W	0.00	0.000	0.00
26.00	0.000	80.100	26.00	0.00	0.00	0.00	1764603.96	14605495.27	40°12'55.5706"N	80°33'18.5553"W	0.00	0.000	0.00
174.00	0.460	80.100	174.00	0.16	0.10	0.59	1764604.55	14605495.37	40°12'55.5716"N	80°33'18.5477"W	0.59	80.100	0.31
234.00	0.370	86.170	234.00	0.30	0.16	1.02	1764604.98	14605495.43	40°12'55.5721"N	80°33'18.5422"W	1.03	81.242	0.17
324.00	0.400	98.560	323.99	0.59	0.13	1.62	1764605.58	14605495.40	40°12'55.5718"N	80°33'18.5344"W	1.62	85.432	0.10
415.00	0.470	100.640	414.99	0.99	0.01	2.30	1764606.26	14605495.28	40°12'55.5706"N	80°33'18.5257"W	2.30	89.677	0.08
506.00	0.430	106.740	505.99	1.44	-0.15	2.99	1764606.95	14605495.12	40°12'55.5689"N	80°33'18.5167"W	3.00	92.953	0.07
541.00	0.250	117.070	540.99	1.59	-0.23	3.18	1764607.14	14605495.04	40°12'55.5682"N	80°33'18.5142"W	3.19	94.075	0.54
596.00	0.370	91.820	595.99	1.77	-0.29	3.47	1764607.43	14605494.98	40°12'55.5676"N	80°33'18.5106"W	3.48	94.731	0.33
689.00	0.520	35.990	688.99	1.71	0.04	4.02	1764607.98	14605495.31	40°12'55.5709"N	80°33'18.5035"W	4.02	89.361	0.47
779.00	0.760	13.420	778.98	1.06	0.96	4.40	1764608.35	14605496.23	40°12'55.5798"N	80°33'18.4985"W	4.50	77.733	0.38
869.00	1.620	350.770	868.96	-0.62	2.79	4.33	1764608.29	14605498.06	40°12'55.5980"N	80°33'18.4993"W	5.15	57.187	1.07
961.00	2.780	335.060	960.89	-4.10	6.10	3.18	1764607.14	14605501.37	40°12'55.6307"N	80°33'18.5139"W	6.88	27.545	1.41
1052.00	4.140	325.480	1051.72	-9.55	10.81	0.39	1764604.35	14605506.07	40°12'55.6774"N	80°33'18.5496"W	10.81	2.061	1.62
1142.00	5.590	320.830	1141.40	-17.03	16.88	-4.22	1764599.74	14605512.15	40°12'55.7377"N	80°33'18.6086"W	17.40	345.962	1.67
1235.00	6.150	312.260	1233.91	-26.06	23.74	-10.77	1764593.19	14605519.00	40°12'55.8058"N	80°33'18.6926"W	26.07	335.603	1.12
1326.00	7.090	301.550	1324.31	-35.32	29.96	-19.16	1764584.80	14605525.22	40°12'55.8676"N	80°33'18.8003"W	35.57	327.397	1.70
1416.00	8.650	293.240	1413.46	-45.12	35.54	-30.12	1764573.86	14605530.79	40°12'55.9233"N	80°33'18.9412"W	46.58	319.721	2.14
1507.00	9.780	285.240	1503.29	-55.38	40.27	-43.86	1764560.11	14605535.52	40°12'55.9707"N	80°33'19.1181"W	59.54	312.555	1.87
1598.00	10.640	275.720	1592.85	-64.87	43.14	-59.68	1764544.30	14605538.39	40°12'55.9999"N	80°33'19.3218"W	73.64	305.861	2.08
1657.00	11.220	268.880	1650.78	-70.13	43.57	-70.84	1764533.15	14605538.82	40°12'56.0047"N	80°33'19.4656"W	83.17	301.594	2.41
1752.00	11.400	261.830	1743.94	-76.86	42.06	-89.37	1764514.62	14605537.31	40°12'55.9906"N	80°33'19.7046"W	98.77	295.200	1.47
1797.00	11.370	258.970	1788.06	-79.35	40.57	-98.13	1764505.87	14605535.83	40°12'55.9764"N	80°33'19.8176"W	106.19	292.464	1.26
1887.00	11.850	264.440	1876.22	-84.84	37.98	-116.04	1764487.97	14605533.24	40°12'55.9517"N	80°33'20.0485"W	122.09	288.125	1.33
1977.00	12.640	265.160	1964.17	-91.58	36.26	-135.05	1764468.97	14605531.51	40°12'55.9356"N	80°33'20.2937"W	139.83	285.028	0.89
2067.00	12.900	260.740	2051.95	-98.00	33.81	-154.77	1764449.25	14605529.07	40°12'55.9124"N	80°33'20.5481"W	158.42	282.322	1.12
2158.00	13.130	261.870	2140.61	-104.06	30.71	-175.03	1764429.00	14605525.97	40°12'55.8828"N	80°33'20.8094"W	177.70	279.952	0.38
2248.00	13.610	260.970	2228.17	-110.25	27.60	-195.61	1764408.43	14605522.86	40°12'55.8531"N	80°33'21.0749"W	197.55	278.033	0.58
2339.00	13.120	264.540	2316.71	-116.96	24.94	-216.46	1764387.58	14605520.20	40°12'55.8278"N	80°33'21.3439"W	217.90	276.573	1.05
2432.00	13.250	266.470	2407.26	-124.69	23.28	-237.61	1764366.44	14605518.54	40°12'55.8124"N	80°33'21.6166"W	238.75	275.596	0.49



Southwestern Energy

REVISION  
02/17/2024  
OCT 23 2024

# Actual Wellpath Report

Worthley BRK 6H awp Proj: 19482'

Page 3 of 10



REFERENCE WELLPATH IDENTIFICATION				
Operator	SWN PRODUCTION COMPANY, LLC		Well	Worthley BRK 6H
Field	Brooke		API	47009003390000
Facility	Worthley BRK Pad		Wellbore	Worthley BRK 6H AWB
Slot	6H			

WELLPATH DATA (216 stations)													
MD (ft)	Inclination (°)	Azimuth (°)	TVD (ft)	Vert Sect (ft)	North (ft)	East (ft)	Grid East (US ft)	Grid North (US ft)	Latitude	Longitude	Closure Dist (ft)	Closure Dir (°)	DLS (°/100ft)
2523.00	13.520	263.200	2495.79	-132.14	21.38	-258.58	1764345.48	14605516.64	40°12'55.7947"N	80°33'21.8870"W	259.46	274.726	0.88
2613.00	13.160	266.990	2583.36	-139.57	19.60	-279.26	1764324.81	14605514.86	40°12'55.7781"N	80°33'22.1537"W	279.94	274.014	1.05
2705.00	12.990	265.840	2672.97	-147.47	18.30	-300.03	1764304.05	14605513.56	40°12'55.7663"N	80°33'22.4215"W	300.59	273.489	0.34
2795.00	13.020	263.120	2760.67	-154.51	16.35	-320.18	1764283.90	14605511.61	40°12'55.7480"N	80°33'22.6814"W	320.60	272.923	0.68
2887.00	12.740	262.850	2850.35	-161.15	13.84	-340.54	1764263.55	14605509.11	40°12'55.7243"N	80°33'22.9439"W	340.82	272.328	0.31
2977.00	12.860	260.550	2938.12	-167.17	10.96	-360.26	1764243.83	14605506.23	40°12'55.6968"N	80°33'23.1984"W	360.43	271.743	0.58
3068.00	12.610	262.360	3026.88	-173.15	7.98	-380.10	1764224.01	14605503.25	40°12'55.6683"N	80°33'23.4543"W	380.18	271.203	0.52
3159.00	12.730	263.450	3115.66	-179.58	5.52	-399.90	1764204.21	14605500.78	40°12'55.6449"N	80°33'23.7097"W	399.94	270.790	0.29
3251.00	12.700	259.240	3205.41	-185.57	2.47	-419.91	1764184.21	14605497.74	40°12'55.6158"N	80°33'23.9678"W	419.92	270.337	1.01
3342.00	12.980	261.760	3294.13	-191.28	-0.86	-439.85	1764164.28	14605494.41	40°12'55.5839"N	80°33'24.2250"W	439.85	269.888	0.69
3432.00	12.970	262.810	3381.83	-197.59	-3.57	-459.88	1764144.26	14605491.70	40°12'55.5580"N	80°33'24.4833"W	459.89	269.555	0.26
3525.00	12.660	264.800	3472.52	-204.53	-5.80	-480.38	1764123.77	14605489.47	40°12'55.5370"N	80°33'24.7478"W	480.41	269.308	0.58
3616.00	12.350	263.300	3561.36	-211.26	-7.84	-499.98	1764104.18	14605487.43	40°12'55.5178"N	80°33'25.0005"W	500.04	269.101	0.49
3706.00	12.740	262.810	3649.21	-217.60	-10.21	-519.38	1764084.78	14605485.07	40°12'55.4954"N	80°33'25.2508"W	519.48	268.874	0.45
3797.00	12.550	261.420	3738.00	-223.76	-12.94	-539.11	1764065.06	14605482.34	40°12'55.4694"N	80°33'25.5053"W	539.27	268.625	0.39
3887.00	12.800	263.450	3825.81	-229.97	-15.53	-558.68	1764045.49	14605479.74	40°12'55.4447"N	80°33'25.7578"W	558.90	268.407	0.57
3978.00	12.800	263.290	3914.55	-236.62	-17.86	-578.71	1764025.47	14605477.41	40°12'55.4227"N	80°33'26.0160"W	578.99	268.232	0.04
4069.00	12.370	264.740	4003.36	-243.37	-19.93	-598.43	1764005.76	14605475.34	40°12'55.4032"N	80°33'26.2703"W	598.76	268.092	0.59
4159.00	13.520	265.660	4091.07	-250.63	-21.61	-618.52	1763985.68	14605473.66	40°12'55.3876"N	80°33'26.5294"W	618.90	267.999	1.30
4250.00	13.730	263.340	4179.51	-258.09	-23.67	-639.85	1763964.35	14605471.61	40°12'55.3683"N	80°33'26.8045"W	640.29	267.881	0.64
4340.00	12.860	265.670	4267.10	-265.29	-25.67	-660.45	1763943.77	14605469.61	40°12'55.3496"N	80°33'27.0701"W	660.95	267.775	1.14
4432.00	12.080	265.970	4356.93	-272.64	-27.12	-680.26	1763923.96	14605468.16	40°12'55.3383"N	80°33'27.3256"W	680.80	267.717	0.85
4523.00	12.290	260.880	4445.88	-278.98	-29.32	-699.32	1763904.91	14605465.96	40°12'55.3154"N	80°33'27.5715"W	699.94	267.599	1.20
4621.00	13.500	259.170	4541.41	-284.96	-33.12	-720.86	1763883.38	14605462.16	40°12'55.2789"N	80°33'27.8493"W	721.62	267.369	1.29
4708.00	12.630	261.480	4626.16	-290.44	-36.44	-740.24	1763864.01	14605458.84	40°12'55.2471"N	80°33'28.0993"W	741.13	267.182	1.17
4799.00	13.410	261.970	4714.82	-296.64	-39.39	-760.53	1763843.73	14605455.90	40°12'55.2190"N	80°33'28.3610"W	761.54	267.035	0.87
4889.00	13.450	262.110	4802.36	-303.08	-42.28	-781.23	1763823.03	14605453.00	40°12'55.1914"N	80°33'28.6281"W	782.37	266.902	0.06
4980.00	12.360	261.590	4891.06	-309.28	-45.16	-801.35	1763802.92	14605450.13	40°12'55.1639"N	80°33'28.8876"W	802.62	266.774	1.20
5070.00	11.560	261.920	4979.10	-314.93	-47.84	-819.80	1763784.47	14605447.45	40°12'55.1384"N	80°33'29.1257"W	821.20	266.661	0.89
5161.00	12.240	262.580	5068.15	-320.77	-50.36	-838.40	1763765.89	14605444.93	40°12'55.1143"N	80°33'29.3655"W	839.91	266.562	0.76

REFERENCE WELLPATH IDENTIFICATION			
Operator	SWN PRODUCTION COMPANY, LLC	Well	Worthley BRK 6H
Field	Brooke	API	47009003390000
Facility	Worthley BRK Pad	Wellbore	Worthley BRK 6H AWB
Slot	6H		

WELLPATH DATA (216 stations)													
MD [ft]	Inclination [°]	Azimuth [°]	TVD [ft]	Vert Sect [ft]	North [ft]	East [ft]	Grid East [US ft]	Grid North [US ft]	Latitude	Longitude	Closure Dist [ft]	Closure Dir [°]	DLS [°/100ft]
5252.00	12.390	262.070	5157.05	-326.84	-52.96	-857.63	1763746.66	14605442.33	40°12'55.0897"N	80°33'29.6136"W	859.26	266.467	0.20
5342.00	12.310	261.950	5244.97	-332.76	-65.63	-876.69	1763727.60	14605439.66	40°12'55.0642"N	80°33'29.8595"W	878.46	266.369	0.09
5434.00	12.510	260.160	5334.82	-338.51	-58.71	-896.22	1763708.08	14605436.58	40°12'55.0347"N	80°33'30.1114"W	898.14	266.252	0.47
5524.00	12.490	228.400	5422.79	-338.57	-66.84	-913.12	1763691.19	14605428.45	40°12'54.9551"N	80°33'30.3298"W	915.57	265.813	7.54
5615.00	15.480	198.510	5511.20	-327.22	-84.92	-924.35	1763679.96	14605410.38	40°12'54.7771"N	80°33'30.4757"W	928.25	264.751	8.47
5705.00	19.410	180.990	5597.10	-305.27	-111.29	-928.43	1763675.89	14605384.02	40°12'54.5167"N	80°33'30.5299"W	935.08	263.165	7.24
5797.00	27.100	175.940	5681.57	-272.13	-147.54	-927.21	1763677.11	14605347.79	40°12'54.1584"N	80°33'30.5165"W	938.87	260.959	8.63
5889.00	34.910	171.730	5760.37	-227.51	-194.57	-921.93	1763682.38	14605300.78	40°12'53.6934"N	80°33'30.4515"W	942.24	258.083	8.81
5980.00	42.740	170.090	5831.21	-172.92	-250.85	-912.86	1763691.46	14605244.52	40°12'53.1369"N	80°33'30.3381"W	946.69	254.635	8.68
6072.00	50.520	165.960	5894.36	-108.05	-316.16	-898.84	1763705.46	14605179.23	40°12'52.4908"N	80°33'30.1617"W	952.83	250.621	9.06
6164.00	59.520	162.090	5947.06	-33.87	-388.49	-877.99	1763726.31	14605106.93	40°12'51.7750"N	80°33'29.8976"W	960.10	246.132	10.37
6255.00	68.380	157.430	5987.00	47.39	-465.05	-849.63	1763754.66	14605030.40	40°12'51.0170"N	80°33'29.5369"W	968.58	241.306	10.77
6347.00	77.100	154.010	6014.28	135.11	-545.02	-813.49	1763790.79	14604950.46	40°12'50.2250"N	80°33'29.0762"W	979.19	236.179	10.12
6439.00	85.400	151.690	6028.26	225.93	-625.84	-772.01	1763832.24	14604869.67	40°12'49.4243"N	80°33'28.5468"W	993.82	230.970	9.36
6531.00	89.570	151.050	6032.30	317.72	-706.50	-727.98	1763876.26	14604789.04	40°12'48.6251"N	80°33'27.9844"W	1014.45	225.858	4.59
6622.00	89.630	151.610	6032.94	408.61	-786.34	-684.33	1763919.90	14604709.23	40°12'47.8340"N	80°33'27.4268"W	1042.42	221.032	0.62
6714.00	89.820	150.990	6033.38	500.50	-867.03	-640.15	1763964.06	14604628.57	40°12'47.0344"N	80°33'26.8626"W	1077.75	216.439	0.70
6805.00	89.720	151.290	6033.74	591.37	-946.73	-596.22	1764007.96	14604548.90	40°12'46.2446"N	80°33'26.3015"W	1118.83	212.202	0.35
6897.00	89.910	150.180	6034.04	683.21	-1026.99	-551.25	1764052.92	14604468.68	40°12'45.4493"N	80°33'25.7270"W	1165.58	208.225	1.22
6989.00	89.630	149.130	6034.41	774.93	-1106.38	-504.77	1764099.38	14604389.31	40°12'44.6625"N	80°33'25.1330"W	1216.09	204.524	1.18
7081.00	89.750	149.000	6034.91	866.57	-1185.29	-457.48	1764146.66	14604310.43	40°12'43.8804"N	80°33'24.5285"W	1270.52	201.105	0.19
7173.00	89.410	150.240	6035.58	958.29	-1264.66	-410.96	1764193.16	14604231.10	40°12'43.0938"N	80°33'23.9340"W	1329.75	198.002	1.40
7264.00	89.510	151.050	6036.44	1049.12	-1343.97	-366.35	1764237.75	14604151.82	40°12'42.3079"N	80°33'23.3641"W	1393.01	195.248	0.90
7356.00	90.590	152.260	6036.36	1141.03	-1424.94	-322.67	1764281.41	14604070.88	40°12'41.5056"N	80°33'22.8063"W	1461.01	192.759	1.76
7448.00	89.660	150.620	6036.16	1232.92	-1505.74	-278.69	1764325.38	14603990.11	40°12'40.7050"N	80°33'22.2447"W	1531.31	190.486	2.05
7540.00	89.380	150.470	6036.93	1324.74	-1585.84	-233.45	1764370.60	14603910.04	40°12'39.9111"N	80°33'21.6667"W	1602.93	188.374	0.35
7632.00	89.350	152.730	6037.95	1416.64	-1666.76	-189.70	1764414.33	14603829.15	40°12'39.1094"N	80°33'21.1080"W	1677.52	186.493	2.46
7723.00	89.260	154.910	6039.05	1507.63	-1748.41	-149.55	1764454.46	14603747.53	40°12'38.3005"N	80°33'20.5959"W	1754.80	184.889	2.40
7815.00	89.200	156.230	6040.29	1599.59	-1832.17	-111.51	1764492.49	14603663.81	40°12'37.4710"N	80°33'20.1109"W	1835.56	183.483	1.44
7907.00	89.260	156.800	6041.52	1691.50	-1916.54	-74.85	1764529.14	14603579.47	40°12'36.6354"N	80°33'19.6438"W	1918.00	182.237	0.62

OCT 29 2024  
 ETV  
 [Handwritten notes and stamps]

# Actual Wellpath Report

Worthley BRK 6H awp Proj: 19482'  
Page 5 of 10

REFERENCE WELLPATH IDENTIFICATION			
Operator	SWN PRODUCTION COMPANY, LLC	Well	Worthley BRK 6H
Field	Brooke	API	47009003390000
Facility	Worthley BRK Pad	Wellbore	Worthley BRK 6H AWB
Slot	6H		

WELLPATH DATA (216 stations)													
MD [ft]	Inclination [°]	Azimuth [°]	TVD [ft]	Vert Sect [ft]	North [ft]	East [ft]	Grid East [US ft]	Grid North [US ft]	Latitude	Longitude	Closure Dist [ft]	Closure Dir [°]	DLS [°/100ft]
7998.00	89.970	156.730	6042.14	1782.40	-2000.16	-38.95	1764565.02	14603495.88	40°12'35.8073"N	80°33'19.1865"W	2000.53	181.116	0.78
8090.00	90.030	156.040	6042.14	1874.33	-2084.45	-2.10	1764801.86	14603411.62	40°12'34.9725"N	80°33'18.7170"W	2084.45	180.058	0.75
8182.00	89.480	157.680	6042.53	1966.22	-2169.05	34.05	1764638.00	14603327.06	40°12'34.1348"N	80°33'18.2565"W	2169.31	179.101	1.88
8273.00	89.660	156.420	6043.21	2057.09	-2252.84	69.54	1764673.47	14603243.30	40°12'33.3050"N	80°33'17.8046"W	2253.91	178.232	1.40
8365.00	89.380	156.900	6043.98	2149.00	-2337.31	105.98	1764709.90	14603158.86	40°12'32.4685"N	80°33'17.3403"W	2339.71	177.404	0.60
8457.00	89.510	156.690	6044.87	2240.89	-2421.86	142.23	1764746.14	14603074.34	40°12'31.6312"N	80°33'16.8785"W	2426.03	176.639	0.27
8548.00	89.350	156.820	6045.78	2331.79	-2505.47	178.15	1764782.04	14602990.76	40°12'30.8032"N	80°33'16.4211"W	2511.79	175.933	0.23
8640.00	89.450	156.940	6046.74	2423.68	-2590.07	214.27	1764818.15	14602906.19	40°12'29.9653"N	80°33'15.9610"W	2598.92	175.271	0.17
8732.00	89.600	156.490	6047.51	2515.58	-2674.58	250.63	1764854.50	14602821.72	40°12'29.1285"N	80°33'15.4977"W	2686.30	174.646	0.52
8823.00	89.510	156.870	6048.21	2606.49	-2758.14	286.66	1764890.51	14602738.19	40°12'28.3009"N	80°33'15.0388"W	2773.00	174.066	0.43
8915.00	90.000	156.880	6048.61	2698.38	-2842.75	322.79	1764926.62	14602653.61	40°12'27.4630"N	80°33'14.5786"W	2861.02	173.522	0.53
9007.00	89.230	156.560	6049.22	2790.28	-2927.26	359.15	1764962.97	14602569.14	40°12'26.6262"N	80°33'14.1155"W	2949.21	173.005	0.91
9098.00	89.750	156.830	6050.03	2881.18	-3010.83	395.15	1764998.96	14602485.60	40°12'25.7985"N	80°33'13.6569"W	3036.65	172.523	0.64
9190.00	89.410	156.640	6050.71	2973.08	-3095.34	431.49	1765035.28	14602401.12	40°12'24.9615"N	80°33'13.1941"W	3125.27	172.064	0.42
9282.00	89.320	156.480	6051.73	3064.99	-3179.75	468.08	1765071.86	14602316.75	40°12'24.1257"N	80°33'12.7279"W	3214.01	171.626	0.20
9374.00	89.480	157.090	6052.69	3156.89	-3264.29	504.34	1765108.11	14602232.23	40°12'23.2884"N	80°33'12.2660"W	3303.02	171.217	0.69
9465.00	89.320	156.780	6053.64	3247.77	-3348.01	539.99	1765143.74	14602148.54	40°12'22.4593"N	80°33'11.8120"W	3391.28	170.838	0.38
9557.00	89.380	156.930	6054.69	3339.66	-3432.60	576.15	1765179.89	14602063.99	40°12'21.6216"N	80°33'11.3514"W	3480.62	170.472	0.18
9649.00	89.510	157.580	6055.58	3431.52	-3517.44	611.72	1765215.44	14601979.18	40°12'20.7814"N	80°33'10.8985"W	3570.24	170.134	0.72
9740.00	89.410	156.990	6056.44	3522.37	-3601.38	646.86	1765250.57	14601895.27	40°12'19.9502"N	80°33'10.4511"W	3659.01	169.817	0.66
9832.00	89.510	157.530	6057.30	3614.23	-3686.23	682.42	1765286.12	14601810.46	40°12'19.1100"N	80°33'9.9983"W	3748.86	169.512	0.60
9924.00	89.290	156.580	6058.27	3706.10	-3770.94	718.28	1765321.97	14601725.78	40°12'18.2711"N	80°33'9.5416"W	3838.74	169.216	1.06
10015.00	89.350	157.020	6059.35	3796.99	-3854.58	754.13	1765357.80	14601642.17	40°12'17.4429"N	80°33'9.0850"W	3927.66	168.930	0.49
10107.00	89.450	156.720	6060.31	3888.88	-3939.18	790.27	1765393.92	14601557.61	40°12'16.6051"N	80°33'8.6248"W	4017.67	168.656	0.34
10199.00	89.320	156.700	6061.30	3980.78	-4023.68	826.64	1765430.28	14601473.14	40°12'15.7682"N	80°33'8.1615"W	4107.71	168.390	0.14
10291.00	89.350	158.190	6062.37	4072.62	-4108.63	861.92	1765465.55	14601388.22	40°12'14.9270"N	80°33'7.7123"W	4198.07	168.152	1.62
10383.00	89.320	158.370	6063.43	4164.37	-4194.09	895.97	1765499.58	14601302.79	40°12'14.0807"N	80°33'7.2791"W	4288.73	167.941	0.20
10474.00	89.260	158.230	6064.56	4255.12	-4278.64	929.61	1765533.21	14601218.28	40°12'13.2436"N	80°33'6.8510"W	4378.46	167.742	0.17
10566.00	89.230	157.790	6065.77	4346.90	-4363.94	964.06	1765567.65	14601133.01	40°12'12.3990"N	80°33'6.4126"W	4469.16	167.543	0.48
10658.00	89.110	157.460	6067.11	4438.71	-4449.00	999.08	1765602.65	14601047.98	40°12'11.5566"N	80°33'5.9668"W	4559.80	167.344	0.38

REFERENCE WELLPATH IDENTIFICATION			
Operator	SWN PRODUCTION COMPANY, LLC	Well	Worthley BRK 6H
Field	Brooke	API	47009003390000
Facility	Worthley BRK Pad	Wellbore	Worthley BRK 6H AWB
Slot	6H		

WELLPATH DATA (216 stations)													
MD [ft]	Inclination [°]	Azimuth [°]	TVD [ft]	Vert Sect [ft]	North [ft]	East [ft]	Grid East [US ft]	Grid North [US ft]	Latitude	Longitude	Closure Dist [ft]	Closure Dir [°]	DLS [°/100ft]
10750.00	89.350	157.710	6068.34	4530.54	-4534.04	1034.15	1765637.72	14600962.97	40°12'10.7145"N	80°33'5.5203"W	4650.49	167.151	0.38
10841.00	89.200	155.780	6069.49	4621.43	-4617.64	1070.08	1765673.63	14600879.41	40°12'9.8866"N	80°33'5.0628"W	4740.01	166.953	2.13
10933.00	89.110	156.250	6070.85	4713.37	-4701.69	1107.47	1765711.01	14600795.39	40°12'9.0542"N	80°33'4.5863"W	4830.36	166.746	0.52
11025.00	89.170	157.690	6072.23	4805.24	-4786.34	1143.46	1765746.98	14600710.77	40°12'8.2159"N	80°33'4.1281"W	4921.03	166.564	1.57
11117.00	89.450	157.980	6073.34	4897.04	-4871.54	1178.16	1765781.67	14600625.61	40°12'7.3723"N	80°33'3.6863"W	5011.98	166.404	0.44
11208.00	89.260	157.270	6074.36	4987.86	-4955.68	1212.80	1765816.30	14600541.50	40°12'6.5390"N	80°33'3.2454"W	5101.93	166.248	0.81
11300.00	89.540	157.990	6075.33	5079.68	-5040.75	1247.81	1765851.29	14600456.46	40°12'5.6966"N	80°33'2.7997"W	5192.90	166.096	0.84
11392.00	89.260	157.530	6076.29	5171.49	-5125.90	1282.63	1765886.10	14600371.34	40°12'4.8534"N	80°33'2.3566"W	5283.94	165.952	0.59
11484.00	89.350	157.460	6077.41	5263.32	-5210.89	1317.84	1765921.30	14600286.38	40°12'4.0118"N	80°33'1.9083"W	5374.95	165.807	0.12
11575.00	89.320	157.820	6078.46	5354.14	-5295.04	1352.46	1765955.90	14600202.26	40°12'3.1785"N	80°33'1.4677"W	5465.04	165.672	0.40
11667.00	89.260	157.210	6079.60	5445.97	-5380.04	1387.64	1765991.07	14600117.30	40°12'2.3368"N	80°33'1.0199"W	5556.11	165.537	0.67
11758.00	89.140	157.340	6080.87	5536.83	-5463.97	1422.79	1766026.21	14600033.40	40°12'1.5057"N	80°33'0.5723"W	5646.17	165.405	0.19
11850.00	89.380	157.810	6082.06	5628.65	-5549.00	1457.89	1766061.29	14599948.40	40°12'0.6636"N	80°33'0.1257"W	5737.32	165.279	0.57
11942.00	89.260	157.560	6083.15	5720.46	-5634.11	1492.82	1766096.20	14599863.33	40°11'59.8209"N	80°32'59.6811"W	5828.52	165.160	0.30
12034.00	89.230	157.730	6084.37	5812.28	-5719.19	1527.80	1766131.18	14599778.28	40°11'58.9784"N	80°32'59.2357"W	5919.74	165.043	0.19
12125.00	89.450	157.580	6085.41	5903.10	-5803.35	1562.40	1766165.76	14599694.15	40°11'58.1450"N	80°32'58.7954"W	6009.99	164.932	0.29
12217.00	89.540	157.320	6086.23	5994.94	-5888.31	1597.68	1766201.02	14599609.22	40°11'57.3037"N	80°32'58.3463"W	6101.21	164.819	0.30
12309.00	89.600	155.810	6086.92	6086.85	-5972.72	1634.27	1766237.60	14599524.85	40°11'56.4677"N	80°32'57.8803"W	6192.27	164.697	1.64
12400.00	89.690	156.000	6087.48	6177.81	-6055.79	1671.42	1766274.73	14599441.81	40°11'55.6450"N	80°32'57.4070"W	6282.21	164.570	0.23
12492.00	89.230	155.430	6088.35	6269.76	-6139.64	1709.25	1766312.55	14599357.99	40°11'54.8145"N	80°32'56.9249"W	6373.12	164.443	0.80
12584.00	89.570	155.520	6089.31	6361.73	-6223.34	1747.44	1766350.73	14599274.33	40°11'53.9855"N	80°32'56.4383"W	6464.01	164.316	0.38
12675.00	89.660	155.220	6089.92	6452.71	-6306.05	1785.36	1766388.63	14599191.64	40°11'53.1662"N	80°32'55.9550"W	6553.92	164.192	0.34
12767.00	89.200	153.030	6090.84	6544.70	-6388.82	1825.51	1766428.76	14599108.90	40°11'52.3462"N	80°32'55.4431"W	6644.51	164.054	2.43
12859.00	89.480	151.290	6091.90	6636.64	-6470.16	1868.47	1766471.71	14599027.59	40°11'51.5403"N	80°32'54.8948"W	6734.55	163.892	1.92
12951.00	89.380	150.930	6092.81	6728.50	-6550.71	1912.91	1766516.14	14598947.08	40°11'50.7421"N	80°32'54.3273"W	6824.30	163.721	0.41
13043.00	89.260	151.040	6093.90	6820.36	-6631.16	1957.53	1766560.74	14598866.66	40°11'49.9449"N	80°32'53.7576"W	6914.06	163.553	0.18
13134.00	89.320	151.460	6095.03	6911.24	-6710.93	2001.30	1766604.49	14598786.92	40°11'49.1543"N	80°32'53.1988"W	7002.99	163.395	0.47
13226.00	89.230	152.090	6096.20	7003.16	-6791.99	2044.80	1766647.98	14598705.89	40°11'48.3512"N	80°32'52.6435"W	7093.12	163.245	0.69
13318.00	89.200	151.340	6097.46	7095.07	-6873.00	2088.40	1766691.55	14598624.92	40°11'47.5485"N	80°32'52.0871"W	7183.28	163.098	0.82
13409.00	88.980	153.540	6098.90	7186.01	-6953.65	2130.49	1766733.63	14598544.29	40°11'46.7493"N	80°32'51.5499"W	7272.71	162.966	2.43

REFERENCE WELLPATH IDENTIFICATION				
Operator	SWN PRODUCTION COMPANY, LLC		Well	Worthley BRK 6H
Field	Brooke		API	47009003390000
Facility	Worthley BRK Pad		Wellbore	Worthley BRK 6H AWB
Slot	6H			

WELLPATH DATA (216 stations)													
MD [ft]	Inclination [°]	Azimuth [°]	TVD [ft]	Vert Sect [ft]	North [ft]	East [ft]	Grid East [US ft]	Grid North [US ft]	Latitude	Longitude	Closure Dist [ft]	Closure Dir [°]	DLS [°/100ft]
13501.00	89.080	152.740	6100.46	7277.98	-7035.72	2172.05	1766775.18	14598462.26	40°11'45.9363"N	80°32'51.0197"W	7363.36	162.844	0.88
13593.00	89.170	152.860	6101.86	7369.95	-7117.53	2214.10	1766817.21	14598380.47	40°11'45.1257"N	80°32'50.4833"W	7453.96	162.720	0.16
13684.00	89.230	152.910	6103.13	7460.92	-7198.52	2255.57	1766858.66	14598299.51	40°11'44.3232"N	80°32'49.9542"W	7543.63	162.602	0.09
13776.00	89.260	152.660	6104.35	7552.89	-7280.33	2297.64	1766900.72	14598217.74	40°11'43.5127"N	80°32'49.4174"W	7634.29	162.485	0.27
13868.00	88.610	151.300	6106.06	7644.80	-7361.53	2340.85	1766943.91	14598136.57	40°11'42.7081"N	80°32'48.8659"W	7724.75	162.360	1.64
13959.00	88.580	151.640	6108.29	7735.68	-7441.46	2384.30	1766987.35	14598056.67	40°11'41.9161"N	80°32'48.3113"W	7814.10	162.234	0.37
14051.00	88.950	152.950	6110.27	7827.61	-7522.89	2427.06	1767030.09	14597975.27	40°11'41.1093"N	80°32'47.7656"W	7904.71	162.119	1.48
14143.00	88.770	152.150	6112.10	7919.56	-7604.51	2469.47	1767072.48	14597893.68	40°11'40.3005"N	80°32'47.2246"W	7995.43	162.009	0.89
14235.00	88.550	152.160	6114.25	8011.48	-7685.84	2512.43	1767115.42	14597812.39	40°11'39.4947"N	80°32'46.6764"W	8086.06	161.898	0.24
14326.00	88.770	152.580	6116.38	8102.41	-7766.44	2554.62	1767157.59	14597731.82	40°11'38.6961"N	80°32'46.1380"W	8175.80	161.792	0.52
14418.00	89.110	153.760	6118.08	8194.38	-7848.52	2596.13	1767199.09	14597649.77	40°11'37.8829"N	80°32'45.6084"W	8266.75	161.697	1.33
14510.00	89.260	153.810	6119.39	8286.37	-7931.05	2636.77	1767239.71	14597567.27	40°11'37.0653"N	80°32'45.0903"W	8357.87	161.610	0.17
14602.00	89.320	152.820	6120.53	8378.35	-8013.24	2678.08	1767281.01	14597485.11	40°11'36.2510"N	80°32'44.5633"W	8448.91	161.520	1.08
14693.00	89.110	152.420	6121.78	8469.31	-8094.04	2719.93	1767322.84	14597404.34	40°11'35.4504"N	80°32'44.0294"W	8538.82	161.426	0.50
14785.00	89.260	152.250	6123.09	8561.26	-8175.51	2762.64	1767365.54	14597322.90	40°11'34.6432"N	80°32'43.4844"W	8629.67	161.329	0.25
14877.00	88.980	152.490	6124.50	8653.21	-8257.01	2805.30	1767408.18	14597241.43	40°11'33.8356"N	80°32'42.9401"W	8720.55	161.235	0.40
14968.00	89.080	152.550	6126.04	8744.16	-8337.73	2847.28	1767450.15	14597160.74	40°11'33.0358"N	80°32'42.4044"W	8810.50	161.145	0.13
15059.00	88.950	152.200	6127.60	8835.10	-8418.35	2889.47	1767492.32	14597080.16	40°11'32.2371"N	80°32'41.8661"W	8900.43	161.056	0.41
15151.00	90.120	153.570	6128.35	8927.08	-8500.23	2931.40	1767534.23	14596998.31	40°11'31.4258"N	80°32'41.3312"W	8991.50	160.973	1.96
15242.00	89.350	152.540	6128.77	9018.06	-8581.35	2972.63	1767575.45	14596917.22	40°11'30.6221"N	80°32'40.8053"W	9081.64	160.894	1.41
15334.00	89.230	152.470	6129.91	9110.02	-8662.95	3015.10	1767617.91	14596835.65	40°11'29.8136"N	80°32'40.2634"W	9172.65	160.810	0.15
15426.00	88.890	152.510	6131.42	9201.97	-8744.54	3057.59	1767660.38	14596754.09	40°11'29.0052"N	80°32'39.7213"W	9263.68	160.727	0.37
15517.00	88.950	152.560	6133.14	9292.92	-8825.27	3099.56	1767702.32	14596673.39	40°11'28.2053"N	80°32'39.1859"W	9353.75	160.648	0.09
15609.00	89.040	152.620	6134.75	9384.87	-8906.93	3141.90	1767744.65	14596591.77	40°11'27.3962"N	80°32'38.6457"W	9444.83	160.570	0.12
15701.00	89.170	152.700	6136.19	9476.83	-8988.64	3184.15	1767786.89	14596510.09	40°11'26.5866"N	80°32'38.1067"W	9535.96	160.494	0.17
15792.00	89.140	152.410	6137.53	9567.78	-9069.39	3226.09	1767828.81	14596429.37	40°11'25.7865"N	80°32'37.5717"W	9626.08	160.419	0.32
15884.00	88.980	152.420	6139.04	9659.73	-9150.92	3268.68	1767871.39	14596347.87	40°11'24.9787"N	80°32'37.0282"W	9717.18	160.343	0.17
15976.00	89.010	152.500	6140.65	9751.68	-9232.48	3311.21	1767913.90	14596266.34	40°11'24.1705"N	80°32'36.4856"W	9808.31	160.270	0.09
16067.00	89.010	152.410	6142.22	9842.63	-9313.16	3353.29	1767955.96	14596185.69	40°11'23.3712"N	80°32'35.9488"W	9898.46	160.198	0.10
16159.00	89.080	152.250	6143.76	9934.57	-9394.62	3396.01	1767998.66	14596104.26	40°11'22.5640"N	80°32'35.4038"W	9989.58	160.126	0.19



REFERENCE WELLPATH IDENTIFICATION			
Operator	SWN PRODUCTION COMPANY, LLC	Well	Worthley BRK 6H
Field	Brooke	API	47009003390000
Facility	Worthley BRK Pad	Wellbore	Worthley BRK 6H AWB
Slot	6H		

WELLPATH DATA (216 stations)													
MD [ft]	Inclination [°]	Azimuth [°]	TVD [ft]	Vert Sect [ft]	North [ft]	East [ft]	Grid East [US ft]	Grid North [US ft]	Latitude	Longitude	Closure Dist [ft]	Closure Dir [°]	DLS ["/100ft]
16251.00	89.010	152.270	6145.29	10026.51	-9476.04	3438.82	1768041.46	14596022.87	40°11'21.7573"N	80°32'34.8575"W	10080.71	160.054	0.08
16342.00	89.010	152.500	6146.86	10117.46	-9556.66	3481.00	1768083.62	14595942.28	40°11'20.9584"N	80°32'34.3194"W	10170.89	159.986	0.25
16434.00	89.140	152.300	6148.35	10209.40	-9638.18	3523.62	1768126.22	14595860.80	40°11'20.1507"N	80°32'33.7757"W	10262.08	159.918	0.26
16526.00	89.080	152.560	6149.78	10301.35	-9719.72	3566.19	1768168.78	14595779.28	40°11'19.3427"N	80°32'33.2325"W	10353.30	159.852	0.29
16618.00	89.040	152.750	6151.29	10393.31	-9801.43	3608.45	1768211.02	14595697.61	40°11'18.5331"N	80°32'32.6935"W	10444.56	159.789	0.21
16709.00	89.230	152.660	6152.66	10484.27	-9882.29	3650.17	1768252.73	14595616.78	40°11'17.7320"N	80°32'32.1612"W	10534.87	159.726	0.23
16801.00	88.770	152.720	6154.27	10576.23	-9964.02	3692.37	1768294.92	14595535.08	40°11'16.9222"N	80°32'31.6229"W	10626.16	159.667	0.50
16893.00	89.170	152.250	6155.92	10668.18	-10045.60	3734.87	1768337.39	14595453.53	40°11'16.1138"N	80°32'31.0808"W	10717.43	159.605	0.67
16985.00	89.200	153.220	6157.23	10760.14	-10127.37	3777.01	1768379.52	14595371.79	40°11'15.3037"N	80°32'30.5432"W	10808.77	159.547	1.05
17076.00	88.890	152.920	6158.75	10851.11	-10208.49	3818.22	1768420.71	14595290.70	40°11'14.4999"N	80°32'30.0177"W	10899.18	159.493	0.47
17168.00	88.770	152.560	6160.62	10943.07	-10290.26	3860.35	1768462.83	14595208.97	40°11'13.6898"N	80°32'29.4803"W	10990.53	159.437	0.41
17260.00	89.110	152.790	6162.33	11035.02	-10371.98	3902.57	1768505.03	14595127.28	40°11'12.8801"N	80°32'28.9417"W	11081.88	159.381	0.45
17351.00	89.140	153.240	6163.72	11125.99	-10453.06	3943.86	1768546.30	14595046.23	40°11'12.0767"N	80°32'28.4151"W	11172.31	159.329	0.50
17443.00	89.320	152.860	6164.95	11217.97	-10535.06	3985.55	1768587.98	14594964.26	40°11'11.2643"N	80°32'27.8834"W	11263.75	159.278	0.46
17535.00	88.640	152.230	6166.59	11309.92	-10616.69	4027.96	1768630.37	14594882.66	40°11'10.4555"N	80°32'27.3424"W	11355.11	159.223	1.01
17626.00	88.680	152.590	6168.72	11400.86	-10697.32	4070.10	1768672.49	14594802.07	40°11'9.6566"N	80°32'26.8049"W	11445.45	159.169	0.40
17718.00	89.260	153.120	6170.37	11492.82	-10779.17	4112.06	1768714.44	14594720.24	40°11'8.8456"N	80°32'26.2696"W	11536.88	159.119	0.85
17810.00	89.010	152.310	6171.76	11584.78	-10860.92	4154.23	1768756.60	14594638.52	40°11'8.0355"N	80°32'25.7317"W	11628.30	159.068	0.92
17902.00	88.950	152.690	6173.40	11676.73	-10942.51	4196.71	1768799.05	14594556.96	40°11'7.2271"N	80°32'25.1899"W	11719.68	159.017	0.42
17994.00	88.890	152.540	6175.13	11768.68	-11024.19	4239.02	1768841.35	14594475.32	40°11'6.4178"N	80°32'24.6502"W	11811.10	158.967	0.18
18085.00	88.920	152.760	6176.87	11859.63	-11105.00	4280.82	1768883.13	14594394.54	40°11'5.6171"N	80°32'24.1171"W	11901.53	158.919	0.24
18177.00	88.770	152.670	6178.73	11951.59	-11186.75	4322.98	1768925.28	14594312.82	40°11'4.8071"N	80°32'23.5792"W	11992.98	158.872	0.19
18269.00	88.800	152.710	6180.68	12043.54	-11268.48	4365.18	1768967.46	14594231.12	40°11'3.9974"N	80°32'23.0410"W	12084.43	158.825	0.05
18360.00	88.800	152.400	6182.58	12134.49	-11349.22	4407.11	1769009.38	14594150.41	40°11'3.1973"N	80°32'22.5061"W	12174.87	158.778	0.34
18452.00	88.920	152.800	6184.41	12226.44	-11430.88	4449.44	1769051.69	14594068.78	40°11'2.3882"N	80°32'21.9662"W	12266.32	158.732	0.45
18544.00	88.770	152.590	6186.27	12318.39	-11512.61	4491.64	1769093.87	14593987.08	40°11'1.5784"N	80°32'21.4280"W	12357.79	158.687	0.28
18636.00	88.740	152.460	6188.27	12410.33	-11594.22	4534.07	1769136.29	14593905.51	40°11'0.7698"N	80°32'20.8867"W	12449.24	158.641	0.14
18727.00	88.830	152.600	6190.20	12501.28	-11674.94	4576.04	1769178.24	14593824.82	40°10'59.9699"N	80°32'20.3514"W	12539.71	158.597	0.18
18819.00	88.800	152.740	6192.10	12593.23	-11756.65	4618.27	1769220.46	14593743.14	40°10'59.1603"N	80°32'19.8128"W	12631.20	158.554	0.16
18911.00	88.710	152.830	6194.10	12685.18	-11838.45	4660.33	1769262.50	14593661.37	40°10'58.3498"N	80°32'19.2763"W	12722.72	158.512	0.14



RECEIVED  
Office Of Oil and Gas  
OCT 22 2024  
WV Department of  
Environmental Protection

# Actual Wellpath Report

Worthley BRK 6H awp Proj: 19482'  
Page 9 of 10



## REFERENCE WELLPATH IDENTIFICATION

Operator	SWN PRODUCTION COMPANY, LLC	Well	Worthley BRK 6H
Field	Brooke	API	47009003390000
Facility	Worthley BRK Pad	Wellbore	Worthley BRK 6H AWB
Slot	6H		

## WELLPATH DATA (216 stations) † = interpolated, ‡ = extrapolated station

MD [ft]	Inclination [°]	Azimuth [°]	TVD [ft]	Vert Sect [ft]	North [ft]	East [ft]	Grid East [US ft]	Grid North [US ft]	Latitude	Longitude	Closure Dist [ft]	Closure Dir [°]	DLS [°/100ft]
19002.00	88.770	152.420	6196.10	12776.13	-11919.24	4702.17	1769304.32	14593580.61	40°10'57.5493"N	80°32'18.7428"W	12813.22	158.471	0.46
19094.00	88.950	153.140	6197.93	12868.08	-12001.03	4744.24	1769346.38	14593498.85	40°10'56.7389"N	80°32'18.2062"W	12904.75	158.430	0.81
19278.00	89.010	152.980	6201.20	13052.02	-12165.04	4827.59	1769429.69	14593334.91	40°10'55.1139"N	80°32'17.1433"W	13087.93	158.355	0.09
19369.00	88.800	152.690	6202.94	13142.99	-12245.99	4869.13	1769471.22	14593253.99	40°10'54.3119"N	80°32'16.6136"W	13178.49	158.317	0.39
19457.00	88.950	153.300	6204.67	13230.95	-12324.38	4909.08	1769511.15	14593175.63	40°10'53.5352"N	80°32'16.1041"W	13266.10	158.281	0.71
19482.00‡	88.950	153.300	6205.13	13255.94	-12346.71	4920.31	1769522.38	14593153.31	40°10'53.3139"N	80°32'15.9609"W	13291.00	158.272	0.00

## HOLE & CASING SECTIONS - Ref Wellbore: Worthley BRK 6H AWB Ref Wellpath: Worthley BRK 6H awp Proj: 19482'

String/Diameter	Start MD [ft]	End MD [ft]	Interval [ft]	Start TVD [ft]	End TVD [ft]	Start N/S [ft]	Start E/W [ft]	End N/S [ft]	End E/W [ft]
13.375in Casing	26.00	598.00	572.00	26.00	597.99	0.00	0.00	-0.29	3.48
9.625in Casing	26.00	1729.00	1703.00	26.00	1721.40	0.00	0.00	42.63	-84.88

REFERENCE WELLPATH IDENTIFICATION			
Operator	SWN PRODUCTION COMPANY, LLC	Well	Worthley BRK 6H
Field	Brooke	API	47009003390000
Facility	Worthley BRK Pad	Wellbore	Worthley BRK 6H AWB
Slot	6H		

TARGETS								
Name	TVD [ft]	North [ft]	East [ft]	Grid East [US ft]	Grid North [US ft]	Latitude	Longitude	Shape
Worthley BRK 6H LP rev 1	6031.00	-680.29	-727.06	1763877.18	14604815.24	40°12'48.8840"N	80°33'27.9708"W	point
Worthley BRK 6H wp1	6047.33	-1685.57	-181.04	1764422.99	14603810.35	40°12'38.9231"N	80°33'20.9976"W	point
Worthley BRK 6H wp2	6074.08	-3414.55	549.03	1765152.78	14602082.03	40°12'21.8013"N	80°33'11.6998"W	point
Worthley BRK 6H wp3	6102.28	-5242.83	1299.76	1765903.22	14600254.46	40°12'3.6972"N	80°33'2.1435"W	point
Worthley BRK 6H wp4	6118.32	-6270.73	1752.66	1766355.95	14599226.95	40°11'53.5169"N	80°32'56.3741"W	point
Worthley BRK 6H BHL rev 5	6216.00	-12342.00	4930.70	1769532.76	14593158.01	40°10'53.3599"N	80°32'15.8268"W	point

WELLPATH COMPOSITION - Ref Wellbore: Worthley BRK 6H AWB    Ref Wellpath: Worthley BRK 6H awp Proj: 19482'					
Start MD [ft]	End MD [ft]	Positional Uncertainty Model	Log Name/Comment	Wellbore	Survey Date
26.00	541.00	OWSG MWD rev2 + IFR1 + Multi-Station Correction	1 Total MWD 17.5" IFR-MSA 174' - 541'	Worthley BRK 6H AWB	5/31/2024
541.00	1657.00	OWSG MWD rev2 + IFR1 + Multi-Station Correction	2 Total MWD 12.25" IFR-MSA 596' - 1657'	Worthley BRK 6H AWB	5/31/2024
1657.00	4523.00	OWSG MWD rev2 + IFR1 + Multi-Station Correction	3 Total MWD 8.75" IFR-MSA 1752' - 4523'	Worthley BRK 6H AWB	5/31/2024
4523.00	19482.00	OWSG MWD rev2 + IFR1 + Multi-Station Correction	4 BH MWD 8.5" IFR-MSA 4621' - 19457'	Worthley BRK 6H AWB	5/31/2024

RECEIVED  
Office Of Oil and Gas  
OCT 22 2024  
WV Department of  
Environmental Protection