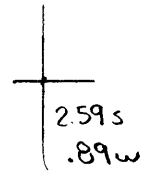


40°22'30"

Latitude

80°35'00"

Longitude



Topo Location

7.5' Loc. _____ 15' Loc. _____
 _____ (calc.) _____

Company Wheeling Steel Corp

Farm Wheeling Steel Corp #7

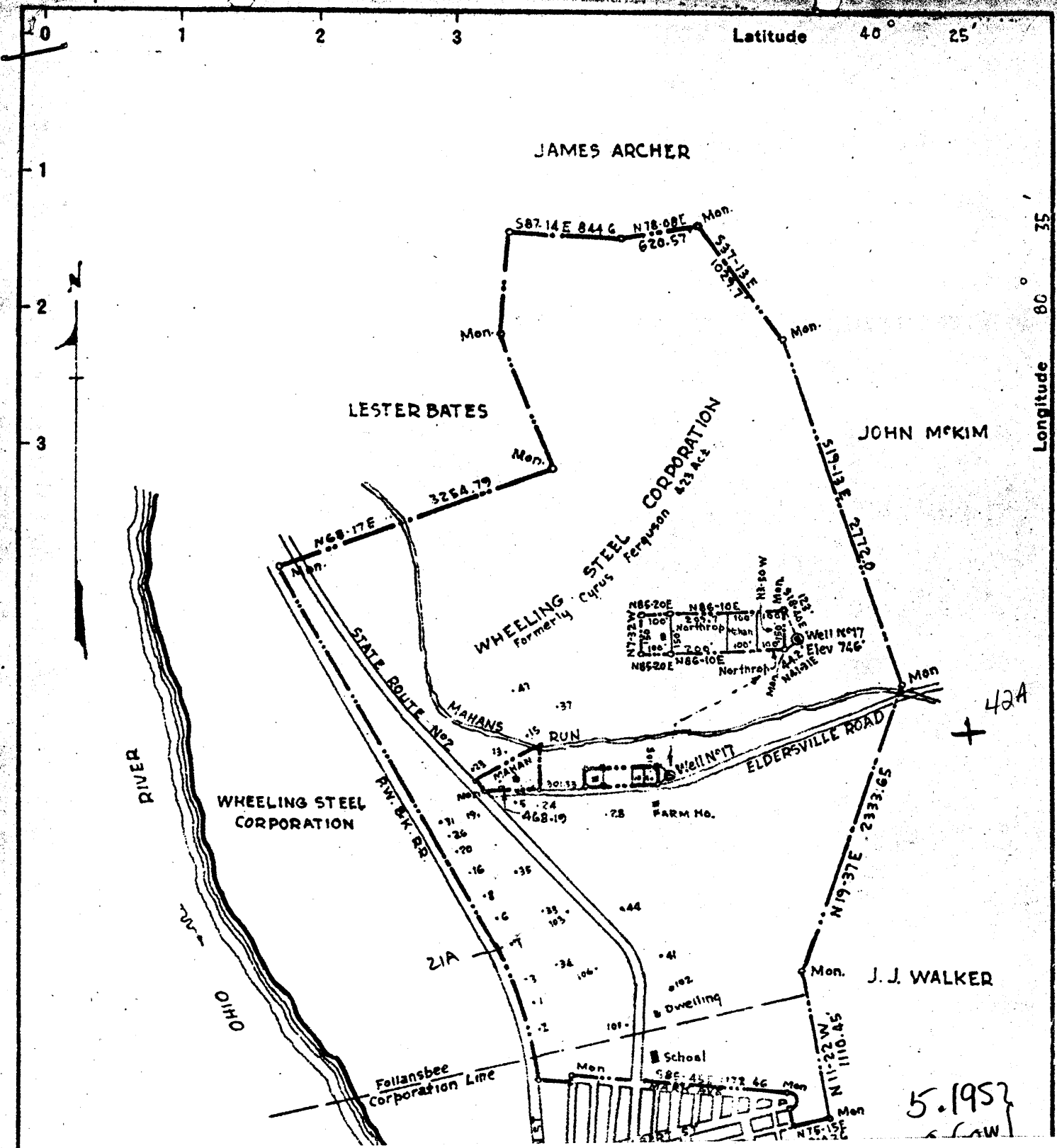
15' Quad _____
(sec.)

7.5' Quad Steubenville East

District Cross Creek

WELL LOCATION PLAT

County 009 **Permit** 30021



Wheeling Steel # 7

009-21A

(from plat for 42A)

Cross Creek District, Brooke County, W.Va.
 By Wheeling Steel Corporation, Wheeling, W.Va.
 On 585 acres, along State Highway No. 2 and Ohio River;
 surface and minerals owned by Wheeling Steel Corp.,
 Wheeling, W. Va.

Elevation, 682.60' L.

12½" steel pipe, 60'; 10" casing, 200'; 8¼", 630'; 6⅝", 930'.

Wall packer, 6⅝", bottom of 6⅝" pipe.

Casing not perforated. No liner used.

Coal was encountered at 214.10 (42") and 254.10 (60").

Abandonment reported to Dept. of Mines Oct. 17, 1936.

No record of shot. No record of water.

Oil well. Record to RCT from D.G. Courtney (Dept. of Mines) 5-5-37.

This well was drilled about thirty (30) years ago and no log or drilling record is available. The following information has been secured from sources, considered reliable:

Depth of hole is 1275 ft.; casing used as per data sheet no. 1; three oil sands penetrated, viz, Salt, Big Injun, and Berea. Oil is found in Berea. Salt Sand is about 50 ft. in thickness; Big Injun about 300 ft. and Berea averages 25 ft. Berea Sand light brown, soft, and friable - other sands are darker in color and harder.

Upper and Lower Freeport Coal measures are penetrated at depth points from surface of about 214 ft. and 254 ft., respectively. This coal is not being mined.

Field is pressured with air - 35# to 40# and producing wells are vacuum pumped with gauge registering about 25 in.

Cross Creek District, Brooke County, W.Va.
By Wheeling Steel Corporation, Wheeling, W.Va.
On 585 acres, along State Highway No. 2 and Ohio River;
surface and minerals owned by Wheeling Steel Corp.,
Wheeling, W. Va.
Elevation, 682.60' L.
12½" steel pipe, 60'; 10" casing, 200'; 8¼", 630'; 6⅝", 930'.
Wall packer, 6⅝", bottom of 6⅝" pipe.
Casing not perforated. No liner used.
Coal was encountered at 214.10 (42") and 254.10 (60").
Abandonment reported to Dept. of Mines Oct. 17, 1936.
No record of shot. No record of water.
Oil well. Record to RCT from D.G.Courtney (Dept. of Mines) 5-5-37.

This well was drilled about thirty (30) years ago and no log or drilling record is available. The following information has been secured from sources, considered reliable:

Depth of hole is 1275 ft.; casing used as per data sheet no. 1; three oil sands penetrated, viz, Salt, Big Injun, and Berea. Oil is found in Berea. Salt Sand is about 50 ft. in thickness; Big Injun about 300 ft. and Berea averages 25 ft. Berea Sand light brown, soft, and friable - other sands are darker in color and harder.

Upper and Lower Freeport Coal measures are penetrated at depth points from surface of about 214 ft. and 254 ft., respectively. This coal is not being mined.

Field is pressured with air - 35# to 40# and producing wells are vacuum pumped with gauge registering about 25 in.