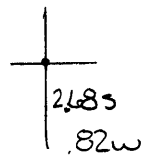


40°22'30"

Latitude

80°35'00"

Longitude



Topo Location

7.5' Loc. _____ 15' Loc. _____
 _____ (calc.) _____

Company Wheeling Steel Corp

Farm Wheeling Steel Corp #3

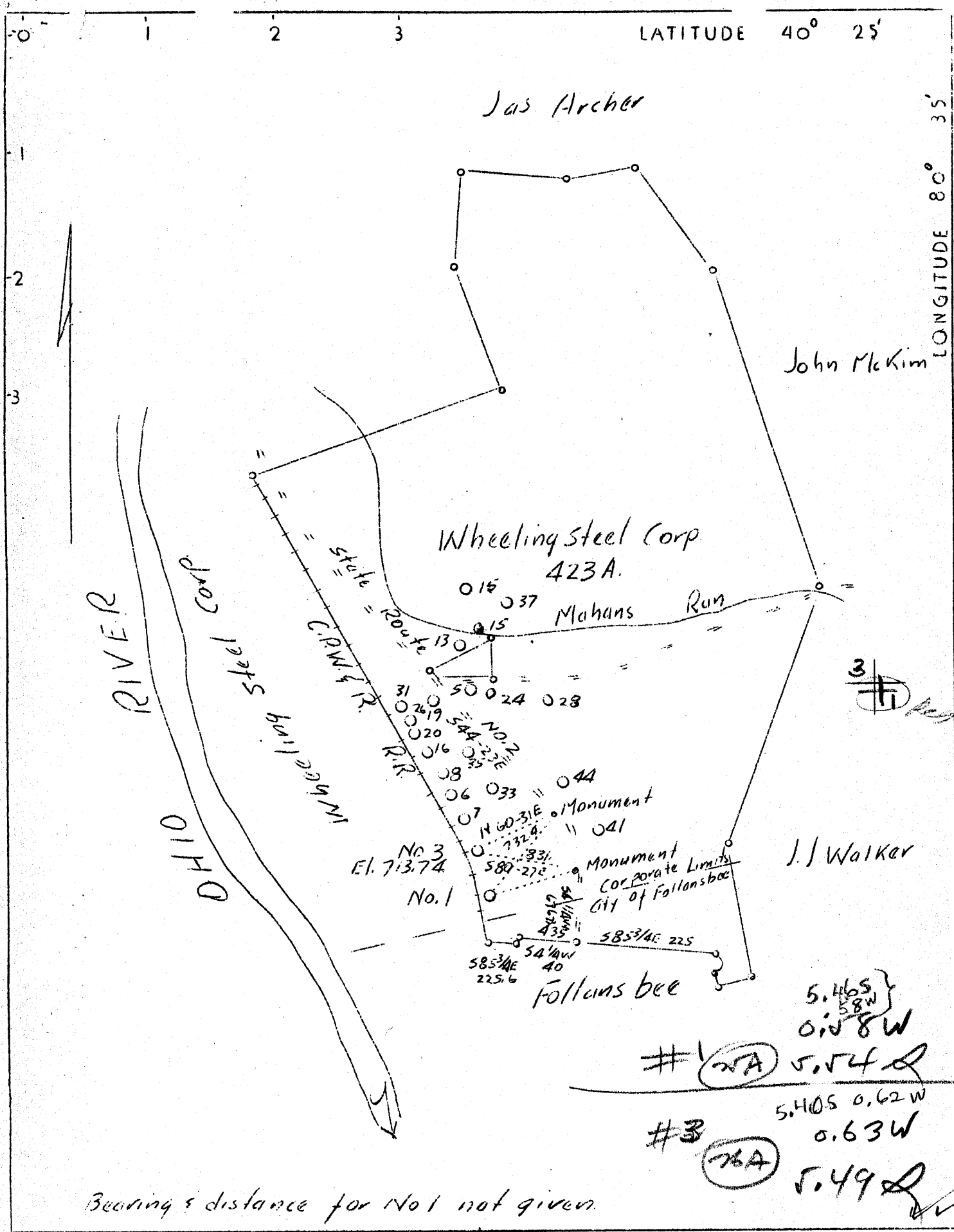
15' Quad _____
(sec.)

7.5' Quad Steubenville East

District Cross Creek

WELL LOCATION PLAT

County 009 **Permit** 30026



Company	Wheeling Steel Corp.
Address (General Office)	Wheeling, W.Va.
Farm	Wheeling Steel Corp. (Formerly Cyrus Ferguson)
Tract	Acres 423 Lease No.
Well (Farm) No.	1 & 3 Serial No.
Quadrangle	Steubenville
County	Brooke
District	Cross Cr.
Engineer	Eugene M. Smith - C.C. Smiths Sons
Engineer's Registration No.	390
File No.	Drawing No.
Date	Not given
Scale	1" = 1000'

NOV 1, 1937

STATE OF WEST VIRGINIA
 Department of Mines
 OIL AND GAS DIVISION
 CHARLESTON

WELL LOCATION MAP

File No. BRO-25A & 26A

+ Denotes location of well on United States Topographic Maps, scale 1 to 62,500, latitude and longitude lines being represented by border lines as shown.

- Denotes one inch spaces on border line of original tracing.