

40°25'00"

Latitude

80°35'00"

Longitude

2825  
31w

**Topo Location**

7.5' Loc. \_\_\_\_\_ 15' Loc. \_\_\_\_\_  
 \_\_\_\_\_ (cale.) \_\_\_\_\_

Company McKum Oil Co

Farm ET & ME Woods

15' Quad \_\_\_\_\_  
(sec.)

7.5' Quad Wenton

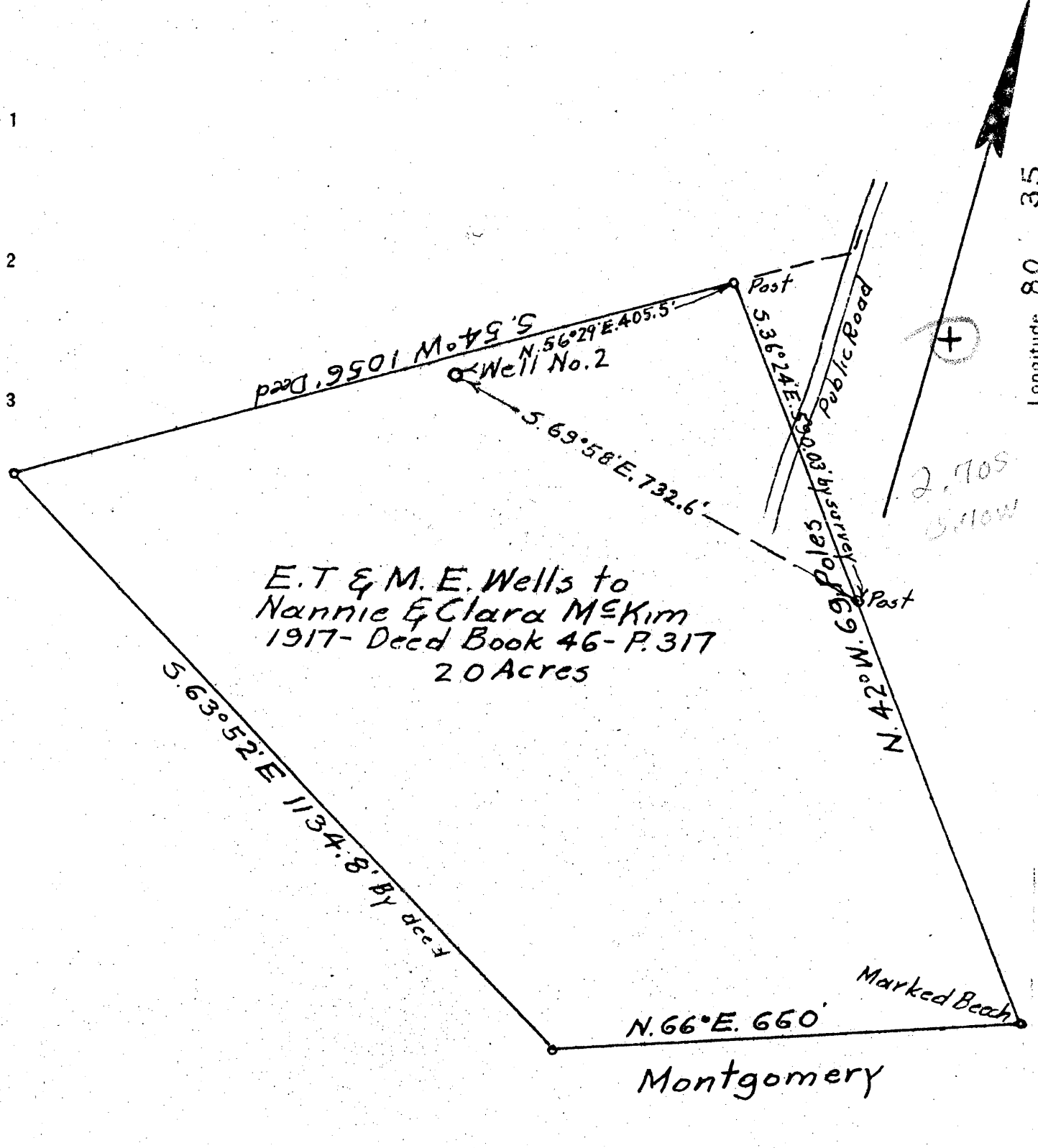
District Cross Creek

**WELL LOCATION PLAT**

County 009 Permit 30052

Latitude 40 25

Longitude 80 35



E.T & M.E. Wells to  
 Nannie & Clara M. Kim  
 1917- Deed Book 46- P. 317  
 20 Acres

New Location .....  
 Drill Deeper .....  
 Abandonment ..... X

10123 1042

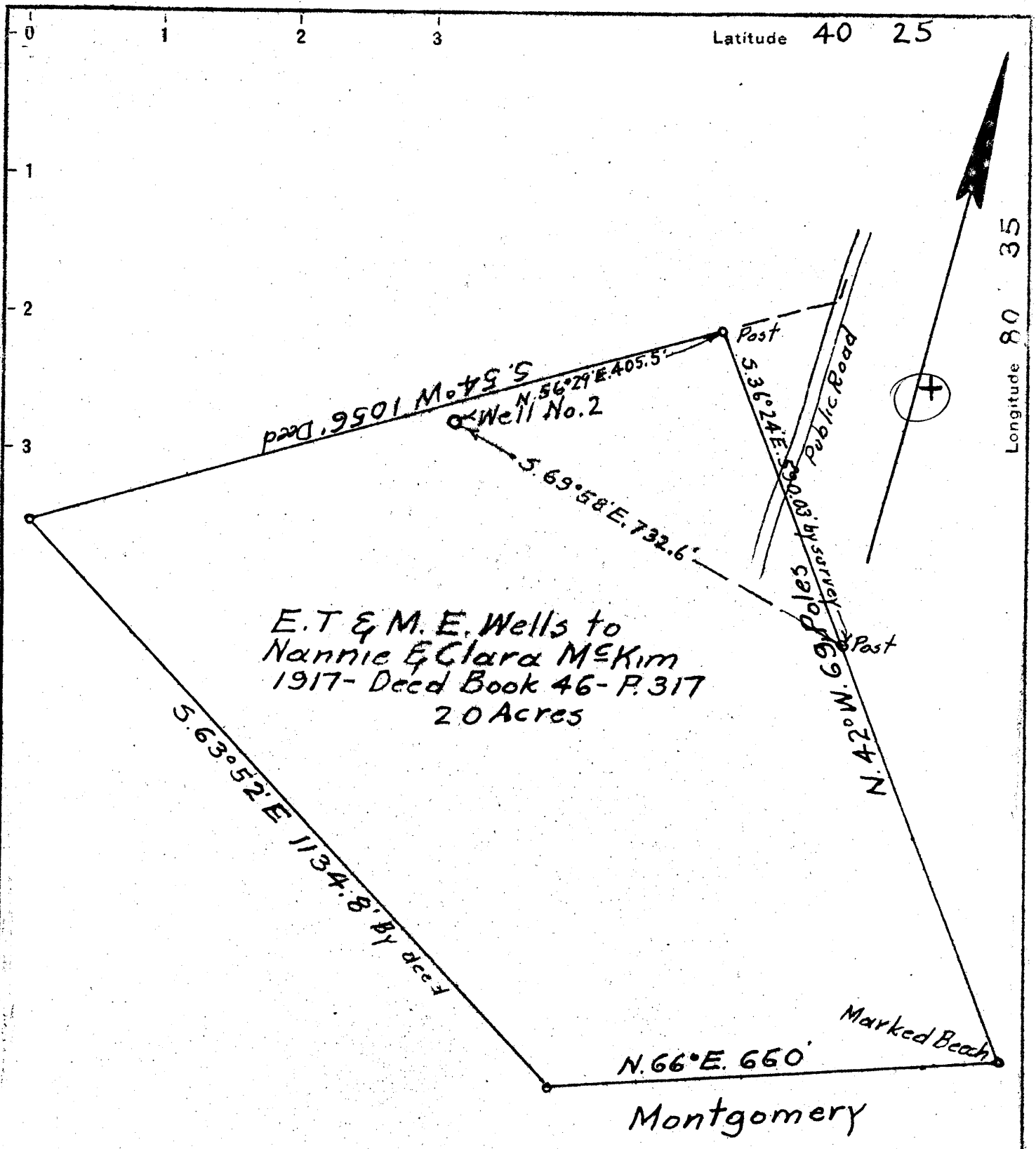
0.71 W  
 2.7 W

Company M. E. Kim Oil Co  
 Address Holidays Cove, W. Va  
 Farm E. T & M. E. Wells  
 Tract \_\_\_\_\_ Acres 20 Lease No. \_\_\_\_\_  
 Well (Farm) No. 2 Serial No. \_\_\_\_\_  
 Elevation (Spirit Level) 1153  
 Quadrangle Steubenville  
 County Brooke District Cross Creek  
 Engineer Walter W. Stegman  
 Engineer's Registration No. 394  
 File No. \_\_\_\_\_ Drawing No. \_\_\_\_\_  
 Date August 15, 1945 Scale 1 Inch = 200 Feet

STATE OF WEST VIRGINIA  
 DEPARTMENT OF MINES  
 OIL AND GAS DIVISION  
 CHARLESTON

WELL LOCATION MAP  
 FILE NO. BR0-52-A

+ Denotes location of well on United States Topographic Maps, scale 1 to 62,500, latitude and longitude lines being represented by border lines as shown.  
 - Denotes one inch spaces on border line of original tracing.



New Location \_\_\_\_\_  
 Drill Deeper \_\_\_\_\_  
 Abandonment

Company M. E. Kim Oil Co  
 Address Hollidays Cove, W. Va  
 Farm E. T & M. E. Wells  
 Tract \_\_\_\_\_ Acres 20 Lease No. \_\_\_\_\_  
 Well (Farm) No. 2 Serial No. \_\_\_\_\_  
 Elevation (Spirit Level) 1153  
 Quadrangle Steubenville  
 County Brooke District Cross Creek  
 Engineer Walter W. Stegman  
 Engineer's Registration No. 394  
 File No. \_\_\_\_\_ Drawing No. \_\_\_\_\_  
 Date August 15, 1945 Scale 1 Inch = 200 Feet

STATE OF WEST VIRGINIA  
 DEPARTMENT OF MINES  
 OIL AND GAS DIVISION  
 CHARLESTON

WELL LOCATION MAP  
 FILE NO. BR0-52-A

+ Denotes location of well on United States Topographic Maps, scale 1 to 62,500, latitude and longitude lines being represented by border lines as shown.

- Denotes one inch spaces on border line of original tracing.



574

STATE OF WEST VIRGINIA  
DEPARTMENT OF MINES  
OIL AND GAS DIVISION

WELL RECORD

Permit No. 574

Oil or Gas Well X (KIND)

Company McKim Oil Company  
 Address c/o A. G. Isininger-Hollidays Cove, W. Va.  
 Farm Nannie & Clara McKim Acres \_\_\_\_\_  
 Location (waters) \_\_\_\_\_  
 Well No. 2 Elev. \_\_\_\_\_  
 District Cross Creek County Brooke  
 The surface of tract is owned in fee by \_\_\_\_\_  
 Address \_\_\_\_\_  
 Mineral rights are owned by Nannie & Clara McKim  
 Address \_\_\_\_\_  
 Drilling commenced about 1925  
 Drilling completed \_\_\_\_\_  
 Date Shot \_\_\_\_\_ From \_\_\_\_\_ To \_\_\_\_\_  
 With \_\_\_\_\_  
 Open Flow \_\_\_\_\_ /10ths Water in \_\_\_\_\_ Inch  
 \_\_\_\_\_ /10ths Merc. in \_\_\_\_\_ Inch  
 Volume \_\_\_\_\_ Cu. Ft.  
 Rock Pressure \_\_\_\_\_ lbs. \_\_\_\_\_ hrs.  
 Oil \_\_\_\_\_ bbls., 1st 24 hrs.  
 Fresh water \_\_\_\_\_ feet \_\_\_\_\_ feet  
 Salt water \_\_\_\_\_ feet \_\_\_\_\_ feet

Casing and Tubing	Used in Drilling	Left in Well	Packers
Size			Kind of Packer
16			
13			
10			Size of
8 1/4			
6 5/8		1175	Depth set
5 3/16			
3			Perf. top
2			Perf. bottom
Liners Used			Perf. top
			Perf. bottom

CASING CEMENTED	SIZE	No. Ft.	Date
COAL WAS ENCOUNTERED AT		FEET	INCHES
	FEET	INCHES	FEET
	FEET	INCHES	FEET

Formation	Color	Hard or Soft	Top	Bottom	Oil, Gas or Water	Depth Found	Remarks
COAL			61				
Berea Grit Sand			<del>1325</del>	<del>1345</del>			<i>No correct, our by our calculations</i>
no other record available							
Reconstructed record; using the record of Well No. 1863 drilled by the Hope Natural Gas Company, Cross Creek District, Latitude 40 deg - 20'; longitude 80 deg-35'.							
Coal			61	66			
Lower Freeport			580	626			
Gas Sand			794	845			
Salt Sand			862	977			
Big Lime			977	1050			
Big Injūn			1050	1280			
Weir Sand			1533	1568			
Berea Grit			1625	1645			

NANNIE & CLARA MCKIM NO. 2 WELL.

Cross Creek District, Brooke County, W. Va.  
 By McKim Oil Co., A. G. Isiminger, Hollidays Cove, W. Va.  
 Abandoned under permit Bro-52-A?  
 On.....acres.  
 Elevation, .....' L.  
 Minerals owned by Nannie & Clara McKim.  
 Drilling commenced about 1925.  
 6 $\frac{5}{8}$ " casing, 1175'.  
 Oil well. Record to Dept. of Mines not dated or stamped.  
 Record to RCT from Mrs. Griffith Aug. 10, 1949. Old File No. 54.

	Top.	Bottom.
Coal	61	..
Berea Grit Sand (100' added)	1625	1645

NO OTHER RECORD AVAILABLE.

Reconstructed record: Using the record of well No. 1863 drilled by the Hope Natural Gas Co., Cross Creek District, Latitude 40° 20' - Longitude 80° 35':

	Top.	Bottom.
Coal	61	68
Lower Freeport Sand	580	626
Gas Sand	794	845
Salt Sand	862	977
Big Lime	977	1050
Big Injun Sand	1050	1280
Weir Sand	1533	1568
Berea Grit	1625	1645