

40°25'00"

Latitude

80°35'00"

Longitude

2.30S
.29W

Top Location

7.5' Loc. _____ 15' Loc. _____
 _____ (calc.) _____

Company I. Simmungen & Reber

Farm Handmans Trs #4

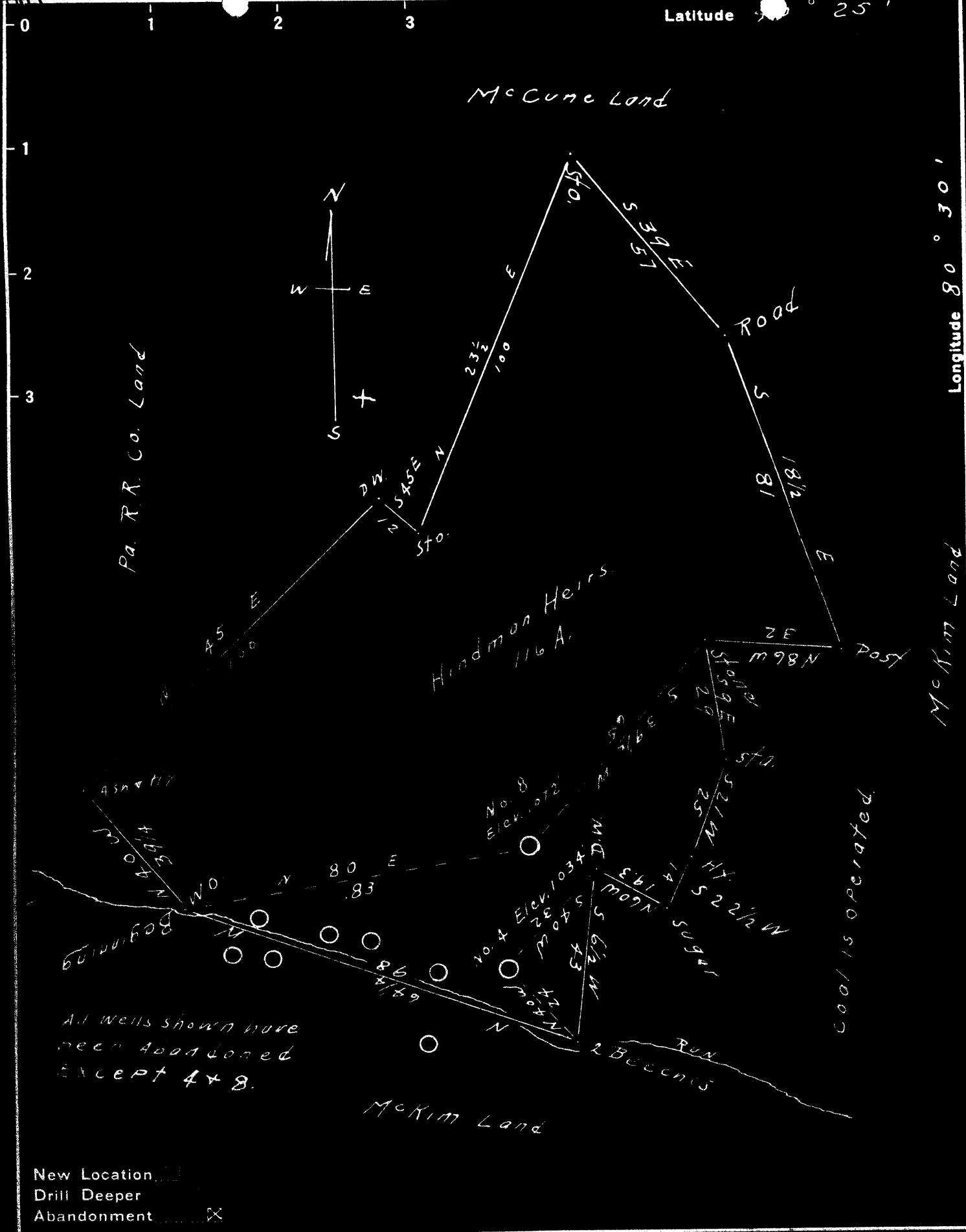
15' Quad _____
(sec.)

7.5' Quad Newton

District Cross Creek

WELL LOCATION PLAT

County 009 Permit 30058



New Location
 Drill Deeper
 Abandonment

Company Isinminger & Reber
 Address Cameron, West Va.
 Farm Hindman Heirs
 Tract One Acres 46 Lease No. _____
 Well (Farm) No. 4x8 Serial No. _____
 Elevation (Spirit Level) 1034, 1072 Feet
 Quadrangle Steubenville
 County Boone District Cross Creek
 Engineer J.M. Cochran
 Engineer's Registration No. 60,500
 File No. _____ Drawing No. _____
 Date 10-2-28 Scale 1 inch = 30 Rods

STATE OF WEST VIRGINIA
 DEPARTMENT OF MINES
 OIL AND GAS DIVISION
 CHARLESTON

WELL LOCATION MAP
 FILE NO. BRO-58-A-#4

+ Denotes location of well on United States Topographic Maps, scale 1 to 62,500, latitude and longitude lines being represented by border lines as shown.

- Denotes one inch spaces on border line of original tracing.